

Converting Colors

HunterLab(53.0000, 15.8728,
23.3228)

Have a look what the booklet for
HunterLab(53.0000, 15.8728,
23.3228) contains.

HunterLab(53.0020, 15.8744, 23.3236)	3
<i>Conversions</i>	4
<i>Details</i>	6
<i>Harmonies</i>	12
<i>Previews</i>	24
<i>Color Blindness Simulation</i>	28
<i>CSS Examples</i>	31

Color

**HunterLab(53.0020, 15.8744,
23.3236)**

Conversions

Conversions Part 1

Format	Color
Hex	C48155
RGB	196, 129, 85
RGB Percent	77%, 51%, 33%
CMY	0.2314, 0.4941, 0.6667
CMYK	0.00, 0.34, 0.57, 0.23
HSL	24°, 48%, 55%
HSV	24°, 57%, 77%
XYZ	32.2549, 28.0921, 12.3166
YIQ	144.0170, 54.0560, 0.5200

Conversions

Conversions Part 2

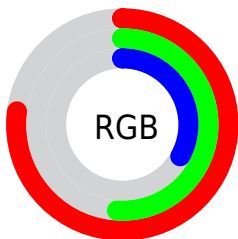
Format	Color
R_{YB}	196, 158, 85
Decimal	12878165
CIE _{Lab}	59.97, 21.29, 34.26
CIE _{LCh}	60, 40.337, 58.145
Yxy	28.0935, 0.4439, 0.3866
Android (android.graphics.Color)	4291068245 (0xFFC48155)
YUV	144.0170, -29.0954, 45.5891
Hunter-Lab	53.0020, 15.8744, 23.3236

Details

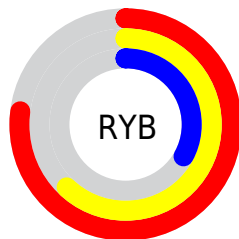
The HunterLab color **53.0020, 15.8744, 23.3236** is a dark color, and the websafe version is hex **CC9966**. The color can be described as middle muted orange. A complement of this color would be **53.2653, -9.6442, -25.4784**, and the grayscale version is **52.9160, -2.8235, 2.8750**.

A 20% lighter version of the original color is **75.1621, 16.6861, 28.2329**, and **33.4976, 14.8802, 17.6559** is the 20% darker color. If you saturate the color by 10%, you get **49.8854, 20.4487, 25.0806**, and if you desaturate by 10%, it is **56.3459, 11.6222, 20.9735**.

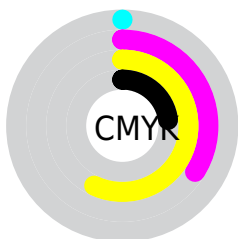
Distribution



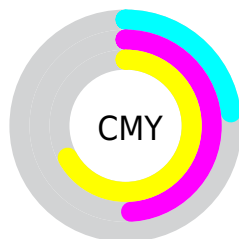
- Red (77%)
- Green (51%)
- Blue (33%)



- Red (77%)
- Yellow (62%)
- Blue (33%)



- Cyan (0%)
- Magenta (34%)
- Yellow (57%)
- Black (23%)



- Cyan (23%)
- Magenta (49%)
- Yellow (67%)

Brightness & Saturation Gradients

These gradients show how the HunterLab color 53.0020, 15.8744, 23.3236 changes by changing the brightness by 10 percent. The first figure shows a shift by +10% for each color and the second figure -10%.

Similar to the brightness gradients but the following saturation gradients show a change of the HunterLab color 53.0020, 15.8744, 23.3236 by changing the saturation by 10% instead.

■ 53.0020, 15.8744,
23.3236

■ 53.0020, 15.8744,
23.3236

171.1472, 17.5595,
44.4394

■ 42.8908, 15.3060,
20.5753

■ 75.2554, 16.7238,
28.4568

■ 33.5183, 14.6305,
17.6571

■ 87.3186, 17.0295,
30.8892

■ 24.9499, 13.8281,
14.5172

■ 99.9653, 17.2648,
33.2552

■ 17.2695, 12.8783,
12.0467

■ 113.1696, 17.4355,
35.5669

■ 10.5950, 11.7619,
7.4165

■ 126.9091, 17.5465,
37.8342

0.0000, INF, NaN

0.0000, NaN, NaN

141.1635, 17.6019,

40.0647

0.0000, NaN, NaN

155.9149, 17.6052,
42.2647

0.0000, NaN, NaN

■ 53.0020, 15.8744,
23.3236

■ 53.0020, 15.8744,
23.3236

■ 49.8854, 20.4487,
25.0806

■ 56.3459, 11.6222,
20.9735

■ 47.0161, 25.3203,
26.1807

■ 59.8907, 7.7089,
18.0957

■ 44.4194, 30.4180,
26.5833

■ 63.6173, 4.1242,
14.7563

■ 42.1160, 35.6227,
26.3084

■ 67.5074, 0.8509,
11.0144

■ 41.4032, 37.3442,
26.1662

■ 71.5451, -2.1331,
6.9220

■ 75.7163, -4.8520,
2.5236

■ 80.0089, -7.3301,
-2.1433

■ 84.4123, -9.5906,
-7.0468

■ 88.6813, -12.9683,
-8.8343

Harmonies

Analogous

The Analogous color harmony consists of three colors that are next to each other on the color wheel.



53.0033, 29.7673, 15.7350



53.0020, 15.8744, 23.3236



53.0033, -1.7510, 25.7528

Triad

The Triadic color harmony groups three colors that are evenly spaced from another and form a triangle on the color wheel.



53.0033, 15.8716, 23.3243



53.0033, -32.1224, 3.8982



53.0033, 13.7721, -33.2411

Complementary

The Complementary color scheme is a pair of colors which are on the opposite of each other on the color wheel.



53.0020, 15.8744, 23.3236



53.2653, -9.6442, -25.4784

Split Complementary

Split-complementary colors differ from the complementary color scheme. The scheme consists of three colors, the original color and two neighbors of the complement color.



53.0033, -3.9023, -39.4307



53.0020, 15.8744, 23.3236



53.0033, -29.0645, -14.2966

Square

The Square scheme is like the rectangle color scheme, but the four colors are evenly spaced on the color wheel.



53.0033, 15.8716, 23.3243



53.0033, -28.2060, 17.0038



53.0033, -19.2533, -31.5997



53.0033, 28.4501, -16.6564

Rectangle

The Rectangle color scheme consists of four colors that form a rectangle on the color wheel.



53.0020, 15.8744, 23.3236



53.0033, -12.7876, 24.9911



53.0033, -19.2533, -31.5997



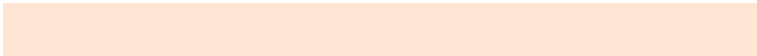
53.0033, 7.9197, -36.8012

Sweetspot

The Sweet Spot groups the original color and five complimentary colors.



53.0033, 15.8716, 23.3243



90.5227, 1.4131, 15.1592



45.3296, 45.8980, -10.9385



41.3791, 1.0569, 7.5046

0.0000, NaN, NaN



46.2646, -2.4686, 2.5136

Same Dimension

The Same Dimension uses a secret algorithm to generate beautiful new colors.



53.0033, 15.8716, 23.3243



66.1705, 29.0857, 34.2018



68.0288, -10.5568, 34.2436



32.7390, -0.6257, 3.7517



33.4252, 29.3180, 21.1097



7.8569, 3.9203, 4.9100

Inverse Universe

The Inverse Universe completely reimagines the original color for something new.



53.2653, -9.6442, -25.4784



66.4999, -11.4000, -43.5731



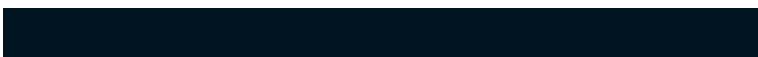
38.2663, 17.3402, -57.0337



32.7667, -2.7424, -0.2768



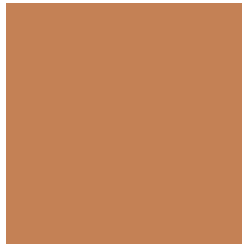
33.3216, -1.1365, -39.1956



7.8182, -1.6516, -6.2067

Previews

White Background



This preview shows how the HunterLab color 53.0020, 15.8744, 23.3236 looks on a white background.

Color Contrast Check

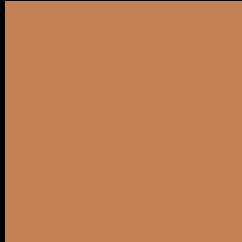
Large Text (above 18pt) WCAG AA ✓ Pass

Any Text WCAG AA × Fail

Large Text (above 18pt) WCAG AAA × Fail

Any Text WCAG AAA × Fail

Black Background



This preview shows how the HunterLab color 53.0020, 15.8744, 23.3236 looks on a black background.

Color Contrast Check

Large Text (above 18pt) WCAG AA ✓ Pass

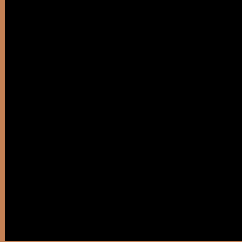
Any Text WCAG AA ✓ Pass

Large Text (above 18pt) WCAG AAA ✓ Pass

Any Text WCAG AAA × Fail

If you want to check with other color combinations, try the [Color Contrast Checker](#).

HunterLab 53.0020, 15.8744, 23.3236 Background



This preview shows how black text looks on a background with the HunterLab color 53.0020, 15.8744, 23.3236.



This preview shows how white text looks on a background with the HunterLab color 53.0020, 15.8744,

Color Blindness Simulation

Color vision deficiency is a very complex topic, and I could not describe the different causes any better than Wikipedia does, so if you want to learn more, you should check out their [article about color blindness](#).

Dichromacy



Original Color

53.0020, 15.8744, 23.3236

Protanopia

53.1745, -5.3929, 21.6356

Deuteranopia

53.0553, 3.9855, 23.6169



Tritanopia

53.0200, 25.2742, 8.7018

Trichromacy



Original Color

53.0020, 15.8744, 23.3236

Protanomaly

52.8745, 2.1608, 22.0209

Deuteranomaly

53.0645, 8.1577, 23.4694

Tritanomaly

52.9596, 21.8547, 14.8576

Monochromacy



Original Color

53.0020, 15.8744, 23.3236

Achromatopsia

52.8104, -2.8178, 2.8693

Achromatomaly

52.6135, 2.6225, 11.3493

CSS Examples

Text

The CSS property to change the color of the text to HunterLab 53.0020, 15.8744, 23.3236 is called "color". The color property can be set on classes, ids or directly on the HTML element.

This example shows how text in the color `rgb(196, 129, 85)` looks like.

```
.text, #text, p{  
    color:rgb(196, 129, 85)  
}
```

If you want to add a text shadow in that color use the text-shadow property, you can generate a text shadow directly with our [CSS Text Shadow Generator](#).

Here you see how black text with a 4 pixel rgb(196, 129, 85) colored shadow looks like.

```
.shadow{ text-shadow: 4px 4px 2px rgb(196, 129, 85) }
```

Border

The CSS property to change the border of an element to HunterLab 53.0020, 15.8744, 23.3236 is called "border". The border property can be set on classes, ids or directly on the HTML element.

This example shows the color as border, it can be applied via the CSS property "border" or "border-color".

```
.border, #border, table{ border:4px solid rgb(196, 129, 85) }
```


If only the border color should be changed use the property border-color.

```
.border{ border-color:rgb(196, 129, 85) }
```

If you want to add a box shadow in that color use:

Here you see how a box with a 4 pixel rgb(196, 129, 85) colored shadow looks like.

```
.boxshadow{ -moz-box-shadow:4px 4px 4px  
4px rgb(196, 129, 85); -webkit-box-  
shadow:4px 4px 4px 4px rgb(196, 129, 85);  
box-shadow:4px 4px 4px 4px rgb(196, 129,  
85) }
```

Background

The CSS property to change the background color of an element to HunterLab 53.0020, 15.8744, 23.3236 is called "background". The background property can be set on classes, ids or directly on the HTML element.

```
.background, #background, body{  
background: rgb(196, 129, 85) }
```

If only the background color should be changed can be used:

```
.background{ background-color: rgb(196,  
129, 85) }
```

This example shows the color as background, it is applied via the CSS property "background".

To optimize and compress your CSS code, you can use our [online CSS compressor and optimizer](#) based on csstidy. If you want to create a linear or radial gradient as background or border, check our [CSS Gradient Generator](#).

Hey! You found this booklet interesting? Support Converting Colors with the new Membership Option!

The pro membership hides all ads, plus gives you double the colors in the color bucket, and more awesome pro features!

[Learn more, Memberships starting at \\$2.50/m!](#)

**Follow me
on Twitter!**

@ConvertingColor