

Converting Colors

HunterLab(53.0065, 60.5676,
11.6442)

Have a look what the booklet for
HunterLab(53.0065, 60.5676,
11.6442) contains.

HunterLab(53.0065, 60.5676, 11.6442)	3
<i>Conversions</i>	4
<i>Details</i>	6
<i>Harmonies</i>	12
<i>Previews</i>	24
<i>Color Blindness Simulation</i>	28
<i>CSS Examples</i>	31

Color

**HunterLab(53.0065, 60.5676,
11.6442)**

Conversions

Conversions Part 1

Format	Color
Hex	F7577E
RGB	247, 87, 126
RGB Percent	97%, 34%, 49%
CMY	0.0314, 0.6588, 0.5059
CMYK	0.00, 0.65, 0.49, 0.03
HSL	345°, 91%, 65%
HSV	345°, 65%, 97%
XYZ	45.5318, 28.0969, 22.7621
YIQ	139.2860, 82.8410, 46.0490

Conversions

Conversions Part 2

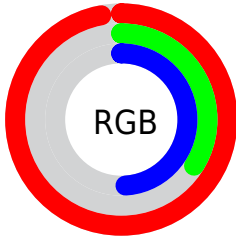
Format	Color
R_{YB}	247, 87, 126
Decimal	16209790
CIE _{Lab}	59.98, 63.74, 12.30
CIE _{LCh}	60, 64.915, 10.919
Yxy	28.0984, 0.4724, 0.2915
Android (android.graphics.Color)	4294399870 (0xFFFF7577E)
YUV	139.2860, -6.5500, 94.4652
Hunter-Lab	53.0065, 60.5676, 11.6442

Details

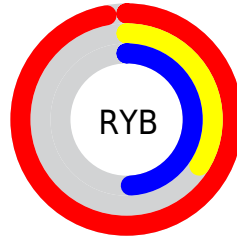
The HunterLab color **53.0065, 60.5676, 11.6442** is a light color, and the websafe version is hex **FF6699**. The color can be described as light muted rose. A complement of this color would be **85.5000, -48.2071, 10.4555**, and the grayscale version is **50.9296, -2.7175, 2.7671**.

A 20% lighter version of the original color is **66.6490, 42.0459, 4.3360**, and **33.4973, 56.1215, 9.1959** is the 20% darker color. If you saturate the color by 10%, you get **49.3168, 68.4923, 14.7586**, and if you desaturate by 10%, it is **57.7347, 51.0960, 9.0930**.

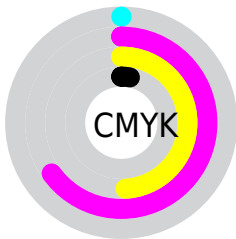
Distribution



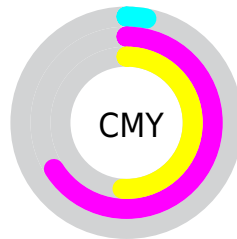
- Red (97%)
- Green (34%)
- Blue (49%)



- Red (97%)
- Yellow (34%)
- Blue (49%)



- Cyan (0%)
- Magenta (65%)
- Yellow (49%)
- Black (3%)



- Cyan (3%)
- Magenta (66%)
- Yellow (51%)

Brightness & Saturation Gradients

These gradients show how the HunterLab color 53.0065, 60.5676, 11.6442 changes by changing the brightness by 10 percent. The first figure shows a shift by +10% for each color and the second figure -10%.

Similar to the brightness gradients but the following saturation gradients show a change of the HunterLab color 53.0065, 60.5676, 11.6442 by changing the saturation by 10% instead.

53.0065, 60.5676,
11.6442

53.0065, 60.5676,
11.6442

171.1540, 75.5914,
22.9558

42.8951, 58.4293,
10.3790

75.2606, 64.5597,
14.1423

33.5223, 56.2378,
9.0870

87.3241, 66.4097,
15.3854

24.9535, 54.0628,
7.7518

99.9710, 68.1619,
16.6302

17.2727, 52.0992,
6.3436

113.1756, 69.8196,
17.8795

10.5977, 50.9340,
5.4991

126.9153, 71.3872,
19.1354

0.0000, INF, NaN

0.0000, INF, NaN

141.1699, 72.8688,

20.3993

0.0000, NaN, NaN

155.9216, 74.2689,
21.6725

0.0000, NaN, NaN

■ 53.0065, 60.5676,
11.6442

■ 53.0065, 60.5676,
11.6442

■ 49.3168, 68.4923,
14.7586

■ 57.7347, 51.0960,
9.0930

■ 46.7448, 74.0968,
18.2138

■ 63.3683, 40.8302,
7.1827

■ 45.2784, 76.8953,
21.6679

■ 69.7720, 30.2976,
5.8971

■ 44.8357, 77.5148,
23.2955

■ 76.8217, 19.8150,
5.1685

■ 84.4127, 9.5403,
4.9142

92.4601, -0.4666,
5.0544

99.2543, -7.9396,
4.5066

Harmonies

Analogous

The Analogous color harmony consists of three colors that are next to each other on the color wheel.



53.0080, 57.7686, -16.5853



53.0065, 60.5676, 11.6442



53.0080, 43.9349, 26.5615

Triad

The Triadic color harmony groups three colors that are evenly spaced from another and form a triangle on the color wheel.



53.0080, 60.5632, 11.6454



53.0080, -33.5085, 28.7292



53.0080, -19.2056, -71.2237

Complementary

The Complementary color scheme is a pair of colors which are on the opposite of each other on the color wheel.



53.0065, 60.5676, 11.6442



85.5000, -48.2071, 10.4555

Split Complementary

Split-complementary colors differ from the complementary color scheme. The scheme consists of three colors, the original color and two neighbors of the complement color.



53.0080, -37.4916, -42.4216



53.0065, 60.5676, 11.6442



53.0080, -44.4955, 16.9676

Square

The Square scheme is like the rectangle color scheme, but the four colors are evenly spaced on the color wheel.



53.0080, 60.5632, 11.6454



53.0080, -12.5855, 32.4742



53.0080, -45.7851, -7.6837



53.0080, 7.6837, -75.3149

Rectangle

The Rectangle color scheme consists of four colors that form a rectangle on the color wheel.



53.0065, 60.5676, 11.6442



53.0080, 25.7471, 30.8703



53.0080, -45.7851, -7.6837



53.0080, -26.4009, -63.6084

Sweetspot

The Sweet Spot groups the original color and five complimentary colors.



53.0080, 60.5632, 11.6454



84.1122, 14.3975, 5.1532



51.7678, 67.7776, -67.6960



37.8751, 8.0758, 2.4228

0.0000, NaN, NaN



46.2646, -2.4686, 2.5136

Same Dimension

The Same Dimension uses a secret algorithm to generate beautiful new colors.



53.0080, 60.5632, 11.6454



50.1091, 73.2753, 16.4822



59.7018, 38.0446, 28.4972



40.6801, 1.9327, 2.2695



32.6346, 56.4770, 16.5202



9.7553, 17.0395, 3.7205

Inverse Universe

The Inverse Universe completely reimagines the original color for something new.



53.0080, 60.5632, 11.6454



50.1091, 73.2753, 16.4822



73.0539, -22.6971, -26.7982



40.6801, 1.9327, 2.2695



32.6346, 56.4770, 16.5202



9.7553, 17.0395, 3.7205

Previews

White Background



This preview shows how the HunterLab color 53.0065, 60.5676, 11.6442 looks on a white background.

Color Contrast Check

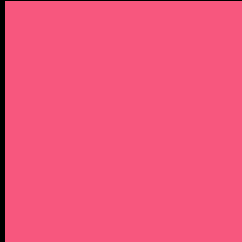
Large Text (above 18pt) WCAG AA ✓ Pass

Any Text WCAG AA × Fail

Large Text (above 18pt) WCAG AAA × Fail

Any Text WCAG AAA × Fail

Black Background



This preview shows how the HunterLab color 53.0065, 60.5676, 11.6442 looks on a black background.

Color Contrast Check

Large Text (above 18pt) WCAG AA ✓ Pass

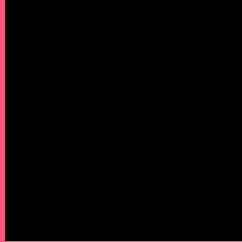
Any Text WCAG AA ✓ Pass

Large Text (above 18pt) WCAG AAA ✓ Pass

Any Text WCAG AAA × Fail

If you want to check with other color combinations, try the [Color Contrast Checker](#).

HunterLab 53.0065, 60.5676, 11.6442 Background



This preview shows how black text looks on a background with the HunterLab color 53.0065, 60.5676, 11.6442.



This preview shows how white text looks on a background with the HunterLab color 53.0065, 60.5676,

Color Blindness Simulation

Color vision deficiency is a very complex topic, and I could not describe the different causes any better than Wikipedia does, so if you want to learn more, you should check out their [article about color blindness](#).

Dichromacy



Original Color

53.0065, 60.5676, 11.6442

Protanopia

53.2073, -0.6521, -2.7703

Deuteranopia

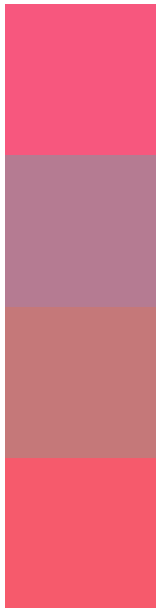
53.0076, 3.7175, 13.5572



Tritanopia

52.8664, 54.9931, 20.5795

Trichromacy



Original Color

53.0065, 60.5676, 11.6442

Protanomaly

51.0539, 20.1856, 0.2314

Deuteranomaly

51.6563, 24.3031, 11.4935

Tritanomaly

52.9036, 57.1225, 17.6989

Monochromacy



Original Color

53.0065, 60.5676, 11.6442

Achromatopsia

50.8117, -2.7112, 2.7607

Achromatomaly

49.6177, 18.8625, 3.9535

CSS Examples

Text

The CSS property to change the color of the text to HunterLab 53.0065, 60.5676, 11.6442 is called "color". The color property can be set on classes, ids or directly on the HTML element.

This example shows how text in the color `rgb(247, 87, 126)` looks like.

```
.text, #text, p{  
    color:rgb(247, 87, 126)  
}
```

If you want to add a text shadow in that color use the text-shadow property, you can generate a text shadow directly with our [CSS Text Shadow Generator](#).

Here you see how black text with a 4 pixel rgb(247, 87, 126) colored shadow looks like.

```
.shadow{ text-shadow: 4px 4px 2px rgb(247, 87, 126) }
```

Border

The CSS property to change the border of an element to HunterLab 53.0065, 60.5676, 11.6442 is called "border". The border property can be set on classes, ids or directly on the HTML element.

This example shows the color as border, it can be applied via the CSS property "border" or "border-color".

```
.border, #border, table{ border:4px solid rgb(247, 87, 126) }
```


If only the border color should be changed use the property border-color.

```
.border{ border-color:rgb(247, 87, 126) }
```

If you want to add a box shadow in that color use:

Here you see how a box with a 4 pixel rgb(247, 87, 126) colored shadow looks like.

```
.boxshadow{ -moz-box-shadow:4px 4px 4px  
4px rgb(247, 87, 126); -webkit-box-  
shadow:4px 4px 4px 4px rgb(247, 87, 126);  
box-shadow:4px 4px 4px 4px rgb(247, 87,  
126) }
```

Background

The CSS property to change the background color of an element to HunterLab 53.0065, 60.5676, 11.6442 is called "background". The background property can be set on classes, ids or directly on the HTML element.

```
.background, #background, body{  
background: rgb(247, 87, 126) }
```

If only the background color should be changed can be used:

```
.background{ background-color: rgb(247, 87,  
126) }
```

This example shows the color as background, it is applied via the CSS property "background".

To optimize and compress your CSS code, you can use our [online CSS compressor and optimizer](#) based on csstidy. If you want to create a linear or radial gradient as background or border, check our [CSS Gradient Generator](#).

Hey! You found this booklet interesting? Support Converting Colors with the new Membership Option!

The pro membership hides all ads, plus gives you double the colors in the color bucket, and more awesome pro features!

[Learn more, Memberships starting at \\$2.50/m!](#)

**Follow me
on Twitter!**

@ConvertingColor