

Converting Colors

HunterLab(53.0110, 40.5737,
3.4144)

Have a look what the booklet for
HunterLab(53.0110, 40.5737,
3.4144) contains.

HunterLab(53.0110, 40.5737, 3.4144)	3
<i>Conversions</i>	4
<i>Details</i>	6
<i>Harmonies</i>	12
<i>Previews</i>	24
<i>Color Blindness Simulation</i>	28
<i>CSS Examples</i>	31

Color

**HunterLab(53.0110, 40.5737,
3.4144)**

Conversions

Conversions Part 1

Format	Color
Hex	DA6E91
RGB	218, 110, 145
RGB Percent	85%, 43%, 57%
CMY	0.1451, 0.5686, 0.4314
CMYK	0.00, 0.50, 0.33, 0.15
HSL	341°, 59%, 64%
HSV	341°, 50%, 85%
XYZ	39.6002, 28.1017, 30.1251
YIQ	146.2820, 53.1330, 33.7810

Conversions

Conversions Part 2

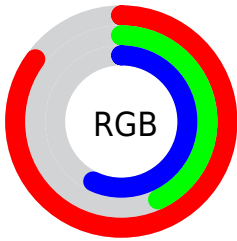
Format	Color
R _Y B	218, 110, 145
Decimal	14315153
CIE Lab	59.98, 45.94, 0.68
CIE LCh	60, 45.942, 0.848
Yxy	28.1031, 0.4048, 0.2873
Android (android.graphics.Color)	4292505233 (0xFFDA6E91)
YUV	146.2820, -0.6320, 62.8967
Hunter-Lab	53.0110, 40.5737, 3.4144

Details

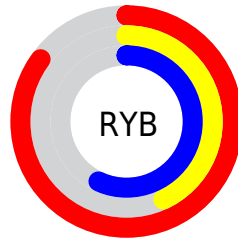
The HunterLab color **53.0110, 40.5737, 3.4144** is a light color, and the websafe version is hex **CC6699**. A complement of this color would be **75.4171, -37.1870, 10.5983**, and the grayscale version is **53.7156, -2.8661, 2.9185**.

A 20% lighter version of the original color is **72.0656, 34.4492, 0.5555**, and **33.5053, 37.3989, 2.1423** is the 20% darker color. If you saturate the color by 10%, you get **48.5156, 49.2689, 4.8344**, and if you desaturate by 10%, it is **58.2103, 31.4027, 2.6670**.

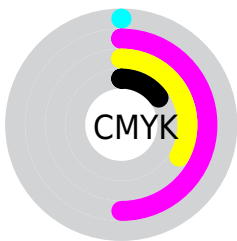
Distribution



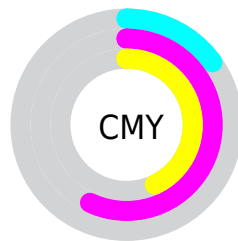
- Red (85%)
- Green (43%)
- Blue (57%)



- Red (85%)
- Yellow (43%)
- Blue (57%)



- Cyan (0%)
- Magenta (50%)
- Yellow (33%)
- Black (15%)



- Cyan (15%)
- Magenta (57%)
- Yellow (43%)

Brightness & Saturation Gradients

These gradients show how the HunterLab color 53.0110, 40.5737, 3.4144 changes by changing the brightness by 10 percent. The first figure shows a shift by +10% for each color and the second figure -10%.

Similar to the brightness gradients but the following saturation gradients show a change of the HunterLab color 53.0110, 40.5737, 3.4144 by changing the saturation by 10% instead.

53.0110, 40.5737,
3.4144

53.0110, 40.5737,
3.4144

171.1605, 50.4625,
10.1023

42.8992, 38.9791,
2.8286

75.2655, 43.4136,
4.6932

33.5261, 37.2711,
2.2790

87.3292, 44.6777,
5.3804

24.9569, 35.4589,
1.7694

99.9764, 45.8462,
6.0980

17.2757, 33.5963,
1.3030

113.1812, 46.9256,
6.8446

10.6002, 31.8834,
0.8838

126.9211, 47.9218,
7.6193

0.0000, INF, NaN

141.1760, 48.8403,

0.0000, INF, NaN

8.4210

0.0000, NaN, NaN

155.9278, 49.6857,
9.2490

0.0000, NaN, NaN

■ 53.0110, 40.5737,
3.4144

■ 53.0110, 40.5737,
3.4144

■ 48.5156, 49.2689,
4.8344

■ 58.2103, 31.4027,
2.6670

■ 44.8325, 56.9556,
6.9610

■ 64.0011, 22.1228,
2.5036

■ 42.0569, 62.9622,
9.7357

■ 70.2902, 12.9319,
2.8289

■ 40.2286, 66.6992,
12.9629

■ 76.9992, 3.9243,
3.5541

■ 39.2255, 68.2019,
16.2721

■ 84.0652, -4.8689,
4.6040

■ 39.1865, 68.2572,
16.4132

■ 91.4378, -13.4505,
5.9184

■ 96.5465, -18.0154,
4.5629

■ 96.7706, -16.7593,
1.3713

Harmonies

Analogous

The Analogous color harmony consists of three colors that are next to each other on the color wheel.



53.0123, 34.4387, -17.8207



53.0110, 40.5737, 3.4144



53.0123, 33.7344, 18.2268

Triad

The Triadic color harmony groups three colors that are evenly spaced from another and form a triangle on the color wheel.



53.0123, 40.5706, 3.4156



53.0123, -20.8767, 25.4245



53.0123, -20.0380, -39.1727

Complementary

The Complementary color scheme is a pair of colors which are on the opposite of each other on the color wheel.



53.0110, 40.5737, 3.4144



75.4171, -37.1870, 10.5983

Split Complementary

Split-complementary colors differ from the complementary color scheme. The scheme consists of three colors, the original color and two neighbors of the complement color.



53.0123, -31.5703, -19.0954



53.0110, 40.5737, 3.4144



53.0123, -32.0025, 17.5993

Square

The Square scheme is like the rectangle color scheme, but the four colors are evenly spaced on the color wheel.



53.0123, 40.5706, 3.4156



53.0123, -3.3903, 27.7385



53.0123, -35.6169, 2.3501



53.0123, -2.2702, -47.2155

Rectangle

The Rectangle color scheme consists of four colors that form a rectangle on the color wheel.



53.0110, 40.5737, 3.4144



53.0123, 23.2453, 23.9019



53.0123, -35.6169, 2.3501



53.0123, -24.6750, -33.3171

Sweetspot

The Sweet Spot groups the original color and five complimentary colors.



53.0123, 40.5706, 3.4156



87.4198, 10.6746, 3.7070



51.1474, 41.4457, -44.6470



39.6633, 6.0012, 1.6366

0.0000, NaN, NaN



46.2646, -2.4686, 2.5136

Same Dimension

The Same Dimension uses a secret algorithm to generate beautiful new colors.



53.0123, 40.5706, 3.4156



57.9496, 58.8251, 5.7702



56.0992, 27.3454, 19.4539



36.2226, 1.8018, 1.6747



30.3600, 52.9389, 12.2806



7.8272, 13.8404, 1.6778

Inverse Universe

The Inverse Universe completely reimagines the original color for something new.



53.0123, 40.5706, 3.4156



57.9496, 58.8251, 5.7702



70.4887, -22.7189, -12.7548



36.2226, 1.8018, 1.6747



30.3600, 52.9389, 12.2806



7.8272, 13.8404, 1.6778

Previews

White Background



This preview shows how the HunterLab color 53.0110, 40.5737, 3.4144 looks on a white background.

Color Contrast Check

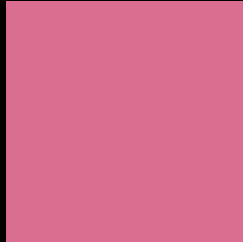
Large Text (above 18pt) WCAG AA ✓ Pass

Any Text WCAG AA × Fail

Large Text (above 18pt) WCAG AAA × Fail

Any Text WCAG AAA × Fail

Black Background



This preview shows how the HunterLab color 53.0110, 40.5737, 3.4144 looks on a black background.

Color Contrast Check

Large Text (above 18pt) WCAG AA ✓ Pass

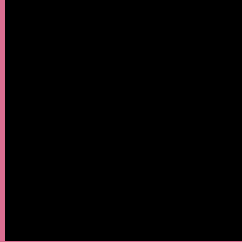
Any Text WCAG AA ✓ Pass

Large Text (above 18pt) WCAG AAA ✓ Pass

Any Text WCAG AAA × Fail

If you want to check with other color combinations, try the [Color Contrast Checker](#).

HunterLab 53.0110, 40.5737, 3.4144 Background



This preview shows how black text looks on a background with the HunterLab color 53.0110, 40.5737, 3.4144.



This preview shows how white text looks on a background with the HunterLab color 53.0110, 40.5737,

3.4144.

Color Blindness Simulation

Color vision deficiency is a very complex topic, and I could not describe the different causes any better than Wikipedia does, so if you want to learn more, you should check out their [article about color blindness](#).

Dichromacy



Original Color

53.0110, 40.5737, 3.4144

Protanopia

53.2220, -0.0709, -6.8619

Deuteranopia

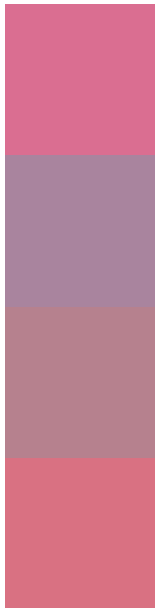
53.1288, 3.8181, 5.1164



Tritanopia

52.9516, 34.9241, 12.6236

Trichromacy



Original Color

53.0110, 40.5737, 3.4144

Protanomaly

52.3509, 13.3531, -4.1433

Deuteranomaly

52.5344, 16.8757, 3.7848

Tritanomaly

53.0789, 36.7514, 9.7600

Monochromacy



Original Color

53.0110, 40.5737, 3.4144

Achromatopsia

53.6135, -2.8607, 2.9129

Achromatomaly

52.5557, 11.9201, 1.9146

CSS Examples

Text

The CSS property to change the color of the text to HunterLab 53.0110, 40.5737, 3.4144 is called "color". The color property can be set on classes, ids or directly on the HTML element.

This example shows how text in the color `rgb(218, 110, 145)` looks like.

```
.text, #text, p{  
    color:rgb(218, 110, 145)  
}
```

If you want to add a text shadow in that color use the text-shadow property, you can generate a text shadow directly with our [CSS Text Shadow Generator](#).

Here you see how black text with a 4 pixel rgb(218, 110, 145) colored shadow looks like.

```
.shadow{ text-shadow: 4px 4px 2px rgb(218, 110, 145) }
```

Border

The CSS property to change the border of an element to HunterLab 53.0110, 40.5737, 3.4144 is called "border". The border property can be set on classes, ids or directly on the HTML element.

This example shows the color as border, it can be applied via the CSS property "border" or "border-color".

```
.border, #border, table{ border:4px solid rgb(218, 110, 145) }
```


If only the border color should be changed use the property `border-color`.

```
.border{ border-color:rgb(218, 110, 145) }
```

If you want to add a box shadow in that color use:

Here you see how a box with a 4 pixel `rgb(218, 110, 145)` colored shadow looks like.

```
.boxshadow{ -moz-box-shadow:4px 4px 4px  
4px rgb(218, 110, 145); -webkit-box-  
shadow:4px 4px 4px 4px rgb(218, 110, 145);  
box-shadow:4px 4px 4px 4px rgb(218, 110,  
145) }
```

Background

The CSS property to change the background color of an element to HunterLab 53.0110, 40.5737, 3.4144 is called "background". The background property can be set on classes, ids or directly on the HTML element.

```
.background, #background, body{  
background: rgb(218, 110, 145) }
```

If only the background color should be changed can be used:

```
.background{ background-color: rgb(218,  
110, 145) }
```

This example shows the color as background, it is applied via the CSS property "background".

To optimize and compress your CSS code, you can use our [online CSS compressor and optimizer](#) based on csstidy. If you want to create a linear or radial gradient as background or border, check our [CSS Gradient Generator](#).

Hey! You found this booklet interesting? Support Converting Colors with the new Membership Option!

The pro membership hides all ads, plus gives you double the colors in the color bucket, and more awesome pro features!

[Learn more, Memberships starting at \\$2.50/m!](#)

**Follow me
on Twitter!**

@ConvertingColor