

Converting Colors

HunterLab(53.0227, 15.7741,
9.3579)

Have a look what the booklet for
HunterLab(53.0227, 15.7741,
9.3579) contains.

HunterLab(53.1821, 15.6624, 9.5002)	3
<i>Conversions</i>	4
<i>Details</i>	6
<i>Harmonies</i>	12
<i>Previews</i>	24
<i>Color Blindness Simulation</i>	28
<i>CSS Examples</i>	31

Color

**HunterLab(53.1821, 15.6624,
9.5002)**

Conversions

Conversions Part 1

Format	Color
Hex	BA8382
RGB	186, 131, 130
RGB Percent	73%, 51%, 51%
CMY	0.2706, 0.4863, 0.4902
CMYK	0.00, 0.30, 0.30, 0.27
HSL	1°, 29%, 62%
HSV	1°, 30%, 73%
XYZ	32.3952, 28.2834, 24.8709
YIQ	147.3310, 33.1010, 11.3490

Conversions

Conversions Part 2

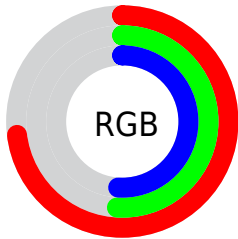
Format	Color
RYB	186, 131, 130
Decimal	12223362
CIELab	60.15, 21.05, 9.03
CIELCh	60, 22.906, 23.208
Yxy	28.2847, 0.3787, 0.3306
Android (android.graphics.Color)	4290413442 (0xFFBA8382)
YUV	147.3310, -8.5442, 33.9127
Hunter-Lab	53.1821, 15.6624, 9.5002

Details

The HunterLab color **53.1821, 15.6624, 9.5002** is a light color, and the websafe version is hex **CC9999**. A complement of this color would be **65.5648, -18.3153, -1.9284**, and the grayscale version is **54.1740, -2.8906, 2.9434**.

A 20% lighter version of the original color is **75.3356, 16.6051, 11.4542**, and **33.6218, 14.3617, 7.2414** is the 20% darker color. If you saturate the color by 10%, you get **48.3193, 22.6353, 11.5746**, and if you desaturate by 10%, it is **58.4612, 8.9344, 7.5122**.

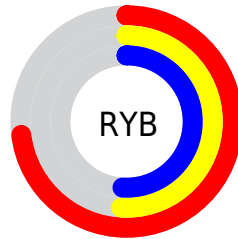
Distribution



Red (73%)

Green (51%)

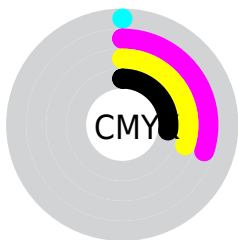
Blue (51%)



Red (73%)

Yellow (51%)

Blue (51%)

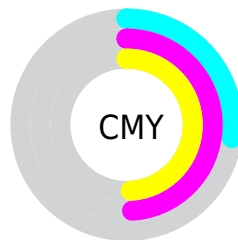


Cyan (0%)

Magenta (30%)

Yellow (30%)

Black (27%)



Cyan (27%)

Magenta (49%)

Yellow (49%)

Brightness & Saturation Gradients

These gradients show how the HunterLab color 53.1821, 15.6624, 9.5002 changes by changing the brightness by 10 percent. The first figure shows a shift by +10% for each color and the second figure -10%.

Similar to the brightness gradients but the following saturation gradients show a change of the HunterLab color 53.1821, 15.6624, 9.5002 by changing the saturation by 10% instead.

■ 53.1821, 15.6624,
9.5002

■ 53.1821, 15.6624,
9.5002

171.4132, 17.2539,
19.4654

■ 43.0585, 15.1075,
8.4357

■ 75.4577, 16.4883,
11.6398

■ 33.6729, 14.4457,
7.3647

■ 87.5312, 16.7829,
12.7204

■ 25.0900, 13.6578,
6.2770

■ 100.1877, 17.0075,
13.8116

■ 17.3935, 12.7231,
5.1534

113.4014, 17.1678,
14.9149

■ 10.7003, 11.6218,
4.2111

127.1499, 17.2689,
16.0313

■ 1.2673, 72.3193,
0.8871

141.4130, 17.3146,

0.0000, NaN, NaN

17.1615

0.0000, NaN, NaN

156.1728, 17.3086,
18.3060

0.0000, NaN, NaN

■ 53.1821, 15.6624,
9.5002

■ 53.1821, 15.6624,
9.5002

■ 48.3193, 22.6353,
11.5746

■ 58.4612, 8.9344,
7.5122

■ 43.9493, 29.7495,
13.6938

■ 64.0871, 2.4919,
5.6209

■ 40.1664, 36.7701,
15.7785

■ 70.0081, -3.6743,
3.8259

■ 37.0684, 43.3029,
17.6967

■ 76.1824, -9.5897,
2.1192

■ 34.7394, 48.8127,
19.2735

■ 82.5766, -15.2865,
0.4902

■ 33.2196, 52.7597,
20.3411

■ 89.1642, -20.7971,
-1.0718

■ 32.4214, 54.9490,
20.9399

■ 94.4347, -25.2734,
-1.6509

Harmonies

Analogous

The Analogous color harmony consists of three colors that are next to each other on the color wheel.



53.1834, 17.2488, 0.7254



53.1821, 15.6624, 9.5002



53.1834, 8.9535, 15.3694

Triad

The Triadic color harmony groups three colors that are evenly spaced from another and form a triangle on the color wheel.



53.1834, 15.6602, 9.5011



53.1834, -17.1397, 12.5726



53.1834, -5.0565, -18.2206

Complementary

The Complementary color scheme is a pair of colors which are on the opposite of each other on the color wheel.



53.1821, 15.6624, 9.5002



65.5648, -18.3153, -1.9284

Split Complementary

Split-complementary colors differ from the complementary color scheme. The scheme consists of three colors, the original color and two neighbors of the complement color.



53.1834, -13.6888, -13.6013



53.1821, 15.6624, 9.5002



53.1834, -20.3299, 4.9768

Square

The Square scheme is like the rectangle color scheme, but the four colors are evenly spaced on the color wheel.



53.1834, 15.6602, 9.5011



53.1834, -10.0824, 16.9049



53.1834, -19.1138, -4.6851



53.1834, 4.8108, -16.4125

Rectangle

The Rectangle color scheme consists of four colors that form a rectangle on the color wheel.



53.1821, 15.6624, 9.5002



53.1834, 2.7281, 17.3861



53.1834, -19.1138, -4.6851



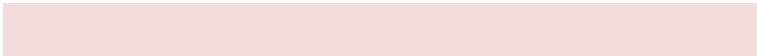
53.1834, -8.1891, -17.3441

Sweetspot

The Sweet Spot groups the original color and five complimentary colors.



53.1834, 15.6602, 9.5011



87.0288, 2.5437, 7.3305



54.6902, 25.0426, -15.6611



40.3048, 1.7761, 3.6102



97.7295, -5.2146, 5.3098



44.2712, -2.3622, 2.4053

Same Dimension

The Same Dimension uses a secret algorithm to generate beautiful new colors.



53.1834, 15.6602, 9.5011



67.2825, 27.1450, 14.5922



60.6831, 1.6575, 16.7871



30.0621, 0.9327, 2.5516



26.6151, 44.9947, 17.1878



5.0843, 8.1552, 3.2757

Inverse Universe

The Inverse Universe completely reimagines the original color for something new.



65.5648, -18.3153, -1.9284



87.2489, -27.9846, -3.9466



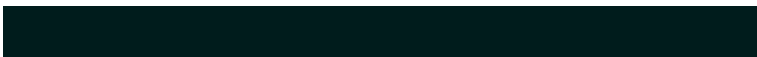
56.9454, -5.1864, -13.3684



31.9096, -4.0841, 0.8629



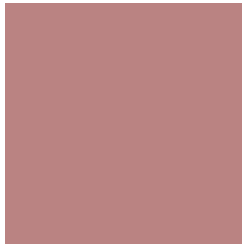
50.0896, -25.9528, -6.5830



9.4513, -4.9286, -1.1739

Previews

White Background



This preview shows how the HunterLab color 53.1821, 15.6624, 9.5002 looks on a white background.

Color Contrast Check

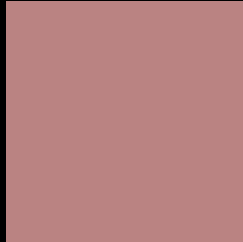
Large Text (above 18pt) WCAG AA ✓ Pass

Any Text WCAG AA × Fail

Large Text (above 18pt) WCAG AAA × Fail

Any Text WCAG AAA × Fail

Black Background



This preview shows how the HunterLab color 53.1821, 15.6624, 9.5002 looks on a black background.

Color Contrast Check

Large Text (above 18pt) WCAG AA ✓ Pass

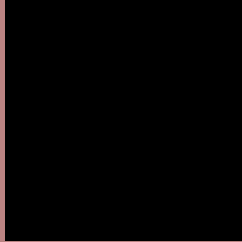
Any Text WCAG AA ✓ Pass

Large Text (above 18pt) WCAG AAA ✓ Pass

Any Text WCAG AAA × Fail

If you want to check with other color combinations, try the [Color Contrast Checker](#).

HunterLab 53.1821, 15.6624, 9.5002 Background



This preview shows how black text looks on a background with the HunterLab color 53.1821, 15.6624, 9.5002.



This preview shows how white text looks on a background with the HunterLab color 53.1821, 15.6624,

9.5002.

Color Blindness Simulation

Color vision deficiency is a very complex topic, and I could not describe the different causes any better than Wikipedia does, so if you want to learn more, you should check out their [article about color blindness](#).

Dichromacy



Original Color

53.1821, 15.6624, 9.5002

Protanopia

53.4238, -2.5490, 6.6092

Deuteranopia

53.2109, 3.4639, 10.0938



Tritanopia

53.2862, 17.7507, 5.9672

Trichromacy



Original Color

53.1821, 15.6624, 9.5002

Protanomaly

53.1638, 3.6117, 7.6693

Deuteranomaly

53.2546, 7.8340, 9.8298

Tritanomaly

53.2049, 17.3367, 7.1316

Monochromacy



Original Color

53.1821, 15.6624, 9.5002

Achromatopsia

54.0158, -2.8821, 2.9348

Achromatomaly

53.4321, 3.4758, 5.0235

CSS Examples

Text

The CSS property to change the color of the text to HunterLab 53.1821, 15.6624, 9.5002 is called "color". The color property can be set on classes, ids or directly on the HTML element.

This example shows how text in the color `rgb(186, 131, 130)` looks like.

```
.text, #text, p{  
    color:rgb(186, 131, 130)  
}
```

If you want to add a text shadow in that color use the text-shadow property, you can generate a text shadow directly with our [CSS Text Shadow Generator](#).

Here you see how black text with a 4 pixel rgb(186, 131, 130) colored shadow looks like.

```
.shadow{ text-shadow: 4px 4px 2px rgb(186, 131, 130) }
```

Border

The CSS property to change the border of an element to HunterLab 53.1821, 15.6624, 9.5002 is called "border". The border property can be set on classes, ids or directly on the HTML element.

This example shows the color as border, it can be applied via the CSS property "border" or "border-color".

```
.border, #border, table{ border:4px solid rgb(186, 131, 130) }
```


If only the border color should be changed use the property border-color.

```
.border{ border-color:rgb(186, 131, 130) }
```

If you want to add a box shadow in that color use:

Here you see how a box with a 4 pixel rgb(186, 131, 130) colored shadow looks like.

```
.boxshadow{ -moz-box-shadow:4px 4px 4px  
4px rgb(186, 131, 130); -webkit-box-  
shadow:4px 4px 4px 4px rgb(186, 131, 130);  
box-shadow:4px 4px 4px 4px rgb(186, 131,  
130) }
```

Background

The CSS property to change the background color of an element to HunterLab 53.1821, 15.6624, 9.5002 is called "background". The background property can be set on classes, ids or directly on the HTML element.

```
.background, #background, body{  
background: rgb(186, 131, 130) }
```

If only the background color should be changed can be used:

```
.background{ background-color: rgb(186,  
131, 130) }
```

This example shows the color as background, it is applied via the CSS property "background".

To optimize and compress your CSS code, you can use our [online CSS compressor and optimizer](#) based on csstidy. If you want to create a linear or radial gradient as background or border, check our [CSS Gradient Generator](#).

Hey! You found this booklet interesting? Support Converting Colors with the new Membership Option!

The pro membership hides all ads, plus gives you double the colors in the color bucket, and more awesome pro features!

[Learn more, Memberships starting at \\$2.50/m!](#)

**Follow me
on Twitter!**

@ConvertingColor