

Converting Colors

HunterLab(53.0314, 11.0053,
11.4573)

Have a look what the booklet for
HunterLab(53.0314, 11.0053,
11.4573) contains.

HunterLab(52.9992, 10.8288, 11.5152)	3
<i>Conversions</i>	4
<i>Details</i>	6
<i>Harmonies</i>	12
<i>Previews</i>	24
<i>Color Blindness Simulation</i>	28
<i>CSS Examples</i>	31

Color

**HunterLab(52.9992, 10.8288,
11.5152)**

Conversions

Conversions Part 1

Format	Color
Hex	B3867C
RGB	179, 134, 124
RGB Percent	70%, 53%, 49%
CMY	0.2980, 0.4745, 0.5137
CMYK	0.00, 0.25, 0.31, 0.30
HSL	11°, 27%, 59%
HSV	11°, 31%, 70%
XYZ	30.7536, 28.0892, 22.8697
YIQ	146.3150, 30.0300, 6.4300

Conversions

Conversions Part 2

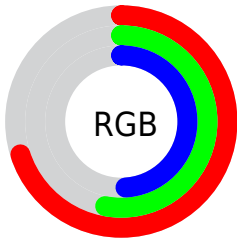
Format	Color
R_{YB}	179, 136, 124
Decimal	11765372
CIE Lab	59.97, 15.80, 12.10
CIE LCh	60, 19.902, 37.431
Yxy	28.0905, 0.3764, 0.3438
Android (android.graphics.Color)	4289955452 (0xFFB3867C)
YUV	146.3150, -11.0013, 28.6647
Hunter-Lab	52.9992, 10.8288, 11.5152

Details

The HunterLab color $52.9992, 10.8288, 11.5152$ is a dark color, and the websafe version is hex $CC9999$. A complement of this color would be $59.9288, -13.6237, -5.5040$, and the grayscale version is $53.7755, -2.8693, 2.9217$.

A 20% lighter version of the original color is $75.1983, 11.5343, 13.7433$, and $33.4793, 10.1777, 9.0195$ is the 20% darker color. If you saturate the color by 10%, you get $48.8938, 16.0624, 13.8408$, and if you desaturate by 10%, it is $57.3740, 5.8652, 9.0506$.

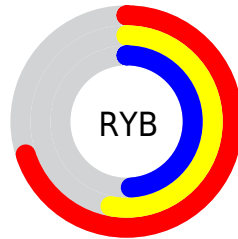
Distribution



Red (70%)

Green (53%)

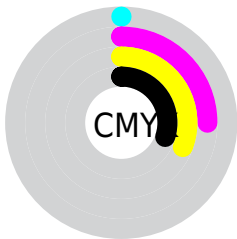
Blue (49%)



Red (70%)

Yellow (53%)

Blue (49%)

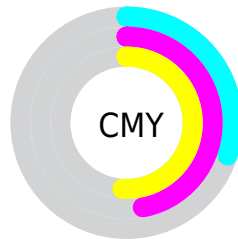


Cyan (0%)

Magenta (25%)

Yellow (31%)

Black (30%)



Cyan (30%)

Magenta (47%)

Yellow (51%)

Brightness & Saturation Gradients

These gradients show how the HunterLab color 52.9992, 10.8288, 11.5152 changes by changing the brightness by 10 percent. The first figure shows a shift by +10% for each color and the second figure -10%.

Similar to the brightness gradients but the following saturation gradients show a change of the HunterLab color 52.9992, 10.8288, 11.5152 by changing the saturation by 10% instead.

■ 52.9992, 10.8288,
11.5152

■ 52.9992, 10.8288,
11.5152

171.1429, 10.5303,
22.7432

■ 42.8881, 10.5281,
10.2620

■ 75.2521, 11.1796,
13.9908

■ 33.5159, 10.1326,
8.9837

■ 87.3152, 11.2508,
15.2238

■ 24.9477, 9.6241,
7.6638

■ 99.9617, 11.2602,
16.4592

■ 17.2675, 8.9803,
6.2732

113.1659, 11.2129,
17.6995

■ 10.5933, 8.1714,
5.4221

126.9052, 11.1130,
18.9467

0.0000, INF, NaN

0.0000, NaN, NaN

141.1595, 10.9640,

20.2024

0.0000, NaN, NaN

155.9108, 10.7689,
21.4676

0.0000, NaN, NaN

■ 52.9992, 10.8288,
11.5152

■ 52.9992, 10.8288,
11.5152

■ 48.8938, 16.0624,
13.8408

■ 57.3740, 5.8652,
9.0506

■ 45.0966, 21.5509,
15.9698

■ 61.9786, 1.1730,
6.4836

■ 41.6583, 27.2251,
17.8284

■ 66.7847, -3.2692,
3.8419

■ 38.6337, 32.9501,
19.3239

■ 71.7680, -7.4862,
1.1438

■ 36.0784, 38.5037,
20.3557

■ 76.9081, -11.5044,
-1.5986

■ 34.0409, 43.5770,
20.8433

■ 82.1886, -15.3490,
-4.3771

■ 32.6298, 47.5046,
20.9380

■ 87.5956, -19.0432,
-7.1863

■ 92.6809, -25.0874,
-3.8523

■ 93.9807, -26.9542,
-2.2470

Harmonies

Analogous

The Analogous color harmony consists of three colors that are next to each other on the color wheel.



53.0004, 14.4261, 4.8628



52.9992, 10.8288, 11.5152



53.0004, 3.6094, 15.3607

Triad

The Triadic color harmony groups three colors that are evenly spaced from another and form a triangle on the color wheel.



53.0004, 10.8267, 11.5160



53.0004, -17.1367, 8.5284



53.0004, -0.6935, -15.0274

Complementary

The Complementary color scheme is a pair of colors which are on the opposite of each other on the color wheel.



52.9992, 10.8288, 11.5152



59.9288, -13.6237, -5.5040

Split Complementary

Split-complementary colors differ from the complementary color scheme. The scheme consists of three colors, the original color and two neighbors of the complement color.



53.0004, -8.9774, -13.6321



52.9992, 10.8288, 11.5152



53.0004, -18.1281, 0.8278

Square

The Square scheme is like the rectangle color scheme, but the four colors are evenly spaced on the color wheel.



53.0004, 10.8267, 11.5160



53.0004, -12.4324, 13.8355



53.0004, -15.2317, -7.4970



53.0004, 7.5070, -11.0541

Rectangle

The Rectangle color scheme consists of four colors that form a rectangle on the color wheel.



52.9992, 10.8288, 11.5152



53.0004, -2.0941, 16.2202



53.0004, -15.2317, -7.4970



53.0004, -3.5635, -15.1802

Sweetspot

The Sweet Spot groups the original color and five complimentary colors.



53.0004, 10.8267, 11.5160



83.9394, 0.6129, 8.1264



51.8607, 22.9584, -11.0257



39.0798, 0.7013, 4.0626



95.4677, -5.0939, 5.1869



42.2927, -2.2566, 2.2978

Same Dimension

The Same Dimension uses a secret algorithm to generate beautiful new colors.



53.0004, 10.8267, 11.5160



67.0958, 19.2849, 17.5822



60.3428, -2.3168, 18.4059



29.5754, 0.2519, 2.8875



27.5585, 39.5254, 17.6734



5.6015, 4.9733, 3.5387

Inverse Universe

The Inverse Universe completely reimagines the original color for something new.



59.9288, -13.6237, -5.5040



78.2891, -20.4339, -9.9614



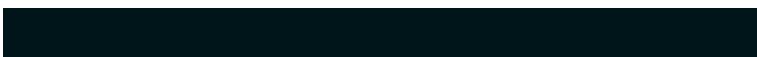
51.9475, -0.9775, -16.6832



30.5997, -3.3322, 0.3776



41.2440, -15.4592, -18.1795



7.7694, -3.3371, -2.5071

Previews

White Background



This preview shows how the HunterLab color 52.9992, 10.8288, 11.5152 looks on a white background.

Color Contrast Check

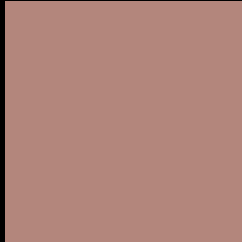
Large Text (above 18pt) WCAG AA ✓ Pass

Any Text WCAG AA × Fail

Large Text (above 18pt) WCAG AAA × Fail

Any Text WCAG AAA × Fail

Black Background



This preview shows how the HunterLab color 52.9992, 10.8288, 11.5152 looks on a black background.

Color Contrast Check

Large Text (above 18pt) WCAG AA ✓ Pass

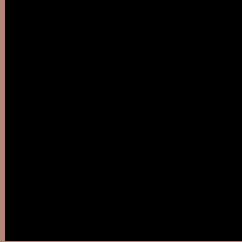
Any Text WCAG AA ✓ Pass

Large Text (above 18pt) WCAG AAA ✓ Pass

Any Text WCAG AAA × Fail

If you want to check with other color combinations, try the [Color Contrast Checker](#).

HunterLab 52.9992, 10.8288, 11.5152 Background



This preview shows how black text looks on a background with the HunterLab color 52.9992, 10.8288, 11.5152.



This preview shows how white text looks on a background with the HunterLab color 52.9992, 10.8288,

Color Blindness Simulation

Color vision deficiency is a very complex topic, and I could not describe the different causes any better than Wikipedia does, so if you want to learn more, you should check out their [article about color blindness](#).

Dichromacy



Original Color

52.9992, 10.8288, 11.5152

Protanopia

53.0196, -2.9001, 9.3946

Deuteranopia

52.9172, 3.6445, 11.6755



Tritanopia

52.8956, 15.3518, 4.6172

Trichromacy



Original Color

52.9992, 10.8288, 11.5152

Protanomaly

52.7878, 1.9871, 10.0105

Deuteranomaly

52.8955, 6.3601, 11.7011

Tritanomaly

52.8726, 13.6388, 7.1148

Monochromacy



Original Color

52.9992, 10.8288, 11.5152

Achromatopsia

53.6135, -2.8607, 2.9129

Achromatomaly

53.3386, 1.5687, 6.1669

CSS Examples

Text

The CSS property to change the color of the text to HunterLab 52.9992, 10.8288, 11.5152 is called "color". The color property can be set on classes, ids or directly on the HTML element.

This example shows how text in the color `rgb(179, 134, 124)` looks like.

```
.text, #text, p{  
    color:rgb(179, 134, 124)  
}
```

If you want to add a text shadow in that color use the text-shadow property, you can generate a text shadow directly with our [CSS Text Shadow Generator](#).

Here you see how black text with a 4 pixel rgb(179, 134, 124) colored shadow looks like.

```
.shadow{ text-shadow: 4px 4px 2px rgb(179, 134, 124) }
```

Border

The CSS property to change the border of an element to HunterLab 52.9992, 10.8288, 11.5152 is called "border". The border property can be set on classes, ids or directly on the HTML element.

This example shows the color as border, it can be applied via the CSS property "border" or "border-color".

```
.border, #border, table{ border:4px solid rgb(179, 134, 124) }
```


If only the border color should be changed use the property `border-color`.

```
.border{ border-color:rgb(179, 134, 124) }
```

If you want to add a box shadow in that color use:

Here you see how a box with a 4 pixel `rgb(179, 134, 124)` colored shadow looks like.

```
.boxshadow{ -moz-box-shadow:4px 4px 4px  
4px rgb(179, 134, 124); -webkit-box-  
shadow:4px 4px 4px 4px rgb(179, 134, 124);  
box-shadow:4px 4px 4px 4px rgb(179, 134,  
124) }
```

Background

The CSS property to change the background color of an element to HunterLab 52.9992, 10.8288, 11.5152 is called "background". The background property can be set on classes, ids or directly on the HTML element.

```
.background, #background, body{  
background: rgb(179, 134, 124) }
```

If only the background color should be changed can be used:

```
.background{ background-color: rgb(179,  
134, 124) }
```

This example shows the color as background, it is applied via the CSS property "background".

To optimize and compress your CSS code, you can use our [online CSS compressor and optimizer](#) based on csstidy. If you want to create a linear or radial gradient as background or border, check our [CSS Gradient Generator](#).

Hey! You found this booklet interesting? Support Converting Colors with the new Membership Option!

The pro membership hides all ads, plus gives you double the colors in the color bucket, and more awesome pro features!

[Learn more, Memberships starting at \\$2.50/m!](#)

**Follow me
on Twitter!**

@ConvertingColor