

Converting Colors

HunterLab(53.0401, 10.2979,
9.4670)

Have a look what the booklet for
HunterLab(53.0401, 10.2979,
9.4670) contains.

HunterLab(53.1602, 10.2478, 9.7727)	3
<i>Conversions</i>	4
<i>Details</i>	6
<i>Harmonies</i>	12
<i>Previews</i>	24
<i>Color Blindness Simulation</i>	28
<i>CSS Examples</i>	31

Color

**HunterLab(53.1602, 10.2478,
9.7727)**

Conversions

Conversions Part 1

Format	Color
Hex	B18781
RGB	177, 135, 129
RGB Percent	69%, 53%, 51%
CMY	0.3059, 0.4706, 0.4941
CMYK	0.00, 0.24, 0.27, 0.31
HSL	8°, 24%, 60%
HSV	8°, 27%, 69%
XYZ	30.7579, 28.2601, 24.6026
YIQ	146.8740, 26.9580, 7.0380

Conversions

Conversions Part 2

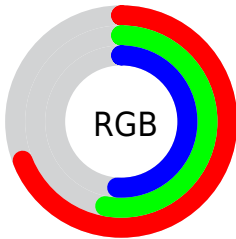
Format	Color
RYB	177, 136, 129
Decimal	11634561
CIELab	60.12, 15.16, 9.43
CIELCh	60, 17.852, 31.893
Yxy	28.2614, 0.3678, 0.3380
Android (android.graphics.Color)	4289824641 (0xFFB18781)
YUV	146.8740, -8.8119, 26.4205
Hunter-Lab	53.1602, 10.2478, 9.7727

Details

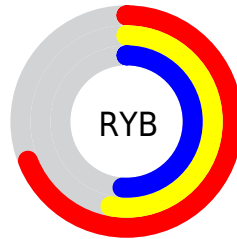
The HunterLab color **53.1602, 10.2478, 9.7727** is a light color, and the websafe version is hex **CC9999**. A complement of this color would be **60.7998, -13.7685, -3.3386**, and the grayscale version is **53.9928, -2.8809, 2.9335**.

A 20% lighter version of the original color is **75.2778, 10.6103, 11.7149**, and **33.5963, 9.5583, 7.4756** is the 20% darker color. If you saturate the color by 10%, you get **48.8046, 15.8157, 11.9742**, and if you desaturate by 10%, it is **57.8049, 4.9424, 7.5186**.

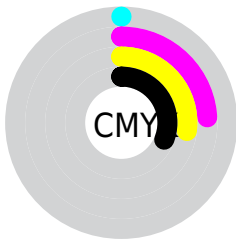
Distribution



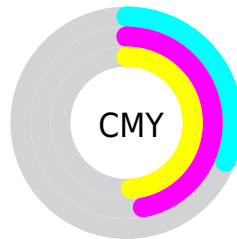
- Red (69%)
- Green (53%)
- Blue (51%)



- Red (69%)
- Yellow (53%)
- Blue (51%)



- Cyan (0%)
- Magenta (24%)
- Yellow (27%)
- Black (31%)



- Cyan (31%)
- Magenta (47%)
- Yellow (49%)

Brightness & Saturation Gradients

These gradients show how the HunterLab color 53.1602, 10.2478, 9.7727 changes by changing the brightness by 10 percent. The first figure shows a shift by +10% for each color and the second figure -10%.

Similar to the brightness gradients but the following saturation gradients show a change of the HunterLab color 53.1602, 10.2478, 9.7727 by changing the saturation by 10% instead.

■ 53.1602, 10.2478,
9.7727

■ 53.1602, 10.2478,
9.7727

171.3808, 9.7041,
19.9027

■ 43.0381, 9.9808,
8.6837

■ 75.4331, 10.5363,
11.9560

■ 33.6541, 9.6211,
7.5857

■ 87.5053, 10.5783,
13.0565

■ 25.0730, 9.1506,
6.4680

■ 100.1606, 10.5599,
14.1665

■ 17.3784, 8.5473,
5.3099

113.3732, 10.4857,
15.2877

■ 10.6875, 7.7810,
4.3693

127.1206, 10.3598,
16.4211

■ 1.1724, 56.2738,
0.8206

141.3826, 10.1857,

0.0000, NaN, NaN

17.5677

0.0000, NaN, NaN

156.1414, 9.9662,
18.7281

0.0000, NaN, NaN

■ 53.1602, 10.2478,
9.7727

■ 53.1602, 10.2478,
9.7727

■ 48.8046, 15.8157,
11.9742

■ 57.8049, 4.9424,
7.5186

■ 44.7831, 21.6257,
14.0776

■ 62.6946, -0.0987,
5.2357

■ 41.1546, 27.5958,
16.0178

■ 67.7977, -4.8976,
2.9404

■ 37.9837, 33.5636,
17.7026

■ 73.0873, -9.4803,
0.6408

■ 35.3370, 39.2619,
19.0181

■ 78.5418, -13.8742,
-1.6592

■ 33.2721, 44.3244,
19.8522

■ 84.1433, -18.1052,
-3.9580

■ 31.8183, 48.3402,
20.1796

■ 89.8769, -22.1967,
-6.2557

■ 31.5059, 49.2310,
20.2757

■ 93.8548, -27.4220,
-2.4129

Harmonies

Analogous

The Analogous color harmony consists of three colors that are next to each other on the color wheel.



53.1614, 12.6884, 3.3542



53.1602, 10.2478, 9.7727



53.1614, 4.2754, 13.8235

Triad

The Triadic color harmony groups three colors that are evenly spaced from another and form a triangle on the color wheel.



53.1614, 10.2458, 9.7736



53.1614, -15.2114, 9.0775



53.1614, -2.3522, -13.0915

Complementary

The Complementary color scheme is a pair of colors which are on the opposite of each other on the color wheel.



53.1602, 10.2478, 9.7727



60.7998, -13.7685, -3.3386

Split Complementary

Split-complementary colors differ from the complementary color scheme. The scheme consists of three colors, the original color and two neighbors of the complement color.



53.1614, -9.5987, -11.0000



53.1602, 10.2478, 9.7727



53.1614, -16.7671, 2.4290

Square

The Square scheme is like the rectangle color scheme, but the four colors are evenly spaced on the color wheel.



53.1614, 10.2458, 9.7736



53.1614, -10.3958, 13.4634



53.1614, -14.7699, -5.0495



53.1614, 5.1641, -10.4221

Rectangle

The Rectangle color scheme consists of four colors that form a rectangle on the color wheel.



53.1602, 10.2478, 9.7727



53.1614, -0.7474, 14.9747



53.1614, -14.7699, -5.0495



53.1614, -4.8995, -12.9210

Sweetspot

The Sweet Spot groups the original color and five complimentary colors.



53.1614, 10.2458, 9.7736



83.2219, 0.5397, 7.3190



52.9184, 19.9567, -10.4341



38.2844, 0.7086, 3.6183



94.3401, -5.0338, 5.1257



41.3092, -2.2042, 2.2444

Same Dimension

The Same Dimension uses a secret algorithm to generate beautiful new colors.



53.1614, 10.2458, 9.7736



67.3383, 18.4764, 14.9893



59.6584, -1.4057, 16.0956



29.4464, 0.4747, 2.7448



26.9122, 41.5961, 17.3114



5.3134, 5.7505, 3.3748

Inverse Universe

The Inverse Universe completely reimagines the original color for something new.



60.7998, -13.7685, -3.3386



79.8330, -20.9916, -6.5006



53.6972, -2.6031, -12.8850



30.7352, -3.5494, 0.5385



43.9460, -19.0001, -13.9128



8.1125, -3.7720, -1.9973

Previews

White Background



This preview shows how the HunterLab color 53.1602, 10.2478, 9.7727 looks on a white background.

Color Contrast Check

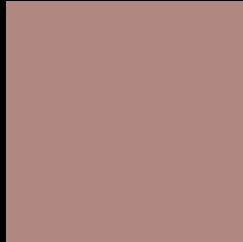
Large Text (above 18pt) WCAG AA ✓ Pass

Any Text WCAG AA ✗ Fail

Large Text (above 18pt) WCAG AAA ✗ Fail

Any Text WCAG AAA ✗ Fail

Black Background



This preview shows how the HunterLab color 53.1602, 10.2478, 9.7727 looks on a black background.

Color Contrast Check

Large Text (above 18pt) WCAG AA ✓ Pass

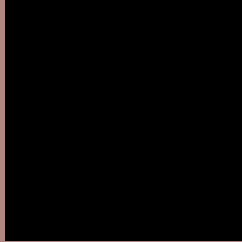
Any Text WCAG AA ✓ Pass

Large Text (above 18pt) WCAG AAA ✓ Pass

Any Text WCAG AAA × Fail

If you want to check with other color combinations, try the [Color Contrast Checker](#).

HunterLab 53.1602, 10.2478, 9.7727 Background



This preview shows how black text looks on a background with the HunterLab color 53.1602, 10.2478, 9.7727.



This preview shows how white text looks on a background with the HunterLab color 53.1602, 10.2478, 9.7727.

Color Blindness Simulation

Color vision deficiency is a very complex topic, and I could not describe the different causes any better than Wikipedia does, so if you want to learn more, you should check out their [article about color blindness](#).

Dichromacy



Original Color

53.1602, 10.2478, 9.7727

Protanopia

53.3442, -2.9846, 7.7500

Deuteranopia

53.2109, 3.4639, 10.0938



Tritanopia

53.2371, 13.9135, 4.1069

Trichromacy



Original Color

53.1602, 10.2478, 9.7727

Protanomaly

53.0936, 1.8504, 8.3709

Deuteranomaly

53.0759, 5.8142, 9.9938

Tritanomaly

53.2449, 12.3315, 6.2504

Monochromacy



Original Color

53.1602, 10.2478, 9.7727

Achromatopsia

54.0158, -2.8821, 2.9348

Achromatomaly

53.6726, 1.3769, 5.6892

CSS Examples

Text

The CSS property to change the color of the text to HunterLab 53.1602, 10.2478, 9.7727 is called "color". The color property can be set on classes, ids or directly on the HTML element.

This example shows how text in the color `rgb(177, 135, 129)` looks like.

```
.text, #text, p{  
    color:rgb(177, 135, 129)  
}
```

If you want to add a text shadow in that color use the text-shadow property, you can generate a text shadow directly with our [CSS Text Shadow Generator](#).

Here you see how black text with a 4 pixel rgb(177, 135, 129) colored shadow looks like.

```
.shadow{ text-shadow: 4px 4px 2px rgb(177, 135, 129) }
```

Border

The CSS property to change the border of an element to HunterLab 53.1602, 10.2478, 9.7727 is called "border". The border property can be set on classes, ids or directly on the HTML element.

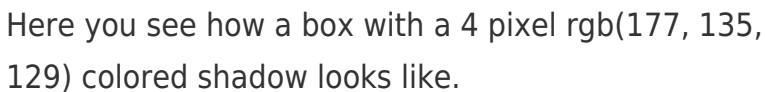
This example shows the color as border, it can be applied via the CSS property "border" or "border-color".

```
.border, #border, table{ border:4px solid rgb(177, 135, 129) }
```


If only the border color should be changed use the property `border-color`.

```
.border{ border-color:rgb(177, 135, 129) }
```

If you want to add a box shadow in that color use:



Here you see how a box with a 4 pixel `rgb(177, 135, 129)` colored shadow looks like.

```
.boxshadow{ -moz-box-shadow:4px 4px 4px  
4px rgb(177, 135, 129); -webkit-box-  
shadow:4px 4px 4px 4px rgb(177, 135, 129);  
box-shadow:4px 4px 4px 4px rgb(177, 135,  
129) }
```

Background

The CSS property to change the background color of an element to HunterLab 53.1602, 10.2478, 9.7727 is called "background". The background property can be set on classes, ids or directly on the HTML element.

```
.background, #background, body{  
background: rgb(177, 135, 129) }
```

If only the background color should be changed can be used:

```
.background{ background-color: rgb(177,  
135, 129) }
```

This example shows the color as background, it is applied via the CSS property "background".

To optimize and compress your CSS code, you can use our [online CSS compressor and optimizer](#) based on csstidy. If you want to create a linear or radial gradient as background or border, check our [CSS Gradient Generator](#).

Hey! You found this booklet interesting? Support Converting Colors with the new Membership Option!

The pro membership hides all ads, plus gives you double the colors in the color bucket, and more awesome pro features!

[Learn more, Memberships starting at \\$2.50/m!](#)

**Follow me
on Twitter!**

@ConvertingColor