

Converting Colors

HunterLab(53.0820, 12.4541,
3.9582)

Have a look what the booklet for
HunterLab(53.0820, 12.4541,
3.9582) contains.

HunterLab(53.1634, 12.3499, 3.9939)	3
<i>Conversions</i>	4
<i>Details</i>	6
<i>Harmonies</i>	12
<i>Previews</i>	24
<i>Color Blindness Simulation</i>	28
<i>CSS Examples</i>	31

Color

**HunterLab(53.1634, 12.3499,
3.9939)**

Conversions

Conversions Part 1

Format	Color
Hex	B0868F
RGB	176, 134, 143
RGB Percent	69%, 53%, 56%
CMY	0.3098, 0.4745, 0.4392
CMYK	0.00, 0.24, 0.19, 0.31
HSL	347°, 21%, 61%
HSV	347°, 24%, 69%
XYZ	31.3875, 28.2635, 29.7877
YIQ	147.5840, 22.1430, 11.7030

Conversions

Conversions Part 2

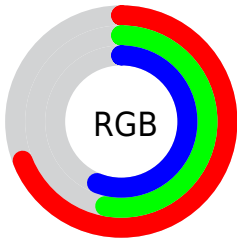
Format	Color
R_{YB}	176, 134, 143
Decimal	11568783
CIE Lab	60.13, 17.47, 1.42
CIE LCh	60, 17.528, 4.643
Yxy	28.2648, 0.3509, 0.3160
Android (android.graphics.Color)	4289758863 (0xFFB0868F)
YUV	147.5840, -2.2599, 24.9208
Hunter-Lab	53.1634, 12.3499, 3.9939

Details

The HunterLab color **53.1634, 12.3499, 3.9939** is a light color, and the websafe version is hex **CC9999**. A complement of this color would be **62.3776, -16.6365, 3.3942**, and the grayscale version is **54.2545, -2.8949, 2.9478**.

A 20% lighter version of the original color is **75.3178, 13.0625, 5.0567**, and **33.6778, 11.6338, 2.7240** is the 20% darker color. If you saturate the color by 10%, you get **48.3776, 19.2808, 4.6207**, and if you desaturate by 10%, it is **58.2983, 5.5711, 3.6569**.

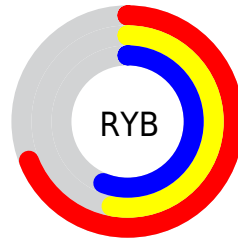
Distribution



Red (69%)

Green (53%)

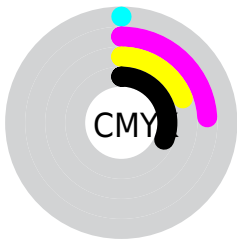
Blue (56%)



Red (69%)

Yellow (53%)

Blue (56%)

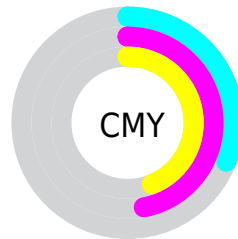


Cyan (0%)

Magenta (24%)

Yellow (19%)

Black (31%)



Cyan (31%)

Magenta (47%)

Yellow (44%)

Brightness & Saturation Gradients

These gradients show how the HunterLab color 53.1634, 12.3499, 3.9939 changes by changing the brightness by 10 percent. The first figure shows a shift by +10% for each color and the second figure -10%.

Similar to the brightness gradients but the following saturation gradients show a change of the HunterLab color 53.1634, 12.3499, 3.9939 by changing the saturation by 10% instead.

■ 53.1634, 12.3499,
3.9939

■ 53.1634, 12.3499,
3.9939

171.3855, 12.6521,
10.9649

■ 43.0411, 11.9683,
3.3673

■ 75.4366, 12.8522,
5.3462

■ 33.6568, 11.4877,
2.7737

■ 87.5091, 12.9944,
6.0673

■ 25.0754, 10.8895,
2.2159

■ 100.1645, 13.0722,
6.8171

■ 17.3806, 10.1515,
1.6954

113.3773, 13.0908,
7.5947

■ 10.6894, 9.2462,
1.2135

127.1248, 13.0547,
8.3990

■ 1.1866, 64.0923,
0.8306

141.3870, 12.9674,

0.0000, NaN, NaN

9.2294

0.0000, NaN, NaN

156.1460, 12.8323,
10.0849

0.0000, NaN, NaN

■ 53.1634, 12.3499,
3.9939

■ 53.1634, 12.3499,
3.9939

■ 48.3776, 19.2808,
4.6207

■ 58.2983, 5.5711,
3.6569

■ 44.0028, 26.2837,
5.5807

■ 63.7256, -1.0205,
3.5610

■ 40.1187, 33.1779,
6.9114

■ 69.4040, -7.4277,
3.6669

■ 36.8128, 39.6540,
8.6192

■ 75.2997, -13.6660,
3.9407

■ 34.1715, 45.2623,
10.6530

■ 81.3856, -19.7565,
4.3548

■ 32.2590, 49.4863,
12.8812

■ 87.6400, -25.7212,
4.8868

■ 31.0867, 51.9346,
15.0967

■ 93.2899, -30.5362,
4.6517

■ 30.6075, 52.8673,
16.2820

■ 93.7458, -27.9205,
-1.8339

■ 93.7924, -27.6539,
-2.4951

Harmonies

Analogous

The Analogous color harmony consists of three colors that are next to each other on the color wheel.



53.1646, 10.8628, -3.3379



53.1634, 12.3499, 3.9939



53.1646, 9.5825, 10.1319

Triad

The Triadic color harmony groups three colors that are evenly spaced from another and form a triangle on the color wheel.



53.1646, 12.3480, 3.9949



53.1646, -10.8093, 13.0089



53.1646, -8.8893, -11.0911

Complementary

The Complementary color scheme is a pair of colors which are on the opposite of each other on the color wheel.



53.1634, 12.3499, 3.9939



62.3776, -16.6365, 3.3942

Split Complementary

Split-complementary colors differ from the complementary color scheme. The scheme consists of three colors, the original color and two neighbors of the complement color.



53.1646, -14.2164, -5.5308



53.1634, 12.3499, 3.9939



53.1646, -15.2810, 8.4522

Square

The Square scheme is like the rectangle color scheme, but the four colors are evenly spaced on the color wheel.



53.1646, 12.3480, 3.9949



53.1646, -4.0045, 14.8556



53.1646, -16.4931, 1.7689



53.1646, -1.6646, -12.7161

Rectangle

The Rectangle color scheme consists of four colors that form a rectangle on the color wheel.



53.1634, 12.3499, 3.9939



53.1646, 5.7860, 12.9309



53.1646, -16.4931, 1.7689



53.1646, -10.9480, -9.5857

Sweetspot

The Sweet Spot groups the original color and five complimentary colors.



53.1646, 12.3480, 3.9949



83.3975, 1.4927, 4.8054



53.2830, 14.8864, -12.6118



38.6270, 0.9312, 2.2393



94.3401, -5.0338, 5.1257



41.3092, -2.2042, 2.2444

Same Dimension

The Same Dimension uses a secret algorithm to generate beautiful new colors.



53.1646, 12.3480, 3.9949



67.8953, 21.8805, 5.8041



56.1066, 5.1213, 10.8266



29.2131, 1.2322, 1.7252



26.2314, 45.3359, 13.7421



4.7440, 8.3766, 1.1094

Inverse Universe

The Inverse Universe completely reimagines the original color for something new.



53.1646, 12.3480, 3.9949



67.8953, 21.8805, 5.8041



58.9835, -9.5208, -5.1092



29.2131, 1.2322, 1.7252



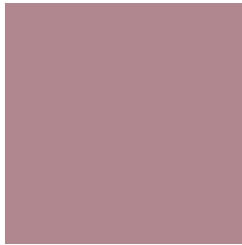
26.2314, 45.3359, 13.7421



4.7440, 8.3766, 1.1094

Previews

White Background



This preview shows how the HunterLab color 53.1634, 12.3499, 3.9939 looks on a white background.

Color Contrast Check

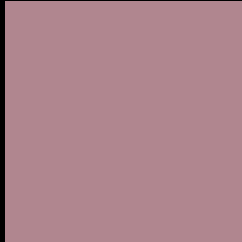
Large Text (above 18pt) WCAG AA ✓ Pass

Any Text WCAG AA × Fail

Large Text (above 18pt) WCAG AAA × Fail

Any Text WCAG AAA × Fail

Black Background



This preview shows how the HunterLab color 53.1634, 12.3499, 3.9939 looks on a black background.

Color Contrast Check

Large Text (above 18pt) WCAG AA ✓ Pass

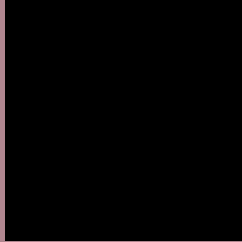
Any Text WCAG AA ✓ Pass

Large Text (above 18pt) WCAG AAA ✓ Pass

Any Text WCAG AAA × Fail

If you want to check with other color combinations, try the [Color Contrast Checker](#).

HunterLab 53.1634, 12.3499, 3.9939 Background



This preview shows how black text looks on a background with the HunterLab color 53.1634, 12.3499, 3.9939.



This preview shows how white text looks on a background with the HunterLab color 53.1634, 12.3499,

Color Blindness Simulation

Color vision deficiency is a very complex topic, and I could not describe the different causes any better than Wikipedia does, so if you want to learn more, you should check out their [article about color blindness](#).

Dichromacy



Original Color

53.1634, 12.3499, 3.9939

Protanopia

53.2161, -1.1187, 1.0928

Deuteranopia

53.0874, 3.7915, 4.1974



Tritanopia

53.1920, 12.4986, 3.5851

Trichromacy



Original Color

53.1634, 12.3499, 3.9939

Protanomaly

53.0395, 3.9202, 1.8945

Deuteranomaly

53.1384, 6.7639, 4.3083

Tritanomaly

53.1920, 12.4986, 3.5851

Monochromacy



Original Color

53.1634, 12.3499, 3.9939

Achromatopsia

54.4186, -2.9036, 2.9567

Achromatomaly

53.8418, 2.2888, 3.2712

CSS Examples

Text

The CSS property to change the color of the text to HunterLab 53.1634, 12.3499, 3.9939 is called "color". The color property can be set on classes, ids or directly on the HTML element.

This example shows how text in the color `rgb(176, 134, 143)` looks like.

```
.text, #text, p{  
    color:rgb(176, 134, 143)  
}
```

If you want to add a text shadow in that color use the text-shadow property, you can generate a text shadow directly with our [CSS Text Shadow Generator](#).

Here you see how black text with a 4 pixel rgb(176, 134, 143) colored shadow looks like.

```
.shadow{ text-shadow: 4px 4px 2px rgb(176, 134, 143) }
```

Border

The CSS property to change the border of an element to HunterLab 53.1634, 12.3499, 3.9939 is called "border". The border property can be set on classes, ids or directly on the HTML element.

This example shows the color as border, it can be applied via the CSS property "border" or "border-color".

```
.border, #border, table{ border:4px solid rgb(176, 134, 143) }
```


If only the border color should be changed use the property `border-color`.

```
.border{ border-color:rgb(176, 134, 143) }
```

If you want to add a box shadow in that color use:

Here you see how a box with a 4 pixel `rgb(176, 134, 143)` colored shadow looks like.

```
.boxshadow{ -moz-box-shadow:4px 4px 4px  
4px rgb(176, 134, 143); -webkit-box-  
shadow:4px 4px 4px 4px rgb(176, 134, 143);  
box-shadow:4px 4px 4px 4px rgb(176, 134,  
143) }
```

Background

The CSS property to change the background color of an element to HunterLab 53.1634, 12.3499, 3.9939 is called "background". The background property can be set on classes, ids or directly on the HTML element.

```
.background, #background, body{  
background: rgb(176, 134, 143) }
```

If only the background color should be changed can be used:

```
.background{ background-color: rgb(176,  
134, 143) }
```

This example shows the color as background, it is applied via the CSS property "background".

To optimize and compress your CSS code, you can use our [online CSS compressor and optimizer](#) based on csstidy. If you want to create a linear or radial gradient as background or border, check our [CSS Gradient Generator](#).

Hey! You found this booklet interesting? Support Converting Colors with the new Membership Option!

The pro membership hides all ads, plus gives you double the colors in the color bucket, and more awesome pro features!

[Learn more, Memberships starting at \\$2.50/m!](#)

**Follow me
on Twitter!**

@ConvertingColor