

Converting Colors

HunterLab(53.1140, 9.3322,
10.5989)

Have a look what the booklet for
HunterLab(53.1140, 9.3322,
10.5989) contains.

HunterLab(53.0003, 9.6311, 10.3657)	3
<i>Conversions</i>	4
<i>Details</i>	6
<i>Harmonies</i>	12
<i>Previews</i>	24
<i>Color Blindness Simulation</i>	28
<i>CSS Examples</i>	31

Color

**HunterLab(53.0003, 9.6311,
10.3657)**

Conversions

Conversions Part 1

Format	Color
Hex	B0877F
RGB	176, 135, 127
RGB Percent	69%, 53%, 50%
CMY	0.3098, 0.4706, 0.5020
CMYK	0.00, 0.23, 0.28, 0.31
HSL	10°, 24%, 59%
HSV	10°, 28%, 69%
XYZ	30.3992, 28.0903, 23.8984
YIQ	146.3470, 27.0040, 6.2040

Conversions

Conversions Part 2

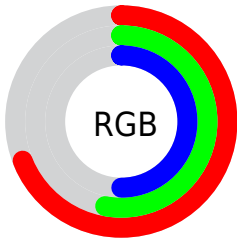
Format	Color
R_{YB}	176, 137, 127
Decimal	11569023
CIE Lab	59.97, 14.48, 10.34
CIE LCh	60, 17.790, 35.544
Yxy	28.0916, 0.3690, 0.3410
Android (android.graphics.Color)	4289759103 (0xFFB0877F)
YUV	146.3470, -9.5381, 26.0057
Hunter-Lab	53.0003, 9.6311, 10.3657

Details

The HunterLab color **53.0003, 9.6311, 10.3657** is a dark color, and the websafe version is hex **CC9999**. A complement of this color would be **59.7083, -13.0364, -4.2229**, and the grayscale version is **53.7835, -2.8698, 2.9222**.

A 20% lighter version of the original color is **75.1116, 9.9546, 12.3732**, and **33.4434, 8.9900, 7.9869** is the 20% darker color. If you saturate the color by 10%, you get **48.8294, 14.8454, 12.6431**, and if you desaturate by 10%, it is **57.4358, 4.6806, 7.9869**.

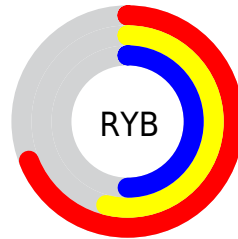
Distribution



Red (69%)

Green (53%)

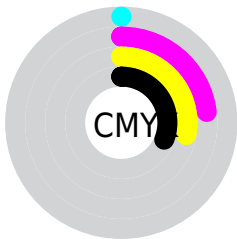
Blue (50%)



Red (69%)

Yellow (54%)

Blue (50%)

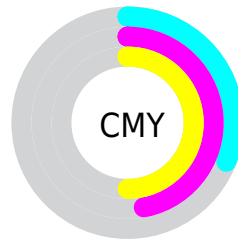


Cyan (0%)

Magenta (23%)

Yellow (28%)

Black (31%)



Cyan (31%)

Magenta (47%)

Yellow (50%)

Brightness & Saturation Gradients

These gradients show how the HunterLab color 53.0003, 9.6311, 10.3657 changes by changing the brightness by 10 percent. The first figure shows a shift by +10% for each color and the second figure -10%.

Similar to the brightness gradients but the following saturation gradients show a change of the HunterLab color 53.0003, 9.6311, 10.3657 by changing the saturation by 10% instead.

■ 53.0003, 9.6311,
10.3657

■ 53.0003, 9.6311,
10.3657

171.1445, 8.8439,
20.8672

■ 42.8891, 9.3971,
9.2211

■ 75.2534, 9.8582,
12.6479

■ 33.5168, 9.0720,
8.0620

■ 87.3165, 9.8715,
13.7932

■ 24.9485, 8.6380,
6.8757

■ 99.9631, 9.8253,
14.9457

■ 17.2683, 8.0733,
5.6385

113.1673, 9.7244,
16.1071

■ 10.5939, 7.3470,
4.7354

126.9067, 9.5726,
17.2791

0.0000, INF, NaN

0.0000, NaN, NaN

141.1610, 9.3735,

18.4626

0.0000, NaN, NaN

155.9124, 9.1298,
19.6584

0.0000, NaN, NaN

■ 53.0003, 9.6311,
10.3657

■ 53.0003, 9.6311,
10.3657

■ 48.8294, 14.8454,
12.6431

■ 57.4358, 4.6806,
7.9869

■ 44.9619, 20.3125,
14.7691

■ 62.0967, -0.0082,
5.5366

■ 41.4489, 25.9705,
16.6773

■ 66.9551, -4.4576,
3.0366

■ 38.3467, 31.6921,
18.2793

■ 71.9870, -8.6930,
0.5008

■ 35.7136, 37.2620,
19.4722

■ 77.1728, -12.7406,
-2.0625

■ 33.6023, 42.3727,
20.1609

■ 82.4963, -16.6249,
-4.6478

■ 32.0431, 46.6466,
20.3595

■ 87.9439, -20.3685,
-7.2520

■ 31.7750, 47.4081,
20.4096

■ 93.0476, -26.5929,
-3.4141

■ 93.7924, -27.6539,
-2.4951

Harmonies

Analogous

The Analogous color harmony consists of three colors that are next to each other on the color wheel.



53.0015, 12.5594, 4.2142



53.0003, 9.6311, 10.3657



53.0015, 3.3741, 14.0714

Triad

The Triadic color harmony groups three colors that are evenly spaced from another and form a triangle on the color wheel.



53.0015, 9.6291, 10.3665



53.0015, -15.5228, 8.3384



53.0015, -1.4076, -12.9518

Complementary

The Complementary color scheme is a pair of colors which are on the opposite of each other on the color wheel.



53.0003, 9.6311, 10.3657



59.7083, -13.0364, -4.2229

Split Complementary

Split-complementary colors differ from the complementary color scheme. The scheme consists of three colors, the original color and two neighbors of the complement color.



53.0015, -8.7629, -11.4394



53.0003, 9.6311, 10.3657



53.0015, -16.6435, 1.5205

Square

The Square scheme is like the rectangle color scheme, but the four colors are evenly spaced on the color wheel.



53.0015, 9.6291, 10.3665



53.0015, -11.0844, 13.0215



53.0015, -14.2365, -5.8763



53.0015, 5.9608, -9.7588

Rectangle

The Rectangle color scheme consists of four colors that form a rectangle on the color wheel.



53.0003, 9.6311, 10.3657



53.0015, -1.6873, 14.9874



53.0015, -14.2365, -5.8763



53.0015, -3.9648, -12.9816

Sweetspot

The Sweet Spot groups the original color and five complimentary colors.



53.0015, 9.6291, 10.3665



83.4350, 0.1733, 7.5562



52.2117, 20.1592, -9.9042



38.4009, 0.5069, 3.7472



94.3401, -5.0338, 5.1257



41.3092, -2.2042, 2.2444

Same Dimension

The Same Dimension uses a secret algorithm to generate beautiful new colors.



53.0015, 9.6291, 10.3665



68.1082, 16.9545, 15.7404



59.5880, -2.1068, 16.7024



29.5332, 0.3246, 2.8409



27.3261, 40.2616, 17.5431



5.5091, 5.2165, 3.4860

Inverse Universe

The Inverse Universe completely reimagines the original color for something new.



59.7083, -13.0364, -4.2229



78.8826, -19.6049, -7.7285



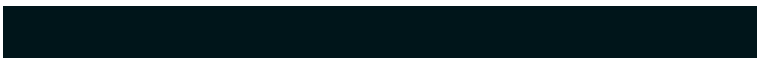
52.5727, -1.7378, -13.9579



30.6439, -3.4031, 0.4302



42.1197, -16.6240, -16.7595



7.8809, -3.4798, -2.3386

Previews

White Background



This preview shows how the HunterLab color 53.0003, 9.6311, 10.3657 looks on a white background.

Color Contrast Check

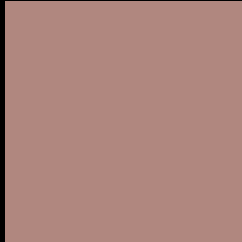
Large Text (above 18pt) WCAG AA ✓ Pass

Any Text WCAG AA × Fail

Large Text (above 18pt) WCAG AAA × Fail

Any Text WCAG AAA × Fail

Black Background



This preview shows how the HunterLab color 53.0003, 9.6311, 10.3657 looks on a black background.

Color Contrast Check

Large Text (above 18pt) WCAG AA ✓ Pass

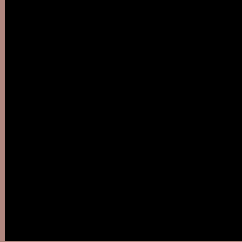
Any Text WCAG AA ✓ Pass

Large Text (above 18pt) WCAG AAA ✓ Pass

Any Text WCAG AAA × Fail

If you want to check with other color combinations, try the [Color Contrast Checker](#).

HunterLab 53.0003, 9.6311, 10.3657 Background



This preview shows how black text looks on a background with the HunterLab color 53.0003, 9.6311, 10.3657.



This preview shows how white text looks on a background with the HunterLab color 53.0003, 9.6311,

Color Blindness Simulation

Color vision deficiency is a very complex topic, and I could not describe the different causes any better than Wikipedia does, so if you want to learn more, you should check out their [article about color blindness](#).

Dichromacy



Original Color

53.0003, 9.6311, 10.3657

Protanopia

53.0061, -2.7943, 8.1955

Deuteranopia

52.8875, 3.6893, 10.5255



Tritanopia

53.1255, 13.5600, 3.9711

Trichromacy



Original Color

53.0003, 9.6311, 10.3657

Protanomaly

52.9456, 1.2457, 8.9969

Deuteranomaly

53.0267, 5.5528, 10.7019

Tritanomaly

53.1069, 11.8362, 6.5091

Monochromacy



Original Color

53.0003, 9.6311, 10.3657

Achromatopsia

53.6135, -2.8607, 2.9129

Achromatomaly

53.2712, 1.3942, 5.6640

CSS Examples

Text

The CSS property to change the color of the text to HunterLab 53.0003, 9.6311, 10.3657 is called "color". The color property can be set on classes, ids or directly on the HTML element.

This example shows how text in the color `rgb(176, 135, 127)` looks like.

```
.text, #text, p{  
    color:rgb(176, 135, 127)  
}
```

If you want to add a text shadow in that color use the text-shadow property, you can generate a text shadow directly with our [CSS Text Shadow Generator](#).

Here you see how black text with a 4 pixel rgb(176, 135, 127) colored shadow looks like.

```
.shadow{ text-shadow: 4px 4px 2px rgb(176, 135, 127) }
```

Border

The CSS property to change the border of an element to HunterLab 53.0003, 9.6311, 10.3657 is called "border". The border property can be set on classes, ids or directly on the HTML element.

This example shows the color as border, it can be applied via the CSS property "border" or "border-color".

```
.border, #border, table{ border:4px solid rgb(176, 135, 127) }
```


If only the border color should be changed use the property `border-color`.

```
.border{ border-color:rgb(176, 135, 127) }
```

If you want to add a box shadow in that color use:

Here you see how a box with a 4 pixel `rgb(176, 135, 127)` colored shadow looks like.

```
.boxshadow{ -moz-box-shadow:4px 4px 4px  
4px rgb(176, 135, 127); -webkit-box-  
shadow:4px 4px 4px 4px rgb(176, 135, 127);  
box-shadow:4px 4px 4px 4px rgb(176, 135,  
127) }
```

Background

The CSS property to change the background color of an element to HunterLab 53.0003, 9.6311, 10.3657 is called "background". The background property can be set on classes, ids or directly on the HTML element.

```
.background, #background, body{  
background: rgb(176, 135, 127) }
```

If only the background color should be changed can be used:

```
.background{ background-color: rgb(176,  
135, 127) }
```

This example shows the color as background, it is applied via the CSS property "background".

To optimize and compress your CSS code, you can use our [online CSS compressor and optimizer](#) based on csstidy. If you want to create a linear or radial gradient as background or border, check our [CSS Gradient Generator](#).

Hey! You found this booklet interesting? Support Converting Colors with the new Membership Option!

The pro membership hides all ads, plus gives you double the colors in the color bucket, and more awesome pro features!

[Learn more, Memberships starting at \\$2.50/m!](#)

**Follow me
on Twitter!**

@ConvertingColor