

Converting Colors

HunterLab(53.1293, 8.7960,
20.7892)

Have a look what the booklet for
HunterLab(53.1293, 8.7960,
20.7892) contains.

HunterLab(53.1239, 8.7022, 20.8039)	3
<i>Conversions</i>	4
<i>Details</i>	6
<i>Harmonies</i>	12
<i>Previews</i>	24
<i>Color Blindness Simulation</i>	28
<i>CSS Examples</i>	31

Color

**HunterLab(53.1239, 8.7022,
20.8039)**

Conversions

Conversions Part 1

Format	Color
Hex	B7875F
RGB	183, 135, 95
RGB Percent	72%, 53%, 37%
CMY	0.2824, 0.4706, 0.6274
CMYK	0.00, 0.26, 0.48, 0.28
HSL	27°, 38%, 55%
HSV	27°, 48%, 72%
XYZ	30.2580, 28.2215, 14.6790
YIQ	144.7920, 41.4480, -2.2640

Conversions

Conversions Part 2

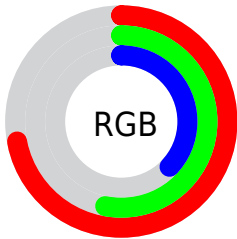
Format	Color
R_{YB}	183, 168, 95
Decimal	12027743
CIE _{Lab}	60.09, 13.44, 28.64
CIE _{LCh}	60, 31.631, 64.864
Yxy	28.2229, 0.4136, 0.3858
Android (android.graphics.Color)	4290217823 (0xFFB7875F)
YUV	144.7920, -24.5475, 33.5084
Hunter-Lab	53.1239, 8.7022, 20.8039

Details

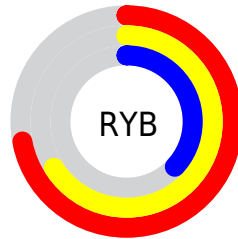
The HunterLab color $53.1239, 8.7022, 20.8039$ is a dark color, and the websafe version is hex $CC9966$. A complement of this color would be $50.4933, -6.7421, -21.6088$, and the grayscale version is $53.2130, -2.8393, 2.8912$.

A 20% lighter version of the original color is $75.3276, 9.0455, 25.1705$, and $33.6149, 8.5284, 15.9305$ is the 20% darker color. If you saturate the color by 10%, you get $50.2715, 12.1344, 22.9737$, and if you desaturate by 10%, it is $56.1363, 5.5785, 18.0939$.

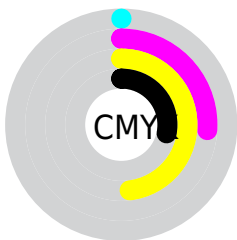
Distribution



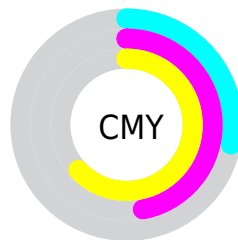
- Red (72%)
- Green (53%)
- Blue (37%)



- Red (72%)
- Yellow (66%)
- Blue (37%)



- Cyan (0%)
- Magenta (26%)
- Yellow (48%)
- Black (28%)




- Cyan (28%)
- Magenta (47%)
- Yellow (63%)

Brightness & Saturation Gradients


These gradients show how the HunterLab color 53.1239, 8.7022, 20.8039 changes by changing the brightness by 10 percent. The first figure shows a shift by +10% for each color and the second figure -10%.

Similar to the brightness gradients but the following saturation gradients show a change of the HunterLab color 53.1239, 8.7022, 20.8039 by changing the saturation by 10% instead.


 53.1239, 8.7022,
20.8039


 53.1239, 8.7022,
20.8039


171.3272, 7.5243,
39.2991


 43.0043, 8.5214,
18.4520

 75.3923, 8.8297,
25.2308


 33.6230, 8.2532,
15.9662


 87.4625, 8.7966,
27.3445

 25.0447, 7.8799,
13.3001


 100.1158, 8.7060,
29.4104

 17.3534, 7.3799,
10.7139

 113.3265, 8.5623,
31.4382

 10.6663, 6.7226,
7.4664

127.0721, 8.3692,
33.4354

 0.9956, 58.7516,
0.6969

141.3324, 8.1301,

0.0000, NaN, NaN

35.4082

0.0000, NaN, NaN

156.0895, 7.8477,
37.3615

0.0000, NaN, NaN

■ 53.1239, 8.7022,
20.8039

■ 53.1239, 8.7022,
20.8039

■ 50.2715, 12.1344,
22.9737

■ 56.1363, 5.5785,
18.0939

■ 47.5901, 15.8807,
24.5487

■ 59.2908, 2.7613,
14.8962

■ 45.0965, 19.9209,
25.4858

■ 62.5760, 0.2324,
11.2635

■ 42.8059, 24.2136,
25.7632

■ 65.9804, -2.0272,
7.2435

■ 40.7281, 28.6696,
25.4520

■ 69.4938, -4.0383,
2.8788

■ 40.3522, 29.5165,
25.3815

■ 73.1072, -5.8213,
-1.7932

■ 76.8125, -7.3963,
-6.7398

■ 80.6027, -8.7819,
-11.9328

■ 84.2898, -11.0035,
-14.8014

Harmonies

Analogous

The Analogous color harmony consists of three colors that are next to each other on the color wheel.



53.1252, 20.2981, 15.2078



53.1239, 8.7022, 20.8039



53.1252, -5.0306, 22.1471

Triad

The Triadic color harmony groups three colors that are evenly spaced from another and form a triangle on the color wheel.



53.1252, 8.6998, 20.8046



53.1252, -26.4048, 0.7450



53.1252, 12.9066, -21.7557

Complementary

The Complementary color scheme is a pair of colors which are on the opposite of each other on the color wheel.



53.1239, 8.7022, 20.8039



50.4933, -6.7421, -21.6088

Split Complementary

Split-complementary colors differ from the complementary color scheme. The scheme consists of three colors, the original color and two neighbors of the complement color.



53.1252, -0.6082, -28.2405



53.1239, 8.7022, 20.8039



53.1252, -22.5864, -13.3333

Square

The Square scheme is like the rectangle color scheme, but the four colors are evenly spaced on the color wheel.



53.1252, 8.6998, 20.8046



53.1252, -24.4449, 12.3869



53.1252, -13.4672, -24.8255



53.1252, 22.8926, -8.7619

Rectangle

The Rectangle color scheme consists of four colors that form a rectangle on the color wheel.



53.1239, 8.7022, 20.8039



53.1252, -13.3638, 20.8350



53.1252, -13.4672, -24.8255



53.1252, 8.5782, -24.8995

Sweetspot

The Sweet Spot groups the original color and five complimentary colors.



53.1252, 8.6998, 20.8046



85.4824, -0.8960, 13.0577



44.9970, 34.7456, -6.1159



39.7161, -0.1072, 6.6705



96.5975, -5.1542, 5.2483



43.2801, -2.3093, 2.3515

Same Dimension

The Same Dimension uses a secret algorithm to generate beautiful new colors.



53.1252, 8.6998, 20.8046



66.9549, 16.6598, 30.9616



65.5542, -12.2448, 30.3876



31.0912, -0.8340, 3.6841



33.9014, 24.1711, 21.3130



7.2740, 2.5100, 4.5262

Inverse Universe

The Inverse Universe completely reimagines the original color for something new.



50.4933, -6.7421, -21.6088



62.7080, -7.9011, -37.3602



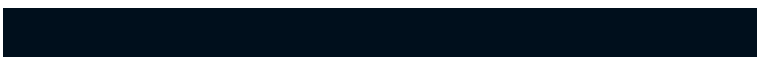
38.5380, 14.8499, -44.9165



30.8372, -2.3548, -0.4190



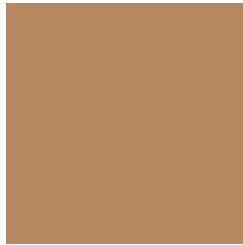
29.7600, 3.0921, -43.8724



6.5896, -1.0954, -5.8717

Previews

White Background



This preview shows how the HunterLab color 53.1239, 8.7022, 20.8039 looks on a white background.

Color Contrast Check

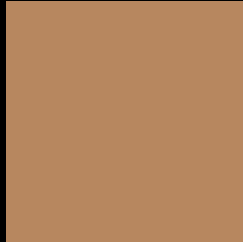
Large Text (above 18pt) WCAG AA ✓ Pass

Any Text WCAG AA × Fail

Large Text (above 18pt) WCAG AAA × Fail

Any Text WCAG AAA × Fail

Black Background



This preview shows how the HunterLab color 53.1239, 8.7022, 20.8039 looks on a black background.

Color Contrast Check

Large Text (above 18pt) WCAG AA ✓ Pass

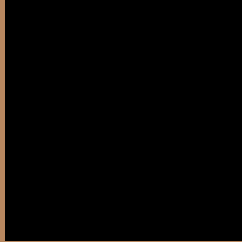
Any Text WCAG AA ✓ Pass

Large Text (above 18pt) WCAG AAA ✓ Pass

Any Text WCAG AAA × Fail

If you want to check with other color combinations, try the [Color Contrast Checker](#).

HunterLab 53.1239, 8.7022, 20.8039 Background



This preview shows how black text looks on a background with the HunterLab color 53.1239, 8.7022, 20.8039.



This preview shows how white text looks on a background with the HunterLab color 53.1239, 8.7022,

Color Blindness Simulation

Color vision deficiency is a very complex topic, and I could not describe the different causes any better than Wikipedia does, so if you want to learn more, you should check out their [article about color blindness](#).

Dichromacy



Original Color

53.1239, 8.7022, 20.8039

Protanopia

53.2163, -4.9720, 19.5530

Deuteranopia

53.2798, 3.6902, 21.1111



Tritanopia

53.0371, 18.2620, 5.6951

Trichromacy



Original Color

53.1239, 8.7022, 20.8039

Protanomaly

52.9515, -0.1127, 19.6880

Deuteranomaly

53.3386, 5.2765, 21.1881

Tritanomaly

53.0111, 14.7834, 11.9656

Monochromacy



Original Color

53.1239, 8.7022, 20.8039

Achromatopsia

53.2117, -2.8392, 2.8911

Achromatomaly

52.8706, 0.8401, 10.0767

CSS Examples

Text

The CSS property to change the color of the text to HunterLab 53.1239, 8.7022, 20.8039 is called "color". The color property can be set on classes, ids or directly on the HTML element.

This example shows how text in the color `rgb(183, 135, 95)` looks like.

```
.text, #text, p{  
    color:rgb(183, 135, 95)  
}
```

If you want to add a text shadow in that color use the text-shadow property, you can generate a text shadow directly with our [CSS Text Shadow Generator](#).

Here you see how black text with a 4 pixel rgb(183, 135, 95) colored shadow looks like.

```
.shadow{ text-shadow: 4px 4px 2px rgb(183, 135, 95) }
```

Border

The CSS property to change the border of an element to HunterLab 53.1239, 8.7022, 20.8039 is called "border". The border property can be set on classes, ids or directly on the HTML element.

This example shows the color as border, it can be applied via the CSS property "border" or "border-color".

```
.border, #border, table{ border:4px solid rgb(183, 135, 95) }
```


If only the border color should be changed use the property `border-color`.

```
.border{ border-color:rgb(183, 135, 95) }
```

If you want to add a box shadow in that color use:

Here you see how a box with a 4 pixel `rgb(183, 135, 95)` colored shadow looks like.

```
.boxshadow{ -moz-box-shadow:4px 4px 4px  
4px rgb(183, 135, 95); -webkit-box-  
shadow:4px 4px 4px 4px rgb(183, 135, 95);  
box-shadow:4px 4px 4px 4px rgb(183, 135,  
95) }
```

Background

The CSS property to change the background color of an element to HunterLab 53.1239, 8.7022, 20.8039 is called "background". The background property can be set on classes, ids or directly on the HTML element.

```
.background, #background, body{  
background: rgb(183, 135, 95) }
```

If only the background color should be changed can be used:

```
.background{ background-color: rgb(183,  
135, 95) }
```

This example shows the color as background, it is applied via the CSS property "background".

To optimize and compress your CSS code, you can use our [online CSS compressor and optimizer](#) based on csstidy. If you want to create a linear or radial gradient as background or border, check our [CSS Gradient Generator](#).

Hey! You found this booklet interesting? Support Converting Colors with the new Membership Option!

The pro membership hides all ads, plus gives you double the colors in the color bucket, and more awesome pro features!

[Learn more, Memberships starting at \\$2.50/m!](#)

**Follow me
on Twitter!**

@ConvertingColor