

Converting Colors

HunterLab(53.1457, 9.9831,
21.8811)

Have a look what the booklet for
HunterLab(53.1457, 9.9831,
21.8811) contains.

HunterLab(53.1457, 9.9831, 21.8811)	3
<i>Conversions</i>	4
<i>Details</i>	6
<i>Harmonies</i>	12
<i>Previews</i>	24
<i>Color Blindness Simulation</i>	28
<i>CSS Examples</i>	31

Color

**HunterLab(53.1457, 9.9831,
21.8811)**

Conversions

Conversions Part 1

Format	Color
Hex	BA865B
RGB	186, 134, 91
RGB Percent	73%, 53%, 36%
CMY	0.2706, 0.4745, 0.6431
CMYK	0.00, 0.28, 0.51, 0.27
HSL	27°, 41%, 54%
HSV	27°, 51%, 73%
XYZ	30.6632, 28.2447, 13.7332
YIQ	144.6460, 44.7950, -2.3490

Conversions

Conversions Part 2

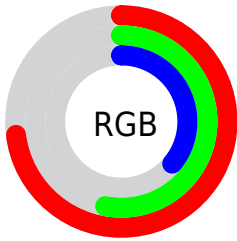
Format	Color
R_{YB}	186, 170, 91
Decimal	12224091
CIE Lab	60.11, 14.86, 30.92
CIE LCh	60, 34.310, 64.329
Yxy	28.2460, 0.4221, 0.3888
Android (android.graphics.Color)	4290414171 (0xFFBA865B)
YUV	144.6460, -26.4475, 36.2675
Hunter-Lab	53.1457, 9.9831, 21.8811

Details

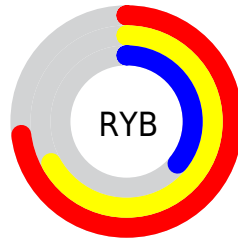
The HunterLab color **53.1457, 9.9831, 21.8811** is a dark color, and the websafe version is hex **CC9966**. A complement of this color would be **50.4115, -6.7827, -23.6913**, and the grayscale version is **53.1608, -2.8365, 2.8883**.

A 20% lighter version of the original color is **75.3172, 10.3013, 26.4449**, and **33.5683, 9.4837, 16.6419** is the 20% darker color. If you saturate the color by 10%, you get **50.2829, 13.5973, 23.9118**, and if you desaturate by 10%, it is **56.1773, 6.6845, 19.2838**.

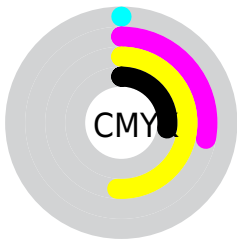
Distribution



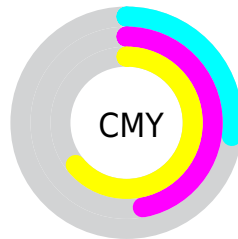
- Red (73%)
- Green (53%)
- Blue (36%)



- Red (73%)
- Yellow (67%)
- Blue (36%)



- Cyan (0%)
- Magenta (28%)
- Yellow (51%)
- Black (27%)




- Cyan (27%)
- Magenta (47%)
- Yellow (64%)

Brightness & Saturation Gradients

These gradients show how the HunterLab color 53.1457, 9.9831, 21.8811 changes by changing the brightness by 10 percent. The first figure shows a shift by +10% for each color and the second figure -10%.

Similar to the brightness gradients but the following saturation gradients show a change of the HunterLab color 53.1457, 9.9831, 21.8811 by changing the saturation by 10% instead.

 53.1457, 9.9831,
21.8811


 53.1457, 9.9831,
21.8811


171.3595, 9.3315,
41.4314


 43.0247, 9.7303,
19.3698

 75.4168, 10.2440,
26.5920

 33.6417, 9.3860,
16.7098


 87.4883, 10.2733,
28.8340

 25.0617, 8.9318,
13.8523


 100.1427, 10.2426,
31.0206

 17.3684, 8.3458,
11.2631

 113.3546, 10.1566,
33.1628

 10.6790, 7.5976,
7.4753

127.1012, 10.0194,
35.2688

 1.1054, 58.5342,
0.7738

141.3626, 9.8342,

0.0000, NaN, NaN

37.3455

0.0000, NaN, NaN

156.1208, 9.6041,
39.3982

0.0000, NaN, NaN

■ 53.1457, 9.9831,
21.8811

■ 53.1457, 9.9831,
21.8811

■ 50.2829, 13.5973,
23.9118

■ 56.1773, 6.6845,
19.2838

■ 47.6006, 17.5283,
25.3214

■ 59.3590, 3.7023,
16.1737

■ 45.1163, 21.7483,
26.0709

■ 62.6786, 1.0198,
12.6059

■ 42.8451, 26.2053,
26.1483

■ 66.1239, -1.3818,
8.6307

■ 41.0006, 30.2770,
25.7944

■ 69.6839, -3.5234,
4.2931

■ 73.3490, -5.4262,
-0.3670

■ 77.1106, -7.1109,
-5.3150

■ 80.9612, -8.5970,
-10.5209

■ 84.7638, -10.6253,
-14.1305

Harmonies

Analogous

The Analogous color harmony consists of three colors that are next to each other on the color wheel.



53.1470, 22.6001, 15.9420



53.1457, 9.9831, 21.8811



53.1470, -4.9573, 23.3399

Triad

The Triadic color harmony groups three colors that are evenly spaced from another and form a triangle on the color wheel.



53.1470, 9.9806, 21.8818



53.1470, -28.2090, 0.8212



53.1470, 14.0752, -24.4755

Complementary

The Complementary color scheme is a pair of colors which are on the opposite of each other on the color wheel.



53.1457, 9.9831, 21.8811



50.4115, -6.7827, -23.6913

Split Complementary

Split-complementary colors differ from the complementary color scheme. The scheme consists of three colors, the original color and two neighbors of the complement color.



53.1470, -0.6863, -31.5468



53.1457, 9.9831, 21.8811



53.1470, -24.2418, -14.6318

Square

The Square scheme is like the rectangle color scheme, but the four colors are evenly spaced on the color wheel.



53.1470, 9.9806, 21.8818



53.1470, -26.0089, 13.2807



53.1470, -14.5474, -27.5278



53.1470, 25.1387, -10.1359

Rectangle

The Rectangle color scheme consists of four colors that form a rectangle on the color wheel.



53.1457, 9.9831, 21.8811



53.1470, -13.9987, 22.0369



53.1470, -14.5474, -27.5278



53.1470, 9.3258, -27.9354

Sweetspot

The Sweet Spot groups the original color and five complimentary colors.



53.1470, 9.9806, 21.8818



87.0680, -0.5550, 13.9160



44.6232, 37.7854, -6.5022



40.3977, 0.0618, 7.0617



97.7295, -5.2146, 5.3098



44.2712, -2.3622, 2.4053

Same Dimension

The Same Dimension uses a secret algorithm to generate beautiful new colors.



53.1470, 9.9806, 21.8818



67.3482, 18.7835, 32.4067



66.5912, -12.7637, 31.9971



31.0867, -0.8262, 3.6791



33.8458, 24.3061, 21.2812



7.2647, 2.5292, 4.5208

Inverse Universe

The Inverse Universe completely reimagines the original color for something new.



50.4115, -6.7827, -23.6913



62.9522, -7.7223, -40.6473



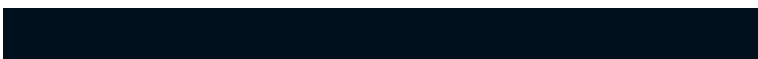
37.5364, 16.7585, -49.9529



30.8418, -2.3625, -0.4134



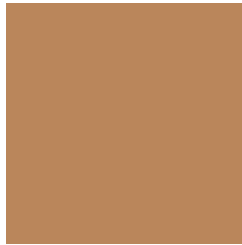
29.8388, 2.9491, -43.6621



6.6013, -1.1135, -5.8473

Previews

White Background



This preview shows how the HunterLab color 53.1457, 9.9831, 21.8811 looks on a white background.

Color Contrast Check

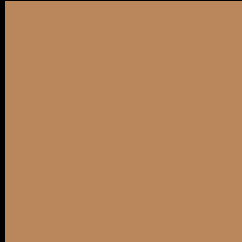
Large Text (above 18pt) WCAG AA ✓ Pass

Any Text WCAG AA × Fail

Large Text (above 18pt) WCAG AAA × Fail

Any Text WCAG AAA × Fail

Black Background



This preview shows how the HunterLab color 53.1457, 9.9831, 21.8811 looks on a black background.

Color Contrast Check

Large Text (above 18pt) WCAG AA ✓ Pass

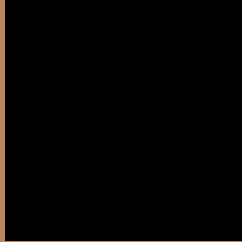
Any Text WCAG AA ✓ Pass

Large Text (above 18pt) WCAG AAA ✓ Pass

Any Text WCAG AAA × Fail

If you want to check with other color combinations, try the [Color Contrast Checker](#).

HunterLab 53.1457, 9.9831, 21.8811 Background



This preview shows how black text looks on a background with the HunterLab color 53.1457, 9.9831, 21.8811.



This preview shows how white text looks on a background with the HunterLab color 53.1457, 9.9831,

Color Blindness Simulation

Color vision deficiency is a very complex topic, and I could not describe the different causes any better than Wikipedia does, so if you want to learn more, you should check out their [article about color blindness](#).

Dichromacy



Original Color

53.1457, 9.9831, 21.8811

Protanopia

53.2411, -5.0250, 20.6624

Deuteranopia

53.3231, 3.7043, 22.1670



Tritanopia

53.1229, 19.7397, 6.2436

Trichromacy



Original Color

53.1457, 9.9831, 21.8811

Protanomaly

53.0874, 0.2138, 20.8890

Deuteranomaly

53.2286, 6.1578, 22.1326

Tritanomaly

53.0703, 16.1708, 12.7756

Monochromacy



Original Color

53.1457, 9.9831, 21.8811

Achromatopsia

53.2117, -2.8392, 2.8911

Achromatomaly

52.9188, 0.9068, 10.8862

CSS Examples

Text

The CSS property to change the color of the text to HunterLab 53.1457, 9.9831, 21.8811 is called "color". The color property can be set on classes, ids or directly on the HTML element.

This example shows how text in the color `rgb(186, 134, 91)` looks like.

```
.text, #text, p{  
    color:rgb(186, 134, 91)  
}
```

If you want to add a text shadow in that color use the text-shadow property, you can generate a text shadow directly with our [CSS Text Shadow Generator](#).

Here you see how black text with a 4 pixel rgb(186, 134, 91) colored shadow looks like.

```
.shadow{ text-shadow: 4px 4px 2px rgb(186, 134, 91) }
```

Border

The CSS property to change the border of an element to HunterLab 53.1457, 9.9831, 21.8811 is called "border". The border property can be set on classes, ids or directly on the HTML element.

This example shows the color as border, it can be applied via the CSS property "border" or "border-color".

```
.border, #border, table{ border:4px solid rgb(186, 134, 91) }
```


If only the border color should be changed use the property `border-color`.

```
.border{ border-color:rgb(186, 134, 91) }
```

If you want to add a box shadow in that color use:

Here you see how a box with a 4 pixel `rgb(186, 134, 91)` colored shadow looks like.

```
.boxshadow{ -moz-box-shadow:4px 4px 4px  
4px rgb(186, 134, 91); -webkit-box-  
shadow:4px 4px 4px 4px rgb(186, 134, 91);  
box-shadow:4px 4px 4px 4px rgb(186, 134,  
91) }
```

Background

The CSS property to change the background color of an element to HunterLab 53.1457, 9.9831, 21.8811 is called "background". The background property can be set on classes, ids or directly on the HTML element.

```
.background, #background, body{  
background: rgb(186, 134, 91) }
```

If only the background color should be changed can be used:

```
.background{ background-color: rgb(186,  
134, 91) }
```

This example shows the color as background, it is applied via the CSS property "background".

To optimize and compress your CSS code, you can use our [online CSS compressor and optimizer](#) based on csstidy. If you want to create a linear or radial gradient as background or border, check our [CSS Gradient Generator](#).

Hey! You found this booklet interesting? Support Converting Colors with the new Membership Option!

The pro membership hides all ads, plus gives you double the colors in the color bucket, and more awesome pro features!

[Learn more, Memberships starting at \\$2.50/m!](#)

**Follow me
on Twitter!**

@ConvertingColor