

Converting Colors

HunterLab(53.1605, 2.5215,
13.8103)

Have a look what the booklet for
HunterLab(53.1605, 2.5215,
13.8103) contains.

HunterLab(53.0765, 2.5398, 13.6040)	3
<i>Conversions</i>	4
<i>Details</i>	6
<i>Harmonies</i>	12
<i>Previews</i>	24
<i>Color Blindness Simulation</i>	28
<i>CSS Examples</i>	31

Color

**HunterLab(53.0765, 2.5398,
13.6040)**

Conversions

Conversions Part 1

Format	Color
Hex	A68C76
RGB	166, 140, 118
RGB Percent	65%, 55%, 46%
CMY	0.3490, 0.4510, 0.5373
CMYK	0.00, 0.16, 0.29, 0.35
HSL	28°, 21%, 56%
HSV	28°, 29%, 65%
XYZ	28.3740, 28.1711, 21.0816
YIQ	145.2660, 22.5580, -1.3300

Conversions

Conversions Part 2

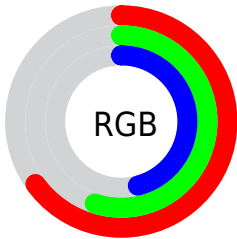
Format	Color
RYB	166, 159, 118
Decimal	10914934
CIELab	60.04, 6.39, 15.41
CIELCh	60, 16.681, 67.463
Yxy	28.1724, 0.3655, 0.3629
Android (android.graphics.Color)	4289105014 (0xFFA68C76)
YUV	145.2660, -13.4421, 18.1837
Hunter-Lab	53.0765, 2.5398, 13.6040

Details

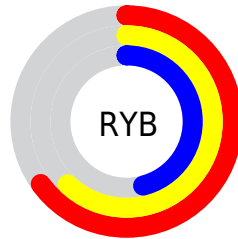
The HunterLab color $53.0765, 2.5398, 13.6040$ is a dark color, and the websafe version is hex $CC9999$. A complement of this color would be $51.5271, -5.8985, -9.8642$, and the grayscale version is $53.3654, -2.8474, 2.8994$.

A 20% lighter version of the original color is $75.5086, 1.8302, 16.6984$, and $33.5637, 2.8046, 10.4952$ is the 20% darker color. If you saturate the color by 10%, you get $50.2899, 5.0326, 16.4395$, and if you desaturate by 10%, it is $55.9806, 0.2993, 10.3792$.

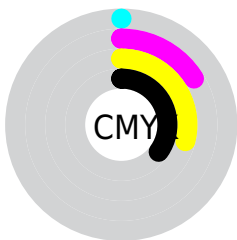
Distribution



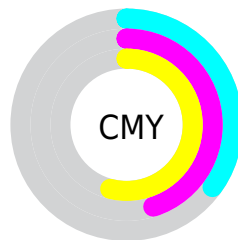
- Red (65%)
- Green (55%)
- Blue (46%)



- Red (65%)
- Yellow (62%)
- Blue (46%)



- Cyan (0%)
- Magenta (16%)
- Yellow (29%)
- Black (35%)



- Cyan (35%)
- Magenta (45%)
- Yellow (54%)

Brightness & Saturation Gradients

These gradients show how the HunterLab color 53.0765, 2.5398, 13.6040 changes by changing the brightness by 10 percent. The first figure shows a shift by +10% for each color and the second figure -10%.

Similar to the brightness gradients but the following saturation gradients show a change of the HunterLab color 53.0765, 2.5398, 13.6040 by changing the saturation by 10% instead.

■ 53.0765, 2.5398,
13.6040

■ 53.0765, 2.5398,
13.6040

171.2571, -1.2908,
26.2281

■ 42.9601, 2.7273,
12.1412

■ 75.3390, 1.9900,
16.4523

■ 33.5822, 2.8508,
10.6324

■ 87.4064, 1.6416,
17.8540

■ 25.0078, 2.8981,
9.0545

■ 100.0572, 1.2488,
19.2488

■ 17.3207, 2.8541,
7.3678

113.2654, 0.8146,
20.6405

■ 10.6385, 2.6946,
6.7024

127.0086, 0.3415,
22.0321

■ 0.6996, 39.7839,
0.4897

141.2666, -0.1683,

0.0000, NaN, NaN

23.4262

0.0000, NaN, NaN

156.0215, -0.7129,
24.8243

0.0000, NaN, NaN

■ 53.0765, 2.5398,
13.6040

■ 53.0765, 2.5398,
13.6040

■ 50.2899, 5.0326,
16.4395

■ 55.9806, 0.2993,
10.3792

■ 47.6283, 7.7969,
18.8377

■ 58.9886, -1.6999,
6.8049

■ 45.1048, 10.8385,
20.7520

■ 62.0929, -3.4776,
2.9196

■ 42.7323, 14.1561,
22.1368

■ 65.2855, -5.0519,
-1.2433

■ 40.5242, 17.7339,
22.9548

■ 68.5594, -6.4404,
-5.6547

■ 38.4934, 21.5362,
23.1883

■ 71.9083, -7.6593,
-10.2894

■ 36.6451, 25.4721,
22.9428

■ 75.3269, -8.7240,
-15.1256

■ 36.4542, 25.8952,
22.9163

■ 78.8102, -9.6485,
-20.1442

■ 81.8516, -13.2424,
-18.3253

Harmonies

Analogous

The Analogous color harmony consists of three colors that are next to each other on the color wheel.



53.0777, 8.5244, 10.2442



53.0765, 2.5398, 13.6040



53.0777, -4.6088, 14.2896

Triad

The Triadic color harmony groups three colors that are evenly spaced from another and form a triangle on the color wheel.



53.0777, 2.5379, 13.6047



53.0777, -15.7903, 1.1623



53.0777, 5.7888, -8.5752

Complementary

The Complementary color scheme is a pair of colors which are on the opposite of each other on the color wheel.



53.0765, 2.5398, 13.6040



51.5271, -5.8985, -9.8642

Split Complementary

Split-complementary colors differ from the complementary color scheme. The scheme consists of three colors, the original color and two neighbors of the complement color.



53.0777, -1.0375, -11.7829



53.0765, 2.5398, 13.6040



53.0777, -13.3126, -5.6970

Square

The Square scheme is like the rectangle color scheme, but the four colors are evenly spaced on the color wheel.



53.0777, 2.5379, 13.6047



53.0777, -14.9456, 7.6614



53.0777, -8.0023, -10.6653



53.0777, 10.4695, -2.3719

Rectangle

The Rectangle color scheme consists of four colors that form a rectangle on the color wheel.



53.0765, 2.5398, 13.6040



53.0777, -9.0275, 13.2329



53.0777, -8.0023, -10.6653



53.0777, 3.6553, -10.0746

Sweetspot

The Sweet Spot groups the original color and five complimentary colors.



53.0777, 2.5379, 13.6047



79.3646, -2.2259, 9.2941



48.0521, 17.2064, -2.8441



37.2701, -0.8817, 4.7295



92.0917, -4.9138, 5.0035



39.3538, -2.0998, 2.1382

Same Dimension

The Same Dimension uses a secret algorithm to generate beautiful new colors.



53.0777, 2.5379, 13.6047



68.9580, 5.6434, 20.9617



59.8524, -8.7104, 19.7495



28.4389, -0.7864, 3.3557



32.2436, 22.4594, 20.2615



5.9662, 1.4726, 3.7021

Inverse Universe

The Inverse Universe completely reimagines the original color for something new.



51.5271, -5.8985, -9.8642



66.4040, -8.1997, -17.6865



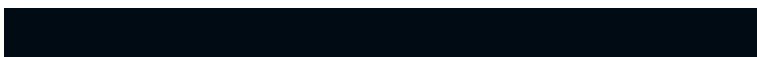
44.8714, 5.4877, -19.9235



28.1928, -2.1324, -0.3689



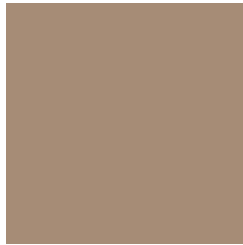
28.0841, 3.0570, -41.7019



5.4074, -1.2075, -4.1521

Previews

White Background



This preview shows how the HunterLab color 53.0765, 2.5398, 13.6040 looks on a white background.

Color Contrast Check

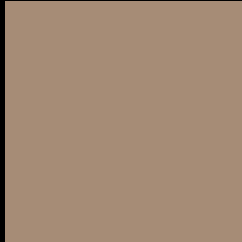
Large Text (above 18pt) WCAG AA ✓ Pass

Any Text WCAG AA × Fail

Large Text (above 18pt) WCAG AAA × Fail

Any Text WCAG AAA × Fail

Black Background



This preview shows how the HunterLab color 53.0765, 2.5398, 13.6040 looks on a black background.

Color Contrast Check

Large Text (above 18pt) WCAG AA ✓ Pass

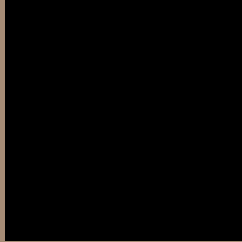
Any Text WCAG AA ✓ Pass

Large Text (above 18pt) WCAG AAA ✓ Pass

Any Text WCAG AAA × Fail

If you want to check with other color combinations, try the [Color Contrast Checker](#).

HunterLab 53.0765, 2.5398, 13.6040 Background



This preview shows how black text looks on a background with the HunterLab color 53.0765, 2.5398, 13.6040.



This preview shows how white text looks on a background with the HunterLab color 53.0765, 2.5398,

13.6040.

Color Blindness Simulation

Color vision deficiency is a very complex topic, and I could not describe the different causes any better than Wikipedia does, so if you want to learn more, you should check out their [article about color blindness](#).

Dichromacy



Original Color

53.0765, 2.5398, 13.6040

Protanopia

53.2721, -3.9213, 12.9808

Deuteranopia

53.0076, 3.7175, 13.5572



Tritanopia

53.0565, 9.5374, 2.0133

Trichromacy



Original Color

53.0765, 2.5398, 13.6040

Protanomaly

53.1469, -1.4755, 13.2530

Deuteranomaly

52.9044, 3.3708, 13.4501

Tritanomaly

52.9091, 7.0619, 6.6243

Monochromacy



Original Color

53.0765, 2.5398, 13.6040

Achromatopsia

53.2117, -2.8392, 2.8911

Achromatomaly

53.0721, -0.9475, 7.0790

CSS Examples

Text

The CSS property to change the color of the text to HunterLab 53.0765, 2.5398, 13.6040 is called "color". The color property can be set on classes, ids or directly on the HTML element.

This example shows how text in the color `rgb(166, 140, 118)` looks like.

```
.text, #text, p{  
    color:rgb(166, 140, 118)  
}
```

If you want to add a text shadow in that color use the text-shadow property, you can generate a text shadow directly with our [CSS Text Shadow Generator](#).

Here you see how black text with a 4 pixel rgb(166, 140, 118) colored shadow looks like.

```
.shadow{ text-shadow: 4px 4px 2px rgb(166, 140, 118) }
```

Border

The CSS property to change the border of an element to HunterLab 53.0765, 2.5398, 13.6040 is called "border". The border property can be set on classes, ids or directly on the HTML element.

This example shows the color as border, it can be applied via the CSS property "border" or "border-color".

```
.border, #border, table{ border:4px solid rgb(166, 140, 118) }
```


If only the border color should be changed use the property `border-color`.

```
.border{ border-color:rgb(166, 140, 118) }
```

If you want to add a box shadow in that color use:

Here you see how a box with a 4 pixel `rgb(166, 140, 118)` colored shadow looks like.

```
.boxshadow{ -moz-box-shadow:4px 4px 4px  
4px rgb(166, 140, 118); -webkit-box-  
shadow:4px 4px 4px 4px rgb(166, 140, 118);  
box-shadow:4px 4px 4px 4px rgb(166, 140,  
118) }
```

Background

The CSS property to change the background color of an element to HunterLab 53.0765, 2.5398, 13.6040 is called "background". The background property can be set on classes, ids or directly on the HTML element.

```
.background, #background, body{  
background: rgb(166, 140, 118) }
```

If only the background color should be changed can be used:

```
.background{ background-color: rgb(166,  
140, 118) }
```

This example shows the color as background, it is applied via the CSS property "background".

To optimize and compress your CSS code, you can use our [online CSS compressor and optimizer](#) based on csstidy. If you want to create a linear or radial gradient as background or border, check our [CSS Gradient Generator](#).

Hey! You found this booklet interesting? Support Converting Colors with the new Membership Option!

The pro membership hides all ads, plus gives you double the colors in the color bucket, and more awesome pro features!

[Learn more, Memberships starting at \\$2.50/m!](#)

**Follow me
on Twitter!**

@ConvertingColor