

Converting Colors

HunterLab(53.1714, 10.0964,
10.6346)

Have a look what the booklet for
HunterLab(53.1714, 10.0964,
10.6346) contains.

HunterLab(53.1106, 9.9884, 10.4866)	3
<i>Conversions</i>	4
<i>Details</i>	6
<i>Harmonies</i>	12
<i>Previews</i>	24
<i>Color Blindness Simulation</i>	28
<i>CSS Examples</i>	31

Color

**HunterLab(53.1106, 9.9884,
10.4866)**

Conversions

Conversions Part 1

Format	Color
Hex	B1877F
RGB	177, 135, 127
RGB Percent	69%, 53%, 50%
CMY	0.3059, 0.4706, 0.5020
CMYK	0.00, 0.24, 0.28, 0.31
HSL	10°, 24%, 60%
HSV	10°, 28%, 69%
XYZ	30.6262, 28.2074, 23.9090
YIQ	146.6460, 27.6000, 6.4160

Conversions

Conversions Part 2

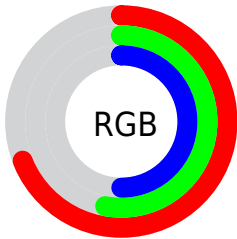
Format	Color
R_{YB}	177, 137, 127
Decimal	11634559
CIE _{Lab}	60.08, 14.87, 10.51
CIE _{LCh}	60, 18.207, 35.241
Yxy	28.2087, 0.3701, 0.3409
Android (android.graphics.Color)	4289824639 (0xFFB1877F)
YUV	146.6460, -9.6855, 26.6205
Hunter-Lab	53.1106, 9.9884, 10.4866

Details

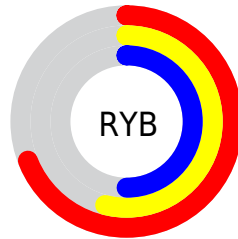
The HunterLab color $53.1106, 9.9884, 10.4866$ is a dark color, and the websafe version is hex $CC9999$. A complement of this color would be $60.0509, -13.3118, -4.2980$, and the grayscale version is $53.9042, -2.8762, 2.9287$.

A 20% lighter version of the original color is $75.2232, 10.3219, 12.4990$, and $33.5530, 9.3352, 8.1021$ is the 20% darker color. If you saturate the color by 10%, you get $48.9120, 15.2777, 12.7659$, and if you desaturate by 10%, it is $57.5794, 4.9642, 8.1075$.

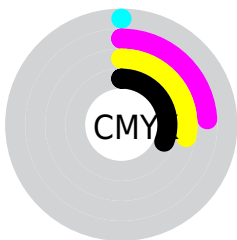
Distribution



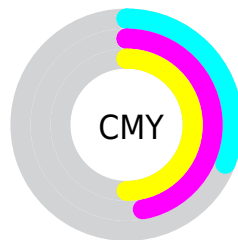
- Red (69%)
- Green (53%)
- Blue (50%)



- Red (69%)
- Yellow (54%)
- Blue (50%)



- Cyan (0%)
- Magenta (24%)
- Yellow (28%)
- Black (31%)



- Cyan (31%)
- Magenta (47%)
- Yellow (50%)

Brightness & Saturation Gradients

These gradients show how the HunterLab color 53.1106, 9.9884, 10.4866 changes by changing the brightness by 10 percent. The first figure shows a shift by +10% for each color and the second figure -10%.

Similar to the brightness gradients but the following saturation gradients show a change of the HunterLab color 53.1106, 9.9884, 10.4866 by changing the saturation by 10% instead.

■ 53.1106, 9.9884,
10.4866

■ 53.1106, 9.9884,
10.4866

171.3075, 9.3416,
21.0563

■ 42.9919, 9.7354,
9.3320

■ 75.3773, 10.2509,
12.7867

■ 33.6115, 9.3904,
8.1621

■ 87.4467, 10.2807,
13.9402

■ 25.0344, 8.9354,
6.9639

■ 100.0993, 10.2505,
15.1005

■ 17.3442, 8.3484,
5.7132

113.3094, 10.1650,
16.2693

■ 10.6585, 7.5992,
4.7899

127.0542, 10.0282,
17.4484

■ 0.9220, 70.2269,
0.6454

141.3139, 9.8435,

0.0000, NaN, NaN

18.6387

0.0000, NaN, NaN

156.0704, 9.6137,
19.8411

0.0000, NaN, NaN

■ 53.1106, 9.9884,
10.4866

■ 53.1106, 9.9884,
10.4866

■ 48.9120, 15.2777,
12.7659

■ 57.5794, 4.9642,
8.1075

■ 45.0237, 20.8190,
14.8945

■ 62.2783, 0.2045,
5.6588

■ 41.4981, 26.5453,
16.8045

■ 67.1786, -4.3129,
3.1625

■ 38.3927, 32.3218,
18.4056

■ 72.2558, -8.6136,
0.6324

■ 35.7670, 37.9228,
19.5930

■ 77.4895, -12.7238,
-1.9233

■ 33.6738, 43.0295,
20.2708

■ 82.8634, -16.6688,
-4.4993

■ 32.1413, 47.2544,
20.4684

■ 88.3634, -20.4711,
-7.0926

■ 31.9273, 47.8634,
20.5114

■ 93.4942, -26.9082,
-2.8566

■ 93.8548, -27.4220,
-2.4129

Harmonies

Analogous

The Analogous color harmony consists of three colors that are next to each other on the color wheel.



53.1118, 12.9517, 4.1787



53.1106, 9.9884, 10.4866



53.1118, 3.5966, 14.2910

Triad

The Triadic color harmony groups three colors that are evenly spaced from another and form a triangle on the color wheel.



53.1118, 9.9864, 10.4874



53.1118, -15.7909, 8.5299



53.1118, -1.4588, -13.3834

Complementary

The Complementary color scheme is a pair of colors which are on the opposite of each other on the color wheel.



53.1106, 9.9884, 10.4866



60.0509, -13.3118, -4.2980

Split Complementary

Split-complementary colors differ from the complementary color scheme. The scheme consists of three colors, the original color and two neighbors of the complement color.



53.1118, -8.9778, -11.7776



53.1106, 9.9884, 10.4866



53.1118, -16.9723, 1.5702

Square

The Square scheme is like the rectangle color scheme, but the four colors are evenly spaced on the color wheel.



53.1118, 9.9864, 10.4874



53.1118, -11.2230, 13.2804



53.1118, -14.5481, -6.0252



53.1118, 6.1044, -10.1425

Rectangle

The Rectangle color scheme consists of four colors that form a rectangle on the color wheel.



53.1106, 9.9884, 10.4866



53.1118, -1.5857, 15.2424



53.1118, -14.5481, -6.0252



53.1118, -4.0764, -13.3970

Sweetspot

The Sweet Spot groups the original color and five complimentary colors.



53.1118, 9.9864, 10.4874



83.4168, 0.2046, 7.5360



52.3541, 20.6527, -10.1665



38.3910, 0.5241, 3.7362



94.3401, -5.0338, 5.1257



41.3092, -2.2042, 2.2444

Same Dimension

The Same Dimension uses a secret algorithm to generate beautiful new colors.



53.1118, 9.9864, 10.4874



67.4736, 17.8075, 15.9853



59.8734, -2.0827, 16.9739



29.5258, 0.3374, 2.8327



27.2874, 40.3853, 17.5214



5.4927, 5.2603, 3.4767

Inverse Universe

The Inverse Universe completely reimagines the original color for something new.



60.0509, -13.3118, -4.2980



78.7020, -20.0667, -7.9763



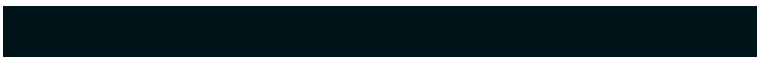
52.7115, -1.7017, -14.3356



30.6517, -3.4156, 0.4395



42.2745, -16.8281, -16.5124



7.9006, -3.5048, -2.3091

Previews

White Background



This preview shows how the HunterLab color 53.1106, 9.9884, 10.4866 looks on a white background.

Color Contrast Check

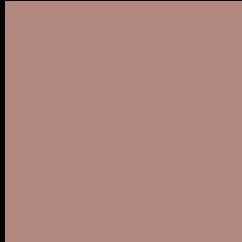
Large Text (above 18pt) WCAG AA ✓ Pass

Any Text WCAG AA × Fail

Large Text (above 18pt) WCAG AAA × Fail

Any Text WCAG AAA × Fail

Black Background



This preview shows how the HunterLab color 53.1106, 9.9884, 10.4866 looks on a black background.

Color Contrast Check

Large Text (above 18pt) WCAG AA ✓ Pass

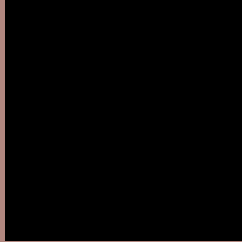
Any Text WCAG AA ✓ Pass

Large Text (above 18pt) WCAG AAA ✓ Pass

Any Text WCAG AAA × Fail

If you want to check with other color combinations, try the [Color Contrast Checker](#).

HunterLab 53.1106, 9.9884, 10.4866 Background



This preview shows how black text looks on a background with the HunterLab color 53.1106, 9.9884, 10.4866.



This preview shows how white text looks on a background with the HunterLab color 53.1106, 9.9884,

Color Blindness Simulation

Color vision deficiency is a very complex topic, and I could not describe the different causes any better than Wikipedia does, so if you want to learn more, you should check out their [article about color blindness](#).

Dichromacy



Original Color

53.1106, 9.9884, 10.4866

Protanopia

53.3817, -2.9578, 8.5958

Deuteranopia

53.2630, 3.5410, 10.9102



Tritanopia

53.2371, 13.9135, 4.1069

Trichromacy



Original Color

53.1106, 9.9884, 10.4866

Protanomaly

53.0425, 1.5748, 9.1055

Deuteranomaly

53.1313, 5.8998, 10.8159

Tritanomaly

53.2178, 12.1908, 6.6386

Monochromacy



Original Color

53.1106, 9.9884, 10.4866

Achromatopsia

54.0158, -2.8821, 2.9348

Achromatomaly

53.6726, 1.3769, 5.6892

CSS Examples

Text

The CSS property to change the color of the text to HunterLab 53.1106, 9.9884, 10.4866 is called "color". The color property can be set on classes, ids or directly on the HTML element.

This example shows how text in the color `rgb(177, 135, 127)` looks like.

```
.text, #text, p{  
    color:rgb(177, 135, 127)  
}
```

If you want to add a text shadow in that color use the text-shadow property, you can generate a text shadow directly with our [CSS Text Shadow Generator](#).

Here you see how black text with a 4 pixel rgb(177, 135, 127) colored shadow looks like.

```
.shadow{ text-shadow: 4px 4px 2px rgb(177, 135, 127) }
```

Border

The CSS property to change the border of an element to HunterLab 53.1106, 9.9884, 10.4866 is called "border". The border property can be set on classes, ids or directly on the HTML element.

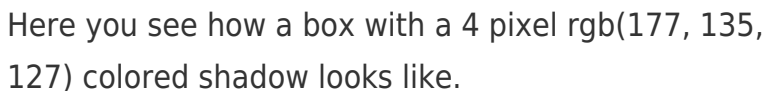
This example shows the color as border, it can be applied via the CSS property "border" or "border-color".

```
.border, #border, table{ border:4px solid rgb(177, 135, 127) }
```


If only the border color should be changed use the property `border-color`.

```
.border{ border-color:rgb(177, 135, 127) }
```

If you want to add a box shadow in that color use:



Here you see how a box with a 4 pixel `rgb(177, 135, 127)` colored shadow looks like.

```
.boxshadow{ -moz-box-shadow:4px 4px 4px 4px rgb(177, 135, 127); -webkit-box-shadow:4px 4px 4px 4px rgb(177, 135, 127); box-shadow:4px 4px 4px 4px rgb(177, 135, 127) }
```

Background

The CSS property to change the background color of an element to HunterLab 53.1106, 9.9884, 10.4866 is called "background". The background property can be set on classes, ids or directly on the HTML element.

```
.background, #background, body{  
background: rgb(177, 135, 127) }
```

If only the background color should be changed can be used:

```
.background{ background-color: rgb(177,  
135, 127) }
```

This example shows the color as background, it is applied via the CSS property "background".

To optimize and compress your CSS code, you can use our [online CSS compressor and optimizer](#) based on csstidy. If you want to create a linear or radial gradient as background or border, check our [CSS Gradient Generator](#).

Hey! You found this booklet interesting? Support Converting Colors with the new Membership Option!

The pro membership hides all ads, plus gives you double the colors in the color bucket, and more awesome pro features!

[Learn more, Memberships starting at \\$2.50/m!](#)

**Follow me
on Twitter!**

@ConvertingColor