

Converting Colors

HunterLab(53.1785, 10.5209,
7.3664)

Have a look what the booklet for
HunterLab(53.1785, 10.5209,
7.3664) contains.

HunterLab(53.2046, 10.7002, 7.4284)	3
<i>Conversions</i>	4
<i>Details</i>	6
<i>Harmonies</i>	12
<i>Previews</i>	24
<i>Color Blindness Simulation</i>	28
<i>CSS Examples</i>	31

Color

**HunterLab(53.2046, 10.7002,
7.4284)**

Conversions

Conversions Part 1

Format	Color
Hex	B08787
RGB	176, 135, 135
RGB Percent	69%, 53%, 53%
CMY	0.3098, 0.4706, 0.4706
CMYK	0.00, 0.23, 0.23, 0.31
HSL	0°, 21%, 61%
HSV	0°, 23%, 69%
XYZ	30.9416, 28.3073, 26.7547
YIQ	147.2590, 24.4360, 8.6920

Conversions

Conversions Part 2

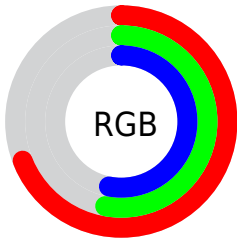
Format	Color
RYB	176, 135, 135
Decimal	11569031
CIELab	60.17, 15.66, 6.05
CIELCh	60, 16.785, 21.133
Yxy	28.3086, 0.3598, 0.3291
Android (android.graphics.Color)	4289759111 (0xFFB08787)
YUV	147.2590, -6.0437, 25.2059
Hunter-Lab	53.2046, 10.7002, 7.4284

Details

The HunterLab color $53.2046, 10.7002, 7.4284$ is a light color, and the websafe version is hex $CC9999$. A complement of this color would be $62.7176, -14.8301, -0.4430$, and the grayscale version is $54.1377, -2.8887, 2.9414$.

A 20% lighter version of the original color is $75.3346, 11.1334, 9.1717$, and $33.7103, 10.1431, 5.8339$ is the 20% darker color. If you saturate the color by 10%, you get $48.3128, 17.2324, 9.2664$, and if you desaturate by 10%, it is $58.4547, 4.4222, 5.7043$.

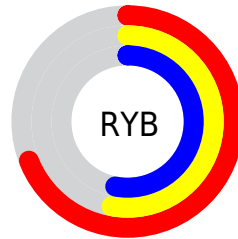
Distribution



Red (69%)

Green (53%)

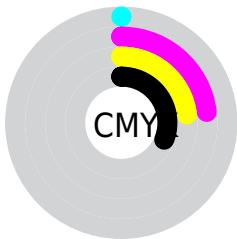
Blue (53%)



Red (69%)

Yellow (53%)

Blue (53%)

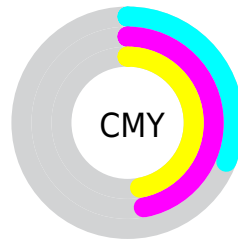


Cyan (0%)

Magenta (23%)

Yellow (23%)

Black (31%)



Cyan (31%)

Magenta (47%)

Yellow (47%)

Brightness & Saturation Gradients

These gradients show how the HunterLab color 53.2046, 10.7002, 7.4284 changes by changing the brightness by 10 percent. The first figure shows a shift by +10% for each color and the second figure -10%.

Similar to the brightness gradients but the following saturation gradients show a change of the HunterLab color 53.2046, 10.7002, 7.4284 by changing the saturation by 10% instead.

■ 53.2046, 10.7002,
7.4284

■ 53.2046, 10.7002,
7.4284

171.4464, 10.3378,
16.1991

■ 43.0795, 10.4087,
6.5402

■ 75.4830, 11.0346,
9.2521

■ 33.6922, 10.0231,
5.6622

■ 87.5577, 11.0981,
10.1890

■ 25.1075, 9.5251,
4.7897

■ 100.2154, 11.1002,
11.1440

■ 17.4090, 8.8929,
3.9125

113.4303, 11.0459,
12.1175

■ 10.7135, 8.0966,
3.0590

127.1799, 10.9393,
13.1097

■ 1.3578, 50.1743,
0.9504

141.4441, 10.7838,

0.0000, NaN, NaN

14.1207

0.0000, NaN, NaN

156.2050, 10.5824,
15.1505

0.0000, NaN, NaN

■ 53.2046, 10.7002,
7.4284

■ 53.2046, 10.7002,
7.4284

■ 48.3128, 17.2324,
9.2664

■ 58.4547, 4.4222,
5.7043

■ 43.8450, 23.9670,
11.2012

■ 64.0040, -1.5897,
4.0895

■ 39.8855, 30.7529,
13.1897

■ 69.8093, -7.3568,
2.5751

■ 36.5283, 37.3026,
15.1424

■ 75.8359, -12.9079,
1.1491

■ 33.8664, 43.1681,
16.9157

■ 82.0559, -18.2742,
-0.2011

■ 31.9687, 47.8028,
18.3315

■ 88.4469, -23.4850,
-1.4869

■ 30.8459, 50.7554,
19.2393

■ 93.7924, -27.6539,
-2.4951

■ 30.3817, 52.0268,
19.6319

Harmonies

Analogous

The Analogous color harmony consists of three colors that are next to each other on the color wheel.



53.2058, 11.5410, 0.8258



53.2046, 10.7002, 7.4284



53.2058, 6.1282, 12.1644

Triad

The Triadic color harmony groups three colors that are evenly spaced from another and form a triangle on the color wheel.



53.2058, 10.6982, 7.4293



53.2058, -13.1986, 10.5158



53.2058, -4.9591, -11.8300

Complementary

The Complementary color scheme is a pair of colors which are on the opposite of each other on the color wheel.



53.2046, 10.7002, 7.4284



62.7176, -14.8301, -0.4430

Split Complementary

Split-complementary colors differ from the complementary color scheme. The scheme consists of three colors, the original color and two neighbors of the complement color.



53.2058, -11.2542, -8.4133



53.2046, 10.7002, 7.4284



53.2058, -15.8425, 4.8865

Square

The Square scheme is like the rectangle color scheme, but the four colors are evenly spaced on the color wheel.



53.2058, 10.6982, 7.4293



53.2058, -7.7422, 13.7748



53.2058, -15.1501, -2.0747



53.2058, 2.2427, -10.9118

Rectangle

The Rectangle color scheme consists of four colors that form a rectangle on the color wheel.



53.2046, 10.7002, 7.4284



53.2058, 1.7098, 13.9127



53.2058, -15.1501, -2.0747



53.2058, -7.2454, -11.1354

Sweetspot

The Sweet Spot groups the original color and five complimentary colors.



53.2058, 10.6982, 7.4293



83.2916, 0.9171, 6.3229



54.4912, 17.3433, -10.8108



38.5738, 0.6425, 3.0013



94.3401, -5.0338, 5.1257



41.3092, -2.2042, 2.2444

Same Dimension

The Same Dimension uses a secret algorithm to generate beautiful new colors.



53.2058, 10.6982, 7.4293



68.1650, 18.9385, 11.2722



58.8125, 0.5213, 13.1410



29.1640, 0.9660, 2.4301



26.0242, 44.5644, 16.8162



4.6166, 7.9035, 2.9831

Inverse Universe

The Inverse Universe completely reimagines the original color for something new.



62.7176, -14.8301, -0.4430



83.6797, -22.8539, -1.6196



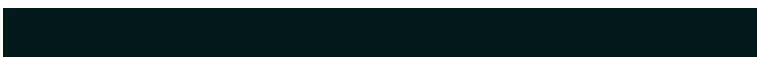
56.4759, -5.1730, -8.4115



31.0346, -4.0260, 0.8915



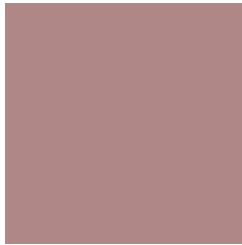
50.0781, -26.5462, -5.2876



8.8831, -4.7091, -0.9376

Previews

White Background



This preview shows how the HunterLab color 53.2046, 10.7002, 7.4284 looks on a white background.

Color Contrast Check

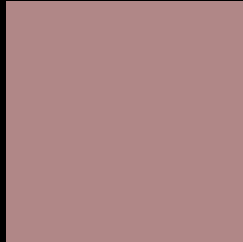
Large Text (above 18pt) WCAG AA ✓ Pass

Any Text WCAG AA × Fail

Large Text (above 18pt) WCAG AAA × Fail

Any Text WCAG AAA × Fail

Black Background



This preview shows how the HunterLab color 53.2046, 10.7002, 7.4284 looks on a black background.

Color Contrast Check

Large Text (above 18pt) WCAG AA ✓ Pass

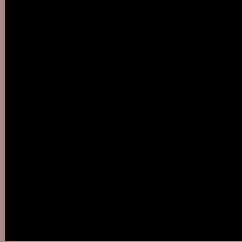
Any Text WCAG AA ✓ Pass

Large Text (above 18pt) WCAG AAA ✓ Pass

Any Text WCAG AAA × Fail

If you want to check with other color combinations, try the [Color Contrast Checker](#).

HunterLab 53.2046, 10.7002, 7.4284 Background



This preview shows how black text looks on a background with the HunterLab color 53.2046, 10.7002, 7.4284.



This preview shows how white text looks on a background with the HunterLab color 53.2046, 10.7002,

7.4284.

Color Blindness Simulation

Color vision deficiency is a very complex topic, and I could not describe the different causes any better than Wikipedia does, so if you want to learn more, you should check out their [article about color blindness](#).

Dichromacy



Original Color

53.2046, 10.7002, 7.4284

Protanopia

53.4170, -2.4089, 5.3344

Deuteranopia

53.1638, 3.6117, 7.6693



Tritanopia

53.3019, 12.8487, 3.7195

Trichromacy



Original Color

53.2046, 10.7002, 7.4284

Protanomaly

53.1561, 2.3801, 5.9768

Deuteranomaly

53.1253, 6.2844, 7.6742

Tritanomaly

53.2169, 12.4078, 4.9342

Monochromacy



Original Color

53.2046, 10.7002, 7.4284

Achromatopsia

54.0158, -2.8821, 2.9348

Achromatomaly

53.7561, 1.8275, 4.4945

CSS Examples

Text

The CSS property to change the color of the text to HunterLab 53.2046, 10.7002, 7.4284 is called "color". The color property can be set on classes, ids or directly on the HTML element.

This example shows how text in the color `rgb(176, 135, 135)` looks like.

```
.text, #text, p{  
    color:rgb(176, 135, 135)  
}
```

If you want to add a text shadow in that color use the text-shadow property, you can generate a text shadow directly with our [CSS Text Shadow Generator](#).

Here you see how black text with a 4 pixel rgb(176, 135, 135) colored shadow looks like.

```
.shadow{ text-shadow: 4px 4px 2px rgb(176, 135, 135) }
```

Border

The CSS property to change the border of an element to HunterLab 53.2046, 10.7002, 7.4284 is called "border". The border property can be set on classes, ids or directly on the HTML element.

This example shows the color as border, it can be applied via the CSS property "border" or "border-color".

```
.border, #border, table{ border:4px solid rgb(176, 135, 135) }
```


If only the border color should be changed use the property `border-color`.

```
.border{ border-color:rgb(176, 135, 135) }
```

If you want to add a box shadow in that color use:

Here you see how a box with a 4 pixel `rgb(176, 135, 135)` colored shadow looks like.

```
.boxshadow{ -moz-box-shadow:4px 4px 4px  
4px rgb(176, 135, 135); -webkit-box-  
shadow:4px 4px 4px 4px rgb(176, 135, 135);  
box-shadow:4px 4px 4px 4px rgb(176, 135,  
135) }
```

Background

The CSS property to change the background color of an element to HunterLab 53.2046, 10.7002, 7.4284 is called "background". The background property can be set on classes, ids or directly on the HTML element.

```
.background, #background, body{  
background: rgb(176, 135, 135) }
```

If only the background color should be changed can be used:

```
.background{ background-color: rgb(176,  
135, 135) }
```

This example shows the color as background, it is applied via the CSS property "background".

To optimize and compress your CSS code, you can use our [online CSS compressor and optimizer](#) based on csstidy. If you want to create a linear or radial gradient as background or border, check our [CSS Gradient Generator](#).

Hey! You found this booklet interesting? Support Converting Colors with the new Membership Option!

The pro membership hides all ads, plus gives you double the colors in the color bucket, and more awesome pro features!

[Learn more, Memberships starting at \\$2.50/m!](#)

**Follow me
on Twitter!**

@ConvertingColor