

Converting Colors

HunterLab(53.2659, 2.0104,
13.8416)

Have a look what the booklet for
HunterLab(53.2659, 2.0104,
13.8416) contains.

HunterLab(53.3524, 2.0548, 13.8644)	3
<i>Conversions</i>	4
<i>Details</i>	6
<i>Harmonies</i>	12
<i>Previews</i>	24
<i>Color Blindness Simulation</i>	28
<i>CSS Examples</i>	31

Color

**HunterLab(53.3524, 2.0548,
13.8644)**

Conversions

Conversions Part 1

Format	Color
Hex	A68D76
RGB	166, 141, 118
RGB Percent	65%, 55%, 46%
CMY	0.3490, 0.4470, 0.5372
CMYK	0.00, 0.15, 0.29, 0.35
HSL	29°, 21%, 56%
HSV	29°, 29%, 65%
XYZ	28.5208, 28.4648, 21.1306
YIQ	145.8530, 22.2830, -1.8530

Conversions

Conversions Part 2

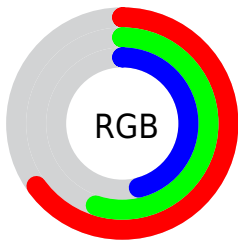
Format	Color
R_{YB}	166, 162, 118
Decimal	10915190
CIE _{Lab}	60.31, 5.83, 15.77
CIE _{LCh}	60, 16.815, 69.700
Yxy	28.4661, 0.3651, 0.3644
Android (android.graphics.Color)	4289105270 (0xFFA68D76)
YUV	145.8530, -13.7315, 17.6689
Hunter-Lab	53.3524, 2.0548, 13.8644

Details

The HunterLab color $53.3524, 2.0548, 13.8644$ is a dark color, and the websafe version is hex 999999 . A complement of this color would be $51.2337, -5.4276, -10.2744$, and the grayscale version is $53.6026, -2.8601, 2.9123$.

A 20% lighter version of the original color is $75.8038, 1.3178, 16.9876$, and $33.8158, 2.3530, 10.7190$ is the 20% darker color. If you saturate the color by 10%, you get $50.6505, 4.3807, 16.7543$, and if you desaturate by 10%, it is $56.1658, -0.0186, 10.5671$.

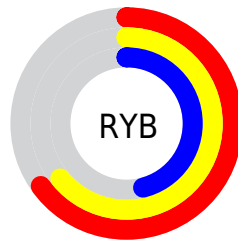
Distribution



Red (65%)

Green (55%)

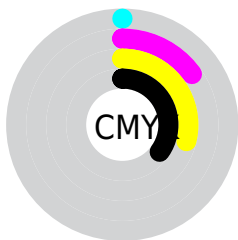
Blue (46%)



Red (65%)

Yellow (64%)

Blue (46%)

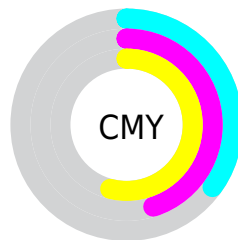


Cyan (0%)

Magenta (15%)

Yellow (29%)

Black (35%)



Cyan (35%)

Magenta (45%)

Yellow (54%)

Brightness & Saturation Gradients

These gradients show how the HunterLab color 53.3524, 2.0548, 13.8644 changes by changing the brightness by 10 percent. The first figure shows a shift by +10% for each color and the second figure -10%.

Similar to the brightness gradients but the following saturation gradients show a change of the HunterLab color 53.3524, 2.0548, 13.8644 by changing the saturation by 10% instead.

■ 53.3524, 2.0548,
13.8644

■ 53.3524, 2.0548,
13.8644

171.6646, -1.9999,
26.6428

■ 43.2172, 2.2740,
12.3792

■ 75.6490, 1.4471,
16.7533

■ 33.8191, 2.4315,
10.8461

■ 87.7322, 1.0720,
18.1735

■ 25.2226, 2.5158,
9.2416

■ 100.3979, 0.6537,
19.5859

■ 17.5109, 2.5126,
7.5254

113.6205, 0.1950,
20.9944

■ 10.8002, 2.3993,
6.7923

127.3775, -0.3016,
22.4021

■ 1.8451, 13.6795,
1.2916

141.6488, -0.8342,

0.0000, NaN, NaN

23.8116

0.0000, NaN, NaN

156.4166, -1.4008,
25.2247

0.0000, NaN, NaN

■ 53.3524, 2.0548,
13.8644

■ 53.3524, 2.0548,
13.8644

■ 50.6505, 4.3807,
16.7543

■ 56.1658, -0.0186,
10.5671

■ 48.0663, 6.9780,
19.1902

■ 59.0779, -1.8502,
6.9017

■ 45.6118, 9.8534,
21.1275

■ 62.0819, -3.4593,
2.9067

■ 43.2983, 13.0068,
22.5234

■ 65.1705, -4.8634,
-1.3840

■ 41.1374, 16.4260,
23.3443

■ 68.3372, -6.0796,
-5.9408

■ 39.1401, 20.0803,
23.5763

■ 71.5763, -7.1239,
-10.7376

■ 37.3103, 23.8875,
23.3264

■ 74.8825, -8.0112,
-15.7515

■ 37.1204, 24.2983,
23.2988

■ 78.2512, -8.7552,
-20.9628

■ 81.1720, -12.1829,
-19.2992

Harmonies

Analogous

The Analogous color harmony consists of three colors that are next to each other on the color wheel.



53.3536, 8.2578, 10.6702



53.3524, 2.0548, 13.8644



53.3536, -5.1687, 14.3509

Triad

The Triadic color harmony groups three colors that are evenly spaced from another and form a triangle on the color wheel.



53.3536, 2.0530, 13.8651



53.3536, -15.8564, 0.6308



53.3536, 6.3112, -8.2891

Complementary

The Complementary color scheme is a pair of colors which are on the opposite of each other on the color wheel.



53.3524, 2.0548, 13.8644



51.2337, -5.4276, -10.2744

Split Complementary

Split-complementary colors differ from the complementary color scheme. The scheme consists of three colors, the original color and two neighbors of the complement color.



53.3536, -0.4904, -11.8227



53.3524, 2.0548, 13.8644



53.3536, -13.1168, -6.2392

Square

The Square scheme is like the rectangle color scheme, but the four colors are evenly spaced on the color wheel.



53.3536, 2.0530, 13.8651



53.3536, -15.2562, 7.2860



53.3536, -7.5814, -11.0264



53.3536, 10.8055, -1.8840

Rectangle

The Rectangle color scheme consists of four colors that form a rectangle on the color wheel.



53.3524, 2.0548, 13.8644



53.3536, -9.5554, 13.1495



53.3536, -7.5814, -11.0264



53.3536, 4.2045, -9.8884

Sweetspot

The Sweet Spot groups the original color and five complimentary colors.



53.3536, 2.0530, 13.8651



79.4881, -2.4341, 9.4280



48.0267, 17.0772, -2.4836



37.3373, -0.9953, 4.8017



92.0917, -4.9138, 5.0035



39.3538, -2.0998, 2.1382

Same Dimension

The Same Dimension uses a secret algorithm to generate beautiful new colors.



53.3536, 2.0530, 13.8651



69.4074, 4.8386, 21.3646



60.0912, -9.0844, 19.9574



28.4838, -0.8621, 3.4043



32.8295, 21.0628, 20.5981



6.0430, 1.3230, 3.7469

Inverse Universe

The Inverse Universe completely reimagines the original color for something new.



51.2337, -5.4276, -10.2744



65.9176, -7.4230, -18.4039



44.6566, 5.8835, -20.2782



28.1471, -2.0574, -0.4245



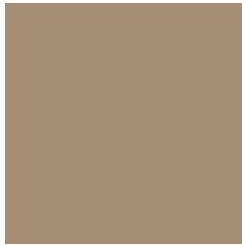
27.2866, 4.5340, -43.8936



5.3173, -1.0721, -4.3317

Previews

White Background



This preview shows how the HunterLab color 53.3524, 2.0548, 13.8644 looks on a white background.

Color Contrast Check

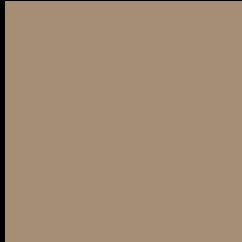
Large Text (above 18pt) WCAG AA ✓ Pass

Any Text WCAG AA × Fail

Large Text (above 18pt) WCAG AAA × Fail

Any Text WCAG AAA × Fail

Black Background



This preview shows how the HunterLab color 53.3524, 2.0548, 13.8644 looks on a black background.

Color Contrast Check

Large Text (above 18pt) WCAG AA ✓ Pass

Any Text WCAG AA ✓ Pass

Large Text (above 18pt) WCAG AAA ✓ Pass

Any Text WCAG AAA × Fail

If you want to check with other color combinations, try the [Color Contrast Checker](#).

HunterLab 53.3524, 2.0548, 13.8644 Background



This preview shows how black text looks on a background with the HunterLab color 53.3524, 2.0548, 13.8644.



This preview shows how white text looks on a background with the HunterLab color 53.3524, 2.0548,

Color Blindness Simulation

Color vision deficiency is a very complex topic, and I could not describe the different causes any better than Wikipedia does, so if you want to learn more, you should check out their [article about color blindness](#).

Dichromacy



Original Color

53.3524, 2.0548, 13.8644

Protanopia

53.3637, -3.6010, 13.0768

Deuteranopia

53.3846, 3.5774, 13.9225



Tritanopia

53.3225, 9.0347, 2.3223

Trichromacy



Original Color

53.3524, 2.0548, 13.8644

Protanomaly

53.4299, -1.9517, 13.5221

Deuteranomaly

53.2813, 3.2302, 13.8158

Tritanomaly

53.1783, 6.5656, 6.9137

Monochromacy



Original Color

53.3524, 2.0548, 13.8644

Achromatopsia

53.6135, -2.8607, 2.9129

Achromatomaly

53.3820, -1.2826, 7.0009

CSS Examples

Text

The CSS property to change the color of the text to HunterLab 53.3524, 2.0548, 13.8644 is called "color". The color property can be set on classes, ids or directly on the HTML element.

This example shows how text in the color `rgb(166, 141, 118)` looks like.

```
.text, #text, p{  
    color:rgb(166, 141, 118)  
}
```

If you want to add a text shadow in that color use the text-shadow property, you can generate a text shadow directly with our [CSS Text Shadow Generator](#).

Here you see how black text with a 4 pixel rgb(166, 141, 118) colored shadow looks like.

```
.shadow{ text-shadow: 4px 4px 2px rgb(166, 141, 118) }
```

Border

The CSS property to change the border of an element to HunterLab 53.3524, 2.0548, 13.8644 is called "border". The border property can be set on classes, ids or directly on the HTML element.

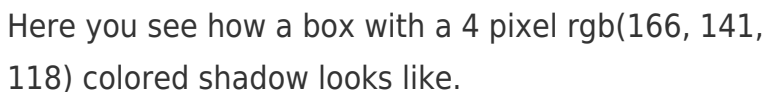
This example shows the color as border, it can be applied via the CSS property "border" or "border-color".

```
.border, #border, table{ border:4px solid rgb(166, 141, 118) }
```


If only the border color should be changed use the property `border-color`.

```
.border{ border-color:rgb(166, 141, 118) }
```

If you want to add a box shadow in that color use:



Here you see how a box with a 4 pixel `rgb(166, 141, 118)` colored shadow looks like.

```
.boxshadow{ -moz-box-shadow:4px 4px 4px 4px rgb(166, 141, 118); -webkit-box-shadow:4px 4px 4px 4px rgb(166, 141, 118); box-shadow:4px 4px 4px 4px rgb(166, 141, 118) }
```

Background

The CSS property to change the background color of an element to HunterLab 53.3524, 2.0548, 13.8644 is called "background". The background property can be set on classes, ids or directly on the HTML element.

```
.background, #background, body{  
background: rgb(166, 141, 118) }
```

If only the background color should be changed can be used:

```
.background{ background-color: rgb(166,  
141, 118) }
```

This example shows the color as background, it is applied via the CSS property "background".

To optimize and compress your CSS code, you can use our [online CSS compressor and optimizer](#) based on csstidy. If you want to create a linear or radial gradient as background or border, check our [CSS Gradient Generator](#).

Hey! You found this booklet interesting? Support Converting Colors with the new Membership Option!

The pro membership hides all ads, plus gives you double the colors in the color bucket, and more awesome pro features!

[Learn more, Memberships starting at \\$2.50/m!](#)

**Follow me
on Twitter!**

@ConvertingColor