

Converting Colors

HunterLab(53.3945, 12.8875,
16.1053)

Have a look what the booklet for
HunterLab(53.3945, 12.8875,
16.1053) contains.

HunterLab(53.3945, 12.8874, 16.1052)	3
<i>Conversions</i>	4
<i>Details</i>	6
<i>Harmonies</i>	12
<i>Previews</i>	24
<i>Color Blindness Simulation</i>	28
<i>CSS Examples</i>	31

Color

**HunterLab(53.3945, 12.8874,
16.1052)**

Conversions

Conversions Part 1

Format	Color
Hex	BB8570
RGB	187, 133, 112
RGB Percent	73%, 52%, 44%
CMY	0.2667, 0.4784, 0.5608
CMYK	0.00, 0.29, 0.40, 0.27
HSL	17°, 36%, 59%
HSV	17°, 40%, 73%
XYZ	31.8057, 28.5097, 19.1559
YIQ	146.7520, 38.9250, 4.9170

Conversions

Conversions Part 2

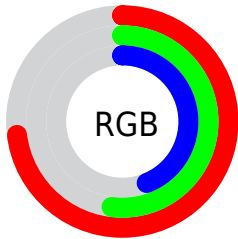
Format	Color
RYB	187, 141, 112
Decimal	12289392
CIELab	60.35, 18.05, 19.57
CIElCh	60, 26.619, 47.311
Yxy	28.5111, 0.4002, 0.3587
Android (android.graphics.Color)	4290479472 (0xFFBB8570)
YUV	146.7520, -17.1327, 35.2975
Hunter-Lab	53.3945, 12.8874, 16.1052

Details

The HunterLab color **53.3945, 12.8874, 16.1052** is a dark color, and the websafe version is hex **CC9999**. A complement of this color would be **58.5694, -13.2382, -11.7336**, and the grayscale version is **53.9728, -2.8799, 2.9324**.

A 20% lighter version of the original color is **75.6377, 13.7515, 19.3174**, and **33.8559, 12.1102, 12.5795** is the 20% darker color. If you saturate the color by 10%, you get **49.6825, 17.7654, 18.4829**, and if you desaturate by 10%, it is **57.3566, 8.3047, 13.4012**.

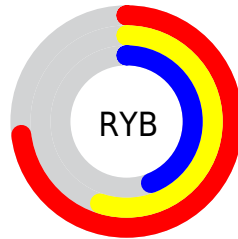
Distribution



Red (73%)

Green (52%)

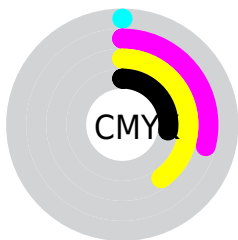
Blue (44%)



Red (73%)

Yellow (55%)

Blue (44%)

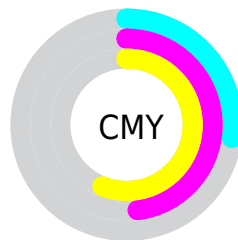


Cyan (0%)

Magenta (29%)

Yellow (40%)

Black (27%)



Cyan (27%)

Magenta (48%)

Yellow (56%)

Brightness & Saturation Gradients

These gradients show how the HunterLab color 53.3945, 12.8874, 16.1052 changes by changing the brightness by 10 percent. The first figure shows a shift by +10% for each color and the second figure -10%.

Similar to the brightness gradients but the following saturation gradients show a change of the HunterLab color 53.3945, 12.8874, 16.1052 by changing the saturation by 10% instead.

■ 53.3945, 12.8874,
16.1052

■ 53.3945, 12.8874,
16.1052

171.7269, 13.3867,
30.5238

■ 43.2565, 12.4792,
14.3725

■ 75.6964, 13.4385,
19.4338

■ 33.8554, 11.9712,
12.5671

■ 87.7819, 13.6040,
21.0526

■ 25.2555, 11.3446,
10.6579

■ 100.4500, 13.7043,
22.6523

■ 17.5400, 10.5773,
8.5939

■ 113.6748, 13.7446,
24.2385

■ 10.8250, 9.6427,
7.5775

127.4338, 13.7296,
25.8157

■ 1.9620, 39.9791,
1.3734

141.7072, 13.6628,

0.0000, NaN, NaN

27.3873

0.0000, NaN, NaN

156.4769, 13.5476,
28.9559

0.0000, NaN, NaN

■ 53.3945, 12.8874,
16.1052

■ 53.3945, 12.8874,
16.1052

■ 49.6825, 17.7654,
18.4829

■ 57.3566, 8.3047,
13.4012

■ 46.2512, 22.9239,
20.4593

■ 61.5347, 4.0219,
10.4292

■ 43.1402, 28.3006,
21.9537

■ 65.9046, 0.0204,
7.2383

■ 40.3902, 33.7810,
22.8860

■ 70.4444, -3.7229,
3.8667

■ 38.0400, 39.1832,
23.2002

■ 75.1357, -7.2334,
0.3440

■ 36.1302, 44.1682,
23.0365

■ 79.9631, -10.5366,
-3.3069

■ 84.9133, -13.6561,
-7.0680

■ 89.7347, -17.9656,
-7.5301

■ 94.2219, -24.6223,
-1.9048

Harmonies

Analogous

The Analogous color harmony consists of three colors that are next to each other on the color wheel.



53.3958, 19.7974, 8.7621



53.3945, 12.8874, 16.1052



53.3958, 2.0629, 19.5474

Triad

The Triadic color harmony groups three colors that are evenly spaced from another and form a triangle on the color wheel.



53.3958, 12.8850, 16.1060



53.3958, -22.6500, 7.2987



53.3958, 3.8481, -21.1601

Complementary

The Complementary color scheme is a pair of colors which are on the opposite of each other on the color wheel.



53.3945, 12.8874, 16.1052



58.5694, -13.2382, -11.7336

Split Complementary

Split-complementary colors differ from the complementary color scheme. The scheme consists of three colors, the original color and two neighbors of the complement color.



53.3958, -7.5952, -21.7837



53.3945, 12.8874, 16.1052



53.3958, -22.2599, -3.6980

Square

The Square scheme is like the rectangle color scheme, but the four colors are evenly spaced on the color wheel.



53.3958, 12.8850, 16.1060



53.3958, -18.0687, 15.2297



53.3958, -16.9541, -14.8625



53.3958, 14.2862, -13.3046

Rectangle

The Rectangle color scheme consists of four colors that form a rectangle on the color wheel.



53.3945, 12.8874, 16.1052



53.3958, -5.6208, 19.7660



53.3958, -16.9541, -14.8625



53.3958, -0.0255, -22.2734

Sweetspot

The Sweet Spot groups the original color and five complimentary colors.



53.3958, 12.8850, 16.1060



86.9583, 1.1157, 10.5999



49.9434, 31.4821, -12.0752



40.4446, 0.8474, 5.2402



97.7295, -5.2146, 5.3098



44.2712, -2.3622, 2.4053

Same Dimension

The Same Dimension uses a secret algorithm to generate beautiful new colors.



53.3958, 12.8850, 16.1060



67.1294, 22.8838, 24.3409



63.4800, -5.0826, 24.7093



31.5591, -0.1277, 3.3314



30.1683, 36.1423, 19.2223



6.8642, 4.7898, 4.3135

Inverse Universe

The Inverse Universe completely reimagines the original color for something new.



58.5694, -13.2382, -11.7336



75.3639, -19.0668, -20.1375



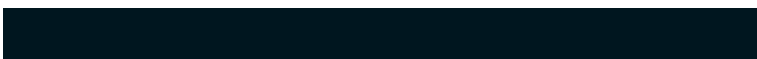
47.8179, 4.2971, -28.7525



32.1644, -3.1414, 0.0921



38.0354, -9.4126, -27.2219



8.1964, -2.8108, -4.1771

Previews

White Background



This preview shows how the HunterLab color 53.3945, 12.8874, 16.1052 looks on a white background.

Color Contrast Check

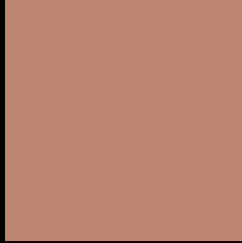
Large Text (above 18pt) WCAG AA ✓ Pass

Any Text WCAG AA × Fail

Large Text (above 18pt) WCAG AAA × Fail

Any Text WCAG AAA × Fail

Black Background



This preview shows how the HunterLab color 53.3945, 12.8874, 16.1052 looks on a black background.

Color Contrast Check

Large Text (above 18pt) WCAG AA ✓ Pass

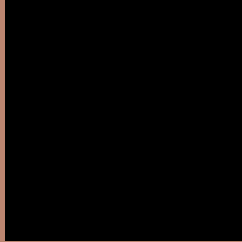
Any Text WCAG AA ✓ Pass

Large Text (above 18pt) WCAG AAA ✓ Pass

Any Text WCAG AAA × Fail

If you want to check with other color combinations, try the [Color Contrast Checker](#).

HunterLab 53.3945, 12.8874, 16.1052 Background



This preview shows how black text looks on a background with the HunterLab color 53.3945, 12.8874, 16.1052.



This preview shows how white text looks on a background with the HunterLab color 53.3945, 12.8874,

Color Blindness Simulation

Color vision deficiency is a very complex topic, and I could not describe the different causes any better than Wikipedia does, so if you want to learn more, you should check out their [article about color blindness](#).

Dichromacy



Original Color

53.3945, 12.8874, 16.1052

Protanopia

53.6976, -3.9973, 14.0937

Deuteranopia

53.5486, 3.8278, 16.4120



Tritanopia

53.3964, 19.3655, 6.1195

Trichromacy



Original Color

53.3945, 12.8874, 16.1052

Protanomaly

53.4099, 2.1615, 14.6067

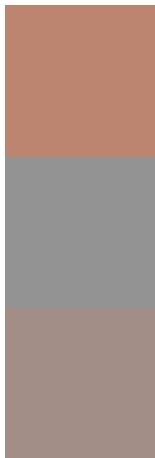
Deuteranomaly

53.2786, 7.0920, 16.2185

Tritanomaly

53.2626, 17.1539, 10.0013

Monochromacy



Original Color

53.3945, 12.8874, 16.1052

Achromatopsia

54.0158, -2.8821, 2.9348

Achromatomaly

53.6177, 2.3019, 8.1390

CSS Examples

Text

The CSS property to change the color of the text to HunterLab 53.3945, 12.8874, 16.1052 is called "color". The color property can be set on classes, ids or directly on the HTML element.

This example shows how text in the color `rgb(187, 133, 112)` looks like.

```
.text, #text, p{  
    color:rgb(187, 133, 112)  
}
```

If you want to add a text shadow in that color use the text-shadow property, you can generate a text shadow directly with our [CSS Text Shadow Generator](#).

Here you see how black text with a 4 pixel rgb(187, 133, 112) colored shadow looks like.

```
.shadow{ text-shadow: 4px 4px 2px rgb(187, 133, 112) }
```

Border

The CSS property to change the border of an element to HunterLab 53.3945, 12.8874, 16.1052 is called "border". The border property can be set on classes, ids or directly on the HTML element.

This example shows the color as border, it can be applied via the CSS property "border" or "border-color".

```
.border, #border, table{ border:4px solid rgb(187, 133, 112) }
```


If only the border color should be changed use the property `border-color`.

```
.border{ border-color:rgb(187, 133, 112) }
```

If you want to add a box shadow in that color use:

Here you see how a box with a 4 pixel `rgb(187, 133, 112)` colored shadow looks like.

```
.boxshadow{ -moz-box-shadow:4px 4px 4px  
4px rgb(187, 133, 112); -webkit-box-  
shadow:4px 4px 4px 4px rgb(187, 133, 112);  
box-shadow:4px 4px 4px 4px rgb(187, 133,  
112) }
```

Background

The CSS property to change the background color of an element to HunterLab 53.3945, 12.8874, 16.1052 is called "background". The background property can be set on classes, ids or directly on the HTML element.

```
.background, #background, body{  
background: rgb(187, 133, 112) }
```

If only the background color should be changed can be used:

```
.background{ background-color: rgb(187,  
133, 112) }
```

This example shows the color as background, it is applied via the CSS property "background".

To optimize and compress your CSS code, you can use our [online CSS compressor and optimizer](#) based on csstidy. If you want to create a linear or radial gradient as background or border, check our [CSS Gradient Generator](#).

Hey! You found this booklet interesting? Support Converting Colors with the new Membership Option!

The pro membership hides all ads, plus gives you double the colors in the color bucket, and more awesome pro features!

[Learn more, Memberships starting at \\$2.50/m!](#)

**Follow me
on Twitter!**

@ConvertingColor