

Converting Colors

HunterLab(53.4156, 8.6417,
17.4165)

Have a look what the booklet for
HunterLab(53.4156, 8.6417,
17.4165) contains.

HunterLab(53.3992, 8.7290, 17.3047)	3
<i>Conversions</i>	4
<i>Details</i>	6
<i>Harmonies</i>	12
<i>Previews</i>	24
<i>Color Blindness Simulation</i>	28
<i>CSS Examples</i>	31

Color

**HunterLab(53.3992, 8.7290,
17.3047)**

Conversions

Conversions Part 1

Format	Color
Hex	B5886C
RGB	181, 136, 108
RGB Percent	71%, 53%, 42%
CMY	0.2902, 0.4666, 0.5765
CMYK	0.00, 0.25, 0.40, 0.29
HSL	23°, 33%, 57%
HSV	23°, 40%, 71%
XYZ	30.5670, 28.5147, 18.0802
YIQ	146.2630, 35.8080, 0.8320

Conversions

Conversions Part 2

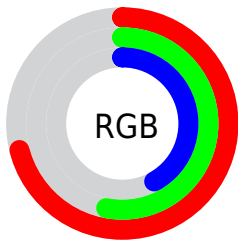
Format	Color
R _Y B	181, 153, 108
Decimal	11896940
CIE Lab	60.35, 13.46, 21.71
CIE LCh	60, 25.547, 58.200
Yxy	28.5161, 0.3961, 0.3695
Android (android.graphics.Color)	4290087020 (0xFFB5886C)
YUV	146.2630, -18.8637, 30.4643
Hunter-Lab	53.3992, 8.7290, 17.3047

Details

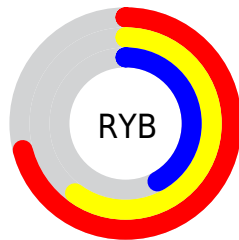
The HunterLab color $53.3992, 8.7290, 17.3047$ is a dark color, and the websafe version is hex $CC9966$. A complement of this color would be $54.1348, -9.2835, -14.6840$, and the grayscale version is $53.7836, -2.8698, 2.9222$.

A 20% lighter version of the original color is $75.5714, 9.0041, 20.6319$, and $33.7897, 8.2094, 13.4636$ is the 20% darker color. If you saturate the color by 10%, you get $50.1887, 12.5069, 19.7441$, and if you desaturate by 10%, it is $56.7894, 5.2469, 14.4416$.

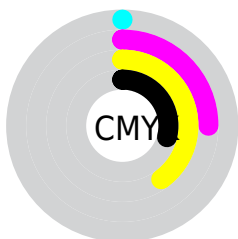
Distribution



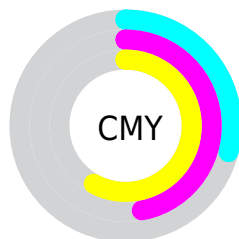
- Red (71%)
- Green (53%)
- Blue (42%)



- Red (71%)
- Yellow (60%)
- Blue (42%)



- Cyan (0%)
- Magenta (25%)
- Yellow (40%)
- Black (29%)



- Cyan (29%)
- Magenta (47%)
- Yellow (58%)

Brightness & Saturation Gradients

These gradients show how the HunterLab color 53.3992, 8.7290, 17.3047 changes by changing the brightness by 10 percent. The first figure shows a shift by +10% for each color and the second figure -10%.

Similar to the brightness gradients but the following saturation gradients show a change of the HunterLab color 53.3992, 8.7290, 17.3047 by changing the saturation by 10% instead.

■ 53.3992, 8.7290,
17.3047

■ 53.3992, 8.7290,
17.3047

171.7338, 7.5483,
32.6677

■ 43.2609, 8.5492,
15.4290

■ 75.7016, 8.8554,
20.8870

■ 33.8594, 8.2821,
13.4663

■ 87.7875, 8.8219,
22.6203

■ 25.2591, 7.9103,
11.3815

■ 100.4557, 8.7309,
24.3279

■ 17.5432, 7.4124,
9.1192

■ 113.6808, 8.5869,
26.0165

■ 10.8277, 6.7580,
7.5794

127.4401, 8.3937,
27.6911

■ 1.9745, 29.6035,
1.3822

141.7137, 8.1544,

0.0000, NaN, NaN

29.3558

0.0000, NaN, NaN

156.4836, 7.8718,
31.0138

0.0000, NaN, NaN

■ 53.3992, 8.7290,
17.3047

■ 53.3992, 8.7290,
17.3047

■ 50.1887, 12.5069,
19.7441

■ 56.7894, 5.2469,
14.4416

■ 47.1743, 16.5883,
21.6962

■ 60.3372, 2.0550,
11.2086

■ 44.3796, 20.9539,
23.0998

■ 64.0280, -0.8676,
7.6555

■ 41.8279, 25.5590,
23.9008

■ 67.8478, -3.5425,
3.8243

■ 39.5420, 30.3219,
24.0701

■ 71.7845, -5.9921,
-0.2494

■ 37.5947, 34.9191,
23.7770

■ 75.8275, -8.2378,
-4.5359

■ 79.9679, -10.3002,
-9.0105

■ 84.1977, -12.1978,
-13.6525

■ 87.9051, -17.3357,
-9.9475

Harmonies

Analogous

The Analogous color harmony consists of three colors that are next to each other on the color wheel.



53.4005, 17.0428, 11.5476



53.3992, 8.7290, 17.3047



53.4005, -2.1877, 19.3275

Triad

The Triadic color harmony groups three colors that are evenly spaced from another and form a triangle on the color wheel.



53.4005, 8.7267, 17.3054



53.4005, -22.3461, 3.5335



53.4005, 7.4878, -17.9788

Complementary

The Complementary color scheme is a pair of colors which are on the opposite of each other on the color wheel.



53.3992, 8.7290, 17.3047



54.1348, -9.2835, -14.6840

Split Complementary

Split-complementary colors differ from the complementary color scheme. The scheme consists of three colors, the original color and two neighbors of the complement color.



53.4005, -3.5134, -21.2960



53.3992, 8.7290, 17.3047



53.4005, -20.2031, -7.4735

Square

The Square scheme is like the rectangle color scheme, but the four colors are evenly spaced on the color wheel.



53.4005, 8.7267, 17.3054



53.4005, -19.6263, 12.4382



53.4005, -13.5215, -17.1185



53.4005, 16.2879, -8.7879

Rectangle

The Rectangle color scheme consists of four colors that form a rectangle on the color wheel.



53.3992, 8.7290, 17.3047



53.4005, -9.2832, 18.6739



53.4005, -13.5215, -17.1185



53.4005, 3.8984, -19.8902

Sweetspot

The Sweet Spot groups the original color and five complimentary colors.



53.4005, 8.7267, 17.3054



84.7500, -0.4559, 11.1640



47.8013, 29.0086, -7.4267



39.1055, 0.0145, 5.4776



95.4677, -5.0939, 5.1869



42.2927, -2.2566, 2.2978

Same Dimension

The Same Dimension uses a secret algorithm to generate beautiful new colors.



53.4005, 8.7267, 17.3054



67.8071, 15.9379, 25.9641



63.7149, -8.9434, 25.9019



30.0366, -0.5368, 3.3935



31.4146, 28.4662, 19.8559



6.5226, 2.8029, 4.0682

Inverse Universe

The Inverse Universe completely reimagines the original color for something new.



54.1348, -9.2835, -14.6840



68.9559, -12.7766, -25.0530



43.7435, 8.4489, -32.1504



30.1214, -2.5582, -0.1961



32.1869, -2.0910, -35.7170



6.5927, -1.7347, -4.4957

Previews

White Background



This preview shows how the HunterLab color 53.3992, 8.7290, 17.3047 looks on a white background.

Color Contrast Check

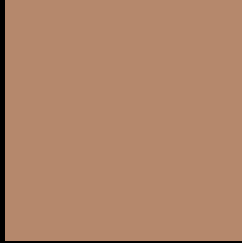
Large Text (above 18pt) WCAG AA ✓ Pass

Any Text WCAG AA × Fail

Large Text (above 18pt) WCAG AAA × Fail

Any Text WCAG AAA × Fail

Black Background



This preview shows how the HunterLab color 53.3992, 8.7290, 17.3047 looks on a black background.

Color Contrast Check

Large Text (above 18pt) WCAG AA ✓ Pass

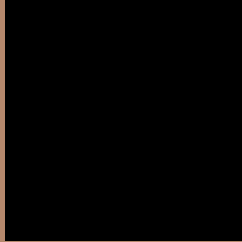
Any Text WCAG AA ✓ Pass

Large Text (above 18pt) WCAG AAA ✓ Pass

Any Text WCAG AAA × Fail

If you want to check with other color combinations, try the [Color Contrast Checker](#).

HunterLab 53.3992, 8.7290, 17.3047 Background



This preview shows how black text looks on a background with the HunterLab color 53.3992, 8.7290, 17.3047.



This preview shows how white text looks on a background with the HunterLab color 53.3992, 8.7290,

Color Blindness Simulation

Color vision deficiency is a very complex topic, and I could not describe the different causes any better than Wikipedia does, so if you want to learn more, you should check out their [article about color blindness](#).

Dichromacy



Original Color

53.3992, 8.7290, 17.3047

Protanopia

53.6615, -4.3812, 16.0521

Deuteranopia

53.4681, 3.3965, 17.5817



Tritanopia

53.2410, 16.4313, 5.0322

Trichromacy



Original Color

53.3992, 8.7290, 17.3047

Protanomaly

53.3789, 0.4178, 16.1948

Deuteranomaly

53.5170, 4.9581, 17.6533

Tritanomaly

53.3173, 13.4200, 9.9933

Monochromacy



Original Color

53.3992, 8.7290, 17.3047

Achromatopsia

53.6135, -2.8607, 2.9129

Achromatomaly

53.2756, 1.0373, 8.5521

CSS Examples

Text

The CSS property to change the color of the text to HunterLab 53.3992, 8.7290, 17.3047 is called "color". The color property can be set on classes, ids or directly on the HTML element.

This example shows how text in the color `rgb(181, 136, 108)` looks like.

```
.text, #text, p{  
    color:rgb(181, 136, 108)  
}
```

If you want to add a text shadow in that color use the text-shadow property, you can generate a text shadow directly with our [CSS Text Shadow Generator](#).

Here you see how black text with a 4 pixel rgb(181, 136, 108) colored shadow looks like.

```
.shadow{ text-shadow: 4px 4px 2px rgb(181, 136, 108) }
```

Border

The CSS property to change the border of an element to HunterLab 53.3992, 8.7290, 17.3047 is called "border". The border property can be set on classes, ids or directly on the HTML element.

This example shows the color as border, it can be applied via the CSS property "border" or "border-color".

```
.border, #border, table{ border:4px solid rgb(181, 136, 108) }
```


If only the border color should be changed use the property `border-color`.

```
.border{ border-color:rgb(181, 136, 108) }
```

If you want to add a box shadow in that color use:

Here you see how a box with a 4 pixel `rgb(181, 136, 108)` colored shadow looks like.

```
.boxshadow{ -moz-box-shadow:4px 4px 4px  
4px rgb(181, 136, 108); -webkit-box-  
shadow:4px 4px 4px 4px rgb(181, 136, 108);  
box-shadow:4px 4px 4px 4px rgb(181, 136,  
108) }
```

Background

The CSS property to change the background color of an element to HunterLab 53.3992, 8.7290, 17.3047 is called "background". The background property can be set on classes, ids or directly on the HTML element.

```
.background, #background, body{  
background: rgb(181, 136, 108) }
```

If only the background color should be changed can be used:

```
.background{ background-color: rgb(181,  
136, 108) }
```

This example shows the color as background, it is applied via the CSS property "background".

To optimize and compress your CSS code, you can use our [online CSS compressor and optimizer](#) based on csstidy. If you want to create a linear or radial gradient as background or border, check our [CSS Gradient Generator](#).

Hey! You found this booklet interesting? Support Converting Colors with the new Membership Option!

The pro membership hides all ads, plus gives you double the colors in the color bucket, and more awesome pro features!

[Learn more, Memberships starting at \\$2.50/m!](#)

**Follow me
on Twitter!**

@ConvertingColor