

Converting Colors

HunterLab(53.4235, 8.5981,
17.5093)

Have a look what the booklet for
HunterLab(53.4235, 8.5981,
17.5093) contains.

HunterLab(53.3794, 8.6246, 17.5930)	3
<i>Conversions</i>	4
<i>Details</i>	6
<i>Harmonies</i>	12
<i>Previews</i>	24
<i>Color Blindness Simulation</i>	28
<i>CSS Examples</i>	31

Color

**HunterLab(53.3794, 8.6246,
17.5930)**

Conversions

Conversions Part 1

Format	Color
Hex	B5886B
RGB	181, 136, 107
RGB Percent	71%, 53%, 42%
CMY	0.2902, 0.4666, 0.5804
CMYK	0.00, 0.25, 0.41, 0.29
HSL	24°, 33%, 56%
HSV	24°, 41%, 71%
XYZ	30.5140, 28.4936, 17.8015
YIQ	146.1490, 36.1290, 0.5210

Conversions

Conversions Part 2

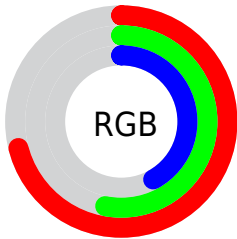
Format	Color
R_{YB}	181, 155, 107
Decimal	11896939
CIE _{Lab}	60.33, 13.35, 22.25
CIE _{LCh}	60, 25.943, 59.041
Yxy	28.4950, 0.3973, 0.3710
Android (android.graphics.Color)	4290087019 (0xFFB5886B)
YUV	146.1490, -19.3005, 30.5643
Hunter-Lab	53.3794, 8.6246, 17.5930

Details

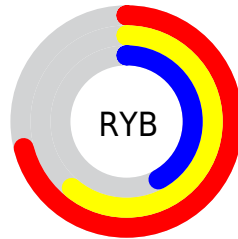
The HunterLab color $53.3794, 8.6246, 17.5930$ is a dark color, and the websafe version is hex $CC9966$. A complement of this color would be $53.7749, -9.0243, -15.2217$, and the grayscale version is $53.7393, -2.8674, 2.9198$.

A 20% lighter version of the original color is $75.5484, 8.8817, 20.9660$, and $33.7742, 8.1290, 13.6902$ is the 20% darker color. If you saturate the color by 10%, you get $50.2099, 12.3451, 20.0205$, and if you desaturate by 10%, it is $56.7254, 5.2008, 14.7303$.

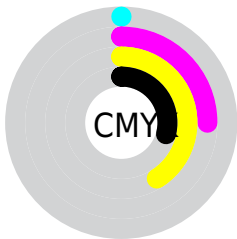
Distribution



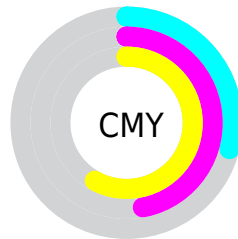
- Red (71%)
- Green (53%)
- Blue (42%)



- Red (71%)
- Yellow (61%)
- Blue (42%)



- Cyan (0%)
- Magenta (25%)
- Yellow (41%)
- Black (29%)



- Cyan (29%)
- Magenta (47%)
- Yellow (58%)

Brightness & Saturation Gradients


These gradients show how the HunterLab color 53.3794, 8.6246, 17.5930 changes by changing the brightness by 10 percent. The first figure shows a shift by +10% for each color and the second figure -10%.

Similar to the brightness gradients but the following saturation gradients show a change of the HunterLab color 53.3794, 8.6246, 17.5930 by changing the saturation by 10% instead.

 53.3794, 8.6246,
17.5930


 53.3794, 8.6246,
17.5930

171.7046, 7.4016,
33.1938

 43.2425, 8.4506,
15.6812


 75.6794, 8.7403,
21.2393

 33.8424, 8.1896,
13.6787


 87.7641, 8.7018,
23.0014

 25.2437, 7.8242,
11.5496


 100.4313, 8.6060,
24.7363

 17.5295, 7.3332,
9.2415

 113.6553, 8.4574,
26.4506

 10.8161, 6.6860,
7.5713

127.4136, 8.2596,
28.1497

 1.9209, 30.1719,
1.3446

141.6863, 8.0160,

0.0000, NaN, NaN

29.8378

0.0000, NaN, NaN

156.4553, 7.7292,
31.5183

0.0000, NaN, NaN

■ 53.3794, 8.6246,
17.5930

■ 53.3794, 8.6246,
17.5930

■ 50.2099, 12.3451,
20.0205

■ 56.7254, 5.2008,
14.7303

■ 47.2326, 16.3704,
21.9500

■ 60.2265, 2.0681,
11.4862

■ 44.4703, 20.6817,
23.3217

■ 63.8684, -0.7942,
7.9110

■ 41.9450, 25.2363,
24.0841

■ 67.6376, -3.4074,
4.0472

■ 39.6787, 29.9553,
24.2120

■ 71.5222, -5.7937,
-0.0689

■ 37.8456, 34.2588,
23.9200

■ 75.5119, -7.9746,
-4.4069

■ 79.5979, -9.9702,
-8.9412

■ 83.7723, -11.7991,
-13.6503

■ 87.4602, -16.6588,
-10.5345

Harmonies

Analogous

The Analogous color harmony consists of three colors that are next to each other on the color wheel.



53.3807, 17.1991, 11.8819



53.3794, 8.6246, 17.5930



53.3807, -2.4921, 19.5296

Triad

The Triadic color harmony groups three colors that are evenly spaced from another and form a triangle on the color wheel.



53.3807, 8.6223, 17.5937



53.3807, -22.6267, 3.2456



53.3807, 7.9515, -18.1580

Complementary

The Complementary color scheme is a pair of colors which are on the opposite of each other on the color wheel.



53.3794, 8.6246, 17.5930



53.7749, -9.0243, -15.2217

Split Complementary

Split-complementary colors differ from the complementary color scheme. The scheme consists of three colors, the original color and two neighbors of the complement color.



53.3807, -3.2092, -21.7503



53.3794, 8.6246, 17.5930



53.3807, -20.3191, -7.9639

Square

The Square scheme is like the rectangle color scheme, but the four colors are evenly spaced on the color wheel.



53.3807, 8.6223, 17.5937



53.3807, -20.0078, 12.3619



53.3807, -13.4306, -17.6906



53.3807, 16.7899, -8.6768

Rectangle

The Rectangle color scheme consists of four colors that form a rectangle on the color wheel.



53.3794, 8.6246, 17.5930



53.3807, -9.6620, 18.8030



53.3807, -13.4306, -17.6906



53.3807, 4.3193, -20.1708

Sweetspot

The Sweet Spot groups the original color and five complimentary colors.



53.3807, 8.6223, 17.5937



84.8215, -0.5780, 11.2405



47.5681, 29.4568, -7.5392



39.1421, -0.0482, 5.5164



95.4677, -5.0939, 5.1869



42.2927, -2.2566, 2.2978

Same Dimension

The Same Dimension uses a secret algorithm to generate beautiful new colors.



53.3807, 8.6223, 17.5937



67.6347, 15.9713, 26.4774



63.6633, -8.9808, 26.1171



30.0557, -0.5693, 3.4143



31.6238, 27.9203, 19.9752



6.5578, 2.7275, 4.0887

Inverse Universe

The Inverse Universe completely reimagines the original color for something new.



53.7749, -9.0243, -15.2217



68.2441, -12.3200, -26.1858



43.4381, 8.6649, -32.7512



30.1018, -2.5262, -0.2198



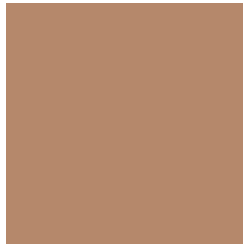
31.8343, -1.5061, -36.5390



6.5457, -1.6662, -4.5847

Previews

White Background



This preview shows how the HunterLab color 53.3794, 8.6246, 17.5930 looks on a white background.

Color Contrast Check

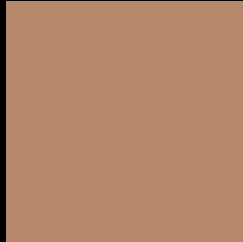
Large Text (above 18pt) WCAG AA ✓ Pass

Any Text WCAG AA × Fail

Large Text (above 18pt) WCAG AAA × Fail

Any Text WCAG AAA × Fail

Black Background



This preview shows how the HunterLab color 53.3794, 8.6246, 17.5930 looks on a black background.

Color Contrast Check

Large Text (above 18pt) WCAG AA ✓ Pass

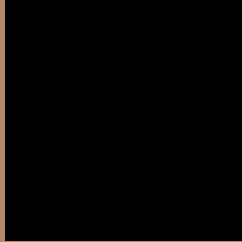
Any Text WCAG AA ✓ Pass

Large Text (above 18pt) WCAG AAA ✓ Pass

Any Text WCAG AAA × Fail

If you want to check with other color combinations, try the [Color Contrast Checker](#).

HunterLab 53.3794, 8.6246, 17.5930 Background



This preview shows how black text looks on a background with the HunterLab color 53.3794, 8.6246, 17.5930.



This preview shows how white text looks on a background with the HunterLab color 53.3794, 8.6246,

Color Blindness Simulation

Color vision deficiency is a very complex topic, and I could not describe the different causes any better than Wikipedia does, so if you want to learn more, you should check out their [article about color blindness](#).

Dichromacy



Original Color

53.3794, 8.6246, 17.5930

Protanopia

53.6408, -4.4950, 16.3518

Deuteranopia

53.5547, 3.6482, 17.9680



Tritanopia

53.2410, 16.4313, 5.0322

Trichromacy



Original Color

53.3794, 8.6246, 17.5930

Protanomaly

53.3583, 0.3066, 16.4928

Deuteranomaly

53.6059, 5.2150, 18.0415

Tritanomaly

53.3173, 13.4200, 9.9933

Monochromacy



Original Color

53.3794, 8.6246, 17.5930

Achromatopsia

53.6135, -2.8607, 2.9129

Achromatomaly

53.2756, 1.0373, 8.5521

CSS Examples

Text

The CSS property to change the color of the text to HunterLab 53.3794, 8.6246, 17.5930 is called "color". The color property can be set on classes, ids or directly on the HTML element.

This example shows how text in the color `rgb(181, 136, 107)` looks like.

```
.text, #text, p{  
    color:rgb(181, 136, 107)  
}
```

If you want to add a text shadow in that color use the text-shadow property, you can generate a text shadow directly with our [CSS Text Shadow Generator](#).

Here you see how black text with a 4 pixel rgb(181, 136, 107) colored shadow looks like.

```
.shadow{ text-shadow: 4px 4px 2px rgb(181, 136, 107) }
```

Border

The CSS property to change the border of an element to HunterLab 53.3794, 8.6246, 17.5930 is called "border". The border property can be set on classes, ids or directly on the HTML element.

This example shows the color as border, it can be applied via the CSS property "border" or "border-color".

```
.border, #border, table{ border:4px solid rgb(181, 136, 107) }
```


If only the border color should be changed use the property `border-color`.

```
.border{ border-color:rgb(181, 136, 107) }
```

If you want to add a box shadow in that color use:

Here you see how a box with a 4 pixel `rgb(181, 136, 107)` colored shadow looks like.

```
.boxshadow{ -moz-box-shadow:4px 4px 4px  
4px rgb(181, 136, 107); -webkit-box-  
shadow:4px 4px 4px 4px rgb(181, 136, 107);  
box-shadow:4px 4px 4px 4px rgb(181, 136,  
107) }
```

Background

The CSS property to change the background color of an element to HunterLab 53.3794, 8.6246, 17.5930 is called "background". The background property can be set on classes, ids or directly on the HTML element.

```
.background, #background, body{  
background: rgb(181, 136, 107) }
```

If only the background color should be changed can be used:

```
.background{ background-color: rgb(181,  
136, 107) }
```

This example shows the color as background, it is applied via the CSS property "background".

To optimize and compress your CSS code, you can use our [online CSS compressor and optimizer](#) based on csstidy. If you want to create a linear or radial gradient as background or border, check our [CSS Gradient Generator](#).

Hey! You found this booklet interesting? Support Converting Colors with the new Membership Option!

The pro membership hides all ads, plus gives you double the colors in the color bucket, and more awesome pro features!

[Learn more, Memberships starting at \\$2.50/m!](#)

**Follow me
on Twitter!**

@ConvertingColor