

Converting Colors

HunterLab(53.4350, 15.8307,
4.3792)

Have a look what the booklet for
HunterLab(53.4350, 15.8307,
4.3792) contains.

HunterLab(53.4350, 15.8491, 4.3698)	3
<i>Conversions</i>	4
<i>Details</i>	6
<i>Harmonies</i>	12
<i>Previews</i>	24
<i>Color Blindness Simulation</i>	28
<i>CSS Examples</i>	31

Color

**HunterLab(53.4350, 15.8491,
4.3698)**

Conversions

Conversions Part 1

Format	Color
Hex	B7848F
RGB	183, 132, 143
RGB Percent	72%, 52%, 56%
CMY	0.2824, 0.4823, 0.4392
CMYK	0.00, 0.28, 0.22, 0.28
HSL	347°, 26%, 62%
HSV	347°, 28%, 72%
XYZ	32.7376, 28.5530, 29.7725
YIQ	148.5030, 26.8650, 14.2330

Conversions

Conversions Part 2

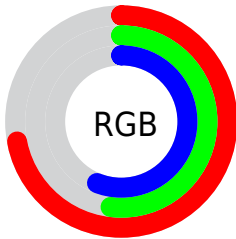
Format	Color
R_{YB}	183, 132, 143
Decimal	12027023
CIE _{Lab}	60.39, 21.24, 1.89
CIE _{LCh}	60, 21.323, 5.079
Yxy	28.5543, 0.3595, 0.3136
Android (android.graphics.Color)	4290217103 (0xFFB7848F)
YUV	148.5030, -2.7130, 30.2539
Hunter-Lab	53.4350, 15.8491, 4.3698

Details

The HunterLab color **53.4350, 15.8491, 4.3698** is a light color, and the websafe version is hex **CC9999**. A complement of this color would be **64.6156, -19.4378, 3.6608**, and the grayscale version is **54.6254, -2.9147, 2.9679**.

A 20% lighter version of the original color is **75.6666, 17.0568, 5.5333**, and **33.8999, 14.6362, 3.0330** is the 20% darker color. If you saturate the color by 10%, you get **48.5912, 23.1561, 5.1551**, and if you desaturate by 10%, it is **58.6718, 8.6733, 3.9100**.

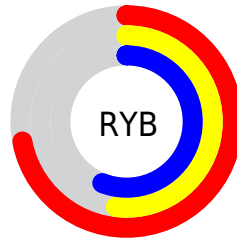
Distribution



Red (72%)

Green (52%)

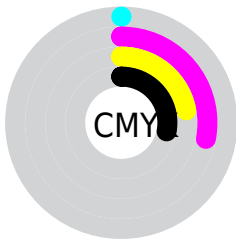
Blue (56%)



Red (72%)

Yellow (52%)

Blue (56%)

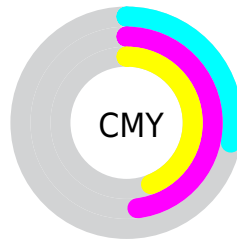


Cyan (0%)

Magenta (28%)

Yellow (22%)

Black (28%)



Cyan (28%)

Magenta (48%)

Yellow (44%)

Brightness & Saturation Gradients

These gradients show how the HunterLab color 53.4350, 15.8491, 4.3698 changes by changing the brightness by 10 percent. The first figure shows a shift by +10% for each color and the second figure -10%.

Similar to the brightness gradients but the following saturation gradients show a change of the HunterLab color 53.4350, 15.8491, 4.3698 by changing the saturation by 10% instead.

■ 53.4350, 15.8491,
4.3698

■ 53.4350, 15.8491,
4.3698

171.7866, 17.4934,
11.5256

■ 43.2943, 15.2880,
3.7167

■ 75.7418, 16.6878,
5.7701

■ 33.8901, 14.6197,
3.0945

■ 87.8297, 16.9884,
6.5133

■ 25.2870, 13.8255,
2.5052

■ 100.4999, 17.2190,
7.2842

■ 17.5679, 12.8847,
1.9495

113.7268, 17.3852,
8.0819

■ 10.8488, 11.7779,
1.4266

127.4879, 17.4919,
8.9056

■ 2.0679, 44.6462,
1.4475

141.7632, 17.5432,

0.0000, NaN, NaN

9.7546

0.0000, NaN, NaN

156.5348, 17.5427,
10.6281

0.0000, NaN, NaN

■ 53.4350, 15.8491,
4.3698

■ 53.4350, 15.8491,
4.3698

■ 48.5912, 23.1561,
5.1551

■ 58.6718, 8.6733,
3.9100

■ 44.2113, 30.4750,
6.3097

■ 64.2369, 1.6863,
3.7231

■ 40.3840, 37.5626,
7.8637

■ 70.0824, -5.1044,
3.7648

■ 37.2027, 44.0292,
9.8031

■ 76.1693, -11.7104,
3.9967

■ 34.7521, 49.3554,
12.0412

■ 82.4666, -18.1523,
4.3869

■ 33.0805, 53.0217,
14.4032

■ 88.9492, -24.4531,
4.9099

■ 32.1295, 54.8768,
16.6253

■ 93.8549, -28.1887,
3.5337

■ 31.9639, 55.2070,
17.0273

■ 94.2376, -26.0018,
-1.9093

Harmonies

Analogous

The Analogous color harmony consists of three colors that are next to each other on the color wheel.



53.4362, 14.0765, -4.6445



53.4350, 15.8491, 4.3698



53.4362, 12.3382, 11.6700

Triad

The Triadic color harmony groups three colors that are evenly spaced from another and form a triangle on the color wheel.



53.4362, 15.8470, 4.3708



53.4362, -12.6048, 14.8844



53.4362, -10.0755, -14.6274

Complementary

The Complementary color scheme is a pair of colors which are on the opposite of each other on the color wheel.



53.4350, 15.8491, 4.3698



64.6156, -19.4378, 3.6608

Split Complementary

Split-complementary colors differ from the complementary color scheme. The scheme consists of three colors, the original color and two neighbors of the complement color.



53.4362, -16.5184, -7.6447



53.4350, 15.8491, 4.3698



53.4362, -17.9083, 9.4984

Square

The Square scheme is like the rectangle color scheme, but the four colors are evenly spaced on the color wheel.



53.4362, 15.8470, 4.3708



53.4362, -4.4044, 17.0518



53.4362, -19.2916, 1.4041



53.4362, -1.2859, -16.6177

Rectangle

The Rectangle color scheme consists of four colors that form a rectangle on the color wheel.



53.4350, 15.8491, 4.3698



53.4362, 7.6076, 14.9043



53.4362, -19.2916, 1.4041



53.4362, -12.5681, -12.7347

Sweetspot

The Sweet Spot groups the original color and five complimentary colors.



53.4362, 15.8470, 4.3708



85.7636, 2.5017, 4.9850



53.5610, 18.9175, -16.2566



39.7676, 1.8302, 2.3512



96.5975, -5.1542, 5.2483



43.2801, -2.3093, 2.3515

Same Dimension

The Same Dimension uses a secret algorithm to generate beautiful new colors.



53.4362, 15.8470, 4.3708



67.7601, 26.7480, 6.3879



56.9484, 7.0440, 12.4856



30.0717, 1.2821, 1.7717



26.7132, 46.1697, 13.9863



5.1072, 9.0058, 1.2883

Inverse Universe

The Inverse Universe completely reimagines the original color for something new.



53.4362, 15.8470, 4.3708



67.7601, 26.7480, 6.3879



60.4435, -10.7774, -6.8887



30.0717, 1.2821, 1.7717



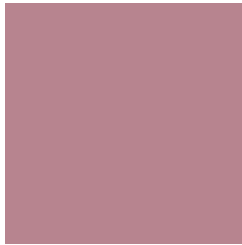
26.7132, 46.1697, 13.9863



5.1072, 9.0058, 1.2883

Previews

White Background



This preview shows how the HunterLab color 53.4350, 15.8491, 4.3698 looks on a white background.

Color Contrast Check

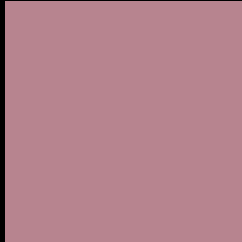
Large Text (above 18pt) WCAG AA ✓ Pass

Any Text WCAG AA × Fail

Large Text (above 18pt) WCAG AAA × Fail

Any Text WCAG AAA × Fail

Black Background



This preview shows how the HunterLab color 53.4350, 15.8491, 4.3698 looks on a black background.

Color Contrast Check

Large Text (above 18pt) WCAG AA ✓ Pass

Any Text WCAG AA ✓ Pass

Large Text (above 18pt) WCAG AAA ✓ Pass

Any Text WCAG AAA × Fail

If you want to check with other color combinations, try the [Color Contrast Checker](#).

HunterLab 53.4350, 15.8491, 4.3698 Background



This preview shows how black text looks on a background with the HunterLab color 53.4350, 15.8491, 4.3698.



This preview shows how white text looks on a background with the HunterLab color 53.4350, 15.8491,

4.3698.

Color Blindness Simulation

Color vision deficiency is a very complex topic, and I could not describe the different causes any better than Wikipedia does, so if you want to learn more, you should check out their [article about color blindness](#).

Dichromacy



Original Color

53.4350, 15.8491, 4.3698

Protanopia

53.5614, -1.2723, 0.5724

Deuteranopia

53.5296, 3.8032, 5.1403



Tritanopia

53.4067, 15.7042, 4.7736

Trichromacy



Original Color

53.4350, 15.8491, 4.3698

Protanomaly

53.2615, 4.7219, 1.7140

Deuteranomaly

53.5500, 8.1160, 4.8050

Tritanomaly

53.4067, 15.7042, 4.7736

Monochromacy



Original Color

53.4350, 15.8491, 4.3698

Achromatopsia

54.8219, -2.9252, 2.9786

Achromatomaly

54.1559, 3.4060, 3.2095

CSS Examples

Text

The CSS property to change the color of the text to HunterLab 53.4350, 15.8491, 4.3698 is called "color". The color property can be set on classes, ids or directly on the HTML element.

This example shows how text in the color `rgb(183, 132, 143)` looks like.

```
.text, #text, p{  
    color:rgb(183, 132, 143)  
}
```

If you want to add a text shadow in that color use the text-shadow property, you can generate a text shadow directly with our [CSS Text Shadow Generator](#).

Here you see how black text with a 4 pixel rgb(183, 132, 143) colored shadow looks like.

```
.shadow{ text-shadow: 4px 4px 2px rgb(183, 132, 143) }
```

Border

The CSS property to change the border of an element to HunterLab 53.4350, 15.8491, 4.3698 is called "border". The border property can be set on classes, ids or directly on the HTML element.

This example shows the color as border, it can be applied via the CSS property "border" or "border-color".

```
.border, #border, table{ border:4px solid rgb(183, 132, 143) }
```


If only the border color should be changed use the property border-color.

```
.border{ border-color:rgb(183, 132, 143) }
```

If you want to add a box shadow in that color use:

Here you see how a box with a 4 pixel rgb(183, 132, 143) colored shadow looks like.

```
.boxshadow{ -moz-box-shadow:4px 4px 4px  
4px rgb(183, 132, 143); -webkit-box-  
shadow:4px 4px 4px 4px rgb(183, 132, 143);  
box-shadow:4px 4px 4px 4px rgb(183, 132,  
143) }
```

Background

The CSS property to change the background color of an element to HunterLab 53.4350, 15.8491, 4.3698 is called "background". The background property can be set on classes, ids or directly on the HTML element.

```
.background, #background, body{  
background: rgb(183, 132, 143) }
```

If only the background color should be changed can be used:

```
.background{ background-color: rgb(183,  
132, 143) }
```

This example shows the color as background, it is applied via the CSS property "background".

To optimize and compress your CSS code, you can use our [online CSS compressor and optimizer](#) based on csstidy. If you want to create a linear or radial gradient as background or border, check our [CSS Gradient Generator](#).

Hey! You found this booklet interesting? Support Converting Colors with the new Membership Option!

The pro membership hides all ads, plus gives you double the colors in the color bucket, and more awesome pro features!

[Learn more, Memberships starting at \\$2.50/m!](#)

**Follow me
on Twitter!**

@ConvertingColor