

Converting Colors

HunterLab(53.5528, 11.1144,
11.7315)

Have a look what the booklet for
HunterLab(53.5528, 11.1144,
11.7315) contains.

HunterLab(53.5092, 11.1777, 11.6697)	3
<i>Conversions</i>	4
<i>Details</i>	6
<i>Harmonies</i>	12
<i>Previews</i>	24
<i>Color Blindness Simulation</i>	28
<i>CSS Examples</i>	31

Color

**HunterLab(53.5092, 11.1777,
11.6697)**

Conversions

Conversions Part 1

Format	Color
Hex	B5877D
RGB	181, 135, 125
RGB Percent	71%, 53%, 49%
CMY	0.2902, 0.4706, 0.5098
CMYK	0.00, 0.25, 0.31, 0.29
HSL	11°, 27%, 60%
HSV	11°, 31%, 71%
XYZ	31.4217, 28.6323, 23.2725
YIQ	147.6140, 30.6260, 6.6420

Conversions

Conversions Part 2

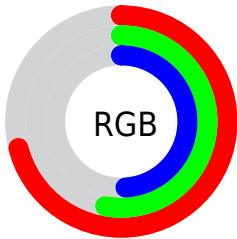
Format	Color
RYB	181, 137, 125
Decimal	11896701
CIELab	60.46, 16.17, 12.24
CIElCh	60, 20.284, 37.121
Yxy	28.6337, 0.3771, 0.3436
Android (android.graphics.Color)	4290086781 (0xFFB5877D)
YUV	147.6140, -11.1487, 29.2795
Hunter-Lab	53.5092, 11.1777, 11.6697

Details

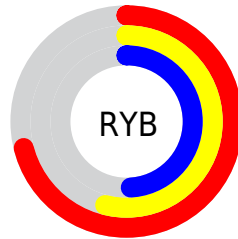
The HunterLab color **53.5092, 11.1777, 11.6697** is a dark color, and the websafe version is hex **CC9999**. A complement of this color would be **60.6801, -13.9389, -5.5678**, and the grayscale version is **54.2988, -2.8973, 2.9502**.

A 20% lighter version of the original color is **75.7350, 11.8923, 13.9021**, and **33.9571, 10.5168, 9.1699** is the 20% darker color. If you saturate the color by 10%, you get **49.3451, 16.5165, 14.0148**, and if you desaturate by 10%, it is **57.9497, 6.1122, 9.1866**.

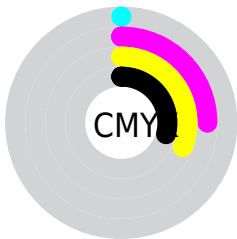
Distribution



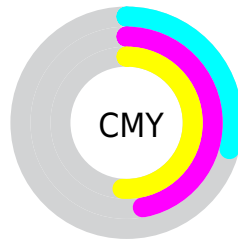
- Red (71%)
- Green (53%)
- Blue (49%)



- Red (71%)
- Yellow (54%)
- Blue (49%)



- Cyan (0%)
- Magenta (25%)
- Yellow (31%)
- Black (29%)



- Cyan (29%)
- Magenta (47%)
- Yellow (51%)

Brightness & Saturation Gradients

These gradients show how the HunterLab color 53.5092, 11.1777, 11.6697 changes by changing the brightness by 10 percent. The first figure shows a shift by +10% for each color and the second figure -10%.

Similar to the brightness gradients but the following saturation gradients show a change of the HunterLab color 53.5092, 11.1777, 11.6697 by changing the saturation by 10% instead.

■ 53.5092, 11.1777,
11.6697

■ 53.5092, 11.1777,
11.6697

171.8961, 10.9897,
22.9598

■ 43.3635, 10.8629,
10.4084

■ 75.8252, 11.5554,
14.1608

■ 33.9539, 10.4531,
9.1217

■ 87.9173, 11.6395,
15.4011

■ 25.3448, 9.9300,
7.7933

■ 100.5915, 11.6615,
16.6435

■ 17.6191, 9.2718,
6.3944

113.8223, 11.6264,
17.8907

■ 10.8924, 8.4492,
5.4221

127.5871, 11.5384,
19.1445

■ 2.2492, 31.2147,
1.5745

141.8659, 11.4010,

0.0000, NaN, NaN

20.4066

0.0000, NaN, NaN

156.6410, 11.2172,
21.6781

0.0000, NaN, NaN

■ 53.5092, 11.1777,
11.6697

■ 53.5092, 11.1777,
11.6697

■ 49.3451, 16.5165,
14.0148

■ 57.9497, 6.1122,
9.1866

■ 45.4975, 22.1111,
16.1631

■ 62.6258, 1.3222,
6.6026

■ 42.0186, 27.8879,
18.0392

■ 67.5083, -3.2135,
3.9457

■ 38.9648, 33.7045,
19.5478

■ 72.5721, -7.5200,
1.2342

■ 36.3932, 39.3282,
20.5862

■ 77.7964, -11.6243,
-1.5199

■ 34.3528, 44.4383,
21.0726

■ 83.1642, -15.5521,
-4.3086

■ 32.9770, 48.2828,
21.1656

■ 88.6611, -19.3270,
-7.1265

■ 93.7486, -25.9643,
-2.5204

■ 94.1083, -26.4808,
-2.0791

Harmonies

Analogous

The Analogous color harmony consists of three colors that are next to each other on the color wheel.



53.5105, 14.8131, 4.8520



53.5092, 11.1777, 11.6697



53.5105, 3.8168, 15.6205

Triad

The Triadic color harmony groups three colors that are evenly spaced from another and form a triangle on the color wheel.



53.5105, 11.1756, 11.6705



53.5105, -17.4436, 8.7492



53.5105, -0.7641, -15.4503

Complementary

The Complementary color scheme is a pair of colors which are on the opposite of each other on the color wheel.



53.5092, 11.1777, 11.6697



60.6801, -13.9389, -5.5678

Split Complementary

Split-complementary colors differ from the complementary color scheme. The scheme consists of three colors, the original color and two neighbors of the complement color.



53.5105, -9.2209, -13.9609



53.5092, 11.1777, 11.6697



53.5105, -18.4972, 0.8980

Square

The Square scheme is like the rectangle color scheme, but the four colors are evenly spaced on the color wheel.



53.5105, 11.1756, 11.6705



53.5105, -12.6038, 14.1319



53.5105, -15.5796, -7.6325



53.5105, 7.6392, -11.4268

Rectangle

The Rectangle color scheme consists of four colors that form a rectangle on the color wheel.



53.5092, 11.1777, 11.6697



53.5105, -2.0134, 16.5172



53.5105, -15.5796, -7.6325



53.5105, -3.6975, -15.5871

Sweetspot

The Sweet Spot groups the original color and five complimentary colors.



53.5105, 11.1756, 11.6705



84.9598, 0.6599, 8.2065



52.3995, 23.4560, -11.2737



39.0687, 0.7207, 4.0504



95.4677, -5.0939, 5.1869



42.2927, -2.2566, 2.2978

Same Dimension

The Same Dimension uses a secret algorithm to generate beautiful new colors.



53.5105, 11.1756, 11.6705



67.8442, 19.6899, 17.7388



61.0433, -2.3253, 18.7288



29.5680, 0.2646, 2.8794



27.5163, 39.6584, 17.6497



5.5854, 5.0152, 3.5295

Inverse Universe

The Inverse Universe completely reimagines the original color for something new.



60.6801, -13.9389, -5.5678



79.3500, -20.8299, -9.9710



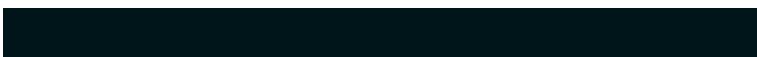
52.4806, -0.9560, -17.0667



30.6075, -3.3446, 0.3868



41.3968, -15.6637, -17.9289



7.7889, -3.3622, -2.4775

Previews

White Background



This preview shows how the HunterLab color 53.5092, 11.1777, 11.6697 looks on a white background.

Color Contrast Check

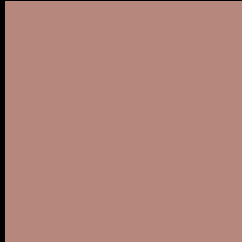
Large Text (above 18pt) WCAG AA ✓ Pass

Any Text WCAG AA × Fail

Large Text (above 18pt) WCAG AAA × Fail

Any Text WCAG AAA × Fail

Black Background



This preview shows how the HunterLab color 53.5092, 11.1777, 11.6697 looks on a black background.

Color Contrast Check

Large Text (above 18pt) WCAG AA ✓ Pass

Any Text WCAG AA ✓ Pass

Large Text (above 18pt) WCAG AAA ✓ Pass

Any Text WCAG AAA × Fail

If you want to check with other color combinations, try the [Color Contrast Checker](#).

HunterLab 53.5092, 11.1777, 11.6697 Background



This preview shows how black text looks on a background with the HunterLab color 53.5092, 11.1777, 11.6697.



This preview shows how white text looks on a background with the HunterLab color 53.5092, 11.1777, 11.6697.

Color Blindness Simulation

Color vision deficiency is a very complex topic, and I could not describe the different causes any better than Wikipedia does, so if you want to learn more, you should check out their [article about color blindness](#).

Dichromacy



Original Color

53.5092, 11.1777, 11.6697

Protanopia

53.7074, -3.3975, 9.7205

Deuteranopia

53.6934, 3.4803, 12.0902



Tritanopia

53.4350, 15.8491, 4.3698

Trichromacy



Original Color

53.5092, 11.1777, 11.6697

Protanomaly

53.5640, 1.8164, 10.4325

Deuteranomaly

53.6700, 6.2007, 12.1142

Tritanomaly

53.3833, 13.9900, 7.2696

Monochromacy



Original Color

53.5092, 11.1777, 11.6697

Achromatopsia

54.4186, -2.9036, 2.9567

Achromatomaly

53.8627, 2.0222, 5.9145

CSS Examples

Text

The CSS property to change the color of the text to HunterLab 53.5092, 11.1777, 11.6697 is called "color". The color property can be set on classes, ids or directly on the HTML element.

This example shows how text in the color `rgb(181, 135, 125)` looks like.

```
.text, #text, p{  
    color:rgb(181, 135, 125)  
}
```

If you want to add a text shadow in that color use the text-shadow property, you can generate a text shadow directly with our [CSS Text Shadow Generator](#).

Here you see how black text with a 4 pixel rgb(181, 135, 125) colored shadow looks like.

```
.shadow{ text-shadow: 4px 4px 2px rgb(181, 135, 125) }
```

Border

The CSS property to change the border of an element to HunterLab 53.5092, 11.1777, 11.6697 is called "border". The border property can be set on classes, ids or directly on the HTML element.

This example shows the color as border, it can be applied via the CSS property "border" or "border-color".

```
.border, #border, table{ border:4px solid rgb(181, 135, 125) }
```


If only the border color should be changed use the property `border-color`.

```
.border{ border-color:rgb(181, 135, 125) }
```

If you want to add a box shadow in that color use:

Here you see how a box with a 4 pixel `rgb(181, 135, 125)` colored shadow looks like.

```
.boxshadow{ -moz-box-shadow:4px 4px 4px  
4px rgb(181, 135, 125); -webkit-box-  
shadow:4px 4px 4px 4px rgb(181, 135, 125);  
box-shadow:4px 4px 4px 4px rgb(181, 135,  
125) }
```

Background

The CSS property to change the background color of an element to HunterLab 53.5092, 11.1777, 11.6697 is called "background". The background property can be set on classes, ids or directly on the HTML element.

```
.background, #background, body{  
background: rgb(181, 135, 125) }
```

If only the background color should be changed can be used:

```
.background{ background-color: rgb(181,  
135, 125) }
```

This example shows the color as background, it is applied via the CSS property "background".

To optimize and compress your CSS code, you can use our [online CSS compressor and optimizer](#) based on csstidy. If you want to create a linear or radial gradient as background or border, check our [CSS Gradient Generator](#).

Hey! You found this booklet interesting? Support Converting Colors with the new Membership Option!

The pro membership hides all ads, plus gives you double the colors in the color bucket, and more awesome pro features!

[Learn more, Memberships starting at \\$2.50/m!](#)

**Follow me
on Twitter!**

@ConvertingColor