

Converting Colors

HunterLab(53.6034, 14.7902,
14.9186)

Have a look what the booklet for
HunterLab(53.6034, 14.7902,
14.9186) contains.

HunterLab(53.5823, 14.9616, 14.9960)	3
<i>Conversions</i>	4
<i>Details</i>	6
<i>Harmonies</i>	12
<i>Previews</i>	24
<i>Color Blindness Simulation</i>	28
<i>CSS Examples</i>	31

Color

**HunterLab(53.5823, 14.9616,
14.9960)**

Conversions

Conversions Part 1

Format	Color
Hex	BE8474
RGB	190, 132, 116
RGB Percent	75%, 52%, 45%
CMY	0.2549, 0.4823, 0.5451
CMYK	0.00, 0.31, 0.39, 0.25
HSL	13°, 36%, 60%
HSV	13°, 39%, 75%
XYZ	32.6389, 28.7106, 20.3445
YIQ	147.5180, 39.7040, 7.3200

Conversions

Conversions Part 2

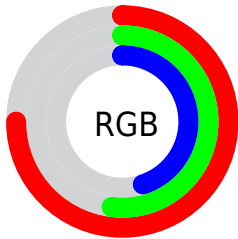
Format	Color
RYB	190, 136, 116
Decimal	12485748
CIELab	60.53, 20.28, 17.60
CIELCh	61, 26.855, 40.956
Yxy	28.7120, 0.3995, 0.3514
Android (android.graphics.Color)	4290675828 (0xFFBE8474)
YUV	147.5180, -15.5384, 37.2567
Hunter-Lab	53.5823, 14.9616, 14.9960

Details

The HunterLab color **53.5823, 14.9616, 14.9960** is a dark color, and the websafe version is hex **CC9999**. A complement of this color would be **61.4015, -15.4948, -9.4759**, and the grayscale version is **54.2748, -2.8960, 2.9489**.

A 20% lighter version of the original color is **75.8166, 15.9480, 18.0265**, and **34.0629, 14.0284, 11.7159** is the 20% darker color. If you saturate the color by 10%, you get **49.5575, 20.4934, 17.3652**, and if you desaturate by 10%, it is **57.9064, 9.7161, 12.3819**.

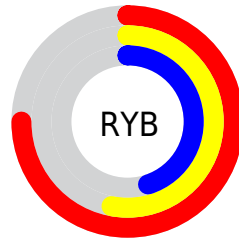
Distribution



Red (75%)

Green (52%)

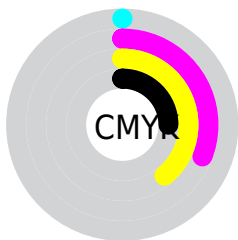
Blue (45%)



Red (75%)

Yellow (53%)

Blue (45%)

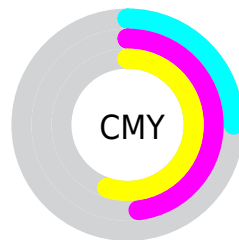


Cyan (0%)

Magenta (31%)

Yellow (39%)

Black (25%)



Cyan (25%)

Magenta (48%)

Yellow (55%)

Brightness & Saturation Gradients

These gradients show how the HunterLab color 53.5823, 14.9616, 14.9960 changes by changing the brightness by 10 percent. The first figure shows a shift by +10% for each color and the second figure -10%.

Similar to the brightness gradients but the following saturation gradients show a change of the HunterLab color 53.5823, 14.9616, 14.9960 by changing the saturation by 10% instead.

■ 53.5823, 14.9616,
14.9960

■ 53.5823, 14.9616,
14.9960

172.0040, 16.2553,
28.5596

■ 43.4316, 14.4471,
13.3932

■ 75.9073, 15.7118,
18.0946

■ 34.0167, 13.8281,
11.7310

■ 88.0036, 15.9711,
19.6097

■ 25.4018, 13.0854,
9.9825

■ 100.6817, 16.1617,
21.1117

■ 17.6696, 12.1979,
8.1025

113.9163, 16.2895,
22.6054

■ 10.9354, 11.1435,
7.4477

127.6848, 16.3590,
24.0944

■ 2.4145, 36.4728,
1.6902

141.9671, 16.3742,

0.0000, NaN, NaN

25.5817

0.0000, NaN, NaN

156.7456, 16.3387,
27.0695

0.0000, NaN, NaN

■ 53.5823, 14.9616,
14.9960

■ 53.5823, 14.9616,
14.9960

■ 49.5575, 20.4934,
17.3652

■ 57.9064, 9.7161,
12.3819

■ 45.8737, 26.2746,
19.4111

■ 62.4867, 4.7722,
9.5792

■ 42.5832, 32.2018,
21.0421

■ 67.2914, 0.1145,
6.6320

■ 39.7396, 38.0967,
22.1591

■ 72.2931, -4.2801,
3.5718

■ 37.3929, 43.6927,
22.6812

■ 77.4690, -8.4387,
0.4214

■ 35.5734, 48.6285,
22.6757

■ 82.8000, -12.3889,
-2.8031

■ 35.4110, 49.0865,
22.6794

■ 88.2703, -16.1565,
-6.0900

■ 93.4044, -22.3777,
-2.8902

■ 94.7033, -24.2830,
-1.2996

Harmonies

Analogous

The Analogous color harmony consists of three colors that are next to each other on the color wheel.



53.5836, 20.7264, 6.7777



53.5823, 14.9616, 14.9960



53.5836, 4.5774, 19.2878

Triad

The Triadic color harmony groups three colors that are evenly spaced from another and form a triangle on the color wheel.



53.5836, 14.9592, 14.9968



53.5836, -22.2770, 9.3612



53.5836, 1.4236, -22.2405

Complementary

The Complementary color scheme is a pair of colors which are on the opposite of each other on the color wheel.



53.5823, 14.9616, 14.9960



61.4015, -15.4948, -9.4759

Split Complementary

Split-complementary colors differ from the complementary color scheme. The scheme consists of three colors, the original color and two neighbors of the complement color.



53.5836, -9.9164, -21.1372



53.5823, 14.9616, 14.9960



53.5836, -22.9654, -1.2549

Square

The Square scheme is like the rectangle color scheme, but the four colors are evenly spaced on the color wheel.



53.5836, 14.9592, 14.9968



53.5836, -16.6534, 16.5421



53.5836, -18.6210, -12.8577



53.5836, 12.4829, -15.6128

Rectangle

The Rectangle color scheme consists of four colors that form a rectangle on the color wheel.



53.5823, 14.9616, 14.9960



53.5836, -3.2318, 20.0296



53.5836, -18.6210, -12.8577



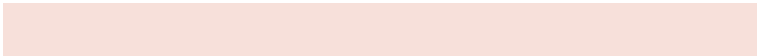
53.5836, -2.4911, -22.7921

Sweetspot

The Sweet Spot groups the original color and five complimentary colors.



53.5836, 14.9592, 14.9968



88.4538, 2.1499, 10.2346



51.5182, 31.9367, -14.4902



41.0473, 1.3933, 5.0430



98.8636, -5.2751, 5.3714



45.2661, -2.4153, 2.4594

Same Dimension

The Same Dimension uses a secret algorithm to generate beautiful new colors.



53.5836, 14.9592, 14.9968



67.3320, 26.6851, 23.0189



63.3559, -2.8152, 23.5274



31.4037, 0.1387, 3.1606



29.0419, 39.5134, 18.5872



6.5483, 5.5757, 4.1326

Inverse Universe

The Inverse Universe completely reimagines the original color for something new.



61.4015, -15.4948, -9.4759



79.9517, -22.9411, -16.6011



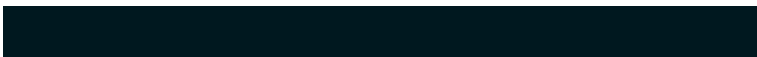
50.6611, 1.5926, -25.7677



32.3261, -3.4023, 0.2856



41.0661, -13.7237, -21.7035



8.6566, -3.4296, -3.4165

Previews

White Background



This preview shows how the HunterLab color 53.5823, 14.9616, 14.9960 looks on a white background.

Color Contrast Check

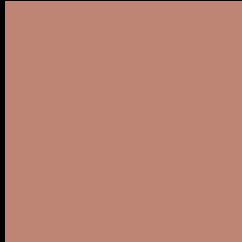
Large Text (above 18pt) WCAG AA ✓ Pass

Any Text WCAG AA × Fail

Large Text (above 18pt) WCAG AAA × Fail

Any Text WCAG AAA × Fail

Black Background



This preview shows how the HunterLab color 53.5823, 14.9616, 14.9960 looks on a black background.

Color Contrast Check

Large Text (above 18pt) WCAG AA ✓ Pass

Any Text WCAG AA ✓ Pass

Large Text (above 18pt) WCAG AAA ✓ Pass

Any Text WCAG AAA × Fail

If you want to check with other color combinations, try the [Color Contrast Checker](#).

HunterLab 53.5823, 14.9616, 14.9960 Background



This preview shows how black text looks on a background with the HunterLab color 53.5823, 14.9616, 14.9960.



This preview shows how white text looks on a background with the HunterLab color 53.5823, 14.9616, 14.9960.

Color Blindness Simulation

Color vision deficiency is a very complex topic, and I could not describe the different causes any better than Wikipedia does, so if you want to learn more, you should check out their [article about color blindness](#).

Dichromacy



Original Color

53.5823, 14.9616, 14.9960

Protanopia

53.7195, -3.6935, 12.3550

Deuteranopia

53.5061, 3.8107, 15.3964



Tritanopia

53.6387, 20.1059, 6.4043

Trichromacy



Original Color

53.5823, 14.9616, 14.9960

Protanomaly

53.4989, 2.6401, 13.3192

Deuteranomaly

53.4735, 7.9007, 15.1045

Tritanomaly

53.5540, 18.1562, 9.5450

Monochromacy



Original Color

53.5823, 14.9616, 14.9960

Achromatopsia

54.4186, -2.9036, 2.9567

Achromatomaly

53.7681, 2.9146, 7.4980

CSS Examples

Text

The CSS property to change the color of the text to HunterLab 53.5823, 14.9616, 14.9960 is called "color". The color property can be set on classes, ids or directly on the HTML element.

This example shows how text in the color `rgb(190, 132, 116)` looks like.

```
.text, #text, p{  
    color:rgb(190, 132, 116)  
}
```

If you want to add a text shadow in that color use the text-shadow property, you can generate a text shadow directly with our [CSS Text Shadow Generator](#).

Here you see how black text with a 4 pixel rgb(190, 132, 116) colored shadow looks like.

```
.shadow{ text-shadow: 4px 4px 2px rgb(190, 132, 116) }
```

Border

The CSS property to change the border of an element to HunterLab 53.5823, 14.9616, 14.9960 is called "border". The border property can be set on classes, ids or directly on the HTML element.

This example shows the color as border, it can be applied via the CSS property "border" or "border-color".

```
.border, #border, table{ border:4px solid rgb(190, 132, 116) }
```


If only the border color should be changed use the property `border-color`.

```
.border{ border-color:rgb(190, 132, 116) }
```

If you want to add a box shadow in that color use:

Here you see how a box with a 4 pixel `rgb(190, 132, 116)` colored shadow looks like.

```
.boxshadow{ -moz-box-shadow:4px 4px 4px 4px rgb(190, 132, 116); -webkit-box-shadow:4px 4px 4px 4px rgb(190, 132, 116); box-shadow:4px 4px 4px 4px rgb(190, 132, 116) }
```

Background

The CSS property to change the background color of an element to HunterLab 53.5823, 14.9616, 14.9960 is called "background". The background property can be set on classes, ids or directly on the HTML element.

```
.background, #background, body{  
background: rgb(190, 132, 116) }
```

If only the background color should be changed can be used:

```
.background{ background-color: rgb(190,  
132, 116) }
```

This example shows the color as background, it is applied via the CSS property "background".

To optimize and compress your CSS code, you can use our [online CSS compressor and optimizer](#) based on csstidy. If you want to create a linear or radial gradient as background or border, check our [CSS Gradient Generator](#).

Hey! You found this booklet interesting? Support Converting Colors with the new Membership Option!

The pro membership hides all ads, plus gives you double the colors in the color bucket, and more awesome pro features!

[Learn more, Memberships starting at \\$2.50/m!](#)

**Follow me
on Twitter!**

@ConvertingColor