

Converting Colors

HunterLab(53.7302, 9.9059,
6.3281)

Have a look what the booklet for
HunterLab(53.7302, 9.9059, 6.3281)
contains.

HunterLab(53.7302, 9.9059, 6.3281)	3
<i>Conversions</i>	4
<i>Details</i>	6
<i>Harmonies</i>	12
<i>Previews</i>	24
<i>Color Blindness Simulation</i>	28
<i>CSS Examples</i>	31

Color

**HunterLab(53.7302, 9.9059,
6.3281)**

Conversions

Conversions Part 1

Format	Color
Hex	AF898B
RGB	175, 137, 139
RGB Percent	69%, 54%, 55%
CMY	0.3137, 0.4627, 0.4549
CMYK	0.00, 0.22, 0.21, 0.31
HSL	357°, 19%, 61%
HSV	357°, 22%, 69%
XYZ	31.2850, 28.8693, 28.3495
YIQ	148.5900, 22.0060, 8.6780

Conversions

Conversions Part 2

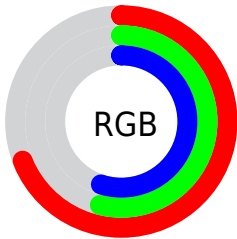
Format	Color
R_{YB}	175, 137, 139
Decimal	11504011
CIE _{Lab}	60.67, 14.77, 4.47
CIE _{LCh}	61, 15.429, 16.857
Yxy	28.8707, 0.3535, 0.3262
Android (android.graphics.Color)	4289694091 (0xFFAF898B)
YUV	148.5900, -4.7279, 23.1616
Hunter-Lab	53.7302, 9.9059, 6.3281

Details

The HunterLab color $53.7302, 9.9059, 6.3281$ is a dark color, and the websafe version is hex $CC9999$. A complement of this color would be $62.4469, -14.4094, 0.6889$, and the grayscale version is $54.6697, -2.9170, 2.9703$.

A 20% lighter version of the original color is $76.1947, 9.7978, 8.3172$, and $34.1690, 9.3567, 4.8189$ is the 20% darker color. If you saturate the color by 10%, you get $48.8299, 16.4470, 7.8539$, and if you desaturate by 10%, it is $58.9730, 3.5940, 4.9668$.

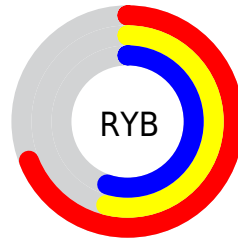
Distribution



Red (69%)

Green (54%)

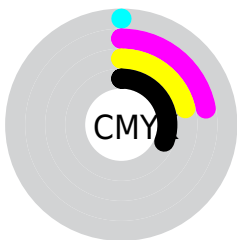
Blue (55%)



Red (69%)

Yellow (54%)

Blue (55%)

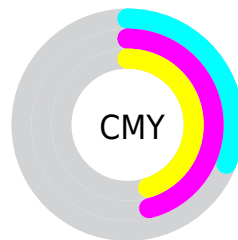


Cyan (0%)

Magenta (22%)

Yellow (21%)

Black (31%)



Cyan (31%)

Magenta (46%)

Yellow (45%)

Brightness & Saturation Gradients

These gradients show how the HunterLab color 53.7302, 9.9059, 6.3281 changes by changing the brightness by 10 percent. The first figure shows a shift by +10% for each color and the second figure -10%.

Similar to the brightness gradients but the following saturation gradients show a change of the HunterLab color 53.7302, 9.9059, 6.3281 by changing the saturation by 10% instead.

■ 53.7302, 9.9059,
6.3281

■ 53.7302, 9.9059,
6.3281

172.2220, 9.1913,
14.4872

■ 43.5695, 9.6634,
5.5298

■ 76.0733, 10.1502,
7.9906

■ 34.1438, 9.3299,
4.7501

■ 88.1780, 10.1718,
8.8540

■ 25.5172, 8.8878,
3.9869

■ 100.8641, 10.1338,
9.7392

■ 17.7718, 8.3157,
3.2348

114.1064, 10.0409,
10.6462

■ 11.0225, 7.5836,
2.4817

127.8822, 9.8971,
11.5748

■ 2.7180, 23.5273,
1.9026

142.1717, 9.7057,

0.0000, NaN, NaN

12.5247

0.0000, NaN, NaN

156.9570, 9.4696,
13.4956

0.0000, NaN, NaN

■ 53.7302, 9.9059,
6.3281

■ 53.7302, 9.9059,
6.3281

■ 48.8299, 16.4470,
7.8539

■ 58.9730, 3.5940,
4.9668

■ 44.3338, 23.1705,
9.5464

■ 64.5023, -2.4771,
3.7519

■ 40.3223, 29.9385,
11.3892

■ 70.2777, -8.3263,
2.6657

■ 36.8858, 36.4873,
13.3250

■ 76.2661, -13.9799,
1.6899

■ 34.1168, 42.3990,
15.2408

■ 82.4413, -19.4658,
0.8077

■ 32.0892, 47.1458,
16.9683

■ 88.7820, -24.8109,
0.0048

■ 30.8276, 50.2603,
18.3230

■ 93.7305, -27.8843,
-2.5768

■ 30.2228, 51.8241,
19.0123

Harmonies

Analogous

The Analogous color harmony consists of three colors that are next to each other on the color wheel.



53.7314, 10.1379, 0.0889



53.7302, 9.9059, 6.3281



53.7314, 6.1432, 11.0538

Triad

The Triadic color harmony groups three colors that are evenly spaced from another and form a triangle on the color wheel.



53.7314, 9.9040, 6.3290



53.7314, -11.8725, 10.5853



53.7314, -5.7425, -10.2986

Complementary

The Complementary color scheme is a pair of colors which are on the opposite of each other on the color wheel.



53.7302, 9.9059, 6.3281



62.4469, -14.4094, 0.6889

Split Complementary

Split-complementary colors differ from the complementary color scheme. The scheme consists of three colors, the original color and two neighbors of the complement color.



53.7314, -11.3254, -6.7138



53.7302, 9.9059, 6.3281



53.7314, -14.7470, 5.6140

Square

The Square scheme is like the rectangle color scheme, but the four colors are evenly spaced on the color wheel.



53.7314, 9.9040, 6.3290



53.7314, -6.5225, 13.2989



53.7314, -14.5517, -0.7179



53.7314, 0.8831, -10.0464

Rectangle

The Rectangle color scheme consists of four colors that form a rectangle on the color wheel.



53.7302, 9.9059, 6.3281



53.7314, 2.2412, 12.9376



53.7314, -14.5517, -0.7179



53.7314, -7.7967, -9.4856

Sweetspot

The Sweet Spot groups the original color and five complimentary colors.



53.7314, 9.9040, 6.3290



82.2747, 1.0409, 5.8775



54.5998, 14.9516, -10.1358



38.5866, 0.7131, 2.8156



94.3401, -5.0338, 5.1257



41.3092, -2.2042, 2.2444

Same Dimension

The Same Dimension uses a secret algorithm to generate beautiful new colors.



53.7314, 9.9040, 6.3290



68.7379, 17.3657, 9.4086



58.1865, 1.4429, 11.7621



28.3230, 0.9898, 2.1897



25.5815, 43.8768, 16.0051



4.2920, 7.4117, 2.2960

Inverse Universe

The Inverse Universe completely reimagines the original color for something new.



53.7314, 9.9040, 6.3290



68.7379, 17.3657, 9.4086



57.4897, -6.3001, -6.5131



28.3230, 0.9898, 2.1897



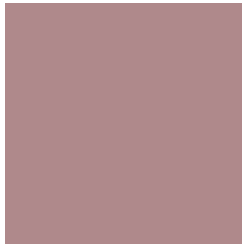
25.5815, 43.8768, 16.0051



4.2920, 7.4117, 2.2960

Previews

White Background



This preview shows how the HunterLab color 53.7302, 9.9059, 6.3281 looks on a white background.

Color Contrast Check

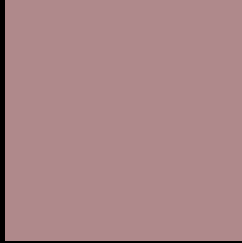
Large Text (above 18pt) WCAG AA ✓ Pass

Any Text WCAG AA × Fail

Large Text (above 18pt) WCAG AAA × Fail

Any Text WCAG AAA × Fail

Black Background



This preview shows how the HunterLab color 53.7302, 9.9059, 6.3281 looks on a black background.

Color Contrast Check

Large Text (above 18pt) WCAG AA ✓ Pass

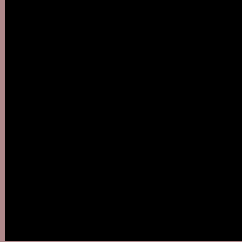
Any Text WCAG AA ✓ Pass

Large Text (above 18pt) WCAG AAA ✓ Pass

Any Text WCAG AAA × Fail

If you want to check with other color combinations, try the [Color Contrast Checker](#).

HunterLab 53.7302, 9.9059, 6.3281 Background



This preview shows how black text looks on a background with the HunterLab color 53.7302, 9.9059, 6.3281.



This preview shows how white text looks on a background with the HunterLab color 53.7302, 9.9059,

Color Blindness Simulation

Color vision deficiency is a very complex topic, and I could not describe the different causes any better than Wikipedia does, so if you want to learn more, you should check out their [article about color blindness](#).

Dichromacy



Original Color

53.7302, 9.9059, 6.3281

Protanopia

53.9031, -1.9707, 4.1579

Deuteranopia

53.9198, 3.5318, 6.8475



Tritanopia

53.7715, 11.7851, 3.3550

Trichromacy



Original Color

53.7302, 9.9059, 6.3281

Protanomaly

53.8227, 1.9971, 5.0095

Deuteranomaly

53.7736, 5.8588, 6.7262

Tritanomaly

53.6857, 11.3383, 4.5801

Monochromacy



Original Color

53.7302, 9.9059, 6.3281

Achromatopsia

54.8219, -2.9252, 2.9786

Achromatomaly

54.3730, 1.1564, 4.3141

CSS Examples

Text

The CSS property to change the color of the text to HunterLab 53.7302, 9.9059, 6.3281 is called "color". The color property can be set on classes, ids or directly on the HTML element.

This example shows how text in the color `rgb(175, 137, 139)` looks like.

```
.text, #text, p{  
    color:rgb(175, 137, 139)  
}
```

If you want to add a text shadow in that color use the text-shadow property, you can generate a text shadow directly with our [CSS Text Shadow Generator](#).

Here you see how black text with a 4 pixel rgb(175, 137, 139) colored shadow looks like.

```
.shadow{ text-shadow: 4px 4px 2px rgb(175, 137, 139) }
```

Border

The CSS property to change the border of an element to HunterLab 53.7302, 9.9059, 6.3281 is called "border". The border property can be set on classes, ids or directly on the HTML element.

This example shows the color as border, it can be applied via the CSS property "border" or "border-color".

```
.border, #border, table{ border:4px solid rgb(175, 137, 139) }
```


If only the border color should be changed use the property `border-color`.

```
.border{ border-color:rgb(175, 137, 139) }
```

If you want to add a box shadow in that color use:

Here you see how a box with a 4 pixel `rgb(175, 137, 139)` colored shadow looks like.

```
.boxshadow{ -moz-box-shadow:4px 4px 4px  
4px rgb(175, 137, 139); -webkit-box-  
shadow:4px 4px 4px 4px rgb(175, 137, 139);  
box-shadow:4px 4px 4px 4px rgb(175, 137,  
139) }
```

Background

The CSS property to change the background color of an element to HunterLab 53.7302, 9.9059, 6.3281 is called "background". The background property can be set on classes, ids or directly on the HTML element.

```
.background, #background, body{  
background: rgb(175, 137, 139) }
```

If only the background color should be changed can be used:

```
.background{ background-color: rgb(175,  
137, 139) }
```

This example shows the color as background, it is applied via the CSS property "background".

To optimize and compress your CSS code, you can use our [online CSS compressor and optimizer](#) based on csstidy. If you want to create a linear or radial gradient as background or border, check our [CSS Gradient Generator](#).

Hey! You found this booklet interesting? Support Converting Colors with the new Membership Option!

The pro membership hides all ads, plus gives you double the colors in the color bucket, and more awesome pro features!

[Learn more, Memberships starting at \\$2.50/m!](#)

**Follow me
on Twitter!**

@ConvertingColor