

Converting Colors

HunterLab(53.7710, 11.1251,
8.4591)

Have a look what the booklet for
HunterLab(53.7710, 11.1251,
8.4591) contains.

HunterLab(53.7710, 11.1251, 8.4591)	3
<i>Conversions</i>	4
<i>Details</i>	6
<i>Harmonies</i>	12
<i>Previews</i>	24
<i>Color Blindness Simulation</i>	28
<i>CSS Examples</i>	31

Color

**HunterLab(53.7710, 11.1251,
8.4591)**

Conversions

Conversions Part 1

Format	Color
Hex	B38886
RGB	179, 136, 134
RGB Percent	70%, 53%, 53%
CMY	0.2980, 0.4666, 0.4745
CMYK	0.00, 0.24, 0.25, 0.30
HSL	3°, 23%, 61%
HSV	3°, 25%, 70%
XYZ	31.6976, 28.9132, 26.4643
YIQ	148.6290, 26.2700, 8.4940

Conversions

Conversions Part 2

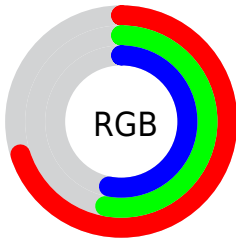
Format	Color
RYB	179, 136, 134
Decimal	11765894
CIELab	60.71, 16.11, 7.44
CIElCh	61, 17.743, 24.781
Yxy	28.9145, 0.3640, 0.3321
Android (android.graphics.Color)	4289955974 (0xFFB38886)
YUV	148.6290, -7.2121, 26.6354
Hunter-Lab	53.7710, 11.1251, 8.4591

Details

The HunterLab color **53.7710, 11.1251, 8.4591** is a light color, and the websafe version is hex **CC9999**. A complement of this color would be **63.0603, -14.9923, -1.5031**, and the grayscale version is **54.6939, -2.9183, 2.9716**.

A 20% lighter version of the original color is **75.9244, 11.5512, 10.2731**, and **34.1404, 10.2392, 6.6502** is the 20% darker color. If you saturate the color by 10%, you get **49.0074, 17.4376, 10.4764**, and if you desaturate by 10%, it is **58.8771, 5.0728, 6.4974**.

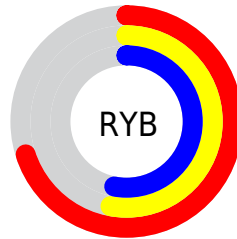
Distribution



Red (70%)

Green (53%)

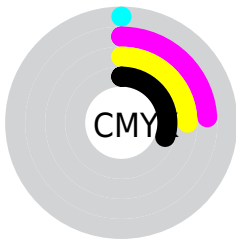
Blue (53%)



Red (70%)

Yellow (53%)

Blue (53%)

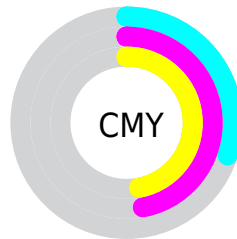


Cyan (0%)

Magenta (24%)

Yellow (25%)

Black (30%)



Cyan (30%)

Magenta (47%)

Yellow (47%)

Brightness & Saturation Gradients

These gradients show how the HunterLab color 53.7710, 11.1251, 8.4591 changes by changing the brightness by 10 percent. The first figure shows a shift by +10% for each color and the second figure -10%.

Similar to the brightness gradients but the following saturation gradients show a change of the HunterLab color 53.7710, 11.1251, 8.4591 by changing the saturation by 10% instead.

■ 53.7710, 11.1251,
8.4591

■ 53.7710, 11.1251,
8.4591

172.2822, 10.9007,
17.7896

■ 43.6076, 10.8159,
7.4893

■ 76.1192, 11.4932,
10.4299

■ 34.1789, 10.4121,
6.5223

■ 88.2261, 11.5728,
11.4340

■ 25.5490, 9.8957,
5.5513

■ 100.9145, 11.5907,
12.4528

■ 17.8000, 9.2449,
4.5626

114.1588, 11.5516,
13.4872

■ 11.0466, 8.4307,
3.5968

127.9367, 11.4598,
14.5378

■ 2.7960, 24.9568,
1.9572

142.2281, 11.3188,

0.0000, NaN, NaN

15.6049

0.0000, NaN, NaN

157.0153, 11.1315,
16.6888

0.0000, NaN, NaN

■ 53.7710, 11.1251,
8.4591

■ 53.7710, 11.1251,
8.4591

■ 49.0074, 17.4376,
10.4764

■ 58.8771, 5.0728,
6.4974

■ 44.6459, 23.9665,
12.5186

■ 64.2704, -0.7094,
4.5986

■ 40.7634, 30.5800,
14.5299

■ 69.9110, -6.2424,
2.7638

■ 37.4447, 37.0275,
16.4136

■ 75.7658, -11.5545,
0.9883

■ 34.7745, 42.9159,
18.0318

■ 81.8084, -16.6757,
-0.7347

■ 32.8182, 47.7507,
19.2285

■ 88.0175, -21.6348,
-2.4123

■ 31.5940, 51.0828,
19.8935

■ 93.9807, -26.9542,
-2.2470

■ 31.2358, 52.0687,
20.1589

Harmonies

Analogous

The Analogous color harmony consists of three colors that are next to each other on the color wheel.



53.7722, 12.5499, 1.6404



53.7710, 11.1251, 8.4591



53.7722, 5.8631, 13.1358

Triad

The Triadic color harmony groups three colors that are evenly spaced from another and form a triangle on the color wheel.



53.7722, 11.1231, 8.4600



53.7722, -14.3525, 10.3771



53.7722, -4.2016, -12.9284

Complementary

The Complementary color scheme is a pair of colors which are on the opposite of each other on the color wheel.



53.7710, 11.1251, 8.4591



63.0603, -14.9923, -1.5031

Split Complementary

Split-complementary colors differ from the complementary color scheme. The scheme consists of three colors, the original color and two neighbors of the complement color.



53.7722, -11.0828, -9.7839



53.7710, 11.1251, 8.4591



53.7722, -16.7307, 4.1825

Square

The Square scheme is like the rectangle color scheme, but the four colors are evenly spaced on the color wheel.



53.7722, 11.1231, 8.4600



53.7722, -8.8907, 14.1296



53.7722, -15.5677, -3.2647



53.7722, 3.4236, -11.3660

Rectangle

The Rectangle color scheme consists of four colors that form a rectangle on the color wheel.



53.7710, 11.1251, 8.4591



53.7722, 1.0381, 14.7386



53.7722, -15.5677, -3.2647



53.7722, -6.6736, -12.3752

Sweetspot

The Sweet Spot groups the original color and five complimentary colors.



53.7722, 11.1231, 8.4600



83.8120, 1.3323, 6.9063



54.6154, 19.1453, -11.4505



38.9378, 1.1691, 3.4290



95.4677, -5.0939, 5.1869



42.2927, -2.2566, 2.2978

Same Dimension

The Same Dimension uses a secret algorithm to generate beautiful new colors.



53.7722, 11.1231, 8.4600



68.4776, 19.3798, 12.7629



59.7987, 0.1875, 14.4883



29.2642, 0.7911, 2.5421



26.3063, 43.6055, 16.9732



4.8758, 7.0508, 3.1279

Inverse Universe

The Inverse Universe completely reimagines the original color for something new.



63.0603, -14.9923, -1.5031



83.4070, -22.7625, -3.2992



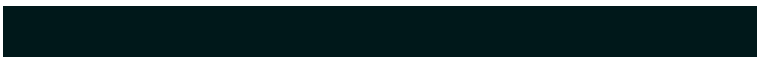
56.3613, -4.6027, -10.2151



30.9280, -3.8567, 0.7662



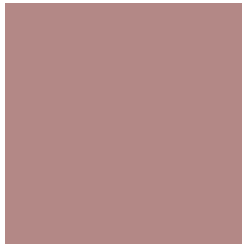
47.8702, -23.8967, -8.2474



8.6068, -4.3787, -1.3054

Previews

White Background



This preview shows how the HunterLab color 53.7710, 11.1251, 8.4591 looks on a white background.

Color Contrast Check

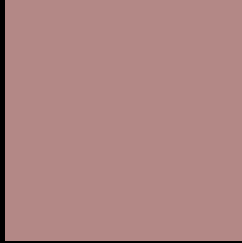
Large Text (above 18pt) WCAG AA ✓ Pass

Any Text WCAG AA × Fail

Large Text (above 18pt) WCAG AAA × Fail

Any Text WCAG AAA × Fail

Black Background



This preview shows how the HunterLab color 53.7710, 11.1251, 8.4591 looks on a black background.

Color Contrast Check

Large Text (above 18pt) WCAG AA ✓ Pass

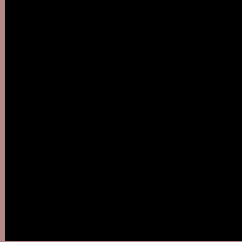
Any Text WCAG AA ✓ Pass

Large Text (above 18pt) WCAG AAA ✓ Pass

Any Text WCAG AAA × Fail

If you want to check with other color combinations, try the [Color Contrast Checker](#).

HunterLab 53.7710, 11.1251, 8.4591 Background



This preview shows how black text looks on a background with the HunterLab color 53.7710, 11.1251, 8.4591.



This preview shows how white text looks on a background with the HunterLab color 53.7710, 11.1251, 8.4591.

8.4591.

Color Blindness Simulation

Color vision deficiency is a very complex topic, and I could not describe the different causes any better than Wikipedia does, so if you want to learn more, you should check out their [article about color blindness](#).

Dichromacy



Original Color

53.7710, 11.1251, 8.4591

Protanopia

53.8527, -2.4227, 6.2491

Deuteranopia

53.7124, 3.9875, 8.6725



Tritanopia

53.6636, 14.0540, 3.7166

Trichromacy



Original Color

53.7710, 11.1251, 8.4591

Protanomaly

53.5996, 2.3991, 6.8904

Deuteranomaly

53.6811, 6.6812, 8.6862

Tritanomaly

53.8092, 12.9622, 5.6179

Monochromacy



Original Color

53.7710, 11.1251, 8.4591

Achromatopsia

54.8219, -2.9252, 2.9786

Achromatomaly

54.2529, 2.1318, 4.6323

CSS Examples

Text

The CSS property to change the color of the text to HunterLab 53.7710, 11.1251, 8.4591 is called "color". The color property can be set on classes, ids or directly on the HTML element.

This example shows how text in the color `rgb(179, 136, 134)` looks like.

```
.text, #text, p{  
    color:rgb(179, 136, 134)  
}
```

If you want to add a text shadow in that color use the text-shadow property, you can generate a text shadow directly with our [CSS Text Shadow Generator](#).

Here you see how black text with a 4 pixel rgb(179, 136, 134) colored shadow looks like.

```
.shadow{ text-shadow: 4px 4px 2px rgb(179, 136, 134) }
```

Border

The CSS property to change the border of an element to HunterLab 53.7710, 11.1251, 8.4591 is called "border". The border property can be set on classes, ids or directly on the HTML element.

This example shows the color as border, it can be applied via the CSS property "border" or "border-color".

```
.border, #border, table{ border:4px solid rgb(179, 136, 134) }
```


If only the border color should be changed use the property `border-color`.

```
.border{ border-color:rgb(179, 136, 134) }
```

If you want to add a box shadow in that color use:

Here you see how a box with a 4 pixel `rgb(179, 136, 134)` colored shadow looks like.

```
.boxshadow{ -moz-box-shadow:4px 4px 4px  
4px rgb(179, 136, 134); -webkit-box-  
shadow:4px 4px 4px 4px rgb(179, 136, 134);  
box-shadow:4px 4px 4px 4px rgb(179, 136,  
134) }
```

Background

The CSS property to change the background color of an element to HunterLab 53.7710, 11.1251, 8.4591 is called "background". The background property can be set on classes, ids or directly on the HTML element.

```
.background, #background, body{  
background: rgb(179, 136, 134) }
```

If only the background color should be changed can be used:

```
.background{ background-color: rgb(179,  
136, 134) }
```

This example shows the color as background, it is applied via the CSS property "background".

To optimize and compress your CSS code, you can use our [online CSS compressor and optimizer](#) based on csstidy. If you want to create a linear or radial gradient as background or border, check our [CSS Gradient Generator](#).

Hey! You found this booklet interesting? Support Converting Colors with the new Membership Option!

The pro membership hides all ads, plus gives you double the colors in the color bucket, and more awesome pro features!

[Learn more, Memberships starting at \\$2.50/m!](#)

**Follow me
on Twitter!**

@ConvertingColor