

Converting Colors

HunterLab(53.8153, 49.5756,
-0.8793)

Have a look what the booklet for
HunterLab(53.8153, 49.5756,
-0.8793) contains.

HunterLab(53.8451, 49.4765, -1.0786)	3
<i>Conversions</i>	4
<i>Details</i>	6
<i>Harmonies</i>	12
<i>Previews</i>	24
<i>Color Blindness Simulation</i>	28
<i>CSS Examples</i>	31

Color

**HunterLab(53.8451, 49.4765,
-1.0786)**

Conversions

Conversions Part 1

Format	Color
Hex	E5689D
RGB	229, 104, 157
RGB Percent	90%, 41%, 62%
CMY	0.1020, 0.5921, 0.3843
CMYK	0.00, 0.55, 0.31, 0.10
HSL	335°, 71%, 65%
HSV	335°, 55%, 90%
XYZ	43.3492, 28.9929, 35.2097
YIQ	147.4170, 57.4870, 42.9830

Conversions

Conversions Part 2

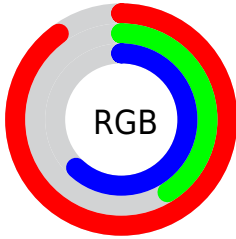
Format	Color
R_{YB}	229, 104, 157
Decimal	15034525
CIE _{Lab}	60.78, 53.94, -4.90
CIE _{LCh}	61, 54.164, 354.805
Y _{xy}	28.9944, 0.4031, 0.2696
Android (android.graphics.Color)	4293224605 (0xFFE5689D)
YUV	147.4170, 4.7244, 71.5483
Hunter-Lab	53.8451, 49.4765, -1.0786

Details

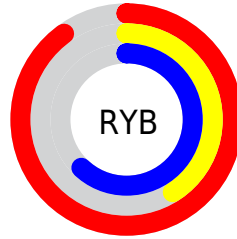
The HunterLab color **53.8451, 49.4765, -1.0786** is a light color, and the websafe version is hex **CC6699**. A complement of this color would be **78.8144, -43.7853, 16.8968**, and the grayscale version is **54.1504, -2.8893, 2.9421**.

A 20% lighter version of the original color is **71.2456, 39.1643, -6.6994**, and **34.2061, 45.7385, -1.7566** is the 20% darker color. If you saturate the color by 10%, you get **49.5647, 58.3351, 0.0912**, and if you desaturate by 10%, it is **58.9256, 39.7524, -1.3554**.

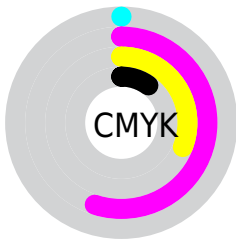
Distribution



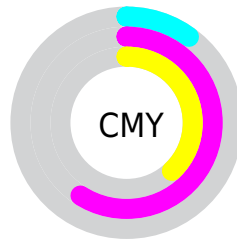
- Red (90%)
- Green (41%)
- Blue (62%)



- Red (90%)
- Yellow (41%)
- Blue (62%)



- Cyan (0%)
- Magenta (55%)
- Yellow (31%)
- Black (10%)



- Cyan (10%)
- Magenta (59%)
- Yellow (38%)

Brightness & Saturation Gradients

These gradients show how the HunterLab color 53.8451, 49.4765, -1.0786 changes by changing the brightness by 10 percent. The first figure shows a shift by +10% for each color and the second figure -10%.

Similar to the brightness gradients but the following saturation gradients show a change of the HunterLab color 53.8451, 49.4765, -1.0786 by changing the saturation by 10% instead.

■ 53.8451, 49.4765,
-1.0786

■ 53.8451, 49.4765,
-1.0786

172.3916, 61.6963,
3.5921

■ 43.6768, 47.6240,
-1.3812

■ 76.2025, 52.8492,
-0.3183

■ 34.2427, 45.6760,
-1.6276

■ 88.3136, 54.3804,
0.1286

■ 25.6069, 43.6616,
-1.8088

■ 101.0060, 55.8136,
0.6164

■ 17.8514, 41.6784,
-1.9143

■ 114.2542, 57.1544,
1.1425

■ 11.0904, 40.0398,
-1.9288

128.0357, 58.4082,
1.7048

■ 2.9323, 88.0214,
-6.7726

142.3307, 59.5800,

0.0000, INF, NaN

2.3016

0.0000, NaN, NaN

157.1214, 60.6747,
2.9311

0.0000, NaN, NaN

■ 53.8451, 49.4765,
-1.0786

■ 53.8451, 49.4765,
-1.0786

■ 49.5647, 58.3351,
0.0912

■ 58.9256, 39.7524,
-1.3554

■ 46.1881, 65.6695,
2.2205

■ 64.6870, 29.6703,
-0.8744

■ 43.7866, 70.7801,
5.2530

■ 71.0244, 19.5386,
0.2244

■ 42.3500, 73.2408,
8.9545

■ 77.8475, 9.5252,
1.8150

■ 41.8602, 73.7526,
11.0360

■ 85.0821, -0.2950,
3.7948

■ 92.6685, -9.9008,
6.0839

■ 97.4878, -14.5572,
5.1419

■ 97.6719, -13.5318,
2.5181

Harmonies

Analogous

The Analogous color harmony consists of three colors that are next to each other on the color wheel.



53.8465, 38.9020, -27.9182



53.8451, 49.4765, -1.0786



53.8465, 44.1908, 17.9356

Triad

The Triadic color harmony groups three colors that are evenly spaced from another and form a triangle on the color wheel.



53.8465, 49.4732, -1.0773



53.8465, -20.4323, 29.0593



53.8465, -26.3671, -44.8988

Complementary

The Complementary color scheme is a pair of colors which are on the opposite of each other on the color wheel.



53.8451, 49.4765, -1.0786



78.8144, -43.7853, 16.8968

Split Complementary

Split-complementary colors differ from the complementary color scheme. The scheme consists of three colors, the original color and two neighbors of the complement color.



53.8465, -37.8440, -18.2198



53.8451, 49.4765, -1.0786



53.8465, -34.8483, 22.1805

Square

The Square scheme is like the rectangle color scheme, but the four colors are evenly spaced on the color wheel.



53.8465, 49.4732, -1.0773



53.8465, 1.2457, 30.4619



53.8465, -40.6623, 6.6530



53.8465, -6.8774, -59.2331

Rectangle

The Rectangle color scheme consists of four colors that form a rectangle on the color wheel.



53.8451, 49.4765, -1.0786



53.8465, 32.7886, 25.1638



53.8465, -40.6623, 6.6530



53.8465, -31.1491, -36.6429

Sweetspot

The Sweet Spot groups the original color and five complimentary colors.



53.8465, 49.4732, -1.0773



86.7480, 12.4590, 1.7479



49.6530, 45.1726, -57.1295



39.3832, 6.8434, 0.6248

0.0000, NaN, NaN



46.2646, -2.4686, 2.5136

Same Dimension

The Same Dimension uses a secret algorithm to generate beautiful new colors.



53.8465, 49.4732, -1.0773



55.6488, 66.6418, 0.2558



54.1490, 39.2203, 19.7108



38.0380, 2.0839, 1.3005



31.6885, 55.9000, 7.8210



8.7195, 15.5801, 0.6131

Inverse Universe

The Inverse Universe completely reimagines the original color for something new.



53.8465, 49.4732, -1.0773



55.6488, 66.6418, 0.2558



77.5487, -30.7000, -9.4277



38.0380, 2.0839, 1.3005



31.6885, 55.9000, 7.8210



8.7195, 15.5801, 0.6131

Previews

White Background



This preview shows how the HunterLab color 53.8451, 49.4765, -1.0786 looks on a white background.

Color Contrast Check

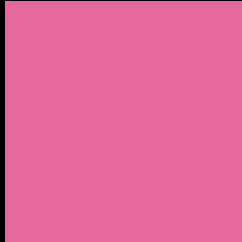
Large Text (above 18pt) WCAG AA ✓ Pass

Any Text WCAG AA × Fail

Large Text (above 18pt) WCAG AAA × Fail

Any Text WCAG AAA × Fail

Black Background



This preview shows how the HunterLab color 53.8451, 49.4765, -1.0786 looks on a black background.

Color Contrast Check

Large Text (above 18pt) WCAG AA ✓ Pass

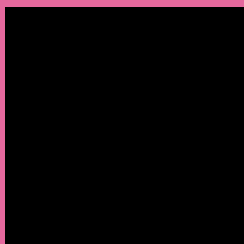
Any Text WCAG AA ✓ Pass

Large Text (above 18pt) WCAG AAA ✓ Pass

Any Text WCAG AAA × Fail

If you want to check with other color combinations, try the [Color Contrast Checker](#).

HunterLab 53.8451, 49.4765, -1.0786 Background



This preview shows how black text looks on a background with the HunterLab color 53.8451, 49.4765, -1.0786.



This preview shows how white text looks on a background with the HunterLab color 53.8451, 49.4765, -1.0786.

-1.0786.

Color Blindness Simulation

Color vision deficiency is a very complex topic, and I could not describe the different causes any better than Wikipedia does, so if you want to learn more, you should check out their [article about color blindness](#).

Dichromacy



Original Color

53.8451, 49.4765, -1.0786

Protanopia

54.2418, 1.8659, -16.1116

Deuteranopia

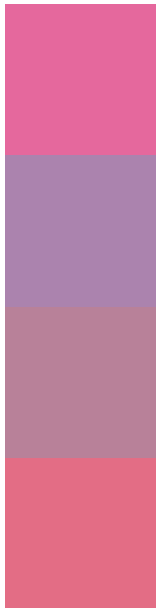
54.0835, 3.3987, 1.2888



Tritanopia

53.9342, 39.6136, 14.7417

Trichromacy



Original Color

53.8451, 49.4765, -1.0786

Protanomaly

52.8645, 17.3971, -12.0323

Deuteranomaly

53.0950, 19.2609, -0.5992

Tritanomaly

53.8160, 43.0763, 9.4679

Monochromacy



Original Color

53.8451, 49.4765, -1.0786

Achromatopsia

54.0158, -2.8821, 2.9348

Achromatomaly

52.7391, 15.4506, -0.1469

CSS Examples

Text

The CSS property to change the color of the text to HunterLab 53.8451, 49.4765, -1.0786 is called "color". The color property can be set on classes, ids or directly on the HTML element.

This example shows how text in the color `rgb(229, 104, 157)` looks like.

```
.text, #text, p{  
    color:rgb(229, 104, 157)  
}
```

If you want to add a text shadow in that color use the text-shadow property, you can generate a text shadow directly with our [CSS Text Shadow Generator](#).

Here you see how black text with a 4 pixel rgb(229, 104, 157) colored shadow looks like.

```
.shadow{ text-shadow: 4px 4px 2px rgb(229, 104, 157) }
```

Border

The CSS property to change the border of an element to HunterLab 53.8451, 49.4765, -1.0786 is called "border". The border property can be set on classes, ids or directly on the HTML element.

This example shows the color as border, it can be applied via the CSS property "border" or "border-color".

```
.border, #border, table{ border:4px solid rgb(229, 104, 157) }
```


If only the border color should be changed use the property `border-color`.

```
.border{ border-color:rgb(229, 104, 157) }
```

If you want to add a box shadow in that color use:

Here you see how a box with a 4 pixel `rgb(229, 104, 157)` colored shadow looks like.

```
.boxshadow{ -moz-box-shadow:4px 4px 4px  
4px rgb(229, 104, 157); -webkit-box-  
shadow:4px 4px 4px 4px rgb(229, 104, 157);  
box-shadow:4px 4px 4px 4px rgb(229, 104,  
157) }
```

Background

The CSS property to change the background color of an element to HunterLab 53.8451, 49.4765, -1.0786 is called "background". The background property can be set on classes, ids or directly on the HTML element.

```
.background, #background, body{  
background: rgb(229, 104, 157) }
```

If only the background color should be changed can be used:

```
.background{ background-color: rgb(229,  
104, 157) }
```

This example shows the color as background, it is applied via the CSS property "background".

To optimize and compress your CSS code, you can use our [online CSS compressor and optimizer](#) based on csstidy. If you want to create a linear or radial gradient as background or border, check our [CSS Gradient Generator](#).

Hey! You found this booklet interesting? Support Converting Colors with the new Membership Option!

The pro membership hides all ads, plus gives you double the colors in the color bucket, and more awesome pro features!

[Learn more, Memberships starting at \\$2.50/m!](#)

**Follow me
on Twitter!**

@ConvertingColor