

Converting Colors

HunterLab(53.8700, 9.1789,
13.5479)

Have a look what the booklet for
HunterLab(53.8700, 9.1789,
13.5479) contains.

HunterLab(53.8285, 9.3258, 13.4076)	3
<i>Conversions</i>	4
<i>Details</i>	6
<i>Harmonies</i>	12
<i>Previews</i>	24
<i>Color Blindness Simulation</i>	28
<i>CSS Examples</i>	31

Color

**HunterLab(53.8285, 9.3258,
13.4076)**

Conversions

Conversions Part 1

Format	Color
Hex	B48979
RGB	180, 137, 121
RGB Percent	71%, 54%, 47%
CMY	0.2941, 0.4627, 0.5255
CMYK	0.00, 0.24, 0.33, 0.29
HSL	16°, 28%, 59%
HSV	16°, 33%, 71%
XYZ	31.2192, 28.9751, 22.0365
YIQ	148.0330, 30.7640, 4.1400

Conversions

Conversions Part 2

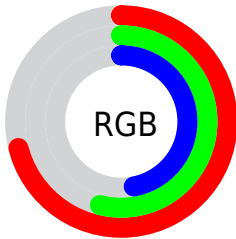
Format	Color
R _Y B	180, 143, 121
Decimal	11831673
CIE Lab	60.76, 14.12, 14.92
CIE LCh	61, 20.543, 46.579
Yxy	28.9764, 0.3797, 0.3524
Android (android.graphics.Color)	4290021753 (0xFFB48979)
YUV	148.0330, -13.3273, 28.0351
Hunter-Lab	53.8285, 9.3258, 13.4076

Details

The HunterLab color $53.8285, 9.3258, 13.4076$ is a dark color, and the websafe version is hex $CC9999$. A complement of this color would be $58.2323, -11.7914, -8.2882$, and the grayscale version is $54.4762, -2.9067, 2.9598$.

A 20% lighter version of the original color is $76.0582, 9.7796, 16.2189$, and $34.2343, 8.8222, 10.6315$ is the 20% darker color. If you saturate the color by 10%, you get $50.0696, 13.8541, 15.8998$, and if you desaturate by 10%, it is $57.8093, 5.0784, 10.6585$.

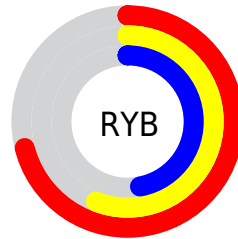
Distribution



Red (71%)

Green (54%)

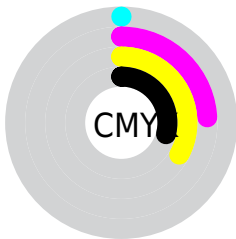
Blue (47%)



Red (71%)

Yellow (56%)

Blue (47%)

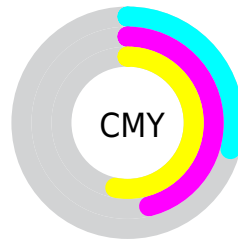


Cyan (0%)

Magenta (24%)

Yellow (33%)

Black (29%)



Cyan (29%)

Magenta (46%)

Yellow (53%)

Brightness & Saturation Gradients

These gradients show how the HunterLab color 53.8285, 9.3258, 13.4076 changes by changing the brightness by 10 percent. The first figure shows a shift by +10% for each color and the second figure -10%.

Similar to the brightness gradients but the following saturation gradients show a change of the HunterLab color 53.8285, 9.3258, 13.4076 by changing the saturation by 10% instead.

■ 53.8285, 9.3258,
13.4076

■ 53.8285, 9.3258,
13.4076

172.3670, 8.3686,
25.8230

■ 43.6612, 9.1163,
11.9784

■ 76.1838, 9.5083,
16.1981

■ 34.2284, 8.8180,
10.5076

■ 88.2939, 9.5011,
17.5743

■ 25.5939, 8.4134,
8.9738

■ 100.9854, 9.4355,
18.9451

■ 17.8398, 7.8813,
7.3403

114.2327, 9.3161,
20.3144

■ 11.0806, 7.1917,
6.3977

128.0134, 9.1467,
21.6849

■ 2.9022, 21.0458,
2.0315

142.3076, 8.9305,

0.0000, NaN, NaN

23.0587

0.0000, NaN, NaN

157.0975, 8.6703,
24.4376

0.0000, NaN, NaN

■ 53.8285, 9.3258,
13.4076

■ 53.8285, 9.3258,
13.4076

■ 50.0696, 13.8541,
15.8998

■ 57.8093, 5.0784,
10.6585

■ 46.5595, 18.6656,
18.0720

■ 61.9816, 1.1063,
7.6986

■ 43.3347, 23.7261,
19.8524

■ 66.3245, -2.6133,
4.5667

■ 40.4339, 28.9614,
21.1612

■ 70.8190, -6.1044,
1.2922

■ 37.8972, 34.2391,
21.9232

■ 75.4493, -9.3915,
-2.1024

■ 35.7614, 39.3586,
22.0937

■ 80.2020, -12.4978,
-5.5996

■ 34.4751, 42.7733,
21.9922

■ 85.0658, -15.4448,
-9.1861

■ 89.6631, -20.3264,
-7.6655

■ 94.0443, -26.7182,
-2.1633

Harmonies

Analogous

The Analogous color harmony consists of three colors that are next to each other on the color wheel.



53.8298, 14.4184, 7.3461



53.8285, 9.3258, 13.4076



53.8298, 1.1304, 16.4136

Triad

The Triadic color harmony groups three colors that are evenly spaced from another and form a triangle on the color wheel.



53.8298, 9.3237, 13.4084



53.8298, -18.4426, 6.5523



53.8298, 2.0654, -15.0012

Complementary

The Complementary color scheme is a pair of colors which are on the opposite of each other on the color wheel.



53.8285, 9.3258, 13.4076



58.2323, -11.7914, -8.2882

Split Complementary

Split-complementary colors differ from the complementary color scheme. The scheme consists of three colors, the original color and two neighbors of the complement color.



53.8298, -6.7668, -15.3065



53.8285, 9.3258, 13.4076



53.8298, -18.2281, -1.8949

Square

The Square scheme is like the rectangle color scheme, but the four colors are evenly spaced on the color wheel.



53.8298, 9.3237, 13.4084



53.8298, -14.6820, 12.9085



53.8298, -14.0759, -10.1985



53.8298, 10.0462, -9.4217

Rectangle

The Rectangle color scheme consists of four colors that form a rectangle on the color wheel.



53.8285, 9.3258, 13.4076



53.8298, -4.8104, 16.6544



53.8298, -14.0759, -10.1985



53.8298, -0.9121, -15.7519

Sweetspot

The Sweet Spot groups the original color and five complimentary colors.



53.8298, 9.3237, 13.4084



84.9647, 0.1529, 9.2881



51.0572, 23.8703, -9.0532



39.1289, 0.3994, 4.5849



95.4677, -5.0939, 5.1869



42.2927, -2.2566, 2.2978

Same Dimension

The Same Dimension uses a secret algorithm to generate beautiful new colors.



53.8298, 9.3237, 13.4084



68.9620, 16.7168, 20.4086



62.0010, -4.9954, 20.8187



29.7791, -0.0980, 3.1119



28.9708, 35.2354, 18.4685



6.0269, 3.9184, 3.7824

Inverse Universe

The Inverse Universe completely reimagines the original color for something new.



58.2323, -11.7914, -8.2882



76.0329, -17.3723, -14.5067



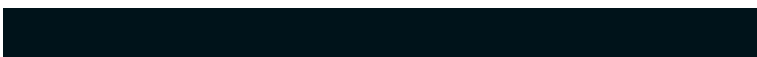
49.6221, 2.2103, -20.9773



30.3873, -2.9898, 0.1240



37.1187, -9.7092, -25.4357



7.2396, -2.6396, -3.3509

Previews

White Background



This preview shows how the HunterLab color 53.8285, 9.3258, 13.4076 looks on a white background.

Color Contrast Check

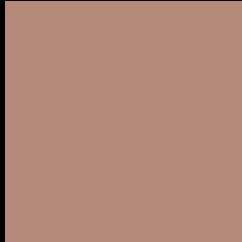
Large Text (above 18pt) WCAG AA ✓ Pass

Any Text WCAG AA × Fail

Large Text (above 18pt) WCAG AAA × Fail

Any Text WCAG AAA × Fail

Black Background



This preview shows how the HunterLab color 53.8285, 9.3258, 13.4076 looks on a black background.

Color Contrast Check

Large Text (above 18pt) WCAG AA ✓ Pass

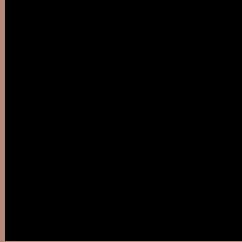
Any Text WCAG AA ✓ Pass

Large Text (above 18pt) WCAG AAA ✓ Pass

Any Text WCAG AAA × Fail

If you want to check with other color combinations, try the [Color Contrast Checker](#).

HunterLab 53.8285, 9.3258, 13.4076 Background



This preview shows how black text looks on a background with the HunterLab color 53.8285, 9.3258, 13.4076.



This preview shows how white text looks on a background with the HunterLab color 53.8285, 9.3258,

13.4076.

Color Blindness Simulation

Color vision deficiency is a very complex topic, and I could not describe the different causes any better than Wikipedia does, so if you want to learn more, you should check out their [article about color blindness](#).

Dichromacy



Original Color

53.8285, 9.3258, 13.4076

Protanopia

53.7905, -3.3039, 11.3309

Deuteranopia

53.8069, 3.6771, 13.6399



Tritanopia

53.8599, 14.6169, 4.3984

Trichromacy



Original Color

53.8285, 9.3258, 13.4076

Protanomaly

53.7463, 0.8121, 12.0968

Deuteranomaly

53.9545, 5.5703, 13.8176

Tritanomaly

53.7859, 12.6175, 7.6874

Monochromacy



Original Color

53.8285, 9.3258, 13.4076

Achromatopsia

54.4186, -2.9036, 2.9567

Achromatomaly

54.0880, 1.2424, 6.9932

CSS Examples

Text

The CSS property to change the color of the text to HunterLab 53.8285, 9.3258, 13.4076 is called "color". The color property can be set on classes, ids or directly on the HTML element.

This example shows how text in the color `rgb(180, 137, 121)` looks like.

```
.text, #text, p{  
    color:rgb(180, 137, 121)  
}
```

If you want to add a text shadow in that color use the text-shadow property, you can generate a text shadow directly with our [CSS Text Shadow Generator](#).

Here you see how black text with a 4 pixel rgb(180, 137, 121) colored shadow looks like.

```
.shadow{ text-shadow: 4px 4px 2px rgb(180, 137, 121) }
```

Border

The CSS property to change the border of an element to HunterLab 53.8285, 9.3258, 13.4076 is called "border". The border property can be set on classes, ids or directly on the HTML element.

This example shows the color as border, it can be applied via the CSS property "border" or "border-color".

```
.border, #border, table{ border:4px solid rgb(180, 137, 121) }
```


If only the border color should be changed use the property `border-color`.

```
.border{ border-color:rgb(180, 137, 121) }
```

If you want to add a box shadow in that color use:

Here you see how a box with a 4 pixel `rgb(180, 137, 121)` colored shadow looks like.

```
.boxshadow{ -moz-box-shadow:4px 4px 4px  
4px rgb(180, 137, 121); -webkit-box-  
shadow:4px 4px 4px 4px rgb(180, 137, 121);  
box-shadow:4px 4px 4px 4px rgb(180, 137,  
121) }
```

Background

The CSS property to change the background color of an element to HunterLab 53.8285, 9.3258, 13.4076 is called "background". The background property can be set on classes, ids or directly on the HTML element.

```
.background, #background, body{  
background: rgb(180, 137, 121) }
```

If only the background color should be changed can be used:

```
.background{ background-color: rgb(180,  
137, 121) }
```

This example shows the color as background, it is applied via the CSS property "background".

To optimize and compress your CSS code, you can use our [online CSS compressor and optimizer](#) based on csstidy. If you want to create a linear or radial gradient as background or border, check our [CSS Gradient Generator](#).

Hey! You found this booklet interesting? Support Converting Colors with the new Membership Option!

The pro membership hides all ads, plus gives you double the colors in the color bucket, and more awesome pro features!

[Learn more, Memberships starting at \\$2.50/m!](#)

**Follow me
on Twitter!**

@ConvertingColor