

# Converting Colors

HunterLab(53.9344, 16.0339,  
11.3071)

Have a look what the booklet for  
HunterLab(53.9344, 16.0339,  
11.3071) contains.

<b>HunterLab(53.8349, 16.2586, 11.3442)</b> .....	3
<i><b>Conversions</b></i> .....	4
<i><b>Details</b></i> .....	6
<i><b>Harmonies</b></i> .....	12
<i><b>Previews</b></i> .....	24
<i><b>Color Blindness Simulation</b></i> .....	28
<i><b>CSS Examples</b></i> .....	31

# Color

**HunterLab(53.8349, 16.2586,  
11.3442)**

# Conversions

## Conversions Part 1

<b>Format</b>	<b>Color</b>
Hex	BE847F
RGB	190, 132, 127
RGB Percent	75%, 52%, 50%
CMY	0.2549, 0.4823, 0.5020
CMYK	0.00, 0.31, 0.33, 0.25
HSL	5°, 33%, 62%
HSV	5°, 33%, 75%
XYZ	33.3172, 28.9820, 23.9167
YIQ	148.7720, 36.1730, 10.7410

# Conversions

## Conversions Part 2

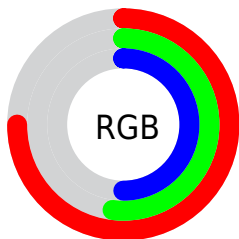
<b>Format</b>	<b>Color</b>
<b>R<sub>YB</sub></b>	190, 132, 127
Decimal	12485759
CIE <sub>Lab</sub>	60.77, 21.65, 11.68
CIE <sub>LCh</sub>	61, 24.605, 28.347
Yxy	28.9833, 0.3864, 0.3362
Android (android.graphics.Color)	4290675839 (0xFFBE847F)
YUV	148.7720, -10.7336, 36.1570
Hunter-Lab	53.8349, 16.2586, 11.3442

# Details

The HunterLab color **53.8349, 16.2586, 11.3442** is a dark color, and the websafe version is hex **CC9999**. A complement of this color would be **65.5181, -18.2251, -4.0316**, and the grayscale version is **54.7626, -2.9220, 2.9754**.

A 20% lighter version of the original color is **76.1247, 17.5515, 13.5840**, and **34.2572, 14.9996, 8.8971** is the 20% darker color. If you saturate the color by 10%, you get **49.1740, 22.9081, 13.5955**, and if you desaturate by 10%, it is **58.8852, 9.8668, 9.0760**.

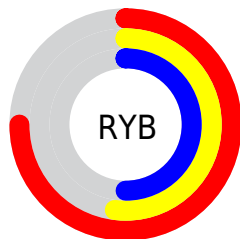
# Distribution



Red (75%)

Green (52%)

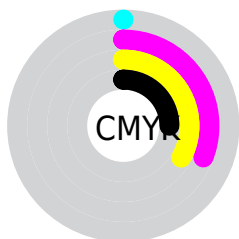
Blue (50%)



Red (75%)

Yellow (52%)

Blue (50%)

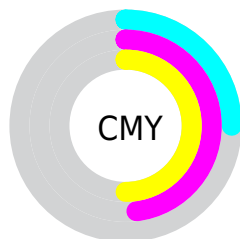


Cyan (0%)

Magenta (31%)

Yellow (33%)

Black (25%)



Cyan (25%)

Magenta (48%)


Yellow (50%)


# Brightness & Saturation Gradients

These gradients show how the HunterLab color 53.8349, 16.2586, 11.3442 changes by changing the brightness by 10 percent. The first figure shows a shift by +10% for each color and the second figure -10%.


Similar to the brightness gradients but the following saturation gradients show a change of the HunterLab color 53.8349, 16.2586, 11.3442 by changing the saturation by 10% instead.





 53.8349, 16.2586,  
11.3442


 53.8349, 16.2586,  
11.3442


172.3764, 18.0282,  
22.4036

 43.6672, 15.6815,  
10.1181


 76.1910, 17.1274,  
13.7732

 34.2339, 14.9972,  
8.8703


 88.3015, 17.4426,  
14.9856

 25.5989, 14.1868,  
7.5861


 100.9934, 17.6874,  
16.2017

 17.8443, 13.2303,  
6.2387

114.2410, 17.8676,  
17.4239

 11.0844, 12.1087,  
5.1858

128.0220, 17.9878,  
18.6539

 2.9138, 32.2282,  
2.0397

142.3165, 18.0524,

0.0000, NaN, NaN

19.8933

0.0000, NaN, NaN

157.1067, 18.0648,  
21.1429

0.0000, NaN, NaN

■ 53.8349, 16.2586,  
11.3442

■ 53.8349, 16.2586,  
11.3442

■ 49.1740, 22.9081,  
13.5955

■ 58.8852, 9.8668,  
9.0760

■ 44.9690, 29.7295,  
15.7688

■ 64.2622, 3.7679,  
6.8206

■ 41.3019, 36.5253,  
17.7712

■ 69.9197, -2.0477,  
4.5945

■ 38.2569, 42.9662,  
19.4719

■ 75.8190, -7.6046,  
2.4031

■ 35.9084, 48.5964,  
20.7209

■ 81.9293, -12.9335,  
0.2465

■ 34.2970, 52.9250,  
21.4019

■ 88.2256, -18.0655,  
-1.8781

■ 33.6027, 54.9128,  
21.6671

■ 94.5151, -24.0083,  
-1.5286

■ 94.7033, -24.2830,  
-1.2996

# Harmonies

## Analogous

The Analogous color harmony consists of three colors that are next to each other on the color wheel.



53.8362, 19.0432, 2.3682



53.8349, 16.2586, 11.3442



53.8362, 8.2400, 16.9567

# Triad

The Triadic color harmony groups three colors that are evenly spaced from another and form a triangle on the color wheel.



53.8362, 16.2563, 11.3451



53.8362, -19.1453, 12.1421



53.8362, -3.4621, -20.2677

# Complementary

The Complementary color scheme is a pair of colors which are on the opposite of each other on the color wheel.



53.8349, 16.2586, 11.3442



65.5181, -18.2251, -4.0316

# Split Complementary

Split-complementary colors differ from the complementary color scheme. The scheme consists of three colors, the original color and two neighbors of the complement color.



53.8362, -13.1564, -16.3177



53.8349, 16.2586, 11.3442



53.8362, -21.7663, 3.4867

# Square

The Square scheme is like the rectangle color scheme, but the four colors are evenly spaced on the color wheel.



53.8362, 16.2563, 11.3451



53.8362, -12.2124, 17.3504



53.8362, -19.6600, -7.1088



53.8362, 7.1446, -17.0714



# Rectangle

The Rectangle color scheme consists of four colors that form a rectangle on the color wheel.



53.8349, 16.2586, 11.3442



53.8362, 1.3024, 18.6673



53.8362, -19.6600, -7.1088



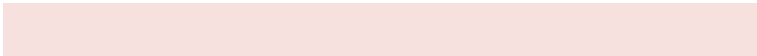
53.8362, -6.9297, -19.7189

# Sweetspot

The Sweet Spot groups the original color and five complimentary colors.



53.8362, 16.2563, 11.3451



88.7515, 2.6884, 8.2793



54.4636, 28.1373, -16.3970



41.0877, 1.7886, 4.0804



98.8636, -5.2751, 5.3714



45.2661, -2.4153, 2.4594



# Same Dimension

The Same Dimension uses a secret algorithm to generate beautiful new colors.



53.8362, 16.2563, 11.3451



67.7172, 28.5626, 17.5474



62.1029, 0.8586, 19.1129



31.0723, 0.7117, 2.7937



27.4880, 44.4873, 17.7168



5.8129, 7.6220, 3.7153



# Inverse Universe

The Inverse Universe completely reimagines the original color for something new.



65.5181, -18.2251, -4.0316



86.6559, -27.7666, -7.4898



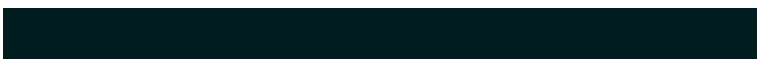
56.0717, -3.7303, -17.0255



32.6746, -3.9605, 0.6993



47.8425, -22.5784, -11.0586

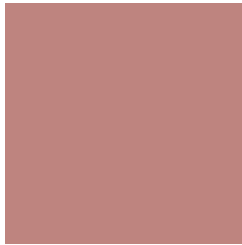


9.6716, -4.7191, -1.9015



# Previews

## White Background



This preview shows how the HunterLab color 53.8349, 16.2586, 11.3442 looks on a white background.

## Color Contrast Check

Large Text (above 18pt) WCAG AA ✓ Pass

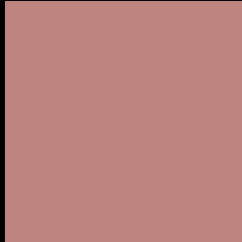
Any Text WCAG AA × Fail

Large Text (above 18pt) WCAG AAA × Fail

Any Text WCAG AAA × Fail



# Black Background



This preview shows how the HunterLab color 53.8349, 16.2586, 11.3442 looks on a black background.

## Color Contrast Check

Large Text (above 18pt) WCAG AA ✓ Pass

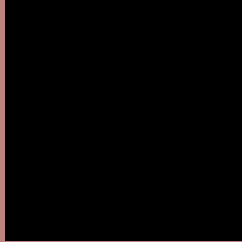
Any Text WCAG AA ✓ Pass

Large Text (above 18pt) WCAG AAA ✓ Pass

Any Text WCAG AAA × Fail

If you want to check with other color combinations, try the [Color Contrast Checker](#).

## HunterLab 53.8349, 16.2586, 11.3442 Background



This preview shows how black text looks on a background with the HunterLab color 53.8349, 16.2586, 11.3442.



This preview shows how white text looks on a background with the HunterLab color 53.8349, 16.2586,



# Color Blindness Simulation

Color vision deficiency is a very complex topic, and I could not describe the different causes any better than Wikipedia does, so if you want to learn more, you should check out their [article about color blindness](#).

## Dichromacy



### Original Color

53.8349, 16.2586, 11.3442

### Protanopia

53.8093, -2.8390, 8.2558

### Deuteranopia

53.8195, 3.9509, 11.8584



## Tritanopia

53.7913, 19.3607, 6.1377

# Trichromacy



## Original Color

53.8349, 16.2586, 11.3442

## Protanomaly

53.6614, 3.7145, 9.4059

## Deuteranomaly

53.8799, 8.3639, 11.6263

## Tritanomaly

53.9057, 18.1689, 8.3233

# Monochromacy



## Original Color

53.8349, 16.2586, 11.3442

## Achromatopsia

54.8219, -2.9252, 2.9786

## Achromatomaly

54.2775, 3.4766, 5.9800

# CSS Examples

## Text

The CSS property to change the color of the text to HunterLab 53.8349, 16.2586, 11.3442 is called "color". The color property can be set on classes, ids or directly on the HTML element.

This example shows how text in the color `rgb(190, 132, 127)` looks like.

```
.text, #text, p{  
    color:rgb(190, 132, 127)  
}
```

If you want to add a text shadow in that color use the text-shadow property, you can generate a text shadow directly with our [CSS Text Shadow Generator](#).

Here you see how black text with a 4 pixel rgb(190, 132, 127) colored shadow looks like.

```
.shadow{ text-shadow: 4px 4px 2px rgb(190, 132, 127) }
```

## Border

The CSS property to change the border of an element to HunterLab 53.8349, 16.2586, 11.3442 is called "border". The border property can be set on classes, ids or directly on the HTML element.

This example shows the color as border, it can be applied via the CSS property "border" or "border-color".

```
.border, #border, table{ border:4px solid rgb(190, 132, 127) }
```



If only the border color should be changed use the property `border-color`.

```
.border{ border-color:rgb(190, 132, 127) }
```

If you want to add a box shadow in that color use:

Here you see how a box with a 4 pixel `rgb(190, 132, 127)` colored shadow looks like.

```
.boxshadow{ -moz-box-shadow:4px 4px 4px  
4px rgb(190, 132, 127); -webkit-box-  
shadow:4px 4px 4px 4px rgb(190, 132, 127);  
box-shadow:4px 4px 4px 4px rgb(190, 132,  
127) }
```

# Background

The CSS property to change the background color of an element to HunterLab 53.8349, 16.2586, 11.3442 is called "background". The background property can be set on classes, ids or directly on the HTML element.

```
.background, #background, body{  
background: rgb(190, 132, 127) }
```

If only the background color should be changed can be used:

```
.background{ background-color: rgb(190,  
132, 127) }
```

This example shows the color as background, it is applied via the CSS property "background".

To optimize and compress your CSS code, you can use our [online CSS compressor and optimizer](#) based on csstidy. If you want to create a linear or radial gradient as background or border, check our [CSS Gradient Generator](#).

Hey! You found this booklet interesting? Support Converting Colors with the new Membership Option!

The pro membership hides all ads, plus gives you double the colors in the color bucket, and more awesome pro features!

**[Learn more, Memberships starting at \\$2.50/m!](#)**

**Follow me  
on Twitter!**

@ConvertingColor