

Converting Colors

HunterLab(53.9516, 9.2005,
11.4394)

Have a look what the booklet for
HunterLab(53.9516, 9.2005,
11.4394) contains.

HunterLab(54.1230, 9.2050, 11.5159)	3
<i>Conversions</i>	4
<i>Details</i>	6
<i>Harmonies</i>	12
<i>Previews</i>	24
<i>Color Blindness Simulation</i>	28
<i>CSS Examples</i>	31

Color

**HunterLab(54.1230, 9.2050,
11.5159)**

Conversions

Conversions Part 1

Format	Color
Hex	B38A7F
RGB	179, 138, 127
RGB Percent	70%, 54%, 50%
CMY	0.2980, 0.4588, 0.5020
CMYK	0.00, 0.23, 0.29, 0.30
HSL	13°, 25%, 60%
HSV	13°, 29%, 70%
XYZ	31.5097, 29.2930, 24.0721
YIQ	149.0050, 27.9670, 5.2710

Conversions

Conversions Part 2

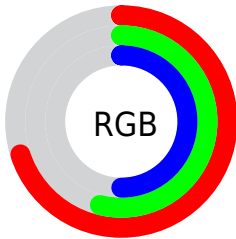
Format	Color
R_{YB}	179, 141, 127
Decimal	11766399
CIE Lab	61.04, 13.98, 11.89
CIE LCh	61, 18.356, 40.387
Yxy	29.2944, 0.3712, 0.3451
Android (android.graphics.Color)	4289956479 (0xFFB38A7F)
YUV	149.0050, -10.8485, 26.3056
Hunter-Lab	54.1230, 9.2050, 11.5159

Details

The HunterLab color $54.1230, 9.2050, 11.5159$ is a dark color, and the websafe version is hex $CC9999$. A complement of this color would be $59.8088, -12.4698, -5.6424$, and the grayscale version is $54.8594, -2.9272, 2.9806$.

A 20% lighter version of the original color is $76.6990, 9.3230, 14.0457$, and $34.4811, 8.6243, 9.0045$ is the 20% darker color. If you saturate the color by 10%, you get $50.0783, 14.1284, 13.9422$, and if you desaturate by 10%, it is $58.4119, 4.5546, 8.9226$.

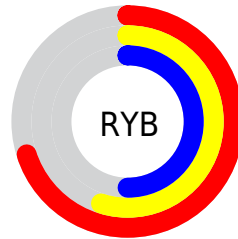
Distribution



Red (70%)

Green (54%)

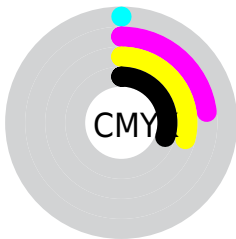
Blue (50%)



Red (70%)

Yellow (55%)

Blue (50%)

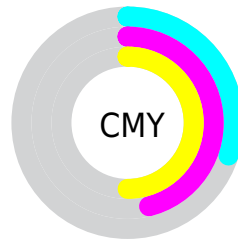


Cyan (0%)

Magenta (23%)

Yellow (29%)

Black (30%)



Cyan (30%)

Magenta (46%)

Yellow (50%)

Brightness & Saturation Gradients

These gradients show how the HunterLab color 54.1230, 9.2050, 11.5159 changes by changing the brightness by 10 percent. The first figure shows a shift by +10% for each color and the second figure -10%.

Similar to the brightness gradients but the following saturation gradients show a change of the HunterLab color 54.1230, 9.2050, 11.5159 by changing the saturation by 10% instead.

■ 54.1230, 9.2050,
11.5159

■ 54.1230, 9.2050,
11.5159

172.8008, 8.1831,
22.6638

■ 43.9359, 9.0049,
10.2772

■ 76.5143, 9.3706,
13.9678

■ 34.4817, 8.7167,
9.0159

■ 88.6412, 9.3557,
15.1908

■ 25.8239, 8.3232,
7.7169

■ 101.3485, 9.2827,
16.4170

■ 18.0438, 7.8035,
6.3535

114.6111, 9.1562,
17.6488

■ 11.2548, 7.1276,
5.2480

128.4064, 8.9800,
18.8882

■ 3.3940, 17.7689,
2.3758

142.7147, 8.7573,

0.0000, NaN, NaN

20.1365

0.0000, NaN, NaN

157.5182, 8.4908,
21.3947

0.0000, NaN, NaN

■ 54.1230, 9.2050,
11.5159

■ 54.1230, 9.2050,
11.5159

■ 50.0783, 14.1284,
13.9422

■ 58.4119, 4.5546,
8.9226

■ 46.3109, 19.3229,
16.1451

■ 62.9101, 0.1722,
6.1994

■ 42.8650, 24.7436,
18.0551

■ 67.5930, -3.9659,
3.3758

■ 39.7885, 30.2945,
19.5864

■ 72.4393, -7.8845,
0.4724

■ 37.1318, 35.8067,
20.6463

■ 77.4311, -11.6093,
-2.4963

■ 34.9419, 41.0289,
21.1576

■ 82.5535, -15.1644,
-5.5199

■ 33.2459, 45.6173,
21.1975

■ 87.7941, -18.5716,
-8.5908

■ 33.1092, 46.0007,
21.2070

■ 92.5944, -24.9624,
-3.9600

■ 93.9807, -26.9542,
-2.2470

Harmonies

Analogous

The Analogous color harmony consists of three colors that are next to each other on the color wheel.



54.1243, 12.9163, 5.4934



54.1230, 9.2050, 11.5159



54.1243, 2.3159, 14.8921

Triad

The Triadic color harmony groups three colors that are evenly spaced from another and form a triangle on the color wheel.



54.1243, 9.2029, 11.5167



54.1243, -16.5010, 7.5863



54.1243, -0.1178, -13.3265

Complementary

The Complementary color scheme is a pair of colors which are on the opposite of each other on the color wheel.



54.1230, 9.2050, 11.5159



59.8088, -12.4698, -5.6424

Split Complementary

Split-complementary colors differ from the complementary color scheme. The scheme consists of three colors, the original color and two neighbors of the complement color.



54.1243, -7.9079, -12.5524



54.1230, 9.2050, 11.5159



54.1243, -17.0693, 0.2687

Square

The Square scheme is like the rectangle color scheme, but the four colors are evenly spaced on the color wheel.



54.1243, 9.2029, 11.5167



54.1243, -12.4084, 12.8589



54.1243, -14.0079, -7.3053



54.1243, 7.3335, -9.2894

Rectangle

The Rectangle color scheme consists of four colors that form a rectangle on the color wheel.



54.1230, 9.2050, 11.5159



54.1243, -2.9937, 15.5219



54.1243, -14.0079, -7.3053



54.1243, -2.7879, -13.6330

Sweetspot

The Sweet Spot groups the original color and five complimentary colors.



54.1243, 9.2029, 11.5167



84.1278, 0.2887, 8.3345



52.5475, 21.1730, -9.3807



39.1820, 0.5246, 4.1747



95.4677, -5.0939, 5.1869



42.2927, -2.2566, 2.2978

Same Dimension

The Same Dimension uses a secret algorithm to generate beautiful new colors.



54.1243, 9.2029, 11.5167



68.8515, 16.5860, 17.5655



61.1988, -3.2925, 18.1999



29.6430, 0.1355, 2.9622



27.9745, 38.2295, 17.9070



5.7465, 4.6023, 3.6215

Inverse Universe

The Inverse Universe completely reimagines the original color for something new.



59.8088, -12.4698, -5.6424



78.0537, -18.6598, -10.2499



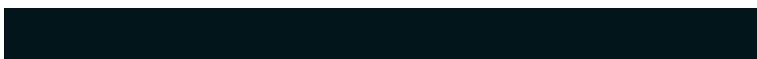
52.2419, -0.3589, -16.2168



30.5290, -3.2184, 0.2933



39.8540, -13.5730, -20.5139



7.5918, -3.1071, -2.7818

Previews

White Background



This preview shows how the HunterLab color 54.1230, 9.2050, 11.5159 looks on a white background.

Color Contrast Check

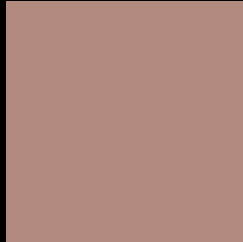
Large Text (above 18pt) WCAG AA ✓ Pass

Any Text WCAG AA × Fail

Large Text (above 18pt) WCAG AAA × Fail

Any Text WCAG AAA × Fail

Black Background



This preview shows how the HunterLab color 54.1230, 9.2050, 11.5159 looks on a black background.

Color Contrast Check

Large Text (above 18pt) WCAG AA ✓ Pass

Any Text WCAG AA ✓ Pass

Large Text (above 18pt) WCAG AAA ✓ Pass

Any Text WCAG AAA × Fail

If you want to check with other color combinations, try the [Color Contrast Checker](#).

HunterLab 54.1230, 9.2050, 11.5159 Background



This preview shows how black text looks on a background with the HunterLab color 54.1230, 9.2050, 11.5159.



This preview shows how white text looks on a background with the HunterLab color 54.1230, 9.2050,

Color Blindness Simulation

Color vision deficiency is a very complex topic, and I could not describe the different causes any better than Wikipedia does, so if you want to learn more, you should check out their [article about color blindness](#).

Dichromacy



Original Color

54.1230, 9.2050, 11.5159

Protanopia

54.2249, -2.9688, 9.4923

Deuteranopia

54.1178, 3.5885, 11.7848



Tritanopia

54.0620, 14.0470, 3.7348

Trichromacy



Original Color

54.1230, 9.2050, 11.5159

Protanomaly

54.1708, 1.1118, 10.2844

Deuteranomaly

54.2590, 5.4652, 11.9609

Tritanomaly

54.0145, 12.1715, 6.6849

Monochromacy



Original Color

54.1230, 9.2050, 11.5159

Achromatopsia

54.8219, -2.9252, 2.9786

Achromatomaly

54.4495, 1.1939, 6.1329

CSS Examples

Text

The CSS property to change the color of the text to HunterLab 54.1230, 9.2050, 11.5159 is called "color". The color property can be set on classes, ids or directly on the HTML element.

This example shows how text in the color `rgb(179, 138, 127)` looks like.

```
.text, #text, p{  
    color:rgb(179, 138, 127)  
}
```

If you want to add a text shadow in that color use the text-shadow property, you can generate a text shadow directly with our [CSS Text Shadow Generator](#).

Here you see how black text with a 4 pixel rgb(179, 138, 127) colored shadow looks like.

```
.shadow{ text-shadow: 4px 4px 2px rgb(179, 138, 127) }
```

Border

The CSS property to change the border of an element to HunterLab 54.1230, 9.2050, 11.5159 is called "border". The border property can be set on classes, ids or directly on the HTML element.

This example shows the color as border, it can be applied via the CSS property "border" or "border-color".

```
.border, #border, table{ border:4px solid rgb(179, 138, 127) }
```


If only the border color should be changed use the property `border-color`.

```
.border{ border-color:rgb(179, 138, 127) }
```

If you want to add a box shadow in that color use:

Here you see how a box with a 4 pixel `rgb(179, 138, 127)` colored shadow looks like.

```
.boxshadow{ -moz-box-shadow:4px 4px 4px  
4px rgb(179, 138, 127); -webkit-box-  
shadow:4px 4px 4px 4px rgb(179, 138, 127);  
box-shadow:4px 4px 4px 4px rgb(179, 138,  
127) }
```

Background

The CSS property to change the background color of an element to HunterLab 54.1230, 9.2050, 11.5159 is called "background". The background property can be set on classes, ids or directly on the HTML element.

```
.background, #background, body{  
background: rgb(179, 138, 127) }
```

If only the background color should be changed can be used:

```
.background{ background-color: rgb(179,  
138, 127) }
```

This example shows the color as background, it is applied via the CSS property "background".

To optimize and compress your CSS code, you can use our [online CSS compressor and optimizer](#) based on csstidy. If you want to create a linear or radial gradient as background or border, check our [CSS Gradient Generator](#).

Hey! You found this booklet interesting? Support Converting Colors with the new Membership Option!

The pro membership hides all ads, plus gives you double the colors in the color bucket, and more awesome pro features!

[Learn more, Memberships starting at \\$2.50/m!](#)

**Follow me
on Twitter!**

@ConvertingColor