

# Converting Colors

HunterLab(53.9634, 2.4804,  
16.7553)

Have a look what the booklet for  
HunterLab(53.9634, 2.4804,  
16.7553) contains.

<b>HunterLab(53.9922, 2.5020, 16.7990)</b> .....	3
<b><i>Conversions</i></b> .....	4
<b><i>Details</i></b> .....	6
<b><i>Harmonies</i></b> .....	12
<b><i>Previews</i></b> .....	24
<b><i>Color Blindness Simulation</i></b> .....	28
<b><i>CSS Examples</i></b> .....	31

# Color

**HunterLab(53.9922, 2.5020,  
16.7990)**

# Conversions

## Conversions Part 1

<b>Format</b>	<b>Color</b>
Hex	AB8E6F
RGB	171, 142, 111
RGB Percent	67%, 56%, 44%
CMY	0.3294, 0.4431, 0.5647
CMYK	0.00, 0.17, 0.35, 0.33
HSL	31°, 26%, 55%
HSV	31°, 35%, 67%
XYZ	29.3368, 29.1516, 19.1195
YIQ	147.1370, 27.2350, -3.4930

# Conversions

## Conversions Part 2

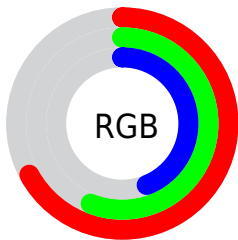
<b>Format</b>	<b>Color</b>
<b>R<sub>YB</sub></b>	167, 171, 111
Decimal	11243119
CIE Lab	60.92, 6.37, 20.62
CIE LCh	61, 21.580, 72.826
Yxy	29.1529, 0.3780, 0.3756
Android (android.graphics.Color)	4289433199 (0xFFAB8E6F)
YUV	147.1370, -17.8155, 20.9279
Hunter-Lab	53.9922, 2.5020, 16.7990

# Details

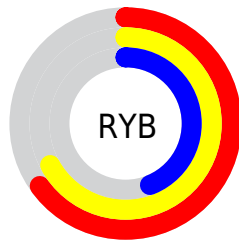
The HunterLab color  $53.9922, 2.5020, 16.7990$  is a dark color, and the websafe version is hex  $999966$ . A complement of this color would be  $50.0750, -4.6320, -14.8432$ , and the grayscale version is  $54.1336, -2.8884, 2.9412$ .

A 20% lighter version of the original color is  $76.4559, 1.6820, 20.2706$ , and  $34.4452, 2.9200, 13.1815$  is the 20% darker color. If you saturate the color by 10%, you get  $51.4226, 4.7745, 19.5869$ , and if you desaturate by 10%, it is  $56.6723, 0.5007, 13.5280$ .

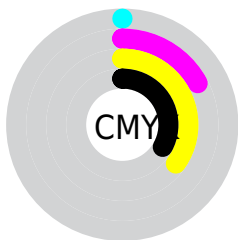
# Distribution



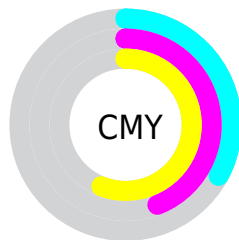
- Red (67%)
- Green (56%)
- Blue (44%)



- Red (65%)
- Yellow (67%)
- Blue (44%)



- Cyan (0%)
- Magenta (17%)
- Yellow (35%)
- Black (33%)



- Cyan (33%)
- Magenta (44%)
- Yellow (56%)

# Brightness & Saturation Gradients

These gradients show how the HunterLab color 53.9922, 2.5020, 16.7990 changes by changing the brightness by 10 percent. The first figure shows a shift by +10% for each color and the second figure -10%.

Similar to the brightness gradients but the following saturation gradients show a change of the HunterLab color 53.9922, 2.5020, 16.7990 by changing the saturation by 10% instead.



■ 53.9922, 2.5020,  
16.7990

■ 53.9922, 2.5020,  
16.7990

172.6082, -1.3695,  
31.6697

■ 43.8139, 2.6959,  
15.0002

■ 76.3675, 1.9408,  
20.2467

■ 34.3691, 2.8268,  
13.1232

■ 88.4870, 1.5874,  
21.9199

■ 25.7217, 2.8825,  
11.1358

■ 101.1873, 1.1900,  
23.5713

■ 17.9532, 2.8487,  
8.9857

■ 114.4431, 0.7514,  
25.2067

■ 11.1773, 2.7022,  
7.8241

128.2319, 0.2742,  
26.8310

■ 3.1851, 8.5472,  
2.2296

142.5339, -0.2396,

0.0000, NaN, NaN

28.4477

0.0000, NaN, NaN

157.3314, -0.7880,  
30.0598

0.0000, NaN, NaN

■ 53.9922, 2.5020,  
16.7990

■ 53.9922, 2.5020,  
16.7990

■ 51.4226, 4.7745,  
19.5869

■ 56.6723, 0.5007,  
13.5280

■ 48.9685, 7.3351,  
21.8459

■ 59.4509, -1.2380,  
9.8150

■ 46.6403, 10.1869,  
23.5360

■ 62.3218, -2.7328,  
5.7013

■ 44.4474, 13.3254,  
24.6238

■ 65.2780, -4.0007,  
1.2247

■ 42.3988, 16.7330,  
25.0928

■ 68.3133, -5.0590,  
-3.5806

■ 40.5015, 20.3711,  
24.9603

■ 71.4221, -5.9241,  
-8.6842

■ 39.6191, 22.1892,  
24.8016

■ 74.5992, -6.6116,  
-14.0587

■ 77.8402, -7.1361,  
-19.6802

■ 80.7368, -9.7466,  
-19.8972

# Harmonies

## Analogous

The Analogous color harmony consists of three colors that are next to each other on the color wheel.



53.9935, 10.8715, 13.2737



53.9922, 2.5020, 16.7990



53.9935, -6.7976, 17.0371

# Triad

The Triadic color harmony groups three colors that are evenly spaced from another and form a triangle on the color wheel.



53.9935, 2.5000, 16.7997



53.9935, -19.2415, -0.9765



53.9935, 9.8216, -11.0894

# Complementary

The Complementary color scheme is a pair of colors which are on the opposite of each other on the color wheel.



53.9922, 2.5020, 16.7990



50.0750, -4.6320, -14.8432

# Split Complementary

Split-complementary colors differ from the complementary color scheme. The scheme consists of three colors, the original color and two neighbors of the complement color.



53.9935, 1.1447, -16.4240



53.9922, 2.5020, 16.7990



53.9935, -15.3866, -9.9546

# Square

The Square scheme is like the rectangle color scheme, but the four colors are evenly spaced on the color wheel.



53.9935, 2.5000, 16.7997



53.9935, -18.9331, 7.7258



53.9935, -8.0647, -15.9767



53.9935, 15.2909, -2.3306



# Rectangle

The Rectangle color scheme consists of four colors that form a rectangle on the color wheel.



53.9922, 2.5020, 16.7990



53.9935, -12.2424, 15.3717



53.9935, -8.0647, -15.9767



53.9935, 7.1590, -13.4041

# Sweetspot

The Sweet Spot groups the original color and five complimentary colors.



53.9935, 2.5000, 16.7997



81.0424, -2.4730, 11.0530



46.8194, 21.8156, -2.1880



38.0347, -1.0408, 5.5544



93.2148, -4.9737, 5.0645



40.3295, -2.1519, 2.1912



# Same Dimension

The Same Dimension uses a secret algorithm to generate beautiful new colors.



53.9935, 2.5000, 16.7997



69.6100, 5.6420, 25.3993



62.3053, -11.5990, 23.8778



29.4519, -1.0266, 3.6088



34.5529, 18.9171, 21.6225



6.6416, 1.3308, 4.1158



# Inverse Universe

The Inverse Universe completely reimagines the original color for something new.



50.0750, -4.6320, -14.8432



63.2967, -5.7308, -25.7312



42.1358, 9.7917, -28.0782



28.9344, -1.9836, -0.5506



26.3502, 7.4349, -48.9854

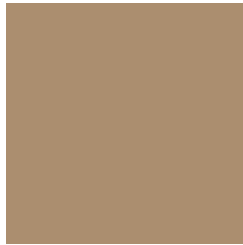


5.5055, -0.7225, -5.3217



# Previews

## White Background



This preview shows how the HunterLab color 53.9922, 2.5020, 16.7990 looks on a white background.

## Color Contrast Check

Large Text (above 18pt) WCAG AA ✓ Pass

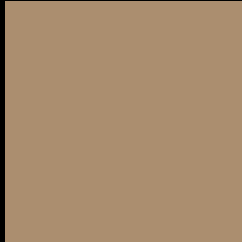
Any Text WCAG AA × Fail

Large Text (above 18pt) WCAG AAA × Fail

Any Text WCAG AAA × Fail



# Black Background



This preview shows how the HunterLab color 53.9922, 2.5020, 16.7990 looks on a black background.

## Color Contrast Check

Large Text (above 18pt) WCAG AA ✓ Pass

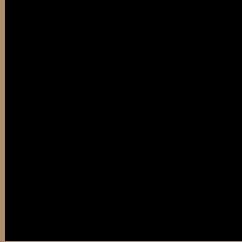
Any Text WCAG AA ✓ Pass

Large Text (above 18pt) WCAG AAA ✓ Pass

Any Text WCAG AAA × Fail

If you want to check with other color combinations, try the [Color Contrast Checker](#).

## HunterLab 53.9922, 2.5020, 16.7990 Background



This preview shows how black text looks on a background with the HunterLab color 53.9922, 2.5020, 16.7990.



This preview shows how white text looks on a background with the HunterLab color 53.9922, 2.5020,



# Color Blindness Simulation

Color vision deficiency is a very complex topic, and I could not describe the different causes any better than Wikipedia does, so if you want to learn more, you should check out their [article about color blindness](#).

## Dichromacy



### Original Color

53.9922, 2.5020, 16.7990

### Protanopia

54.0627, -4.4102, 16.1027

### Deuteranopia

53.9274, 3.6948, 16.7601



## Tritanopia

53.9846, 11.2361, 2.6914

# Trichromacy



## Original Color

53.9922, 2.5020, 16.7990

## Protanomaly

53.9463, -1.9227, 16.3601

## Deuteranomaly

53.8220, 3.3406, 16.6566

## Tritanomaly

54.0492, 7.9954, 8.3006

# Monochromacy



## Original Color

53.9922, 2.5020, 16.7990

## Achromatopsia

54.0158, -2.8821, 2.9348

## Achromatomaly

53.8887, -1.0989, 8.3719

# CSS Examples

## Text

The CSS property to change the color of the text to HunterLab 53.9922, 2.5020, 16.7990 is called "color". The color property can be set on classes, ids or directly on the HTML element.

This example shows how text in the color `rgb(171, 142, 111)` looks like.

```
.text, #text, p{  
    color:rgb(171, 142, 111)  
}
```

If you want to add a text shadow in that color use the text-shadow property, you can generate a text shadow directly with our [CSS Text Shadow Generator](#).

Here you see how black text with a 4 pixel rgb(171, 142, 111) colored shadow looks like.

```
.shadow{ text-shadow: 4px 4px 2px rgb(171, 142, 111) }
```

## Border

The CSS property to change the border of an element to HunterLab 53.9922, 2.5020, 16.7990 is called "border". The border property can be set on classes, ids or directly on the HTML element.

This example shows the color as border, it can be applied via the CSS property "border" or "border-color".

```
.border, #border, table{ border:4px solid rgb(171, 142, 111) }
```



If only the border color should be changed use the property `border-color`.

```
.border{ border-color:rgb(171, 142, 111) }
```

If you want to add a box shadow in that color use:

Here you see how a box with a 4 pixel `rgb(171, 142, 111)` colored shadow looks like.

```
.boxshadow{ -moz-box-shadow:4px 4px 4px  
4px rgb(171, 142, 111); -webkit-box-  
shadow:4px 4px 4px 4px rgb(171, 142, 111);  
box-shadow:4px 4px 4px 4px rgb(171, 142,  
111) }
```

# Background

The CSS property to change the background color of an element to HunterLab 53.9922, 2.5020, 16.7990 is called "background". The background property can be set on classes, ids or directly on the HTML element.

```
.background, #background, body{  
background: rgb(171, 142, 111) }
```

If only the background color should be changed can be used:

```
.background{ background-color: rgb(171,  
142, 111) }
```

This example shows the color as background, it is applied via the CSS property "background".

To optimize and compress your CSS code, you can use our [online CSS compressor and optimizer](#) based on csstidy. If you want to create a linear or radial gradient as background or border, check our [CSS Gradient Generator](#).

Hey! You found this booklet interesting? Support Converting Colors with the new Membership Option!

The pro membership hides all ads, plus gives you double the colors in the color bucket, and more awesome pro features!

**[Learn more, Memberships starting at \\$2.50/m!](#)**

**Follow me  
on Twitter!**

@ConvertingColor