

Converting Colors

HunterLab(53.9754, 13.0526,
8.9991)

Have a look what the booklet for
HunterLab(53.9754, 13.0526,
8.9991) contains.

HunterLab(53.9339, 12.9331, 9.0663)	3
<i>Conversions</i>	4
<i>Details</i>	6
<i>Harmonies</i>	12
<i>Previews</i>	24
<i>Color Blindness Simulation</i>	28
<i>CSS Examples</i>	31

Color

**HunterLab(53.9339, 12.9331,
9.0663)**

Conversions

Conversions Part 1

Format	Color
Hex	B78785
RGB	183, 135, 133
RGB Percent	72%, 53%, 52%
CMY	0.2824, 0.4706, 0.4784
CMYK	0.00, 0.26, 0.27, 0.28
HSL	2°, 26%, 62%
HSV	2°, 27%, 72%
XYZ	32.4260, 29.0887, 26.0959
YIQ	149.1240, 29.2500, 9.5540

Conversions

Conversions Part 2

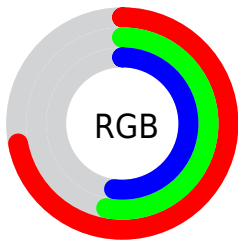
Format	Color
RYB	183, 135, 133
Decimal	12027781
CIELab	60.86, 18.08, 8.29
CIELCh	61, 19.886, 24.624
Yxy	29.0900, 0.3701, 0.3320
Android (android.graphics.Color)	4290217861 (0xFFB78785)
YUV	149.1240, -7.9491, 29.7093
Hunter-Lab	53.9339, 12.9331, 9.0663

Details

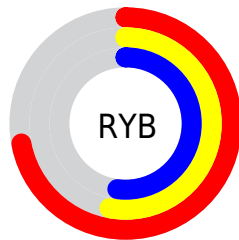
The HunterLab color **53.9339, 12.9331, 9.0663** is a light color, and the websafe version is hex **CC9999**. A complement of this color would be **64.3831, -16.3455, -1.8695**, and the grayscale version is **54.8957, -2.9291, 2.9826**.

A 20% lighter version of the original color is **76.1819, 13.7830, 11.0303**, and **34.3573, 12.1013, 6.9084** is the 20% darker color. If you saturate the color by 10%, you get **49.1153, 19.5095, 11.1352**, and if you desaturate by 10%, it is **59.1218, 6.6169, 7.0563**.

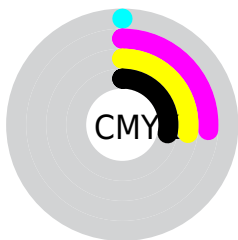
Distribution



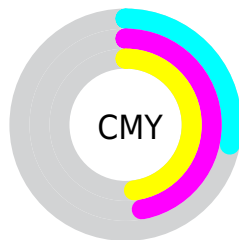
- Red (72%)
- Green (53%)
- Blue (52%)



- Red (72%)
- Yellow (53%)
- Blue (52%)



- Cyan (0%)
- Magenta (26%)
- Yellow (27%)
- Black (28%)



- Cyan (28%)
- Magenta (47%)
- Yellow (48%)

Brightness & Saturation Gradients

These gradients show how the HunterLab color 53.9339, 12.9331, 9.0663 changes by changing the brightness by 10 percent. The first figure shows a shift by +10% for each color and the second figure -10%.

Similar to the brightness gradients but the following saturation gradients show a change of the HunterLab color 53.9339, 12.9331, 9.0663 by changing the saturation by 10% instead.

■ 53.9339, 12.9331,
9.0663

■ 53.9339, 12.9331,
9.0663

172.5223, 13.4157,
18.7395

■ 43.7595, 12.5285,
8.0461

■ 76.3021, 13.4791,
11.1275

■ 34.3190, 12.0247,
7.0242

■ 88.4182, 13.6423,
12.1728

■ 25.6762, 11.4030,
5.9922

■ 101.1154, 13.7406,
13.2307

■ 17.9128, 10.6419,
4.9340

114.3682, 13.7792,
14.3024

■ 11.1428, 9.7148,
3.9163

128.1541, 13.7626,
15.3886

■ 3.0873, 25.3501,
2.1611

142.4534, 13.6944,

0.0000, NaN, NaN

16.4900

0.0000, NaN, NaN

157.2481, 13.5778,
17.6069

0.0000, NaN, NaN

■ 53.9339, 12.9331,
9.0663

■ 53.9339, 12.9331,
9.0663

■ 49.1153, 19.5095,
11.1352

■ 59.1218, 6.6169,
7.0563

■ 44.7313, 26.2837,
13.2267

■ 64.6186, 0.5805,
5.1151

■ 40.8650, 33.0905,
15.2751

■ 70.3806, -5.1938,
3.2446

■ 37.6059, 39.6313,
17.1699

■ 76.3714, -10.7337,
1.4400

■ 35.0395, 45.4610,
18.7593

■ 82.5622, -16.0703,
-0.3061

■ 33.2244, 50.0577,
19.8836

■ 88.9298, -21.2339,
-2.0013

■ 32.1589, 52.9977,
20.4845

■ 94.2376, -26.0019,
-1.9093

■ 31.9789, 53.4855,
20.6416

Harmonies

Analogous

The Analogous color harmony consists of three colors that are next to each other on the color wheel.



53.9352, 14.5247, 1.4465



53.9339, 12.9331, 9.0663



53.9352, 6.9943, 14.2168

Triad

The Triadic color harmony groups three colors that are evenly spaced from another and form a triangle on the color wheel.



53.9352, 12.9310, 9.0672



53.9352, -15.6696, 11.2451



53.9352, -4.4159, -15.1180

Complementary

The Complementary color scheme is a pair of colors which are on the opposite of each other on the color wheel.



53.9339, 12.9331, 9.0663



64.3831, -16.3455, -1.8695

Split Complementary

Split-complementary colors differ from the complementary color scheme. The scheme consists of three colors, the original color and two neighbors of the complement color.



53.9352, -12.0928, -11.4728



53.9339, 12.9331, 9.0663



53.9352, -18.3253, 4.3839

Square

The Square scheme is like the rectangle color scheme, but the four colors are evenly spaced on the color wheel.



53.9352, 12.9310, 9.0672



53.9352, -9.5762, 15.3299



53.9352, -17.0577, -4.0123



53.9352, 4.1582, -13.3460

Rectangle

The Rectangle color scheme consists of four colors that form a rectangle on the color wheel.



53.9339, 12.9331, 9.0663



53.9352, 1.5583, 15.9684



53.9352, -17.0577, -4.0123



53.9352, -7.1807, -14.4705

Sweetspot

The Sweet Spot groups the original color and five complimentary colors.



53.9352, 12.9310, 9.0672



85.8676, 1.4178, 7.0523



54.9477, 21.7341, -13.1256



39.8250, 1.2293, 3.4959



96.5975, -5.1542, 5.2483



43.2801, -2.3093, 2.3515

Same Dimension

The Same Dimension uses a secret algorithm to generate beautiful new colors.



53.9352, 12.9310, 9.0672



68.1027, 22.7461, 13.8498



60.6524, 0.6167, 15.6924



30.1137, 0.8426, 2.6093



26.7552, 44.5193, 17.2658



5.2152, 7.7287, 3.3489

Inverse Universe

The Inverse Universe completely reimagines the original color for something new.



64.3831, -16.3455, -1.8695



85.0508, -24.9897, -3.9629



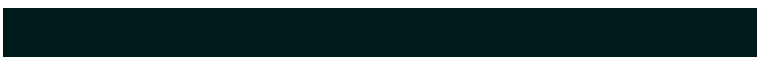
56.8284, -4.7009, -11.8054



31.8547, -3.9969, 0.7983



48.9696, -24.6037, -8.0955



9.2981, -4.7449, -1.3789

Previews

White Background



This preview shows how the HunterLab color 53.9339, 12.9331, 9.0663 looks on a white background.

Color Contrast Check

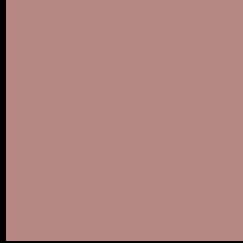
Large Text (above 18pt) WCAG AA ✓ Pass

Any Text WCAG AA × Fail

Large Text (above 18pt) WCAG AAA × Fail

Any Text WCAG AAA × Fail

Black Background



This preview shows how the HunterLab color 53.9339, 12.9331, 9.0663 looks on a black background.

Color Contrast Check

Large Text (above 18pt) WCAG AA ✓ Pass

Any Text WCAG AA ✓ Pass

Large Text (above 18pt) WCAG AAA ✓ Pass

Any Text WCAG AAA × Fail

If you want to check with other color combinations, try the [Color Contrast Checker](#).

HunterLab 53.9339, 12.9331, 9.0663 Background



This preview shows how black text looks on a background with the HunterLab color 53.9339, 12.9331, 9.0663.



This preview shows how white text looks on a background with the HunterLab color 53.9339, 12.9331, 9.0663.

Color Blindness Simulation

Color vision deficiency is a very complex topic, and I could not describe the different causes any better than Wikipedia does, so if you want to learn more, you should check out their [article about color blindness](#).

Dichromacy



Original Color

53.9339, 12.9331, 9.0663

Protanopia

54.2281, -2.5922, 6.6636

Deuteranopia

54.0624, 3.6975, 9.4371



Tritanopia

53.8322, 15.8430, 4.3878

Trichromacy



Original Color

53.9339, 12.9331, 9.0663

Protanomaly

54.0718, 2.5675, 7.4129

Deuteranomaly

53.8660, 7.2392, 9.2907

Tritanomaly

53.9759, 14.7598, 6.2644

Monochromacy



Original Color

53.9339, 12.9331, 9.0663

Achromatopsia

54.8219, -2.9252, 2.9786

Achromatomaly

54.3201, 2.3033, 5.1480

CSS Examples

Text

The CSS property to change the color of the text to HunterLab 53.9339, 12.9331, 9.0663 is called "color". The color property can be set on classes, ids or directly on the HTML element.

This example shows how text in the color `rgb(183, 135, 133)` looks like.

```
.text, #text, p{  
    color:rgb(183, 135, 133)  
}
```

If you want to add a text shadow in that color use the text-shadow property, you can generate a text shadow directly with our [CSS Text Shadow Generator](#).

Here you see how black text with a 4 pixel rgb(183, 135, 133) colored shadow looks like.

```
.shadow{ text-shadow: 4px 4px 2px rgb(183, 135, 133) }
```

Border

The CSS property to change the border of an element to HunterLab 53.9339, 12.9331, 9.0663 is called "border". The border property can be set on classes, ids or directly on the HTML element.

This example shows the color as border, it can be applied via the CSS property "border" or "border-color".

```
.border, #border, table{ border:4px solid rgb(183, 135, 133) }
```


If only the border color should be changed use the property `border-color`.

```
.border{ border-color:rgb(183, 135, 133) }
```

If you want to add a box shadow in that color use:

Here you see how a box with a 4 pixel `rgb(183, 135, 133)` colored shadow looks like.

```
.boxshadow{ -moz-box-shadow:4px 4px 4px  
4px rgb(183, 135, 133); -webkit-box-  
shadow:4px 4px 4px 4px rgb(183, 135, 133);  
box-shadow:4px 4px 4px 4px rgb(183, 135,  
133) }
```

Background

The CSS property to change the background color of an element to HunterLab 53.9339, 12.9331, 9.0663 is called "background". The background property can be set on classes, ids or directly on the HTML element.

```
.background, #background, body{  
background: rgb(183, 135, 133) }
```

If only the background color should be changed can be used:

```
.background{ background-color: rgb(183,  
135, 133) }
```

This example shows the color as background, it is applied via the CSS property "background".

To optimize and compress your CSS code, you can use our [online CSS compressor and optimizer](#) based on csstidy. If you want to create a linear or radial gradient as background or border, check our [CSS Gradient Generator](#).

Hey! You found this booklet interesting? Support Converting Colors with the new Membership Option!

The pro membership hides all ads, plus gives you double the colors in the color bucket, and more awesome pro features!

[Learn more, Memberships starting at \\$2.50/m!](#)

**Follow me
on Twitter!**

@ConvertingColor