

Converting Colors

HunterLab(54.0023, 10.6781,
7.4786)

Have a look what the booklet for
HunterLab(54.0023, 10.6781,
7.4786) contains.

HunterLab(54.0023, 10.6781, 7.4786)	3
<i>Conversions</i>	4
<i>Details</i>	6
<i>Harmonies</i>	12
<i>Previews</i>	24
<i>Color Blindness Simulation</i>	28
<i>CSS Examples</i>	31

Color

**HunterLab(54.0023, 10.6781,
7.4786)**

Conversions

Conversions Part 1

Format	Color
Hex	B28989
RGB	178, 137, 137
RGB Percent	70%, 54%, 54%
CMY	0.3020, 0.4627, 0.4627
CMYK	0.00, 0.23, 0.23, 0.30
HSL	0°, 21%, 62%
HSV	0°, 23%, 70%
XYZ	31.8212, 29.1625, 27.6187
YIQ	149.2590, 24.4360, 8.6920

Conversions

Conversions Part 2

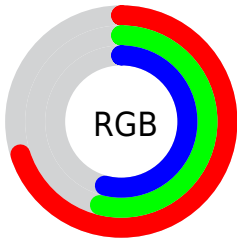
Format	Color
RYB	178, 137, 137
Decimal	11700617
CIELab	60.93, 15.61, 6.03
CIElCh	61, 16.735, 21.109
Yxy	29.1638, 0.3591, 0.3291
Android (android.graphics.Color)	4289890697 (0xFFB28989)
YUV	149.2590, -6.0437, 25.2059
Hunter-Lab	54.0023, 10.6781, 7.4786

Details

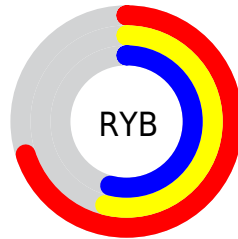
The HunterLab color $54.0023, 10.6781, 7.4786$ is a light color, and the websafe version is hex $CC9999$. A complement of this color would be $63.5393, -14.9127, -0.4114$, and the grayscale version is $54.9442, -2.9317, 2.9852$.

A 20% lighter version of the original color is $76.4668, 10.5781, 9.5314$, and $34.3360, 9.7851, 5.7591$ is the 20% darker color. If you saturate the color by 10%, you get $49.0352, 17.2925, 9.3387$, and if you desaturate by 10%, it is $59.3314, 4.3221, 5.7341$.

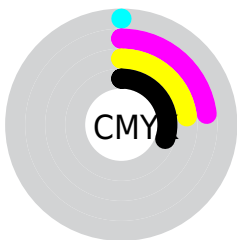
Distribution



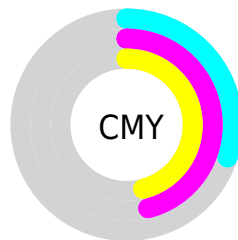
- Red (70%)
- Green (54%)
- Blue (54%)



- Red (70%)
- Yellow (54%)
- Blue (54%)



- Cyan (0%)
- Magenta (23%)
- Yellow (23%)
- Black (30%)



- Cyan (30%)
- Magenta (46%)
- Yellow (46%)

Brightness & Saturation Gradients

These gradients show how the HunterLab color 54.0023, 10.6781, 7.4786 changes by changing the brightness by 10 percent. The first figure shows a shift by +10% for each color and the second figure -10%.

Similar to the brightness gradients but the following saturation gradients show a change of the HunterLab color 54.0023, 10.6781, 7.4786 by changing the saturation by 10% instead.

■ 54.0023, 10.6781,
7.4786

■ 54.0023, 10.6781,
7.4786

172.6230, 10.2607,
16.2518

■ 43.8233, 10.3956,
6.5909

■ 76.3788, 10.9970,
9.3022

■ 34.3778, 10.0201,
5.7138

■ 88.4989, 11.0537,
10.2393

■ 25.7296, 9.5338,
4.8429

■ 101.1997, 11.0496,
11.1946

■ 17.9602, 8.9154,
3.9685

114.4560, 10.9894,
12.1684

■ 11.1833, 8.1354,
3.0798

128.2454, 10.8772,
13.1610

■ 3.2017, 21.0767,
2.2412

142.5479, 10.7164,

0.0000, NaN, NaN

14.1725

0.0000, NaN, NaN

157.3458, 10.5101,
15.2027

0.0000, NaN, NaN

■ 54.0023, 10.6781,
7.4786

■ 54.0023, 10.6781,
7.4786

■ 49.0352, 17.2925,
9.3387

■ 59.3314, 4.3221,
5.7341

■ 44.4963, 24.1145,
11.2977

■ 64.9625, -1.7642,
4.1002

■ 40.4710, 30.9933,
13.3126

■ 70.8525, -7.6029,
2.5679

■ 37.0545, 37.6406,
15.2937

■ 76.9660, -13.2234,
1.1249

■ 34.3414, 43.6048,
17.0965

■ 83.2750, -18.6572,
-0.2415

■ 32.4025, 48.3318,
18.5402

■ 89.7570, -23.9341,
-1.5429

■ 31.2501, 51.3587,
19.4707

■ 93.9175, -27.1887,
-2.3302

■ 30.7658, 52.6847,
19.8801

Harmonies

Analogous

The Analogous color harmony consists of three colors that are next to each other on the color wheel.



54.0035, 11.5162, 0.8599



54.0023, 10.6781, 7.4786



54.0035, 6.1042, 12.2353

Triad

The Triadic color harmony groups three colors that are evenly spaced from another and form a triangle on the color wheel.



54.0035, 10.6761, 7.4795



54.0035, -13.2633, 10.5859



54.0035, -5.0118, -11.7912

Complementary

The Complementary color scheme is a pair of colors which are on the opposite of each other on the color wheel.



54.0023, 10.6781, 7.4786



63.5393, -14.9127, -0.4114

Split Complementary

Split-complementary colors differ from the complementary color scheme. The scheme consists of three colors, the original color and two neighbors of the complement color.



54.0035, -11.3210, -8.3736



54.0023, 10.6781, 7.4786



54.0035, -15.9181, 4.9396

Square

The Square scheme is like the rectangle color scheme, but the four colors are evenly spaced on the color wheel.



54.0035, 10.6761, 7.4795



54.0035, -7.7902, 13.8583



54.0035, -15.2262, -2.0323



54.0035, 2.2031, -10.8774

Rectangle

The Rectangle color scheme consists of four colors that form a rectangle on the color wheel.



54.0023, 10.6781, 7.4786



54.0035, 1.6809, 13.9941



54.0035, -15.2262, -2.0323



54.0035, -7.3029, -11.0960

Sweetspot

The Sweet Spot groups the original color and five complimentary colors.



54.0035, 10.6761, 7.4795



84.3359, 0.9324, 6.4035



55.2911, 17.3375, -10.7924



39.4857, 0.6649, 3.0746



95.4677, -5.0939, 5.1869



42.2927, -2.2566, 2.2978

Same Dimension

The Same Dimension uses a secret algorithm to generate beautiful new colors.



54.0035, 10.6761, 7.4795



69.0104, 19.1928, 11.4185



59.6280, 0.4781, 13.2177



29.1640, 0.9660, 2.4301



26.0242, 44.5644, 16.8162



4.6166, 7.9035, 2.9831

Inverse Universe

The Inverse Universe completely reimagines the original color for something new.



63.5393, -14.9127, -0.4114



84.7296, -23.1511, -1.6435



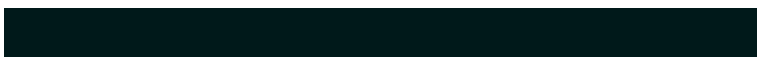
57.2858, -5.2305, -8.3857



31.0346, -4.0260, 0.8915



50.0780, -26.5462, -5.2876



8.8831, -4.7091, -0.9376

Previews

White Background



This preview shows how the HunterLab color 54.0023, 10.6781, 7.4786 looks on a white background.

Color Contrast Check

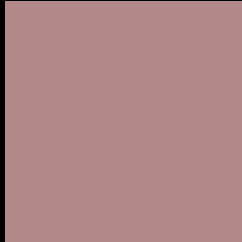
Large Text (above 18pt) WCAG AA ✓ Pass

Any Text WCAG AA ✗ Fail

Large Text (above 18pt) WCAG AAA ✗ Fail

Any Text WCAG AAA ✗ Fail

Black Background



This preview shows how the HunterLab color 54.0023, 10.6781, 7.4786 looks on a black background.

Color Contrast Check

Large Text (above 18pt) WCAG AA ✓ Pass

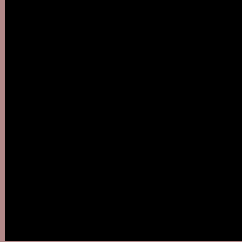
Any Text WCAG AA ✓ Pass

Large Text (above 18pt) WCAG AAA ✓ Pass

Any Text WCAG AAA × Fail

If you want to check with other color combinations, try the [Color Contrast Checker](#).

HunterLab 54.0023, 10.6781, 7.4786 Background



This preview shows how black text looks on a background with the HunterLab color 54.0023, 10.6781, 7.4786.



This preview shows how white text looks on a background with the HunterLab color 54.0023, 10.6781,

Color Blindness Simulation

Color vision deficiency is a very complex topic, and I could not describe the different causes any better than Wikipedia does, so if you want to learn more, you should check out their [article about color blindness](#).

Dichromacy



Original Color

54.0023, 10.6781, 7.4786

Protanopia

54.2215, -2.4512, 5.3848

Deuteranopia

54.0653, 3.9137, 7.8398



Tritanopia

54.0993, 12.8330, 3.7571

Trichromacy



Original Color

54.0023, 10.6781, 7.4786

Protanomaly

53.9587, 2.3470, 6.0279

Deuteranomaly

53.9257, 6.2561, 7.7287

Tritanomaly

54.0141, 12.3905, 4.9752

Monochromacy



Original Color

54.0023, 10.6781, 7.4786

Achromatopsia

54.8219, -2.9252, 2.9786

Achromatomaly

54.5607, 1.7942, 4.5414

CSS Examples

Text

The CSS property to change the color of the text to HunterLab 54.0023, 10.6781, 7.4786 is called "color". The color property can be set on classes, ids or directly on the HTML element.

This example shows how text in the color `rgb(178, 137, 137)` looks like.

```
.text, #text, p{  
    color:rgb(178, 137, 137)  
}
```

If you want to add a text shadow in that color use the text-shadow property, you can generate a text shadow directly with our [CSS Text Shadow Generator](#).

Here you see how black text with a 4 pixel rgb(178, 137, 137) colored shadow looks like.

```
.shadow{ text-shadow: 4px 4px 2px rgb(178, 137, 137) }
```

Border

The CSS property to change the border of an element to HunterLab 54.0023, 10.6781, 7.4786 is called "border". The border property can be set on classes, ids or directly on the HTML element.

This example shows the color as border, it can be applied via the CSS property "border" or "border-color".

```
.border, #border, table{ border:4px solid rgb(178, 137, 137) }
```


If only the border color should be changed use the property `border-color`.

```
.border{ border-color:rgb(178, 137, 137) }
```

If you want to add a box shadow in that color use:

Here you see how a box with a 4 pixel `rgb(178, 137, 137)` colored shadow looks like.

```
.boxshadow{ -moz-box-shadow:4px 4px 4px  
4px rgb(178, 137, 137); -webkit-box-  
shadow:4px 4px 4px 4px rgb(178, 137, 137);  
box-shadow:4px 4px 4px 4px rgb(178, 137,  
137) }
```

Background

The CSS property to change the background color of an element to HunterLab 54.0023, 10.6781, 7.4786 is called "background". The background property can be set on classes, ids or directly on the HTML element.

```
.background, #background, body{  
background: rgb(178, 137, 137) }
```

If only the background color should be changed can be used:

```
.background{ background-color: rgb(178,  
137, 137) }
```

This example shows the color as background, it is applied via the CSS property "background".

To optimize and compress your CSS code, you can use our [online CSS compressor and optimizer](#) based on csstidy. If you want to create a linear or radial gradient as background or border, check our [CSS Gradient Generator](#).

Hey! You found this booklet interesting? Support Converting Colors with the new Membership Option!

The pro membership hides all ads, plus gives you double the colors in the color bucket, and more awesome pro features!

[Learn more, Memberships starting at \\$2.50/m!](#)

**Follow me
on Twitter!**

@ConvertingColor