

Converting Colors

HunterLab(54.0307, 3.4955,
21.6302)

Have a look what the booklet for
HunterLab(54.0307, 3.4955,
21.6302) contains.

HunterLab(54.0417, 3.4495, 21.7425)	3
<i>Conversions</i>	4
<i>Details</i>	6
<i>Harmonies</i>	12
<i>Previews</i>	24
<i>Color Blindness Simulation</i>	28
<i>CSS Examples</i>	31

Color

**HunterLab(54.0417, 3.4495,
21.7425)**

Conversions

Conversions Part 1

Format	Color
Hex	B18D5E
RGB	177, 141, 94
RGB Percent	69%, 55%, 37%
CMY	0.3059, 0.4470, 0.6314
CMYK	0.00, 0.20, 0.47, 0.31
HSL	34°, 35%, 53%
HSV	34°, 47%, 69%
XYZ	29.6768, 29.2051, 14.6627
YIQ	146.4060, 36.5430, -6.9850

Conversions

Conversions Part 2

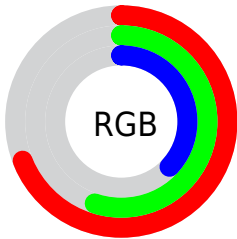
Format	Color
RYB	158, 177, 94
Decimal	11636062
CIELab	60.96, 7.47, 30.18
CIELCh	61, 31.091, 76.099
Yxy	29.2064, 0.4035, 0.3971
Android (android.graphics.Color)	4289826142 (0xFFB18D5E)
YUV	146.4060, -25.8362, 26.8309
Hunter-Lab	54.0417, 3.4495, 21.7425

Details

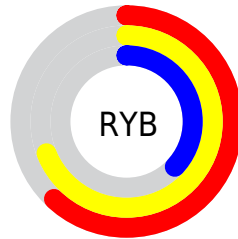
The HunterLab color $54.0417, 3.4495, 21.7425$ is a dark color, and the websafe version is hex $CC9966$. A complement of this color would be $46.3880, -2.1637, -24.6176$, and the grayscale version is $53.8681, -2.8743, 2.9268$.

A 20% lighter version of the original color is $76.5291, 2.6567, 26.4496$, and $34.3875, 3.5666, 16.6150$ is the 20% darker color. If you saturate the color by 10%, you get $51.7091, 5.7478, 24.0604$, and if you desaturate by 10%, it is $56.4840, 1.4464, 18.8310$.

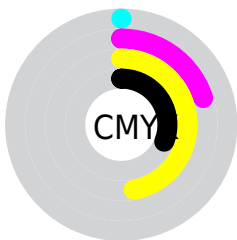
Distribution



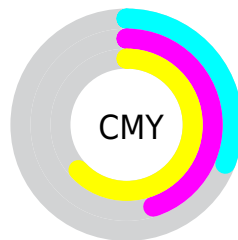
- Red (69%)
- Green (55%)
- Blue (37%)



- Red (62%)
- Yellow (69%)
- Blue (37%)



- Cyan (0%)
- Magenta (20%)
- Yellow (47%)
- Black (31%)



- Cyan (31%)
- Magenta (45%)
- Yellow (63%)

Brightness & Saturation Gradients

These gradients show how the HunterLab color 54.0417, 3.4495, 21.7425 changes by changing the brightness by 10 percent. The first figure shows a shift by +10% for each color and the second figure -10%.

Similar to the brightness gradients but the following saturation gradients show a change of the HunterLab color 54.0417, 3.4495, 21.7425 by changing the saturation by 10% instead.

■ 54.0417, 3.4495,
21.7425

■ 54.0417, 3.4495,
21.7425

172.6811, -0.0061,
40.9144

■ 43.8601, 3.5851,
19.2936

■ 76.4231, 2.9947,
26.3464

■ 34.4118, 3.6539,
16.7043

■ 88.5454, 2.6909,
28.5415

■ 25.7604, 3.6427,
13.9278

■ 101.2484, 2.3408,
30.6848

■ 17.9875, 3.5357,
11.2170

■ 114.5067, 1.9477,
32.7864

■ 11.2066, 3.3079,
7.8446

128.2980, 1.5144,
34.8544

■ 3.2658, 9.7917,
2.2861

142.6024, 1.0430,

0.0000, NaN, NaN

36.8951

0.0000, NaN, NaN

157.4021, 0.5356,
38.9137

0.0000, NaN, NaN

■ 54.0417, 3.4495,
21.7425

■ 54.0417, 3.4495,
21.7425

■ 51.7091, 5.7478,
24.0604

■ 56.4840, 1.4464,
18.8310

■ 49.4891, 8.3519,
25.7487

■ 59.0252, -0.2646,
15.3635

■ 47.3896, 11.2554,
26.7849

■ 61.6602, -1.6992,
11.3821

■ 45.4164, 14.4417,
27.1661

■ 64.3826, -2.8727,
6.9275

■ 43.5717, 17.8689,
26.9465

■ 67.1866, -3.8014,
2.0388

■ 43.0199, 18.9505,
26.8404

■ 70.0669, -4.5021,
-3.2475

■ 73.0185, -4.9908,
-8.8977

■ 76.0368, -5.2831,
-14.8814

■ 79.1178, -5.3937,
-21.1709

Harmonies

Analogous

The Analogous color harmony consists of three colors that are next to each other on the color wheel.



54.0430, 16.1763, 17.7966



54.0417, 3.4495, 21.7425



54.0430, -9.8511, 21.5973

Triad

The Triadic color harmony groups three colors that are evenly spaced from another and form a triangle on the color wheel.



54.0430, 3.4473, 21.7431



54.0430, -25.4918, -4.3102



54.0430, 16.9715, -16.9755

Complementary

The Complementary color scheme is a pair of colors which are on the opposite of each other on the color wheel.



54.0417, 3.4495, 21.7425



46.3880, -2.1637, -24.6176

Split Complementary

Split-complementary colors differ from the complementary color scheme. The scheme consists of three colors, the original color and two neighbors of the complement color.



54.0430, 4.4497, -26.3221



54.0417, 3.4495, 21.7425



54.0430, -19.6258, -17.8796

Square

The Square scheme is like the rectangle color scheme, but the four colors are evenly spaced on the color wheel.



54.0430, 3.4473, 21.7431



54.0430, -25.7035, 8.5078



54.0430, -8.9414, -26.6884



54.0430, 24.4839, -3.2876

Rectangle

The Rectangle color scheme consists of four colors that form a rectangle on the color wheel.



54.0417, 3.4495, 21.7425



54.0430, -17.2522, 19.2420



54.0430, -8.9414, -26.6884



54.0430, 13.1567, -20.8612

Sweetspot

The Sweet Spot groups the original color and five complimentary colors.



54.0430, 3.4473, 21.7431



83.4734, -2.7237, 13.7105



43.5902, 31.2298, -1.9696



38.5052, -1.1024, 6.9477



94.3401, -5.0338, 5.1257



41.3092, -2.2042, 2.2444

Same Dimension

The Same Dimension uses a secret algorithm to generate beautiful new colors.



54.0430, 3.4473, 21.7431



69.1810, 7.7134, 32.2168



64.1245, -14.9490, 29.4599



30.4584, -1.2478, 3.8501



36.7852, 15.7719, 22.9430



7.3427, 1.1618, 4.5449

Inverse Universe

The Inverse Universe completely reimagines the original color for something new.



46.3880, -2.1637, -24.6176



56.9816, -0.7700, -42.4149



37.1283, 16.7171, -43.2517



29.6921, -1.8536, -0.7188



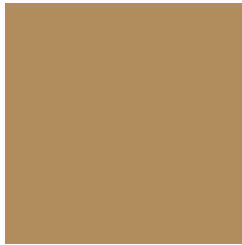
24.9756, 11.4582, -55.9522



5.5952, -0.1807, -6.6034

Previews

White Background



This preview shows how the HunterLab color 54.0417, 3.4495, 21.7425 looks on a white background.

Color Contrast Check

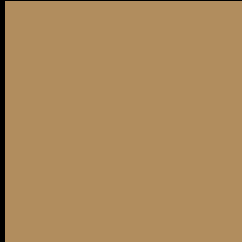
Large Text (above 18pt) WCAG AA ✓ Pass

Any Text WCAG AA × Fail

Large Text (above 18pt) WCAG AAA × Fail

Any Text WCAG AAA × Fail

Black Background



This preview shows how the HunterLab color 54.0417, 3.4495, 21.7425 looks on a black background.

Color Contrast Check

Large Text (above 18pt) WCAG AA ✓ Pass

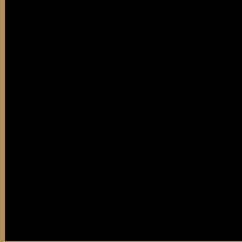
Any Text WCAG AA ✓ Pass

Large Text (above 18pt) WCAG AAA ✓ Pass

Any Text WCAG AAA × Fail

If you want to check with other color combinations, try the [Color Contrast Checker](#).

HunterLab 54.0417, 3.4495, 21.7425 Background



This preview shows how black text looks on a background with the HunterLab color 54.0417, 3.4495, 21.7425.



This preview shows how white text looks on a background with the HunterLab color 54.0417, 3.4495,

21.7425.

Color Blindness Simulation

Color vision deficiency is a very complex topic, and I could not describe the different causes any better than Wikipedia does, so if you want to learn more, you should check out their [article about color blindness](#).

Dichromacy



Original Color

54.0417, 3.4495, 21.7425

Protanopia

54.0237, -5.1909, 21.0531

Deuteranopia

54.1506, 3.8153, 21.8394



Tritanopia

54.1455, 14.2538, 4.2805

Trichromacy



Original Color

54.0417, 3.4495, 21.7425

Protanomaly

54.0222, -2.2962, 21.3659

Deuteranomaly

54.1506, 3.8153, 21.8394

Tritanomaly

53.9453, 9.9386, 11.7206

Monochromacy



Original Color

54.0417, 3.4495, 21.7425

Achromatopsia

53.6135, -2.8607, 2.9129

Achromatomaly

53.5228, -1.2559, 10.7163

CSS Examples

Text

The CSS property to change the color of the text to HunterLab 54.0417, 3.4495, 21.7425 is called "color". The color property can be set on classes, ids or directly on the HTML element.

This example shows how text in the color `rgb(177, 141, 94)` looks like.

```
.text, #text, p{  
    color:rgb(177, 141, 94)  
}
```

If you want to add a text shadow in that color use the text-shadow property, you can generate a text shadow directly with our [CSS Text Shadow Generator](#).

Here you see how black text with a 4 pixel rgb(177, 141, 94) colored shadow looks like.

```
.shadow{ text-shadow: 4px 4px 2px rgb(177, 141, 94) }
```

Border

The CSS property to change the border of an element to HunterLab 54.0417, 3.4495, 21.7425 is called "border". The border property can be set on classes, ids or directly on the HTML element.

This example shows the color as border, it can be applied via the CSS property "border" or "border-color".

```
.border, #border, table{ border:4px solid rgb(177, 141, 94) }
```


If only the border color should be changed use the property `border-color`.

```
.border{ border-color:rgb(177, 141, 94) }
```

If you want to add a box shadow in that color use:

Here you see how a box with a 4 pixel `rgb(177, 141, 94)` colored shadow looks like.

```
.boxshadow{ -moz-box-shadow:4px 4px 4px  
4px rgb(177, 141, 94); -webkit-box-  
shadow:4px 4px 4px 4px rgb(177, 141, 94);  
box-shadow:4px 4px 4px 4px rgb(177, 141,  
94) }
```

Background

The CSS property to change the background color of an element to HunterLab 54.0417, 3.4495, 21.7425 is called "background". The background property can be set on classes, ids or directly on the HTML element.

```
.background, #background, body{  
background: rgb(177, 141, 94) }
```

If only the background color should be changed can be used:

```
.background{ background-color: rgb(177,  
141, 94) }
```

This example shows the color as background, it is applied via the CSS property "background".

To optimize and compress your CSS code, you can use our [online CSS compressor and optimizer](#) based on csstidy. If you want to create a linear or radial gradient as background or border, check our [CSS Gradient Generator](#).

Hey! You found this booklet interesting? Support Converting Colors with the new Membership Option!

The pro membership hides all ads, plus gives you double the colors in the color bucket, and more awesome pro features!

[Learn more, Memberships starting at \\$2.50/m!](#)

**Follow me
on Twitter!**

@ConvertingColor