

Converting Colors

HunterLab(54.0815, 13.2289,
8.3430)

Have a look what the booklet for
HunterLab(54.0815, 13.2289,
8.3430) contains.

HunterLab(53.9856, 13.2011, 8.3230)	3
<i>Conversions</i>	4
<i>Details</i>	6
<i>Harmonies</i>	12
<i>Previews</i>	24
<i>Color Blindness Simulation</i>	28
<i>CSS Examples</i>	31

Color

**HunterLab(53.9856, 13.2011,
8.3230)**

Conversions

Conversions Part 1

Format	Color
Hex	B78787
RGB	183, 135, 135
RGB Percent	72%, 53%, 53%
CMY	0.2824, 0.4706, 0.4706
CMYK	0.00, 0.26, 0.26, 0.28
HSL	0°, 25%, 62%
HSV	0°, 26%, 72%
XYZ	32.5655, 29.1445, 26.8307
YIQ	149.3520, 28.6080, 10.1760

Conversions

Conversions Part 2

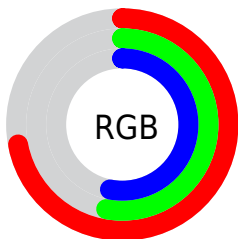
Format	Color
RYB	183, 135, 135
Decimal	12027783
CIELab	60.91, 18.37, 7.22
CIELCh	61, 19.733, 21.448
Yxy	29.1458, 0.3678, 0.3292
Android (android.graphics.Color)	4290217863 (0xFFB78787)
YUV	149.3520, -7.0755, 29.5093
Hunter-Lab	53.9856, 13.2011, 8.3230

Details

The HunterLab color **53.9856, 13.2011, 8.3230** is a light color, and the websafe version is hex **CC9999**. A complement of this color would be **65.1424, -16.8012, -0.9287**, and the grayscale version is **54.9845, -2.9338, 2.9874**.

A 20% lighter version of the original color is **76.2381, 14.0776, 10.2237**, and **34.3802, 12.2177, 6.5776** is the 20% darker color. If you saturate the color by 10%, you get **48.9886, 20.1157, 10.2815**, and if you desaturate by 10%, it is **59.3793, 6.5425, 6.4819**.

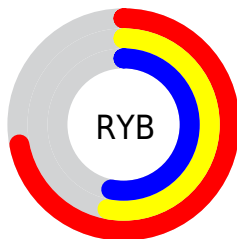
Distribution



Red (72%)

Green (53%)

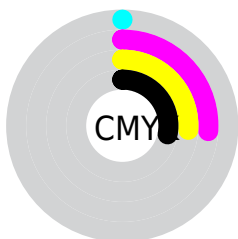
Blue (53%)



Red (72%)

Yellow (53%)

Blue (53%)

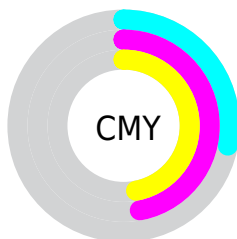


Cyan (0%)

Magenta (26%)

Yellow (26%)

Black (28%)



Cyan (28%)


Magenta (47%)


Yellow (47%)

Brightness & Saturation Gradients


These gradients show how the HunterLab color 53.9856, 13.2011, 8.3230 changes by changing the brightness by 10 percent. The first figure shows a shift by +10% for each color and the second figure -10%.


Similar to the brightness gradients but the following saturation gradients show a change of the HunterLab color 53.9856, 13.2011, 8.3230 by changing the saturation by 10% instead.


 53.9856, 13.2011,
8.3230

 53.9856, 13.2011,
8.3230


172.5985, 13.7854,
17.5677


 43.8077, 12.7830,
7.3661


 76.3601, 13.7725,
10.2709

 34.3635, 12.2649,
6.4133


 88.4792, 13.9478,
11.2647

 25.7165, 11.6284,
5.4584


 101.1792, 14.0576,
12.2737

 17.9486, 10.8519,
4.4883

114.4346, 14.1074,
13.2988

 11.1734, 9.9093,
3.5198

128.2231, 14.1016,
14.3405

 3.1742, 25.0438,
2.2219

142.5248, 14.0439,

0.0000, NaN, NaN

15.3991

0.0000, NaN, NaN

157.3220, 13.9375,
16.4748

0.0000, NaN, NaN

■ 53.9856, 13.2011,
8.3230

■ 53.9856, 13.2011,
8.3230

■ 48.9886, 20.1157,
10.2815

■ 59.3793, 6.5425,
6.4819

■ 44.4618, 27.2077,
12.3318

■ 65.1032, 0.1653,
4.7572

■ 40.4984, 34.2784,
14.4155

■ 71.1087, -5.9472,
3.1416

■ 37.1989, 40.9728,
16.4207

■ 77.3564, -11.8235,
1.6226

■ 34.6563, 46.7737,
18.1810

■ 83.8150, -17.4963,
0.1869

■ 32.9283, 51.1088,
19.5085

■ 90.4595, -22.9973,
-1.1777

■ 31.9883, 53.6223,
20.2825

■ 94.2376, -26.0019,
-1.9093

■ 31.7295, 54.3352,
20.5028

Harmonies

Analogous

The Analogous color harmony consists of three colors that are next to each other on the color wheel.



53.9869, 14.2615, 0.5732



53.9856, 13.2011, 8.3230



53.9869, 7.6929, 13.7454

Triad

The Triadic color harmony groups three colors that are evenly spaced from another and form a triangle on the color wheel.



53.9869, 13.1990, 8.3239



53.9869, -15.0884, 11.7640



53.9869, -5.2944, -14.8227

Complementary

The Complementary color scheme is a pair of colors which are on the opposite of each other on the color wheel.



53.9856, 13.2011, 8.3230



65.1424, -16.8012, -0.9287

Split Complementary

Split-complementary colors differ from the complementary color scheme. The scheme consists of three colors, the original color and two neighbors of the complement color.



53.9869, -12.7036, -10.7002



53.9856, 13.2011, 8.3230



53.9869, -18.1244, 5.2017

Square

The Square scheme is like the rectangle color scheme, but the four colors are evenly spaced on the color wheel.



53.9869, 13.1990, 8.3239



53.9869, -8.7349, 15.5071



53.9869, -17.2791, -3.0658



53.9869, 3.2283, -13.6414

Rectangle

The Rectangle color scheme consists of four colors that form a rectangle on the color wheel.



53.9856, 13.2011, 8.3230



53.9869, 2.4197, 15.7061



53.9869, -17.2791, -3.0658



53.9869, -7.9896, -13.9908

Sweetspot

The Sweet Spot groups the original color and five complimentary colors.



53.9869, 13.1990, 8.3239



85.6374, 1.8170, 6.7940



55.5107, 20.9967, -13.2769



39.6977, 1.4520, 3.3538



96.5975, -5.1542, 5.2483



43.2801, -2.3093, 2.3515

Same Dimension

The Same Dimension uses a secret algorithm to generate beautiful new colors.



53.9869, 13.1990, 8.3239



68.6436, 22.5152, 12.5056



60.5087, 1.1942, 14.8458



30.0205, 1.0053, 2.5051



26.5016, 45.3823, 17.1247



4.9762, 8.5195, 3.2155

Inverse Universe

The Inverse Universe completely reimagines the original color for something new.



65.1424, -16.8012, -0.9287



86.3879, -25.4091, -2.2806



57.7636, -5.4844, -10.4861



31.9539, -4.1543, 0.9149



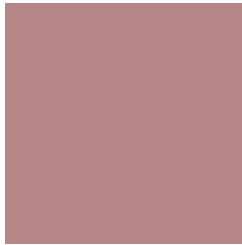
50.9973, -27.0337, -5.3841



9.5753, -5.0760, -1.0106

Previews

White Background



This preview shows how the HunterLab color 53.9856, 13.2011, 8.3230 looks on a white background.

Color Contrast Check

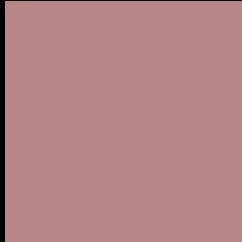
Large Text (above 18pt) WCAG AA ✓ Pass

Any Text WCAG AA × Fail

Large Text (above 18pt) WCAG AAA × Fail

Any Text WCAG AAA × Fail

Black Background



This preview shows how the HunterLab color 53.9856, 13.2011, 8.3230 looks on a black background.

Color Contrast Check

Large Text (above 18pt) WCAG AA ✓ Pass

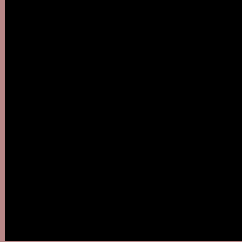
Any Text WCAG AA ✓ Pass

Large Text (above 18pt) WCAG AAA ✓ Pass

Any Text WCAG AAA × Fail

If you want to check with other color combinations, try the [Color Contrast Checker](#).

HunterLab 53.9856, 13.2011, 8.3230 Background



This preview shows how black text looks on a background with the HunterLab color 53.9856, 13.2011, 8.3230.



This preview shows how white text looks on a background with the HunterLab color 53.9856, 13.2011,

Color Blindness Simulation

Color vision deficiency is a very complex topic, and I could not describe the different causes any better than Wikipedia does, so if you want to learn more, you should check out their [article about color blindness](#).

Dichromacy



Original Color

53.9856, 13.2011, 8.3230

Protanopia

54.1939, -2.6021, 5.7796

Deuteranopia

54.0132, 3.6345, 8.5886



Tritanopia

54.0871, 15.3321, 4.6729

Trichromacy



Original Color

53.9856, 13.2011, 8.3230

Protanomaly

54.1253, 2.8554, 6.6449

Deuteranomaly

53.8118, 7.1637, 8.4337

Tritanomaly

54.0034, 14.9011, 5.8713

Monochromacy



Original Color

53.9856, 13.2011, 8.3230

Achromatopsia

54.8219, -2.9252, 2.9786

Achromatomaly

54.3481, 2.4541, 4.7472

CSS Examples

Text

The CSS property to change the color of the text to HunterLab 53.9856, 13.2011, 8.3230 is called "color". The color property can be set on classes, ids or directly on the HTML element.

This example shows how text in the color `rgb(183, 135, 135)` looks like.

```
.text, #text, p{  
    color:rgb(183, 135, 135)  
}
```

If you want to add a text shadow in that color use the text-shadow property, you can generate a text shadow directly with our [CSS Text Shadow Generator](#).

Here you see how black text with a 4 pixel rgb(183, 135, 135) colored shadow looks like.

```
.shadow{ text-shadow: 4px 4px 2px rgb(183, 135, 135) }
```

Border

The CSS property to change the border of an element to HunterLab 53.9856, 13.2011, 8.3230 is called "border". The border property can be set on classes, ids or directly on the HTML element.

This example shows the color as border, it can be applied via the CSS property "border" or "border-color".

```
.border, #border, table{ border:4px solid rgb(183, 135, 135) }
```


If only the border color should be changed use the property border-color.

```
.border{ border-color:rgb(183, 135, 135) }
```

If you want to add a box shadow in that color use:

Here you see how a box with a 4 pixel rgb(183, 135, 135) colored shadow looks like.

```
.boxshadow{ -moz-box-shadow:4px 4px 4px  
4px rgb(183, 135, 135); -webkit-box-  
shadow:4px 4px 4px 4px rgb(183, 135, 135);  
box-shadow:4px 4px 4px 4px rgb(183, 135,  
135) }
```

Background

The CSS property to change the background color of an element to HunterLab 53.9856, 13.2011, 8.3230 is called "background". The background property can be set on classes, ids or directly on the HTML element.

```
.background, #background, body{  
background: rgb(183, 135, 135) }
```

If only the background color should be changed can be used:

```
.background{ background-color: rgb(183,  
135, 135) }
```

This example shows the color as background, it is applied via the CSS property "background".

To optimize and compress your CSS code, you can use our [online CSS compressor and optimizer](#) based on csstidy. If you want to create a linear or radial gradient as background or border, check our [CSS Gradient Generator](#).

Hey! You found this booklet interesting? Support Converting Colors with the new Membership Option!

The pro membership hides all ads, plus gives you double the colors in the color bucket, and more awesome pro features!

[Learn more, Memberships starting at \\$2.50/m!](#)

**Follow me
on Twitter!**

@ConvertingColor