

Converting Colors

HunterLab(54.1042, 11.7090,
22.9437)

Have a look what the booklet for
HunterLab(54.1042, 11.7090,
22.9437) contains.

HunterLab(54.1042, 11.7090, 22.9437)	3
<i>Conversions</i>	4
<i>Details</i>	6
<i>Harmonies</i>	12
<i>Previews</i>	24
<i>Color Blindness Simulation</i>	28
<i>CSS Examples</i>	31

Color

**HunterLab(54.1042, 11.7090,
22.9437)**

Conversions

Conversions Part 1

Format	Color
Hex	C0875A
RGB	192, 135, 90
RGB Percent	75%, 53%, 35%
CMY	0.2471, 0.4706, 0.6471
CMYK	0.00, 0.30, 0.53, 0.25
HSL	26°, 45%, 55%
HSV	26°, 53%, 75%
XYZ	32.2477, 29.2726, 13.6235
YIQ	146.9130, 48.4170, -1.9110

Conversions

Conversions Part 2

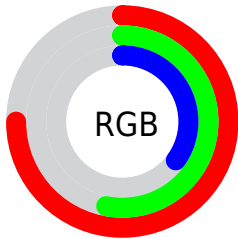
Format	Color
R_{YB}	192, 171, 90
Decimal	12617562
CIE _{Lab}	61.02, 16.74, 32.76
CIE _{LCh}	61, 36.793, 62.939
Yxy	29.2741, 0.4291, 0.3896
Android (android.graphics.Color)	4290807642 (0xFFC0875A)
YUV	146.9130, -28.0581, 39.5413
Hunter-Lab	54.1042, 11.7090, 22.9437

Details

The HunterLab color **54.1042, 11.7090, 22.9437** is a dark color, and the websafe version is hex **CC9966**. The color can be described as middle muted orange. A complement of this color would be **51.8129, -7.4249, -25.2688**, and the grayscale version is **54.0775, -2.8854, 2.9381**.

A 20% lighter version of the original color is **76.4191, 12.4286, 27.7557**, and **34.3836, 10.8278, 17.4355** is the 20% darker color. If you saturate the color by 10%, you get **51.1308, 15.6418, 24.9065**, and if you desaturate by 10%, it is **57.2632, 8.1031, 20.3881**.

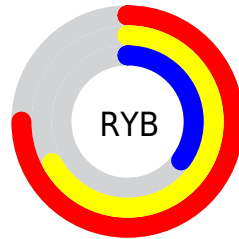
Distribution



Red (75%)

Green (53%)

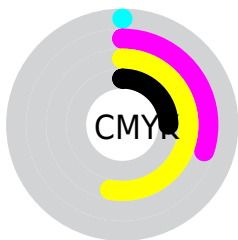
Blue (35%)



Red (75%)

Yellow (67%)

Blue (35%)

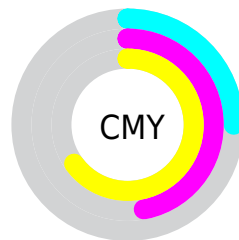


Cyan (0%)

Magenta (30%)

Yellow (53%)

Black (25%)



Cyan (25%)

Magenta (47%)

Yellow (65%)

Brightness & Saturation Gradients

These gradients show how the HunterLab color 54.1042, 11.7090, 22.9437 changes by changing the brightness by 10 percent. The first figure shows a shift by +10% for each color and the second figure -10%.

Similar to the brightness gradients but the following saturation gradients show a change of the HunterLab color 54.1042, 11.7090, 22.9437 by changing the saturation by 10% instead.

■ 54.1042, 11.7090,
22.9437

■ 54.1042, 11.7090,
22.9437

172.7733, 11.6970,
43.3082

■ 43.9184, 11.3710,
20.3156

■ 76.4933, 12.1296,
27.8679

■ 34.4656, 10.9378,
17.5312

■ 88.6191, 12.2343,
30.2079

■ 25.8092, 10.3907,
14.5414

■ 101.3255, 12.2764,
32.4877

■ 18.0309, 9.7081,
11.8212

■ 114.5870, 12.2608,
34.7187

■ 11.2437, 8.8619,
7.8706

128.3814, 12.1917,
36.9097

■ 3.3649, 21.4964,
2.3554

142.6888, 12.0727,

0.0000, NaN, NaN

39.0680

0.0000, NaN, NaN

157.4914, 11.9069,
41.1992

0.0000, NaN, NaN

■ 54.1042, 11.7090,
22.9437

■ 54.1042, 11.7090,
22.9437

■ 51.1308, 15.6418,
24.9065

■ 57.2632, 8.1031,
20.3881

■ 48.3567, 19.8973,
26.2196

■ 60.5871, 4.8286,
17.2973

■ 45.8013, 24.4377,
26.8441

■ 64.0620, 1.8696,
13.7302

■ 43.4811, 29.1955,
26.7754

■ 67.6742, -0.7929,
9.7409

■ 42.0220, 32.5037,
26.4628

■ 71.4113, -3.1807,
5.3776

■ 75.2625, -5.3162,
0.6827

■ 79.2182, -7.2215,
-4.3072

■ 83.2701, -8.9176,
-9.5602

■ 87.1169, -12.0556,
-10.9181

Harmonies

Analogous

The Analogous color harmony consists of three colors that are next to each other on the color wheel.



54.1055, 25.1793, 16.4722



54.1042, 11.7090, 22.9437



54.1055, -4.4455, 24.6563

Triad

The Triadic color harmony groups three colors that are evenly spaced from another and form a triangle on the color wheel.



54.1055, 11.7064, 22.9444



54.1055, -30.1197, 1.4356



54.1055, 14.7245, -27.5244

Complementary

The Complementary color scheme is a pair of colors which are on the opposite of each other on the color wheel.



54.1042, 11.7090, 22.9437



51.8129, -7.4249, -25.2688

Split Complementary

Split-complementary colors differ from the complementary color scheme. The scheme consists of three colors, the original color and two neighbors of the complement color.



54.1055, -1.3164, -34.8107



54.1042, 11.7090, 22.9437



54.1055, -26.1945, -15.3381

Square

The Square scheme is like the rectangle color scheme, but the four colors are evenly spaced on the color wheel.



54.1055, 11.7064, 22.9444



54.1055, -27.4735, 14.5581



54.1055, -16.0860, -29.8114



54.1055, 27.0582, -11.9975

Rectangle

The Rectangle color scheme consists of four colors that form a rectangle on the color wheel.



54.1042, 11.7090, 22.9437



54.1055, -14.2780, 23.4397



54.1055, -16.0860, -29.8114



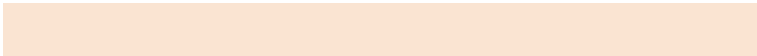
54.1055, 9.5258, -31.1927

Sweetspot

The Sweet Spot groups the original color and five complimentary colors.



54.1055, 11.7064, 22.9444



89.5535, 0.0141, 14.8512



45.4432, 41.1576, -7.7236



41.0106, 0.3476, 7.3991



98.8636, -5.2751, 5.3714



45.2661, -2.4153, 2.4594

Same Dimension

The Same Dimension uses a secret algorithm to generate beautiful new colors.



54.1055, 11.7064, 22.9444



68.0949, 22.1123, 33.9318



68.3566, -12.6271, 33.5098



32.8525, -0.8179, 3.8750



34.6875, 26.1256, 21.8317



8.1056, 3.3800, 5.0538

Inverse Universe

The Inverse Universe completely reimagines the original color for something new.



51.8129, -7.4249, -25.2688



64.3751, -8.2893, -43.7000



38.0687, 17.7207, -53.9005



32.6505, -2.5525, -0.4178



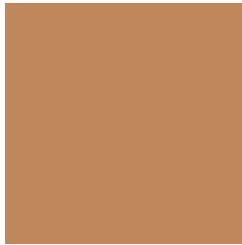
31.3594, 2.2627, -44.0810



7.4862, -1.1428, -6.8900

Previews

White Background



This preview shows how the HunterLab color 54.1042, 11.7090, 22.9437 looks on a white background.

Color Contrast Check

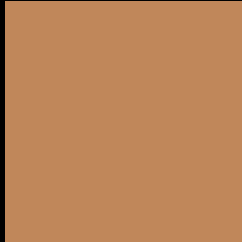
Large Text (above 18pt) WCAG AA ✓ Pass

Any Text WCAG AA × Fail

Large Text (above 18pt) WCAG AAA × Fail

Any Text WCAG AAA × Fail

Black Background



This preview shows how the HunterLab color 54.1042, 11.7090, 22.9437 looks on a black background.

Color Contrast Check

Large Text (above 18pt) WCAG AA ✓ Pass

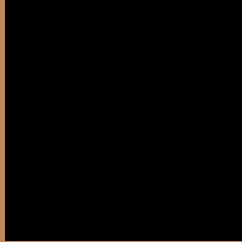
Any Text WCAG AA ✓ Pass

Large Text (above 18pt) WCAG AAA ✓ Pass

Any Text WCAG AAA × Fail

If you want to check with other color combinations, try the [Color Contrast Checker](#).

HunterLab 54.1042, 11.7090, 22.9437 Background



This preview shows how black text looks on a background with the HunterLab color 54.1042, 11.7090, 22.9437.



This preview shows how white text looks on a background with the HunterLab color 54.1042, 11.7090,

22.9437.

Color Blindness Simulation

Color vision deficiency is a very complex topic, and I could not describe the different causes any better than Wikipedia does, so if you want to learn more, you should check out their [article about color blindness](#).

Dichromacy



Original Color

54.1042, 11.7090, 22.9437

Protanopia

54.3903, -5.4138, 21.6185

Deuteranopia

54.1800, 3.7535, 23.1086



Tritanopia

54.1298, 21.5980, 6.9780

Trichromacy



Original Color

54.1042, 11.7090, 22.9437

Protanomaly

54.0425, 0.5888, 21.9495

Deuteranomaly

54.2004, 6.5936, 23.1748

Tritanomaly

54.0511, 17.9350, 13.7775

Monochromacy



Original Color

54.1042, 11.7090, 22.9437

Achromatopsia

54.0158, -2.8821, 2.9348

Achromatomaly

53.7939, 1.0692, 11.4109

CSS Examples

Text

The CSS property to change the color of the text to HunterLab 54.1042, 11.7090, 22.9437 is called "color". The color property can be set on classes, ids or directly on the HTML element.

This example shows how text in the color `rgb(192, 135, 90)` looks like.

```
.text, #text, p{  
    color:rgb(192, 135, 90)  
}
```

If you want to add a text shadow in that color use the text-shadow property, you can generate a text shadow directly with our [CSS Text Shadow Generator](#).

Here you see how black text with a 4 pixel rgb(192, 135, 90) colored shadow looks like.

```
.shadow{ text-shadow: 4px 4px 2px rgb(192, 135, 90) }
```

Border

The CSS property to change the border of an element to HunterLab 54.1042, 11.7090, 22.9437 is called "border". The border property can be set on classes, ids or directly on the HTML element.

This example shows the color as border, it can be applied via the CSS property "border" or "border-color".

```
.border, #border, table{ border:4px solid rgb(192, 135, 90) }
```


If only the border color should be changed use the property `border-color`.

```
.border{ border-color:rgb(192, 135, 90) }
```

If you want to add a box shadow in that color use:

Here you see how a box with a 4 pixel `rgb(192, 135, 90)` colored shadow looks like.

```
.boxshadow{ -moz-box-shadow:4px 4px 4px  
4px rgb(192, 135, 90); -webkit-box-  
shadow:4px 4px 4px 4px rgb(192, 135, 90);  
box-shadow:4px 4px 4px 4px rgb(192, 135,  
90) }
```

Background

The CSS property to change the background color of an element to HunterLab 54.1042, 11.7090, 22.9437 is called "background". The background property can be set on classes, ids or directly on the HTML element.

```
.background, #background, body{  
background: rgb(192, 135, 90) }
```

If only the background color should be changed can be used:

```
.background{ background-color: rgb(192,  
135, 90) }
```

This example shows the color as background, it is applied via the CSS property "background".

To optimize and compress your CSS code, you can use our [online CSS compressor and optimizer](#) based on csstidy. If you want to create a linear or radial gradient as background or border, check our [CSS Gradient Generator](#).

Hey! You found this booklet interesting? Support Converting Colors with the new Membership Option!

The pro membership hides all ads, plus gives you double the colors in the color bucket, and more awesome pro features!

[Learn more, Memberships starting at \\$2.50/m!](#)

**Follow me
on Twitter!**

@ConvertingColor