

Converting Colors

HunterLab(54.1092, 17.8194,
6.0349)

Have a look what the booklet for
HunterLab(54.1092, 17.8194,
6.0349) contains.

HunterLab(54.0781, 17.7392, 6.0053)	3
<i>Conversions</i>	4
<i>Details</i>	6
<i>Harmonies</i>	12
<i>Previews</i>	24
<i>Color Blindness Simulation</i>	28
<i>CSS Examples</i>	31

Color

**HunterLab(54.0781, 17.7392,
6.0053)**

Conversions

Conversions Part 1

Format	Color
Hex	BD848D
RGB	189, 132, 141
RGB Percent	74%, 52%, 55%
CMY	0.2588, 0.4823, 0.4471
CMYK	0.00, 0.30, 0.25, 0.26
HSL	351°, 30%, 63%
HSV	351°, 30%, 74%
XYZ	34.0452, 29.2444, 29.0496
YIQ	150.0690, 31.0830, 14.8830

Conversions

Conversions Part 2

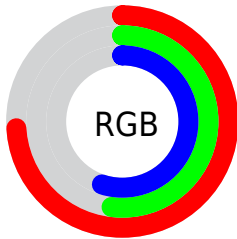
Format	Color
R_{YB}	189, 132, 141
Decimal	12420237
CIE _{Lab}	61.00, 23.21, 4.00
CIE _{LCh}	61, 23.551, 9.782
Yxy	29.2458, 0.3687, 0.3167
Android (android.graphics.Color)	4290610317 (0xFFBD848D)
YUV	150.0690, -4.4710, 34.1425
Hunter-Lab	54.0781, 17.7392, 6.0053

Details

The HunterLab color $54.0781, 17.7392, 6.0053$ is a light color, and the websafe version is hex $CC9999$. A complement of this color would be $66.7808, -20.7673, 2.4479$, and the grayscale version is $55.2632, -2.9487, 3.0026$.

A 20% lighter version of the original color is $76.5838, 18.4470, 7.5426$, and $34.4358, 16.1281, 4.4604$ is the 20% darker color. If you saturate the color by 10%, you get $49.1277, 25.2453, 7.2648$, and if you desaturate by 10%, it is $59.4583, 10.3773, 5.0483$.

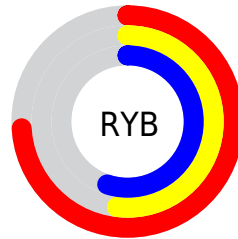
Distribution



Red (74%)

Green (52%)

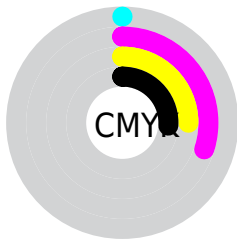
Blue (55%)



Red (74%)

Yellow (52%)

Blue (55%)

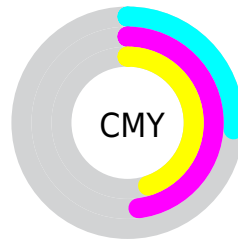


Cyan (0%)

Magenta (30%)

Yellow (25%)

Black (26%)



Cyan (26%)

Magenta (48%)

Yellow (45%)

Brightness & Saturation Gradients

These gradients show how the HunterLab color 54.0781, 17.7392, 6.0053 changes by changing the brightness by 10 percent. The first figure shows a shift by +10% for each color and the second figure -10%.

Similar to the brightness gradients but the following saturation gradients show a change of the HunterLab color 54.0781, 17.7392, 6.0053 by changing the saturation by 10% instead.

■ 54.0781, 17.7392,
6.0053

■ 54.0781, 17.7392,
6.0053

172.7347, 20.0446,
13.9871

■ 43.8940, 17.0919,
5.2331

■ 76.4640, 18.7411,
7.6212

■ 34.4431, 16.3347,
4.4818

■ 88.5882, 19.1194,
8.4633

■ 25.7888, 15.4491,
3.7503

■ 101.2932, 19.4252,
9.3283

■ 18.0127, 14.4163,
3.0343

114.5534, 19.6643,
10.2160

■ 11.2282, 13.2221,
2.3244

128.3465, 19.8418,
11.1261

■ 3.3238, 30.2487,
2.3267

142.6527, 19.9620,

0.0000, NaN, NaN

12.0582

0.0000, NaN, NaN

157.4541, 20.0285,
13.0120

0.0000, NaN, NaN

■ 54.0781, 17.7392,
6.0053

■ 54.0781, 17.7392,
6.0053

■ 49.1277, 25.2453,
7.2648

■ 59.4583, 10.3773,
5.0483

■ 44.6861, 32.7540,
8.8498

■ 65.1965, 3.2276,
4.3531

■ 40.8500, 39.9824,
10.7563

■ 71.2394, -3.6997,
3.8816

■ 37.7189, 46.4881,
12.9222

■ 77.5435, -10.4174,
3.5982

■ 35.3766, 51.7066,
15.2059

■ 84.0743, -16.9485,
3.4726

■ 33.8595, 55.1220,
17.3930

■ 90.8044, -23.3194,
3.4795

■ 33.0329, 56.8510,
19.1655

■ 94.5483, -25.0290,
-0.1483

■ 94.6355, -24.5326,
-1.3881

Harmonies

Analogous

The Analogous color harmony consists of three colors that are next to each other on the color wheel.



54.0794, 16.6877, -3.8792



54.0781, 17.7392, 6.0053



54.0794, 12.9550, 13.5341

Triad

The Triadic color harmony groups three colors that are evenly spaced from another and form a triangle on the color wheel.



54.0794, 17.7370, 6.0063



54.0794, -14.8275, 15.3642



54.0794, -9.4744, -17.5553

Complementary

The Complementary color scheme is a pair of colors which are on the opposite of each other on the color wheel.



54.0781, 17.7392, 6.0053



66.7808, -20.7673, 2.4479

Split Complementary

Split-complementary colors differ from the complementary color scheme. The scheme consists of three colors, the original color and two neighbors of the complement color.



54.0794, -17.0948, -10.3459



54.0781, 17.7392, 6.0053



54.0794, -20.0236, 8.9793

Square

The Square scheme is like the rectangle color scheme, but the four colors are evenly spaced on the color wheel.



54.0794, 17.7370, 6.0063



54.0794, -6.1671, 18.2393



54.0794, -20.8219, -0.3092



54.0794, 0.4702, -18.7540

Rectangle

The Rectangle color scheme consists of four colors that form a rectangle on the color wheel.



54.0781, 17.7392, 6.0053



54.0794, 7.2971, 16.6637



54.0794, -20.8219, -0.3092



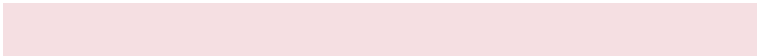
54.0794, -12.3718, -15.6989

Sweetspot

The Sweet Spot groups the original color and five complimentary colors.



54.0794, 17.7370, 6.0063



88.0525, 3.3675, 5.7491



54.6090, 22.5767, -18.2260



40.2983, 2.1976, 2.7176



97.7295, -5.2146, 5.3098



44.2712, -2.3622, 2.4053

Same Dimension

The Same Dimension uses a secret algorithm to generate beautiful new colors.



54.0794, 17.7370, 6.0063



68.0470, 30.1741, 9.0703



58.8381, 6.9117, 14.3776



30.9197, 1.2534, 2.0280



27.1095, 46.6840, 15.5162



5.4380, 9.5074, 2.0051

Inverse Universe

The Inverse Universe completely reimagines the original color for something new.



54.0794, 17.7370, 6.0063



68.0470, 30.1741, 9.0703



61.0984, -10.2877, -9.2508



30.9197, 1.2534, 2.0280



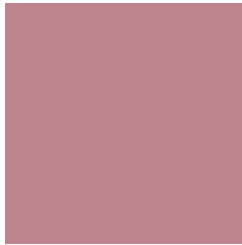
27.1095, 46.6840, 15.5162



5.4380, 9.5074, 2.0051

Previews

White Background



This preview shows how the HunterLab color 54.0781, 17.7392, 6.0053 looks on a white background.

Color Contrast Check

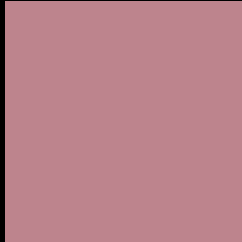
Large Text (above 18pt) WCAG AA ✓ Pass

Any Text WCAG AA ✗ Fail

Large Text (above 18pt) WCAG AAA ✗ Fail

Any Text WCAG AAA ✗ Fail

Black Background



This preview shows how the HunterLab color 54.0781, 17.7392, 6.0053 looks on a black background.

Color Contrast Check

Large Text (above 18pt) WCAG AA ✓ Pass

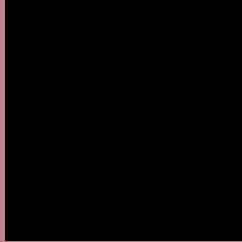
Any Text WCAG AA ✓ Pass

Large Text (above 18pt) WCAG AAA ✓ Pass

Any Text WCAG AAA × Fail

If you want to check with other color combinations, try the [Color Contrast Checker](#).

HunterLab 54.0781, 17.7392, 6.0053 Background



This preview shows how black text looks on a background with the HunterLab color 54.0781, 17.7392, 6.0053.



This preview shows how white text looks on a background with the HunterLab color 54.0781, 17.7392,

Color Blindness Simulation

Color vision deficiency is a very complex topic, and I could not describe the different causes any better than Wikipedia does, so if you want to learn more, you should check out their [article about color blindness](#).

Dichromacy



Original Color

54.0781, 17.7392, 6.0053

Protanopia

54.3336, -1.6634, 2.4234

Deuteranopia

54.0457, 4.0081, 6.5766



Tritanopia

54.1058, 17.8800, 5.6095

Trichromacy



Original Color

54.0781, 17.7392, 6.0053

Protanomaly

54.1423, 4.7214, 3.6652

Deuteranomaly

53.9157, 9.1991, 6.0996

Tritanomaly

54.1058, 17.8800, 5.6095

Monochromacy



Original Color

54.0781, 17.7392, 6.0053

Achromatopsia

55.2257, -2.9467, 3.0005

Achromatomaly

54.4463, 4.3800, 3.5668

CSS Examples

Text

The CSS property to change the color of the text to HunterLab 54.0781, 17.7392, 6.0053 is called "color". The color property can be set on classes, ids or directly on the HTML element.

This example shows how text in the color `rgb(189, 132, 141)` looks like.

```
.text, #text, p{  
    color:rgb(189, 132, 141)  
}
```

If you want to add a text shadow in that color use the text-shadow property, you can generate a text shadow directly with our [CSS Text Shadow Generator](#).

Here you see how black text with a 4 pixel rgb(189, 132, 141) colored shadow looks like.

```
.shadow{ text-shadow: 4px 4px 2px rgb(189, 132, 141) }
```

Border

The CSS property to change the border of an element to HunterLab 54.0781, 17.7392, 6.0053 is called "border". The border property can be set on classes, ids or directly on the HTML element.

This example shows the color as border, it can be applied via the CSS property "border" or "border-color".

```
.border, #border, table{ border:4px solid rgb(189, 132, 141) }
```


If only the border color should be changed use the property `border-color`.

```
.border{ border-color:rgb(189, 132, 141) }
```

If you want to add a box shadow in that color use:

Here you see how a box with a 4 pixel `rgb(189, 132, 141)` colored shadow looks like.

```
.boxshadow{ -moz-box-shadow:4px 4px 4px  
4px rgb(189, 132, 141); -webkit-box-  
shadow:4px 4px 4px 4px rgb(189, 132, 141);  
box-shadow:4px 4px 4px 4px rgb(189, 132,  
141) }
```

Background

The CSS property to change the background color of an element to HunterLab 54.0781, 17.7392, 6.0053 is called "background". The background property can be set on classes, ids or directly on the HTML element.

```
.background, #background, body{  
background: rgb(189, 132, 141) }
```

If only the background color should be changed can be used:

```
.background{ background-color: rgb(189,  
132, 141) }
```

This example shows the color as background, it is applied via the CSS property "background".

To optimize and compress your CSS code, you can use our [online CSS compressor and optimizer](#) based on csstidy. If you want to create a linear or radial gradient as background or border, check our [CSS Gradient Generator](#).

Hey! You found this booklet interesting? Support Converting Colors with the new Membership Option!

The pro membership hides all ads, plus gives you double the colors in the color bucket, and more awesome pro features!

[Learn more, Memberships starting at \\$2.50/m!](#)

**Follow me
on Twitter!**

@ConvertingColor