

Converting Colors

HunterLab(54.1180, 4.2638,
18.5422)

Have a look what the booklet for
HunterLab(54.1180, 4.2638,
18.5422) contains.

HunterLab(54.1484, 4.2371, 18.5097)	3
<i>Conversions</i>	4
<i>Details</i>	6
<i>Harmonies</i>	12
<i>Previews</i>	24
<i>Color Blindness Simulation</i>	28
<i>CSS Examples</i>	31

Color

**HunterLab(54.1484, 4.2371,
18.5097)**

Conversions

Conversions Part 1

Format	Color
Hex	B08D6A
RGB	176, 141, 106
RGB Percent	69%, 55%, 42%
CMY	0.3098, 0.4470, 0.5843
CMYK	0.00, 0.20, 0.40, 0.31
HSL	30°, 31%, 55%
HSV	30°, 40%, 69%
XYZ	30.0309, 29.3205, 17.7123
YIQ	147.4750, 32.0950, -3.4650

Conversions

Conversions Part 2

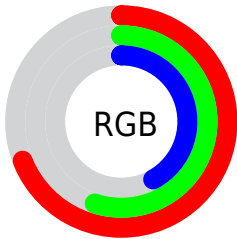
Format	Color
R _Y B	176, 176, 106
Decimal	11570538
CIE Lab	61.06, 8.38, 23.69
CIE LCh	61, 25.128, 70.527
Yxy	29.3219, 0.3897, 0.3805
Android (android.graphics.Color)	4289760618 (0xFFB08D6A)
YUV	147.4750, -20.4472, 25.0164
Hunter-Lab	54.1484, 4.2371, 18.5097

Details

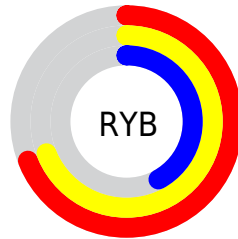
The HunterLab color $54.1484, 4.2371, 18.5097$ is a dark color, and the websafe version is hex $CC9966$. A complement of this color would be $50.2470, -5.1429, -17.5945$, and the grayscale version is $54.2787, -2.8962, 2.9491$.

A 20% lighter version of the original color is $76.6958, 3.7746, 22.3191$, and $34.5329, 4.3390, 14.4822$ is the 20% darker color. If you saturate the color by 10%, you get $51.4779, 6.8715, 21.1064$, and if you desaturate by 10%, it is $56.9433, 1.8899, 15.4039$.

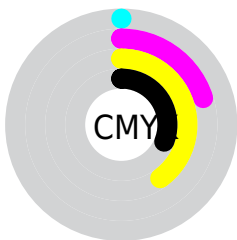
Distribution



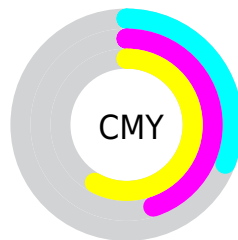
- Red (69%)
- Green (55%)
- Blue (42%)



- Red (69%)
- Yellow (69%)
- Blue (42%)



- Cyan (0%)
- Magenta (20%)
- Yellow (40%)
- Black (31%)



- Cyan (31%)
- Magenta (45%)
- Yellow (58%)

Brightness & Saturation Gradients

These gradients show how the HunterLab color 54.1484, 4.2371, 18.5097 changes by changing the brightness by 10 percent. The first figure shows a shift by +10% for each color and the second figure -10%.

Similar to the brightness gradients but the following saturation gradients show a change of the HunterLab color 54.1484, 4.2371, 18.5097 by changing the saturation by 10% instead.

■ 54.1484, 4.2371,
18.5097

■ 54.1484, 4.2371,
18.5097

172.8383, 1.1216,
34.7371

■ 43.9596, 4.3256,
16.5064

■ 76.5429, 3.8693,
22.3212

■ 34.5036, 4.3440,
14.4051

■ 88.6711, 3.6059,
24.1588

■ 25.8437, 4.2787,
12.1684

■ 101.3799, 3.2945,
25.9652

■ 18.0615, 4.1127,
9.7450

■ 114.6437, 2.9387,
27.7478

■ 11.2698, 3.8198,
7.8889

128.4403, 2.5412,
29.5121

■ 3.4331, 10.4490,
2.4032

142.7498, 2.1045,

0.0000, NaN, NaN

31.2628

0.0000, NaN, NaN

157.5545, 1.6307,
33.0035

0.0000, NaN, NaN

■ 54.1484, 4.2371,
18.5097

■ 54.1484, 4.2371,
18.5097

■ 51.4779, 6.8715,
21.1064

■ 56.9433, 1.8899,
15.4039

■ 48.9382, 9.8082,
23.1454

■ 59.8490, -0.1776,
11.8337

■ 46.5416, 13.0453,
24.5853

■ 62.8580, -1.9845,
7.8442

■ 44.2987, 16.5702,
25.3953

■ 65.9621, -3.5489,
3.4764

■ 42.2196, 20.3524,
25.5681

■ 69.1542, -4.8891,
-1.2326

■ 40.3052, 24.3012,
25.2443

■ 72.4276, -6.0233,
-6.2495

■ 40.2631, 24.3910,
25.2369

■ 75.7764, -6.9683,
-11.5452

■ 79.1954, -7.7401,
-17.0938

■ 82.3039, -10.4362,
-17.6209

Harmonies

Analogous

The Analogous color harmony consists of three colors that are next to each other on the color wheel.



54.1497, 13.8840, 14.3163



54.1484, 4.2371, 18.5097



54.1497, -6.6488, 19.0460

Triad

The Triadic color harmony groups three colors that are evenly spaced from another and form a triangle on the color wheel.



54.1497, 4.2350, 18.5104



54.1497, -21.9037, -0.8026



54.1497, 11.3326, -14.3987

Complementary

The Complementary color scheme is a pair of colors which are on the opposite of each other on the color wheel.



54.1484, 4.2371, 18.5097



50.2470, -5.1429, -17.5945

Split Complementary

Split-complementary colors differ from the complementary color scheme. The scheme consists of three colors, the original color and two neighbors of the complement color.



54.1497, 0.9697, -20.4023



54.1484, 4.2371, 18.5097



54.1497, -17.8459, -11.5889

Square

The Square scheme is like the rectangle color scheme, but the four colors are evenly spaced on the color wheel.



54.1497, 4.2350, 18.5104



54.1497, -21.1802, 9.1512



54.1497, -9.6688, -19.2834



54.1497, 18.1996, -4.0898

Rectangle

The Rectangle color scheme consists of four colors that form a rectangle on the color wheel.



54.1484, 4.2371, 18.5097



54.1497, -13.0806, 17.3997



54.1497, -9.6688, -19.2834



54.1497, 8.1101, -17.0709

Sweetspot

The Sweet Spot groups the original color and five complimentary colors.



54.1497, 4.2350, 18.5104



83.6523, -2.1103, 11.9229



46.3266, 26.2999, -3.2444



38.7034, -0.8436, 5.8716



94.3401, -5.0338, 5.1257



41.3092, -2.2042, 2.2444

Same Dimension

The Same Dimension uses a secret algorithm to generate beautiful new colors.



54.1497, 4.2350, 18.5104



69.6545, 8.9063, 28.1296



64.2817, -12.4396, 26.8151



30.3050, -0.9903, 3.6847



34.6577, 20.5009, 21.7148



7.0329, 1.7560, 4.3644

Inverse Universe

The Inverse Universe completely reimagines the original color for something new.



50.2470, -5.1429, -17.5945



63.2957, -6.1885, -30.8867



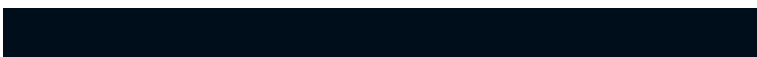
40.6291, 12.0869, -34.6926



29.8473, -2.1095, -0.5289



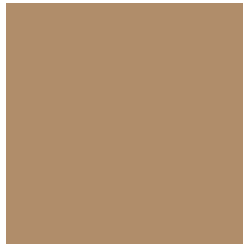
27.4532, 6.3668, -48.0582



5.9483, -0.7576, -5.7995

Previews

White Background



This preview shows how the HunterLab color 54.1484, 4.2371, 18.5097 looks on a white background.

Color Contrast Check

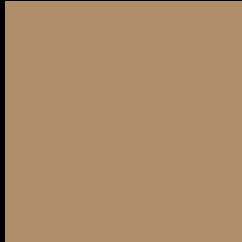
Large Text (above 18pt) WCAG AA ✓ Pass

Any Text WCAG AA × Fail

Large Text (above 18pt) WCAG AAA × Fail

Any Text WCAG AAA × Fail

Black Background



This preview shows how the HunterLab color 54.1484, 4.2371, 18.5097 looks on a black background.

Color Contrast Check

Large Text (above 18pt) WCAG AA ✓ Pass

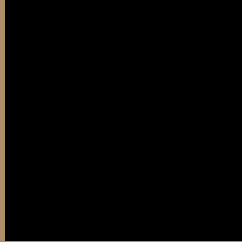
Any Text WCAG AA ✓ Pass

Large Text (above 18pt) WCAG AAA ✓ Pass

Any Text WCAG AAA × Fail

If you want to check with other color combinations, try the [Color Contrast Checker](#).

HunterLab 54.1484, 4.2371, 18.5097 Background



This preview shows how black text looks on a background with the HunterLab color 54.1484, 4.2371, 18.5097.



This preview shows how white text looks on a background with the HunterLab color 54.1484, 4.2371,

Color Blindness Simulation

Color vision deficiency is a very complex topic, and I could not describe the different causes any better than Wikipedia does, so if you want to learn more, you should check out their [article about color blindness](#).

Dichromacy



Original Color

54.1484, 4.2371, 18.5097

Protanopia

54.0746, -4.5314, 17.3778

Deuteranopia

54.0410, 3.8775, 18.4076



Tritanopia

54.2097, 13.1847, 3.8920

Trichromacy



Original Color

54.1484, 4.2371, 18.5097

Protanomaly

54.1598, -1.3462, 17.8182

Deuteranomaly

54.0410, 3.8775, 18.4076

Tritanomaly

54.2212, 9.7206, 10.1009

Monochromacy



Original Color

54.1484, 4.2371, 18.5097

Achromatopsia

54.0158, -2.8821, 2.9348

Achromatomaly

54.0239, -0.7360, 9.3187

CSS Examples

Text

The CSS property to change the color of the text to HunterLab 54.1484, 4.2371, 18.5097 is called "color". The color property can be set on classes, ids or directly on the HTML element.

This example shows how text in the color `rgb(176, 141, 106)` looks like.

```
.text, #text, p{  
    color:rgb(176, 141, 106)  
}
```

If you want to add a text shadow in that color use the text-shadow property, you can generate a text shadow directly with our [CSS Text Shadow Generator](#).

Here you see how black text with a 4 pixel rgb(176, 141, 106) colored shadow looks like.

```
.shadow{ text-shadow: 4px 4px 2px rgb(176, 141, 106) }
```

Border

The CSS property to change the border of an element to HunterLab 54.1484, 4.2371, 18.5097 is called "border". The border property can be set on classes, ids or directly on the HTML element.

This example shows the color as border, it can be applied via the CSS property "border" or "border-color".

```
.border, #border, table{ border:4px solid rgb(176, 141, 106) }
```


If only the border color should be changed use the property `border-color`.

```
.border{ border-color:rgb(176, 141, 106) }
```

If you want to add a box shadow in that color use:

Here you see how a box with a 4 pixel `rgb(176, 141, 106)` colored shadow looks like.

```
.boxshadow{ -moz-box-shadow:4px 4px 4px  
4px rgb(176, 141, 106); -webkit-box-  
shadow:4px 4px 4px 4px rgb(176, 141, 106);  
box-shadow:4px 4px 4px 4px rgb(176, 141,  
106) }
```

Background

The CSS property to change the background color of an element to HunterLab 54.1484, 4.2371, 18.5097 is called "background". The background property can be set on classes, ids or directly on the HTML element.

```
.background, #background, body{  
background: rgb(176, 141, 106) }
```

If only the background color should be changed can be used:

```
.background{ background-color: rgb(176,  
141, 106) }
```

This example shows the color as background, it is applied via the CSS property "background".

To optimize and compress your CSS code, you can use our [online CSS compressor and optimizer](#) based on csstidy. If you want to create a linear or radial gradient as background or border, check our [CSS Gradient Generator](#).

Hey! You found this booklet interesting? Support Converting Colors with the new Membership Option!

The pro membership hides all ads, plus gives you double the colors in the color bucket, and more awesome pro features!

[Learn more, Memberships starting at \\$2.50/m!](#)

**Follow me
on Twitter!**

@ConvertingColor