

Converting Colors

HunterLab(54.1203, 4.7806,
0.0454)

Have a look what the booklet for
HunterLab(54.1203, 4.7806, 0.0454)
contains.

HunterLab(54.0890, 5.0200, -0.0943)	3
<i>Conversions</i>	4
<i>Details</i>	6
<i>Harmonies</i>	12
<i>Previews</i>	24
<i>Color Blindness Simulation</i>	28
<i>CSS Examples</i>	31

Color

**HunterLab(54.0890, 5.0200,
-0.0943)**

Conversions

Conversions Part 1

Format	Color
Hex	A18E9A
RGB	161, 142, 154
RGB Percent	63%, 56%, 60%
CMY	0.3686, 0.4431, 0.3961
CMYK	0.00, 0.12, 0.04, 0.37
HSL	322°, 9%, 59%
HSV	322°, 12%, 63%
XYZ	30.2037, 29.2562, 34.6270
YIQ	149.0490, 7.4720, 7.7600

Conversions

Conversions Part 2

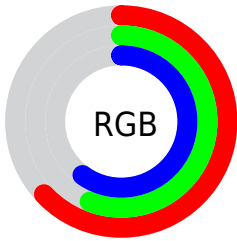
Format	Color
RYB	161, 142, 154
Decimal	10587802
CIELab	61.01, 9.27, -3.74
CIELCh	61, 10.000, 338.015
Yxy	29.2575, 0.3210, 0.3110
Android (android.graphics.Color)	4288777882 (0xFFA18E9A)
YUV	149.0490, 2.4408, 10.4810
Hunter-Lab	54.0890, 5.0200, -0.0943

Details

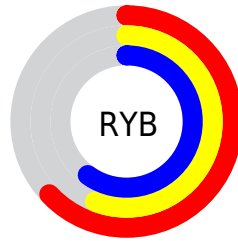
The HunterLab color $54.0890, 5.0200, -0.0943$ is a light color, and the websafe version is hex 999999 . A complement of this color would be $57.8025, -10.5921, 6.2650$, and the grayscale version is $54.8311, -2.9256, 2.9791$.

A 20% lighter version of the original color is $76.5721, 4.5709, 1.0572$, and $34.4743, 4.8167, -0.7416$ is the 20% darker color. If you saturate the color by 10%, you get $49.6131, 12.1085, -2.7323$, and if you desaturate by 10%, it is $58.8236, -1.9468, 2.7220$.

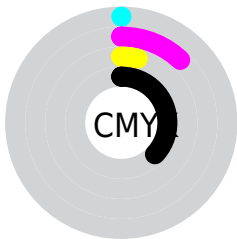
Distribution



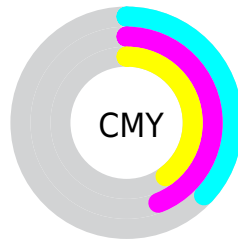
- Red (63%)
- Green (56%)
- Blue (60%)



- Red (63%)
- Yellow (56%)
- Blue (60%)



- Cyan (0%)
- Magenta (12%)
- Yellow (4%)
- Black (37%)



- Cyan (37%)
- Magenta (44%)
- Yellow (40%)

Brightness & Saturation Gradients

These gradients show how the HunterLab color 54.0890, 5.0200, -0.0943 changes by changing the brightness by 10 percent. The first figure shows a shift by +10% for each color and the second figure -10%.

Similar to the brightness gradients but the following saturation gradients show a change of the HunterLab color 54.0890, 5.0200, -0.0943 by changing the saturation by 10% instead.

■ 54.0890, 5.0200,
-0.0943

■ 54.0890, 5.0200,
-0.0943

172.7507, 2.2455,
4.9969

■ 43.9041, 5.0618,
-0.4555

■ 76.4761, 4.7400,
0.7731

■ 34.4524, 5.0298,
-0.7639

■ 88.6010, 4.5170,
1.2700

■ 25.7972, 4.9101,
-1.0116

■ 101.3065, 4.2444,
1.8057

■ 18.0202, 4.6849,
-1.1891

114.5673, 3.9258,
2.3779

■ 11.2346, 4.3269,
-1.2820

128.3609, 3.5642,
2.9847

■ 3.3409, 11.9158,
-4.4628

142.6676, 3.1622,

0.0000, NaN, NaN

3.6244

0.0000, NaN, NaN

157.4695, 2.7220,
4.2956

0.0000, NaN, NaN

■ 54.0890, 5.0200,
-0.0943

■ 54.0890, 5.0200,
-0.0943

■ 49.6131, 12.1085,
-2.7323

■ 58.8236, -1.9468,
2.7220

■ 45.4355, 19.2763,
-5.1300

■ 63.7781, -8.7730,
5.6684

■ 41.6093, 26.4220,
-7.1963

■ 68.9252, -15.4628,
8.7142

■ 38.1953, 33.3641,
-8.8114

■ 74.2417, -22.0276,
11.8378

■ 35.2597, 39.8147,
-9.8299

■ 79.7086, -28.4826,
15.0240

■ 32.8672, 45.3780,
-10.1002

■ 85.3106, -34.8435,
18.2621

■ 31.0665, 49.6089,
-9.5088

■ 91.0346, -41.1253,
21.5448

■ 29.8700, 52.1532,
-8.0411

■ 91.2885, -40.3716,
19.4708

■ 29.2063, 53.2792,
-6.4184

■ 91.4447, -39.4558,
17.2193

Harmonies

Analogous

The Analogous color harmony consists of three colors that are next to each other on the color wheel.



54.0902, 2.3143, -3.6477



54.0890, 5.0200, -0.0943



54.0902, 5.5712, 4.0329

Triad

The Triadic color harmony groups three colors that are evenly spaced from another and form a triangle on the color wheel.



54.0902, 5.0185, -0.0933



54.0902, -4.0406, 10.1887



54.0902, -9.2694, -2.1436

Complementary

The Complementary color scheme is a pair of colors which are on the opposite of each other on the color wheel.



54.0890, 5.0200, -0.0943



57.8025, -10.5921, 6.2650

Split Complementary

Split-complementary colors differ from the complementary color scheme. The scheme consists of three colors, the original color and two neighbors of the complement color.



54.0902, -10.8592, 1.8326



54.0890, 5.0200, -0.0943



54.0902, -7.9028, 8.7986

Square

The Square scheme is like the rectangle color scheme, but the four colors are evenly spaced on the color wheel.



54.0902, 5.0185, -0.0933



54.0902, 0.2510, 9.7612



54.0902, -10.3669, 5.8153



54.0902, -5.9590, -4.8945

Rectangle

The Rectangle color scheme consists of four colors that form a rectangle on the color wheel.



54.0890, 5.0200, -0.0943



54.0902, 4.6294, 6.5206



54.0902, -10.3669, 5.8153



54.0902, -10.0179, -0.8942

Sweetspot

The Sweet Spot groups the original color and five complimentary colors.



54.0902, 5.0185, -0.0933



77.2511, -0.5001, 2.7681



53.2044, 2.4944, -4.7474



35.9621, 0.0776, 1.1681



89.8524, -4.7943, 4.8819



37.4146, -1.9963, 2.0328

Same Dimension

The Same Dimension uses a secret algorithm to generate beautiful new colors.



54.0902, 5.0185, -0.0933



70.8759, 9.0395, -1.0197



53.8093, 3.5170, 3.9080



26.7538, 1.5728, 0.2916



26.1164, 47.6699, -5.9512



3.8982, 7.3119, -2.4124

Inverse Universe

The Inverse Universe completely reimagines the original color for something new.



54.0902, 5.0185, -0.0933



70.8759, 9.0395, -1.0197



58.0741, -9.0726, 2.3851



26.7538, 1.5728, 0.2916



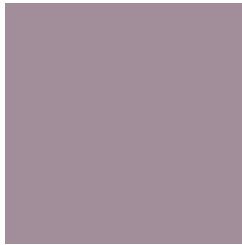
26.1164, 47.6699, -5.9512



3.8982, 7.3119, -2.4124

Previews

White Background



This preview shows how the HunterLab color 54.0890, 5.0200, -0.0943 looks on a white background.

Color Contrast Check

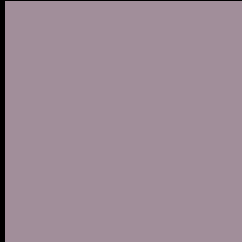
Large Text (above 18pt) WCAG AA ✓ Pass

Any Text WCAG AA × Fail

Large Text (above 18pt) WCAG AAA × Fail

Any Text WCAG AAA × Fail

Black Background



This preview shows how the HunterLab color 54.0890, 5.0200, -0.0943 looks on a black background.

Color Contrast Check

Large Text (above 18pt) WCAG AA ✓ Pass

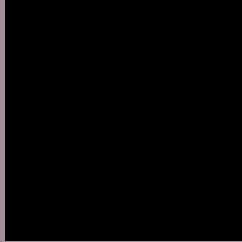
Any Text WCAG AA ✓ Pass

Large Text (above 18pt) WCAG AAA ✓ Pass

Any Text WCAG AAA × Fail

If you want to check with other color combinations, try the [Color Contrast Checker](#).

HunterLab 54.0890, 5.0200, -0.0943 Background



This preview shows how black text looks on a background with the HunterLab color 54.0890, 5.0200, -0.0943.



This preview shows how white text looks on a background with the HunterLab color 54.0890, 5.0200, -0.0943.

-0.0943.

Color Blindness Simulation

Color vision deficiency is a very complex topic, and I could not describe the different causes any better than Wikipedia does, so if you want to learn more, you should check out their [article about color blindness](#).

Dichromacy



Original Color

54.0890, 5.0200, -0.0943

Protanopia

54.0325, -0.7445, -1.7205

Deuteranopia

54.1747, 3.8873, -0.0083



Tritanopia

54.0583, 4.8564, 0.3419

Trichromacy



Original Color

54.0890, 5.0200, -0.0943

Protanomaly

54.1539, 1.0666, -1.0474

Deuteranomaly

54.2693, 4.2045, 0.1139

Tritanomaly

54.0583, 4.8564, 0.3419

Monochromacy



Original Color

54.0890, 5.0200, -0.0943

Achromatopsia

54.8219, -2.9252, 2.9786

Achromatomaly

54.3732, 0.0556, 1.5798

CSS Examples

Text

The CSS property to change the color of the text to HunterLab 54.0890, 5.0200, -0.0943 is called "color". The color property can be set on classes, ids or directly on the HTML element.

This example shows how text in the color `rgb(161, 142, 154)` looks like.

```
.text, #text, p{  
    color:rgb(161, 142, 154)  
}
```

If you want to add a text shadow in that color use the text-shadow property, you can generate a text shadow directly with our [CSS Text Shadow Generator](#).

Here you see how black text with a 4 pixel rgb(161, 142, 154) colored shadow looks like.

```
.shadow{ text-shadow: 4px 4px 2px rgb(161, 142, 154) }
```

Border

The CSS property to change the border of an element to HunterLab 54.0890, 5.0200, -0.0943 is called "border". The border property can be set on classes, ids or directly on the HTML element.

This example shows the color as border, it can be applied via the CSS property "border" or "border-color".

```
.border, #border, table{ border:4px solid rgb(161, 142, 154) }
```


If only the border color should be changed use the property `border-color`.

```
.border{ border-color:rgb(161, 142, 154) }
```

If you want to add a box shadow in that color use:

Here you see how a box with a 4 pixel `rgb(161, 142, 154)` colored shadow looks like.

```
.boxshadow{ -moz-box-shadow:4px 4px 4px  
4px rgb(161, 142, 154); -webkit-box-  
shadow:4px 4px 4px 4px rgb(161, 142, 154);  
box-shadow:4px 4px 4px 4px rgb(161, 142,  
154) }
```

Background

The CSS property to change the background color of an element to HunterLab 54.0890, 5.0200, -0.0943 is called "background". The background property can be set on classes, ids or directly on the HTML element.

```
.background, #background, body{  
background: rgb(161, 142, 154) }
```

If only the background color should be changed can be used:

```
.background{ background-color: rgb(161,  
142, 154) }
```

This example shows the color as background, it is applied via the CSS property "background".

To optimize and compress your CSS code, you can use our [online CSS compressor and optimizer](#) based on csstidy. If you want to create a linear or radial gradient as background or border, check our [CSS Gradient Generator](#).

Hey! You found this booklet interesting? Support Converting Colors with the new Membership Option!

The pro membership hides all ads, plus gives you double the colors in the color bucket, and more awesome pro features!

[Learn more, Memberships starting at \\$2.50/m!](#)

**Follow me
on Twitter!**

@ConvertingColor