

Converting Colors

HunterLab(54.1838, 2.9834,
11.7303)

Have a look what the booklet for
HunterLab(54.1838, 2.9834,
11.7303) contains.

HunterLab(54.2919, 2.7573, 11.9469)	3
<i>Conversions</i>	4
<i>Details</i>	6
<i>Harmonies</i>	12
<i>Previews</i>	24
<i>Color Blindness Simulation</i>	28
<i>CSS Examples</i>	31

Color

**HunterLab(54.2919, 2.7573,
11.9469)**

Conversions

Conversions Part 1

Format	Color
Hex	A88F7E
RGB	168, 143, 126
RGB Percent	66%, 56%, 49%
CMY	0.3412, 0.4392, 0.5059
CMYK	0.00, 0.15, 0.25, 0.34
HSL	24°, 19%, 58%
HSV	24°, 25%, 66%
XYZ	29.7368, 29.4761, 23.8608
YIQ	148.5370, 20.3570, 0.0130

Conversions

Conversions Part 2

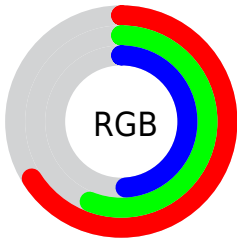
Format	Color
R_{YB}	168, 155, 126
Decimal	11046782
CIE _{Lab}	61.20, 6.68, 12.52
CIE _{LCh}	61, 14.192, 61.944
Yxy	29.4774, 0.3580, 0.3548
Android (android.graphics.Color)	4289236862 (0xFFA88F7E)
YUV	148.5370, -11.1107, 17.0691
Hunter-Lab	54.2919, 2.7573, 11.9469

Details

The HunterLab color $54.2919, 2.7573, 11.9469$ is a dark color, and the websafe version is hex 999999 . A complement of this color would be $54.2173, -6.8492, -7.2235$, and the grayscale version is $54.6737, -2.9173, 2.9705$.

A 20% lighter version of the original color is $76.8339, 2.2453, 14.4742$, and $34.6545, 2.8343, 9.3911$ is the 20% darker color. If you saturate the color by 10%, you get $51.1956, 5.6203, 14.8236$, and if you desaturate by 10%, it is $57.5199, 0.1440, 8.7411$.

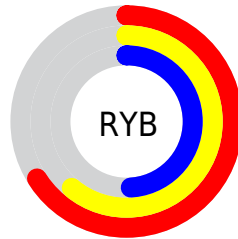
Distribution



Red (66%)

Green (56%)

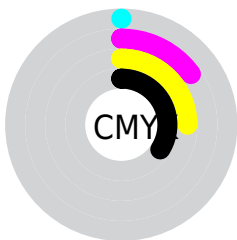
Blue (49%)



Red (66%)

Yellow (61%)

Blue (49%)

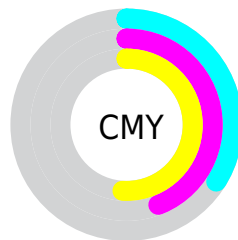


Cyan (0%)

Magenta (15%)

Yellow (25%)

Black (34%)



Cyan (34%)

Magenta (44%)

Yellow (51%)

Brightness & Saturation Gradients

These gradients show how the HunterLab color 54.2919, 2.7573, 11.9469 changes by changing the brightness by 10 percent. The first figure shows a shift by +10% for each color and the second figure -10%.

Similar to the brightness gradients but the following saturation gradients show a change of the HunterLab color 54.2919, 2.7573, 11.9469 by changing the saturation by 10% instead.

■ 54.2919, 2.7573,
11.9469

■ 54.2919, 2.7573,
11.9469

173.0494, -1.0090,
23.3570

■ 44.0934, 2.9369,
10.6694

■ 76.7038, 2.2229,
14.4682

■ 34.6270, 3.0525,
9.3657

■ 88.8402, 1.8820,
15.7228

■ 25.9559, 3.0919,
8.0197

■ 101.5567, 1.4965,
16.9789

■ 18.1610, 3.0405,
6.6029

114.8279, 1.0695,
18.2392

■ 11.3549, 2.8749,
5.4708

128.6316, 0.6033,
19.5058

■ 3.6459, 7.7833,
2.5521

142.9479, 0.1004,

0.0000, NaN, NaN

20.7802

0.0000, NaN, NaN

157.7592, -0.4376,
22.0636

0.0000, NaN, NaN

■ 54.2919, 2.7573,
11.9469

■ 54.2919, 2.7573,
11.9469

■ 51.1956, 5.6203,
14.8236

■ 57.5199, 0.1440,
8.7411

■ 48.2413, 8.7536,
17.3219

■ 60.8637, -2.2326,
5.2450

■ 45.4459, 12.1640,
19.3907

■ 64.3137, -4.3940,
1.4949

■ 42.8264, 15.8492,
20.9760

■ 67.8606, -6.3597,
-2.4790

■ 40.4014, 19.7895,
22.0268

■ 71.4960, -8.1481,
-6.6511

■ 38.1895, 23.9405,
22.5057

■ 75.2130, -9.7767,
-10.9998

■ 36.2080, 28.2227,
22.4103

■ 79.0051, -11.2610,
-15.5068

■ 35.2999, 30.3401,
22.2828

■ 82.6538, -13.8057,
-17.1757

■ 85.9174, -18.7720,
-12.6737

Harmonies

Analogous

The Analogous color harmony consists of three colors that are next to each other on the color wheel.



54.2931, 7.4677, 8.5589



54.2919, 2.7573, 11.9469



54.2931, -3.2991, 13.0089

Triad

The Triadic color harmony groups three colors that are evenly spaced from another and form a triangle on the color wheel.



54.2931, 2.7555, 11.9477



54.2931, -14.1841, 2.5736



54.2931, 3.4778, -7.4453

Complementary

The Complementary color scheme is a pair of colors which are on the opposite of each other on the color wheel.



54.2919, 2.7573, 11.9469



54.2173, -6.8492, -7.2235

Split Complementary

Split-complementary colors differ from the complementary color scheme. The scheme consists of three colors, the original color and two neighbors of the complement color.



54.2931, -2.4995, -9.4864



54.2919, 2.7573, 11.9469



54.2931, -12.5435, -3.3176

Square

The Square scheme is like the rectangle color scheme, but the four colors are evenly spaced on the color wheel.



54.2931, 2.7555, 11.9477



54.2931, -12.9143, 7.9686



54.2931, -8.3328, -7.8991



54.2931, 7.8975, -2.5868

Rectangle

The Rectangle color scheme consists of four colors that form a rectangle on the color wheel.



54.2919, 2.7573, 11.9469



54.2931, -7.2344, 12.3601



54.2931, -8.3328, -7.8991



54.2931, 1.5751, -8.5065

Sweetspot

The Sweet Spot groups the original color and five complimentary colors.



54.2931, 2.7555, 11.9477



81.0172, -2.3511, 8.0983



50.4854, 14.9338, -3.1143



37.7055, -1.0165, 3.9056



92.0917, -4.9138, 5.0035



39.3538, -2.0998, 2.1382

Same Dimension

The Same Dimension uses a secret algorithm to generate beautiful new colors.



54.2931, 2.7555, 11.9477



70.7986, 5.8106, 18.3041



60.2584, -7.2414, 17.5824



28.3237, -0.5917, 3.2306



30.8308, 25.9670, 19.4524



5.7640, 1.8772, 3.5846

Inverse Universe

The Inverse Universe completely reimagines the original color for something new.



54.2173, -6.8492, -7.2235



70.6714, -9.8758, -13.0243



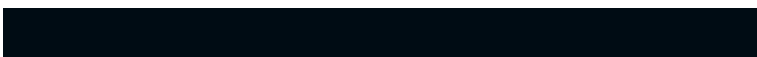
48.2511, 3.1685, -15.7337



28.3106, -2.3250, -0.2262



30.1964, -0.6528, -36.3338



5.6420, -1.5513, -3.7033

Previews

White Background



This preview shows how the HunterLab color 54.2919, 2.7573, 11.9469 looks on a white background.

Color Contrast Check

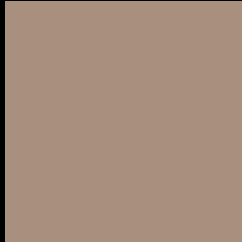
Large Text (above 18pt) WCAG AA ✓ Pass

Any Text WCAG AA × Fail

Large Text (above 18pt) WCAG AAA × Fail

Any Text WCAG AAA × Fail

Black Background



This preview shows how the HunterLab color 54.2919, 2.7573, 11.9469 looks on a black background.

Color Contrast Check

Large Text (above 18pt) WCAG AA ✓ Pass

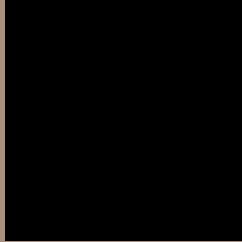
Any Text WCAG AA ✓ Pass

Large Text (above 18pt) WCAG AAA ✓ Pass

Any Text WCAG AAA × Fail

If you want to check with other color combinations, try the [Color Contrast Checker](#).

HunterLab 54.2919, 2.7573, 11.9469 Background



This preview shows how black text looks on a background with the HunterLab color 54.2919, 2.7573, 11.9469.



This preview shows how white text looks on a background with the HunterLab color 54.2919, 2.7573,

Color Blindness Simulation

Color vision deficiency is a very complex topic, and I could not describe the different causes any better than Wikipedia does, so if you want to learn more, you should check out their [article about color blindness](#).

Dichromacy



Original Color

54.2919, 2.7573, 11.9469

Protanopia

54.2167, -3.1955, 11.0191

Deuteranopia

54.2203, 3.9324, 11.8949



Tritanopia

54.1527, 9.1703, 1.9377

Trichromacy



Original Color

54.2919, 2.7573, 11.9469

Protanomaly

54.3725, -1.2381, 11.5878

Deuteranomaly

54.1178, 3.5885, 11.7848

Tritanomaly

54.0604, 6.9706, 5.7968

Monochromacy



Original Color

54.2919, 2.7573, 11.9469

Achromatopsia

54.8219, -2.9252, 2.9786

Achromatomaly

54.6429, -1.0494, 6.3099

CSS Examples

Text

The CSS property to change the color of the text to HunterLab 54.2919, 2.7573, 11.9469 is called "color". The color property can be set on classes, ids or directly on the HTML element.

This example shows how text in the color `rgb(168, 143, 126)` looks like.

```
.text, #text, p{  
    color:rgb(168, 143, 126)  
}
```

If you want to add a text shadow in that color use the text-shadow property, you can generate a text shadow directly with our [CSS Text Shadow Generator](#).

Here you see how black text with a 4 pixel rgb(168, 143, 126) colored shadow looks like.

```
.shadow{ text-shadow: 4px 4px 2px rgb(168, 143, 126) }
```

Border

The CSS property to change the border of an element to HunterLab 54.2919, 2.7573, 11.9469 is called "border". The border property can be set on classes, ids or directly on the HTML element.

This example shows the color as border, it can be applied via the CSS property "border" or "border-color".

```
.border, #border, table{ border:4px solid rgb(168, 143, 126) }
```


If only the border color should be changed use the property `border-color`.

```
.border{ border-color:rgb(168, 143, 126) }
```

If you want to add a box shadow in that color use:

Here you see how a box with a 4 pixel `rgb(168, 143, 126)` colored shadow looks like.

```
.boxshadow{ -moz-box-shadow:4px 4px 4px  
4px rgb(168, 143, 126); -webkit-box-  
shadow:4px 4px 4px 4px rgb(168, 143, 126);  
box-shadow:4px 4px 4px 4px rgb(168, 143,  
126) }
```

Background

The CSS property to change the background color of an element to HunterLab 54.2919, 2.7573, 11.9469 is called "background". The background property can be set on classes, ids or directly on the HTML element.

```
.background, #background, body{  
background: rgb(168, 143, 126) }
```

If only the background color should be changed can be used:

```
.background{ background-color: rgb(168,  
143, 126) }
```

This example shows the color as background, it is applied via the CSS property "background".

To optimize and compress your CSS code, you can use our [online CSS compressor and optimizer](#) based on csstidy. If you want to create a linear or radial gradient as background or border, check our [CSS Gradient Generator](#).

Hey! You found this booklet interesting? Support Converting Colors with the new Membership Option!

The pro membership hides all ads, plus gives you double the colors in the color bucket, and more awesome pro features!

[Learn more, Memberships starting at \\$2.50/m!](#)

**Follow me
on Twitter!**

@ConvertingColor