

Converting Colors

HunterLab(54.1904, 3.9772,
10.7382)

Have a look what the booklet for
HunterLab(54.1904, 3.9772,
10.7382) contains.

HunterLab(54.1904, 3.9772, 10.7382)	3
<i>Conversions</i>	4
<i>Details</i>	6
<i>Harmonies</i>	12
<i>Previews</i>	24
<i>Color Blindness Simulation</i>	28
<i>CSS Examples</i>	31

Color

**HunterLab(54.1904, 3.9772,
10.7382)**

Conversions

Conversions Part 1

Format	Color
Hex	A98E81
RGB	169, 142, 129
RGB Percent	66%, 56%, 51%
CMY	0.3373, 0.4431, 0.4941
CMYK	0.00, 0.16, 0.24, 0.34
HSL	20°, 19%, 58%
HSV	20°, 24%, 66%
XYZ	29.9976, 29.3660, 24.8560
YIQ	148.5910, 20.2650, 1.6810

Conversions

Conversions Part 2

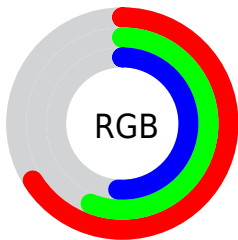
Format	Color
R_{YB}	169, 148, 129
Decimal	11112065
CIE _{Lab}	61.10, 8.08, 10.71
CIE _{LCh}	61, 13.412, 52.957
Yxy	29.3673, 0.3562, 0.3487
Android (android.graphics.Color)	4289302145 (0xFFA98E81)
YUV	148.5910, -9.6584, 17.8987
Hunter-Lab	54.1904, 3.9772, 10.7382

Details

The HunterLab color $54.1904, 3.9772, 10.7382$ is a dark color, and the websafe version is hex $CC9999$. A complement of this color would be $55.9533, -8.2657, -5.4412$, and the grayscale version is $54.6898, -2.9181, 2.9714$.

A 20% lighter version of the original color is $76.7234, 3.5460, 13.1387$, and $34.5637, 3.9525, 8.3484$ is the 20% darker color. If you saturate the color by 10%, you get $50.7268, 7.4862, 13.4372$, and if you desaturate by 10%, it is $57.8138, 0.7176, 7.7900$.

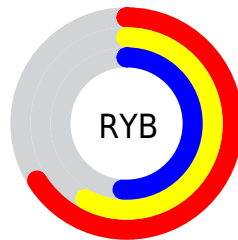
Distribution



Red (66%)

Green (56%)

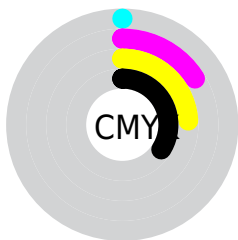
Blue (51%)



Red (66%)

Yellow (58%)

Blue (51%)

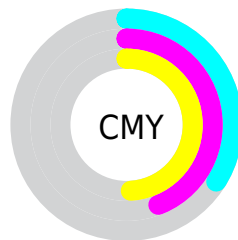


Cyan (0%)

Magenta (16%)

Yellow (24%)

Black (34%)



Cyan (34%)

Magenta (44%)

Yellow (49%)

Brightness & Saturation Gradients

These gradients show how the HunterLab color 54.1904, 3.9772, 10.7382 changes by changing the brightness by 10 percent. The first figure shows a shift by +10% for each color and the second figure -10%.

Similar to the brightness gradients but the following saturation gradients show a change of the HunterLab color 54.1904, 3.9772, 10.7382 by changing the saturation by 10% instead.

■ 54.1904, 3.9772,
10.7382

■ 54.1904, 3.9772,
10.7382

172.9000, 0.7479,
21.3968

■ 43.9987, 4.0819,
9.5724

■ 76.5899, 3.5805,
13.0600

■ 34.5397, 4.1173,
8.3912

■ 88.7206, 3.3035,
14.2239

■ 25.8765, 4.0703,
7.1819

■ 101.4316, 2.9791,
15.3943

■ 18.0906, 3.9243,
5.9212

114.6976, 2.6108,
16.5730

■ 11.2947, 3.6537,
4.8086

128.4962, 2.2013,
17.7617

■ 3.4967, 9.8818,
2.4477

142.8077, 1.7530,

0.0000, NaN, NaN

18.9613

0.0000, NaN, NaN

157.6144, 1.2679,
20.1728

0.0000, NaN, NaN

■ 54.1904, 3.9772,
10.7382

■ 54.1904, 3.9772,
10.7382

■ 50.7268, 7.4862,
13.4372

■ 57.8138, 0.7176,
7.7900

■ 47.4388, 11.2640,
15.8377

■ 61.5762, -2.3062,
4.6287

■ 44.3503, 15.3119,
17.8850

■ 65.4646, -5.1174,
1.2865

■ 41.4868, 19.6151,
19.5168

■ 69.4665, -7.7373,
-2.2113

■ 38.8762, 24.1308,
20.6679

■ 73.5713, -10.1864,
-5.8443

■ 36.5473, 28.7769,
21.2822

■ 77.7701, -12.4832,
-9.5961

■ 34.5274, 33.4213,
21.3325

■ 82.0550, -14.6449,
-13.4533

■ 33.4092, 36.2390,
21.2210

■ 86.0674, -18.6673,
-12.4657

■ 89.8630, -24.2507,
-7.4719

Harmonies

Analogous

The Analogous color harmony consists of three colors that are next to each other on the color wheel.



54.1916, 7.7405, 6.9193



54.1904, 3.9772, 10.7382



54.1916, -1.5228, 12.4413

Triad

The Triadic color harmony groups three colors that are evenly spaced from another and form a triangle on the color wheel.



54.1916, 3.9754, 10.7390



54.1916, -13.5048, 4.2322



54.1916, 1.5157, -7.7339

Complementary

The Complementary color scheme is a pair of colors which are on the opposite of each other on the color wheel.



54.1904, 3.9772, 10.7382



55.9533, -8.2657, -5.4412

Split Complementary

Split-complementary colors differ from the complementary color scheme. The scheme consists of three colors, the original color and two neighbors of the complement color.



54.1916, -4.2526, -8.6461



54.1904, 3.9772, 10.7382



54.1916, -12.7676, -1.3447

Square

The Square scheme is like the rectangle color scheme, but the four colors are evenly spaced on the color wheel.



54.1916, 3.9754, 10.7390



54.1916, -11.4958, 8.9487



54.1916, -9.4382, -6.2006



54.1916, 6.2793, -3.8245

Rectangle

The Rectangle color scheme consists of four colors that form a rectangle on the color wheel.



54.1904, 3.9772, 10.7382



54.1916, -5.3676, 12.2874



54.1916, -9.4382, -6.2006



54.1916, -0.3761, -8.4169

Sweetspot

The Sweet Spot groups the original color and five complimentary colors.



54.1916, 3.9754, 10.7390



80.6443, -1.7210, 7.6863



51.5242, 14.6017, -4.3592



37.5181, -0.6994, 3.6991



92.0917, -4.9138, 5.0035



39.3538, -2.0998, 2.1382

Same Dimension

The Same Dimension uses a secret algorithm to generate beautiful new colors.



54.1916, 3.9754, 10.7390



70.2537, 7.5470, 16.1621



59.7859, -5.5420, 16.1458



28.1527, -0.3012, 3.0440



28.9949, 30.8593, 18.4068



5.4490, 2.5415, 3.4022

Inverse Universe

The Inverse Universe completely reimagines the original color for something new.



55.9533, -8.2657, -5.4412



73.0695, -12.0617, -9.7338



50.2339, 1.1604, -13.3291



28.4864, -2.6113, -0.0140



33.4884, -5.9568, -28.9985



5.9985, -2.0523, -3.0673

Previews

White Background



This preview shows how the HunterLab color 54.1904, 3.9772, 10.7382 looks on a white background.

Color Contrast Check

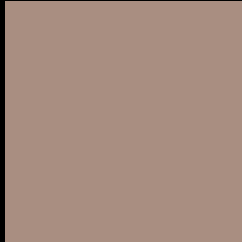
Large Text (above 18pt) WCAG AA ✓ Pass

Any Text WCAG AA × Fail

Large Text (above 18pt) WCAG AAA × Fail

Any Text WCAG AAA × Fail

Black Background



This preview shows how the HunterLab color 54.1904, 3.9772, 10.7382 looks on a black background.

Color Contrast Check

Large Text (above 18pt) WCAG AA ✓ Pass

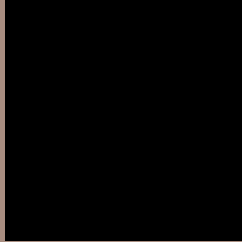
Any Text WCAG AA ✓ Pass

Large Text (above 18pt) WCAG AAA ✓ Pass

Any Text WCAG AAA × Fail

If you want to check with other color combinations, try the [Color Contrast Checker](#).

HunterLab 54.1904, 3.9772, 10.7382 Background



This preview shows how black text looks on a background with the HunterLab color 54.1904, 3.9772, 10.7382.



This preview shows how white text looks on a background with the HunterLab color 54.1904, 3.9772,

Color Blindness Simulation

Color vision deficiency is a very complex topic, and I could not describe the different causes any better than Wikipedia does, so if you want to learn more, you should check out their [article about color blindness](#).

Dichromacy



Original Color

54.1904, 3.9772, 10.7382

Protanopia

54.2249, -2.9688, 9.4923

Deuteranopia

54.1904, 3.9772, 10.7382



Tritanopia

54.1527, 9.1703, 1.9377

Trichromacy



Original Color

54.1904, 3.9772, 10.7382

Protanomaly

54.0929, -0.5494, 9.7864

Deuteranomaly

54.1904, 3.9772, 10.7382

Tritanomaly

54.0881, 7.1170, 5.4010

Monochromacy



Original Color

54.1904, 3.9772, 10.7382

Achromatopsia

54.8219, -2.9252, 2.9786

Achromatomaly

54.3863, -0.4169, 5.6067

CSS Examples

Text

The CSS property to change the color of the text to HunterLab 54.1904, 3.9772, 10.7382 is called "color". The color property can be set on classes, ids or directly on the HTML element.

This example shows how text in the color `rgb(169, 142, 129)` looks like.

```
.text, #text, p{  
    color:rgb(169, 142, 129)  
}
```

If you want to add a text shadow in that color use the text-shadow property, you can generate a text shadow directly with our [CSS Text Shadow Generator](#).

Here you see how black text with a 4 pixel rgb(169, 142, 129) colored shadow looks like.

```
.shadow{ text-shadow: 4px 4px 2px rgb(169, 142, 129) }
```

Border

The CSS property to change the border of an element to HunterLab 54.1904, 3.9772, 10.7382 is called "border". The border property can be set on classes, ids or directly on the HTML element.

This example shows the color as border, it can be applied via the CSS property "border" or "border-color".

```
.border, #border, table{ border:4px solid rgb(169, 142, 129) }
```


If only the border color should be changed use the property `border-color`.

```
.border{ border-color:rgb(169, 142, 129) }
```

If you want to add a box shadow in that color use:

Here you see how a box with a 4 pixel `rgb(169, 142, 129)` colored shadow looks like.

```
.boxshadow{ -moz-box-shadow:4px 4px 4px  
4px rgb(169, 142, 129); -webkit-box-  
shadow:4px 4px 4px 4px rgb(169, 142, 129);  
box-shadow:4px 4px 4px 4px rgb(169, 142,  
129) }
```

Background

The CSS property to change the background color of an element to HunterLab 54.1904, 3.9772, 10.7382 is called "background". The background property can be set on classes, ids or directly on the HTML element.

```
.background, #background, body{  
background: rgb(169, 142, 129) }
```

If only the background color should be changed can be used:

```
.background{ background-color: rgb(169,  
142, 129) }
```

This example shows the color as background, it is applied via the CSS property "background".

To optimize and compress your CSS code, you can use our [online CSS compressor and optimizer](#) based on csstidy. If you want to create a linear or radial gradient as background or border, check our [CSS Gradient Generator](#).

Hey! You found this booklet interesting? Support Converting Colors with the new Membership Option!

The pro membership hides all ads, plus gives you double the colors in the color bucket, and more awesome pro features!

[Learn more, Memberships starting at \\$2.50/m!](#)

**Follow me
on Twitter!**

@ConvertingColor