

Converting Colors

HunterLab(54.2203, 13.7424,
10.4390)

Have a look what the booklet for
HunterLab(54.2203, 13.7424,
10.4390) contains.

HunterLab(54.2022, 13.6347, 10.5363)	3
<i>Conversions</i>	4
<i>Details</i>	6
<i>Harmonies</i>	12
<i>Previews</i>	24
<i>Color Blindness Simulation</i>	28
<i>CSS Examples</i>	31

Color

**HunterLab(54.2022, 13.6347,
10.5363)**

Conversions

Conversions Part 1

Format	Color
Hex	BA8782
RGB	186, 135, 130
RGB Percent	73%, 53%, 51%
CMY	0.2706, 0.4706, 0.4902
CMYK	0.00, 0.27, 0.30, 0.27
HSL	5°, 29%, 62%
HSV	5°, 30%, 73%
XYZ	32.9430, 29.3788, 25.0535
YIQ	149.6790, 32.0010, 9.2570

Conversions

Conversions Part 2

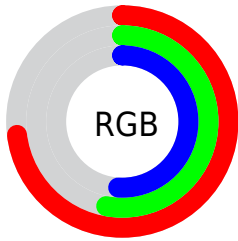
Format	Color
RYB	186, 135, 130
Decimal	12224386
CIELab	61.12, 18.83, 10.40
CIELCh	61, 21.509, 28.920
Yxy	29.3802, 0.3770, 0.3362
Android (android.graphics.Color)	4290414466 (0xFFBA8782)
YUV	149.6790, -9.7017, 31.8535
Hunter-Lab	54.2022, 13.6347, 10.5363

Details

The HunterLab color **54.2022, 13.6347, 10.5363** is a light color, and the websafe version is hex **CC9999**. A complement of this color would be **64.2942, -16.4764, -3.5095**, and the grayscale version is **55.1259, -2.9414, 2.9951**.

A 20% lighter version of the original color is **76.7260, 13.9413, 12.9033**, and **34.5201, 12.4673, 8.1190** is the 20% darker color. If you saturate the color by 10%, you get **49.5664, 19.9540, 12.7639**, and if you desaturate by 10%, it is **59.1898, 7.5827, 8.2902**.

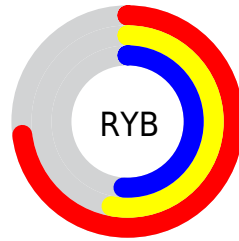
Distribution



Red (73%)

Green (53%)

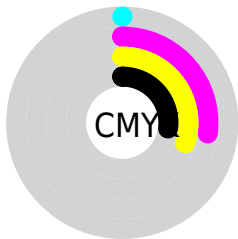
Blue (51%)



Red (73%)

Yellow (53%)

Blue (51%)

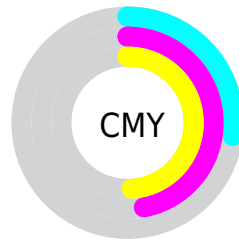


Cyan (0%)

Magenta (27%)

Yellow (30%)

Black (27%)



Cyan (27%)

Magenta (47%)

Yellow (49%)

Brightness & Saturation Gradients

These gradients show how the HunterLab color 54.2022, 13.6347, 10.5363 changes by changing the brightness by 10 percent. The first figure shows a shift by +10% for each color and the second figure -10%.

Similar to the brightness gradients but the following saturation gradients show a change of the HunterLab color 54.2022, 13.6347, 10.5363 by changing the saturation by 10% instead.

■ 54.2022, 13.6347,
10.5363

■ 54.2022, 13.6347,
10.5363

172.9175, 14.3735,
21.0708

■ 44.0098, 13.1962,
9.3890

■ 76.6032, 14.2444,
12.8252

■ 34.5499, 12.6570,
8.2281

■ 88.7345, 14.4378,
13.9741

■ 25.8858, 11.9986,
7.0414

■ 101.4462, 14.5653,
15.1303

■ 18.0988, 11.1996,
5.8067

114.7128, 14.6321,
16.2956

■ 11.3017, 10.2348,
4.6970

128.5120, 14.6428,
17.4713

■ 3.5145, 23.1550,
2.4601

142.8241, 14.6012,

0.0000, NaN, NaN

18.6586

0.0000, NaN, NaN

157.6313, 14.5104,
19.8582

0.0000, NaN, NaN

■ 54.2022, 13.6347,
10.5363

■ 54.2022, 13.6347,
10.5363

■ 49.5664, 19.9540,
12.7639

■ 59.1898, 7.5827,
8.2902

■ 45.3413, 26.4858,
14.9213

■ 64.4735, 1.8163,
6.0503

■ 41.6011, 33.0838,
16.9296

■ 70.0125, -3.6815,
3.8308

■ 38.4255, 39.4873,
18.6746

■ 75.7729, -8.9372,
1.6367

■ 35.8900, 45.3062,
20.0168

■ 81.7272, -13.9810,
-0.5315

■ 34.0483, 50.0719,
20.8303

■ 87.8534, -18.8424,
-2.6758

■ 32.9064, 53.3135,
21.2101

■ 93.9526, -24.5741,
-2.2405

■ 94.4347, -25.2734,
-1.6509

Harmonies

Analogous

The Analogous color harmony consists of three colors that are next to each other on the color wheel.



54.2035, 16.1335, 2.6295



54.2022, 13.6347, 10.5363



54.2035, 6.6320, 15.5728

Triad

The Triadic color harmony groups three colors that are evenly spaced from another and form a triangle on the color wheel.



54.2035, 13.6325, 10.5372



54.2035, -17.3528, 11.0054



54.2035, -3.2310, -16.9231

Complementary

The Complementary color scheme is a pair of colors which are on the opposite of each other on the color wheel.



54.2022, 13.6347, 10.5363



64.2942, -16.4764, -3.5095

Split Complementary

Split-complementary colors differ from the complementary color scheme. The scheme consists of three colors, the original color and two neighbors of the complement color.



54.2035, -11.8064, -13.7022



54.2022, 13.6347, 10.5363



54.2035, -19.6141, 3.2695

Square

The Square scheme is like the rectangle color scheme, but the four colors are evenly spaced on the color wheel.



54.2035, 13.6325, 10.5372



54.2035, -11.2609, 15.8094



54.2035, -17.6525, -5.9213



54.2035, 6.0111, -14.1181

Rectangle

The Rectangle color scheme consists of four colors that form a rectangle on the color wheel.



54.2022, 13.6347, 10.5363



54.2035, 0.5785, 17.1103



54.2035, -17.6525, -5.9213



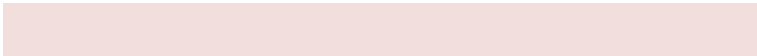
54.2035, -6.2833, -16.5010

Sweetspot

The Sweet Spot groups the original color and five complimentary colors.



54.2035, 13.6325, 10.5372



87.5017, 1.7211, 7.8580



54.5478, 24.3336, -13.6738



40.5604, 1.3278, 3.8939



97.7295, -5.2146, 5.3098



44.2712, -2.3622, 2.4053

Same Dimension

The Same Dimension uses a secret algorithm to generate beautiful new colors.



54.2035, 13.6325, 10.5372



68.8653, 23.8377, 16.1381



61.7473, -0.1803, 17.7662



30.2288, 0.6424, 2.7374



27.0822, 43.4244, 17.4482



5.4954, 6.8664, 3.5064

Inverse Universe

The Inverse Universe completely reimagines the original color for something new.



64.2942, -16.4764, -3.5095



85.1498, -25.0301, -6.5989



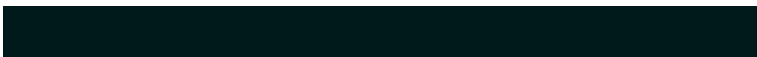
55.8418, -3.3775, -14.9726



31.7328, -3.8026, 0.6544



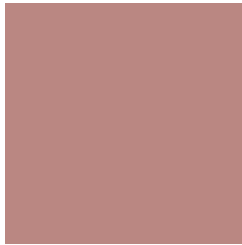
46.5053, -21.5691, -11.5661



8.9600, -4.3331, -1.8452

Previews

White Background



This preview shows how the HunterLab color 54.2022, 13.6347, 10.5363 looks on a white background.

Color Contrast Check

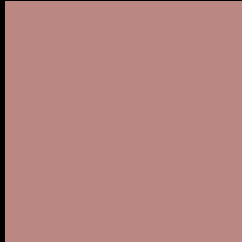
Large Text (above 18pt) WCAG AA ✓ Pass

Any Text WCAG AA ✗ Fail

Large Text (above 18pt) WCAG AAA ✗ Fail

Any Text WCAG AAA ✗ Fail

Black Background



This preview shows how the HunterLab color 54.2022, 13.6347, 10.5363 looks on a black background.

Color Contrast Check

Large Text (above 18pt) WCAG AA ✓ Pass

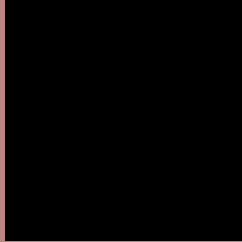
Any Text WCAG AA ✓ Pass

Large Text (above 18pt) WCAG AAA ✓ Pass

Any Text WCAG AAA × Fail

If you want to check with other color combinations, try the [Color Contrast Checker](#).

HunterLab 54.2022, 13.6347, 10.5363 Background



This preview shows how black text looks on a background with the HunterLab color 54.2022, 13.6347, 10.5363.



This preview shows how white text looks on a background with the HunterLab color 54.2022, 13.6347,

Color Blindness Simulation

Color vision deficiency is a very complex topic, and I could not describe the different causes any better than Wikipedia does, so if you want to learn more, you should check out their [article about color blindness](#).

Dichromacy



Original Color

54.2022, 13.6347, 10.5363

Protanopia

54.2377, -2.7184, 7.9112

Deuteranopia

54.1904, 3.9772, 10.7382



Tritanopia

54.1507, 16.7814, 5.2083

Trichromacy



Original Color

54.2022, 13.6347, 10.5363

Protanomaly

54.1899, 2.8094, 8.7638

Deuteranomaly

54.0039, 7.5425, 10.6071

Tritanomaly

54.2678, 15.5698, 7.4422

Monochromacy



Original Color

54.2022, 13.6347, 10.5363

Achromatopsia

55.2257, -2.9467, 3.0005

Achromatomaly

54.7910, 2.4620, 5.6846

CSS Examples

Text

The CSS property to change the color of the text to HunterLab 54.2022, 13.6347, 10.5363 is called "color". The color property can be set on classes, ids or directly on the HTML element.

This example shows how text in the color `rgb(186, 135, 130)` looks like.

```
.text, #text, p{  
    color:rgb(186, 135, 130)  
}
```

If you want to add a text shadow in that color use the text-shadow property, you can generate a text shadow directly with our [CSS Text Shadow Generator](#).

Here you see how black text with a 4 pixel rgb(186, 135, 130) colored shadow looks like.

```
.shadow{ text-shadow: 4px 4px 2px rgb(186, 135, 130) }
```

Border

The CSS property to change the border of an element to HunterLab 54.2022, 13.6347, 10.5363 is called "border". The border property can be set on classes, ids or directly on the HTML element.

This example shows the color as border, it can be applied via the CSS property "border" or "border-color".

```
.border, #border, table{ border:4px solid rgb(186, 135, 130) }
```


If only the border color should be changed use the property `border-color`.

```
.border{ border-color:rgb(186, 135, 130) }
```

If you want to add a box shadow in that color use:

Here you see how a box with a 4 pixel `rgb(186, 135, 130)` colored shadow looks like.

```
.boxshadow{ -moz-box-shadow:4px 4px 4px  
4px rgb(186, 135, 130); -webkit-box-  
shadow:4px 4px 4px 4px rgb(186, 135, 130);  
box-shadow:4px 4px 4px 4px rgb(186, 135,  
130) }
```

Background

The CSS property to change the background color of an element to HunterLab 54.2022, 13.6347, 10.5363 is called "background". The background property can be set on classes, ids or directly on the HTML element.

```
.background, #background, body{  
background: rgb(186, 135, 130) }
```

If only the background color should be changed can be used:

```
.background{ background-color: rgb(186,  
135, 130) }
```

This example shows the color as background, it is applied via the CSS property "background".

To optimize and compress your CSS code, you can use our [online CSS compressor and optimizer](#) based on csstidy. If you want to create a linear or radial gradient as background or border, check our [CSS Gradient Generator](#).

Hey! You found this booklet interesting? Support Converting Colors with the new Membership Option!

The pro membership hides all ads, plus gives you double the colors in the color bucket, and more awesome pro features!

[Learn more, Memberships starting at \\$2.50/m!](#)

**Follow me
on Twitter!**

@ConvertingColor