

Converting Colors

HunterLab(54.2686, 11.4674,
-2.1951)

Have a look what the booklet for
HunterLab(54.2686, 11.4674,
-2.1951) contains.

HunterLab(54.2686, 11.4674, -2.1951)	3
<i>Conversions</i>	4
<i>Details</i>	6
<i>Harmonies</i>	12
<i>Previews</i>	24
<i>Color Blindness Simulation</i>	28
<i>CSS Examples</i>	31

Color

**HunterLab(54.2686, 11.4674,
-2.1951)**

Conversions

Conversions Part 1

Format	Color
Hex	AC8A9F
RGB	172, 138, 159
RGB Percent	67%, 54%, 62%
CMY	0.3255, 0.4588, 0.3765
CMYK	0.00, 0.20, 0.08, 0.33
HSL	323°, 17%, 61%
HSV	323°, 20%, 67%
XYZ	32.3597, 29.4508, 36.7799
YIQ	150.5600, 13.5230, 13.7390

Conversions

Conversions Part 2

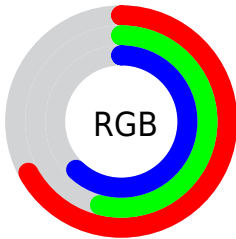
Format	Color
RYB	172, 138, 159
Decimal	11307679
CIELab	61.18, 16.47, -6.22
CIELCh	61, 17.607, 339.305
Yxy	29.4521, 0.3282, 0.2987
Android (android.graphics.Color)	4289497759 (0xFFAC8A9F)
YUV	150.5600, 4.1609, 18.8029
Hunter-Lab	54.2686, 11.4674, -2.1951

Details

The HunterLab color $54.2686, 11.4674, -2.1951$ is a light color, and the websafe version is hex $CC9999$. A complement of this color would be $60.9454, -16.3850, 8.7829$, and the grayscale version is $55.4329, -2.9578, 3.0118$.

A 20% lighter version of the original color is $76.8429, 11.8275, -1.5290$, and $34.6181, 10.5968, -2.7816$ is the 20% darker color. If you saturate the color by 10%, you get $49.6778, 19.1672, -4.7244$, and if you desaturate by 10%, it is $59.1770, 3.8626, 0.5899$.

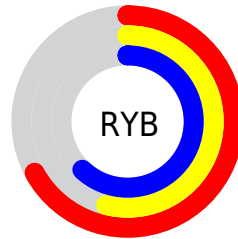
Distribution



Red (67%)

Green (54%)

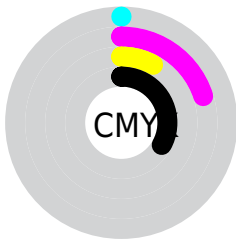
Blue (62%)



Red (67%)

Yellow (54%)

Blue (62%)

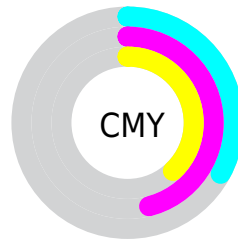


Cyan (0%)

Magenta (20%)

Yellow (8%)

Black (33%)



Cyan (33%)

Magenta (46%)

Yellow (38%)

Brightness & Saturation Gradients

These gradients show how the HunterLab color 54.2686, 11.4674, -2.1951 changes by changing the brightness by 10 percent. The first figure shows a shift by +10% for each color and the second figure -10%.

Similar to the brightness gradients but the following saturation gradients show a change of the HunterLab color 54.2686, 11.4674, -2.1951 by changing the saturation by 10% instead.

■ 54.2686, 11.4674,
-2.1951

■ 54.2686, 11.4674,
-2.1951

173.0151, 11.3508,
2.0271

■ 44.0716, 11.1450,
-2.4371

■ 76.6777, 11.8620,
-1.5484

■ 34.6069, 10.7273,
-2.6191

■ 88.8127, 11.9542,
-1.1546

■ 25.9376, 10.1967,
-2.7321

■ 101.5279, 11.9842,
-0.7178

■ 18.1448, 9.5319,
-2.7653

114.7979, 11.9571,
-0.2409

■ 11.3411, 8.7045,
-2.7036

128.6005, 11.8768,
0.2739

■ 3.6122, 19.6764,
-6.9437

142.9157, 11.7471,

0.0000, NaN, NaN

0.8246

0.0000, NaN, NaN

157.7259, 11.5709,
1.4095

0.0000, NaN, NaN

■ 54.2686, 11.4674,
-2.1951

■ 54.2686, 11.4674,
-2.1951

■ 49.6778, 19.1672,
-4.7244

■ 59.1770, 3.8626,
0.5899

■ 45.4559, 26.8722,
-6.9088

■ 64.3540, -3.6005,
3.5612

■ 41.6689, 34.4028,
-8.6242

■ 69.7641, -10.9128,
6.6730

■ 38.3889, 41.4687,
-9.7192

■ 75.3774, -18.0801,
9.8929

■ 35.6881, 47.6573,
-10.0324

■ 81.1697, -25.1164,
13.1982

■ 33.6247, 52.4832,
-9.4360

■ 87.1213, -32.0381,
16.5730

■ 32.2211, 55.5281,
-7.8999

■ 92.0329, -37.3202,
18.8314

■ 31.3498, 56.9606,
-5.6721

■ 92.2090, -36.2945,
16.2953

■ 31.3307, 56.9914,
-5.6193

■ 92.3920, -35.2303,
13.6639

Harmonies

Analogous

The Analogous color harmony consists of three colors that are next to each other on the color wheel.



54.2698, 6.6759, -8.9464



54.2686, 11.4674, -2.1951



54.2698, 12.2951, 5.1549

Triad

The Triadic color harmony groups three colors that are evenly spaced from another and form a triangle on the color wheel.



54.2698, 11.4658, -2.1940



54.2698, -5.2422, 14.9641



54.2698, -13.7540, -6.6143

Complementary

The Complementary color scheme is a pair of colors which are on the opposite of each other on the color wheel.



54.2686, 11.4674, -2.1951



60.9454, -16.3850, 8.7829

Split Complementary

Split-complementary colors differ from the complementary color scheme. The scheme consists of three colors, the original color and two neighbors of the complement color.



54.2698, -16.5852, 0.6570



54.2686, 11.4674, -2.1951



54.2698, -11.8522, 12.6510

Square

The Square scheme is like the rectangle color scheme, but the four colors are evenly spaced on the color wheel.



54.2698, 11.4658, -2.1940



54.2698, 2.3651, 14.4198



54.2698, -15.9087, 7.6425



54.2698, -7.9690, -11.7324

Rectangle

The Rectangle color scheme consists of four colors that form a rectangle on the color wheel.



54.2686, 11.4674, -2.1951



54.2698, 10.4474, 9.3296



54.2698, -15.9087, 7.6425



54.2698, -15.0678, -4.3032

Sweetspot

The Sweet Spot groups the original color and five complimentary colors.



54.2698, 11.4658, -2.1940



82.2166, 1.5023, 2.2330



52.6169, 6.9791, -11.4356



38.1270, 0.9928, 0.9259



93.2148, -4.9737, 5.0645



40.3295, -2.1519, 2.1912

Same Dimension

The Same Dimension uses a secret algorithm to generate beautiful new colors.



54.2698, 11.4658, -2.1940



70.1537, 20.2711, -4.5941



53.7755, 8.8772, 4.8425



28.4523, 1.6854, 0.3457



27.0476, 49.2364, -5.1316



4.6233, 8.6136, -2.4082

Inverse Universe

The Inverse Universe completely reimagines the original color for something new.



54.2698, 11.4658, -2.1940



70.1537, 20.2711, -4.5941



61.4136, -13.7299, 2.0880



28.4523, 1.6854, 0.3457



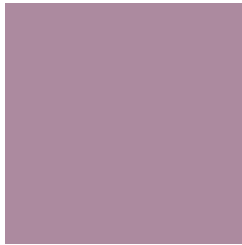
27.0476, 49.2364, -5.1316



4.6233, 8.6136, -2.4082

Previews

White Background



This preview shows how the HunterLab color 54.2686, 11.4674, -2.1951 looks on a white background.

Color Contrast Check

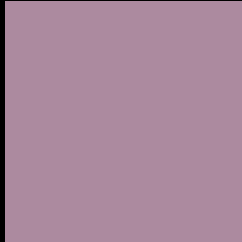
Large Text (above 18pt) WCAG AA ✓ Pass

Any Text WCAG AA × Fail

Large Text (above 18pt) WCAG AAA × Fail

Any Text WCAG AAA × Fail

Black Background



This preview shows how the HunterLab color 54.2686, 11.4674, -2.1951 looks on a black background.

Color Contrast Check

Large Text (above 18pt) WCAG AA ✓ Pass

Any Text WCAG AA ✓ Pass

Large Text (above 18pt) WCAG AAA ✓ Pass

Any Text WCAG AAA × Fail

If you want to check with other color combinations, try the [Color Contrast Checker](#).

HunterLab 54.2686, 11.4674, -2.1951 Background



This preview shows how black text looks on a background with the HunterLab color 54.2686, 11.4674, -2.1951.



This preview shows how white text looks on a background with the HunterLab color 54.2686, 11.4674, -2.1951.

-2.1951.

Color Blindness Simulation

Color vision deficiency is a very complex topic, and I could not describe the different causes any better than Wikipedia does, so if you want to learn more, you should check out their [article about color blindness](#).

Dichromacy



Original Color

54.2686, 11.4674, -2.1951

Protanopia

54.4599, -0.2904, -4.6842

Deuteranopia

54.4832, 3.7453, -1.5637



Tritanopia

54.1527, 9.1703, 1.9377

Trichromacy



Original Color

54.2686, 11.4674, -2.1951

Protanomaly

54.3357, 3.5072, -3.7563

Deuteranomaly

54.4069, 6.3257, -1.6149

Tritanomaly

54.2430, 9.6446, 0.6521

Monochromacy



Original Color

54.2686, 11.4674, -2.1951

Achromatopsia

55.6299, -2.9683, 3.0225

Achromatomaly

55.0107, 2.4053, 0.9894

CSS Examples

Text

The CSS property to change the color of the text to HunterLab 54.2686, 11.4674, -2.1951 is called "color". The color property can be set on classes, ids or directly on the HTML element.

This example shows how text in the color `rgb(172, 138, 159)` looks like.

```
.text, #text, p{  
    color:rgb(172, 138, 159)  
}
```

If you want to add a text shadow in that color use the text-shadow property, you can generate a text shadow directly with our [CSS Text Shadow Generator](#).

Here you see how black text with a 4 pixel rgb(172, 138, 159) colored shadow looks like.

```
.shadow{ text-shadow: 4px 4px 2px rgb(172, 138, 159) }
```

Border

The CSS property to change the border of an element to HunterLab 54.2686, 11.4674, -2.1951 is called "border". The border property can be set on classes, ids or directly on the HTML element.

This example shows the color as border, it can be applied via the CSS property "border" or "border-color".

```
.border, #border, table{ border:4px solid rgb(172, 138, 159) }
```


If only the border color should be changed use the property `border-color`.

```
.border{ border-color:rgb(172, 138, 159) }
```

If you want to add a box shadow in that color use:

Here you see how a box with a 4 pixel `rgb(172, 138, 159)` colored shadow looks like.

```
.boxshadow{ -moz-box-shadow:4px 4px 4px  
4px rgb(172, 138, 159); -webkit-box-  
shadow:4px 4px 4px 4px rgb(172, 138, 159);  
box-shadow:4px 4px 4px 4px rgb(172, 138,  
159) }
```

Background

The CSS property to change the background color of an element to HunterLab 54.2686, 11.4674, -2.1951 is called "background". The background property can be set on classes, ids or directly on the HTML element.

```
.background, #background, body{  
background: rgb(172, 138, 159) }
```

If only the background color should be changed can be used:

```
.background{ background-color: rgb(172,  
138, 159) }
```

This example shows the color as background, it is applied via the CSS property "background".

To optimize and compress your CSS code, you can use our [online CSS compressor and optimizer](#) based on csstidy. If you want to create a linear or radial gradient as background or border, check our [CSS Gradient Generator](#).

Hey! You found this booklet interesting? Support Converting Colors with the new Membership Option!

The pro membership hides all ads, plus gives you double the colors in the color bucket, and more awesome pro features!

[Learn more, Memberships starting at \\$2.50/m!](#)

**Follow me
on Twitter!**

@ConvertingColor