

Converting Colors

HunterLab(54.2854, 68.7881,
2.6934)

Have a look what the booklet for
HunterLab(54.2854, 68.7881,
2.6934) contains.

HunterLab(54.3405, 68.6310, 2.7410)	3
<i>Conversions</i>	4
<i>Details</i>	6
<i>Harmonies</i>	12
<i>Previews</i>	24
<i>Color Blindness Simulation</i>	28
<i>CSS Examples</i>	31

Color

**HunterLab(54.3405, 68.6310,
2.7410)**

Conversions

Conversions Part 1

Format	Color
Hex	FF5297
RGB	255, 82, 151
RGB Percent	100%, 32%, 59%
CMY	0.0000, 0.6784, 0.4078
CMYK	0.00, 0.68, 0.41, 0.00
HSL	336°, 100%, 66%
HSV	336°, 68%, 100%
XYZ	49.8431, 29.5289, 32.3507
YIQ	141.5930, 80.9590, 58.1350

Conversions

Conversions Part 2

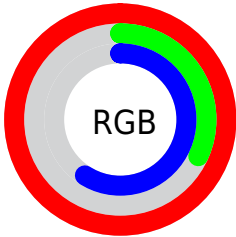
Format	Color
R_{YB}	255, 82, 151
Decimal	16732823
CIE _{Lab}	61.25, 70.25, -0.27
CIE _{LCh}	61, 70.246, 359.778
Yxy	29.5305, 0.4461, 0.2643
Android (android.graphics.Color)	4294922903 (0xFFFF5297)
YUV	141.5930, 4.6377, 99.4579
Hunter-Lab	54.3405, 68.6310, 2.7410

Details

The HunterLab color **54.3405, 68.6310, 2.7410** is a light color, and the websafe version is hex **FF6699**. The color can be described as light muted rose. A complement of this color would be **87.6697, -55.4787, 21.6301**, and the grayscale version is **51.8079, -2.7643, 2.8148**.

A 20% lighter version of the original color is **66.8712, 47.8971, -9.1654**, and **35.0108, 62.5850, 2.2516** is the 20% darker color. If you saturate the color by 10%, you get **50.8982, 76.1061, 5.7056**, and if you desaturate by 10%, it is **58.8621, 59.1226, 0.8065**.

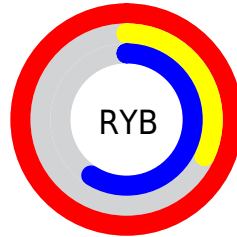
Distribution



Red (100%)

Green (32%)

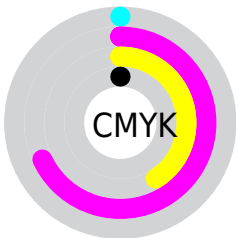
Blue (59%)



Red (100%)

Yellow (32%)

Blue (59%)

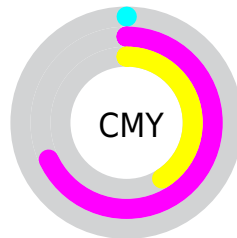


Cyan (0%)

Magenta (68%)

Yellow (41%)

Black (0%)



Cyan (0%)

Magenta (68%)

Yellow (41%)

Brightness & Saturation Gradients

These gradients show how the HunterLab color 54.3405, 68.6310, 2.7410 changes by changing the brightness by 10 percent. The first figure shows a shift by +10% for each color and the second figure -10%.

Similar to the brightness gradients but the following saturation gradients show a change of the HunterLab color 54.3405, 68.6310, 2.7410 by changing the saturation by 10% instead.

54.3405, 68.6310,
2.7410

54.3405, 68.6310,
2.7410

173.1213, 85.2531,
9.1067

44.1390, 66.3474,
2.2014

76.7587, 72.9574,
3.9365

34.6691, 64.0395,
1.7015

88.8978, 74.9852,
4.5851

25.9941, 61.7986,
1.2462

101.6168, 76.9182,
5.2659

18.1949, 59.8623,
0.8404

114.8906, 78.7582,
5.9774

11.3839, 58.9091,
0.4912

128.6967, 80.5080,
6.7183

3.7155, 103.9128,
-0.1014

143.0154, 82.1712,

0.0000, INF, NaN

7.4874

0.0000, NaN, NaN

157.8289, 83.7517,
8.2839

0.0000, NaN, NaN

■ 54.3405, 68.6310,
2.7410

■ 54.3405, 68.6310,
2.7410

■ 50.8982, 76.1061,
5.7056

■ 58.8621, 59.1226,
0.8065

■ 48.5848, 80.8242,
9.5359

■ 64.3438, 48.4032,
-0.1152


■ 47.3283, 82.5569,
13.8632

■ 70.6534, 37.1153,
-0.1372

■ 47.1309, 82.7358,
14.7760

■ 77.6627, 25.6835,
0.5904

■ 85.2607, 14.3465,
1.9231

 93.3555, 3.2170,
3.7378

100.0000, -5.3358,
5.4332

Harmonies

Analogous

The Analogous color harmony consists of three colors that are next to each other on the color wheel.



54.3420, 57.2696, -33.0572



54.3405, 68.6310, 2.7410



54.3420, 57.5859, 23.9354

Triad

The Triadic color harmony groups three colors that are evenly spaced from another and form a triangle on the color wheel.



54.3420, 68.6266, 2.7425



54.3420, -28.9524, 32.4473



54.3420, -29.2658, -70.1875

Complementary

The Complementary color scheme is a pair of colors which are on the opposite of each other on the color wheel.



54.3405, 68.6310, 2.7410



87.6697, -55.4787, 21.6301

Split Complementary

Split-complementary colors differ from the complementary color scheme. The scheme consists of three colors, the original color and two neighbors of the complement color.



54.3420, -44.8419, -32.4623



54.3405, 68.6310, 2.7410



54.3420, -44.6909, 24.1374

Square

The Square scheme is like the rectangle color scheme, but the four colors are evenly spaced on the color wheel.



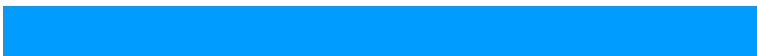
54.3420, 68.6266, 2.7425



54.3420, -2.6762, 34.3371



54.3420, -49.8099, 3.1726



54.3420, -3.1284, -86.9757

Rectangle

The Rectangle color scheme consists of four colors that form a rectangle on the color wheel.



54.3405, 68.6310, 2.7410



54.3420, 40.1458, 30.5645



54.3420, -49.8099, 3.1726



54.3420, -35.6835, -58.7867

Sweetspot

The Sweet Spot groups the original color and five complimentary colors.



54.3420, 68.6266, 2.7425



83.5739, 16.7813, 1.5904



48.6526, 66.2729, -84.1528



37.6667, 9.2353, 0.5520

0.0000, NaN, NaN



46.2646, -2.4686, 2.5136

Same Dimension

The Same Dimension uses a secret algorithm to generate beautiful new colors.



54.3420, 68.6266, 2.7425



50.0448, 77.9223, 6.8359



55.5443, 54.6568, 26.6598



42.5524, 2.3382, 1.5760



34.1093, 59.9540, 10.0959



10.7408, 19.0646, 1.7420

Inverse Universe

The Inverse Universe completely reimagines the original color for something new.



54.3420, 68.6266, 2.7425



50.0448, 77.9223, 6.8359



83.6596, -35.4162, -16.1182



42.5524, 2.3382, 1.5760



34.1093, 59.9540, 10.0959



10.7408, 19.0646, 1.7420

Previews

White Background



This preview shows how the HunterLab color 54.3405, 68.6310, 2.7410 looks on a white background.

Color Contrast Check

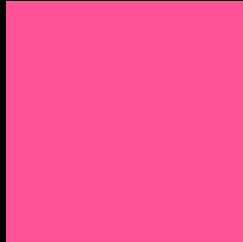
Large Text (above 18pt) WCAG AA ✓ Pass

Any Text WCAG AA × Fail

Large Text (above 18pt) WCAG AAA × Fail

Any Text WCAG AAA × Fail

Black Background



This preview shows how the HunterLab color 54.3405, 68.6310, 2.7410 looks on a black background.

Color Contrast Check

Large Text (above 18pt) WCAG AA ✓ Pass

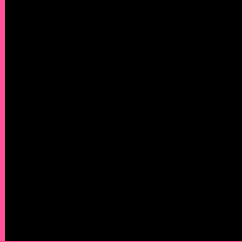
Any Text WCAG AA ✓ Pass

Large Text (above 18pt) WCAG AAA ✓ Pass

Any Text WCAG AAA × Fail

If you want to check with other color combinations, try the [Color Contrast Checker](#).

HunterLab 54.3405, 68.6310, 2.7410 Background



This preview shows how black text looks on a background with the HunterLab color 54.3405, 68.6310, 2.7410.



This preview shows how white text looks on a background with the HunterLab color 54.3405, 68.6310,

Color Blindness Simulation

Color vision deficiency is a very complex topic, and I could not describe the different causes any better than Wikipedia does, so if you want to learn more, you should check out their [article about color blindness](#).

Dichromacy



Original Color

54.3405, 68.6310, 2.7410

Protanopia

54.7242, 2.5900, -19.6365

Deuteranopia

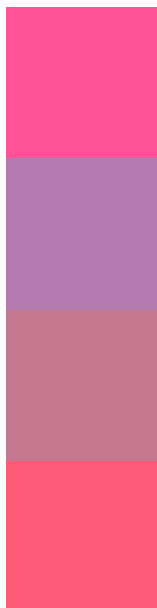
54.3051, 3.6242, 5.5857



Tritanopia

54.4251, 57.0926, 21.4017

Trichromacy



Original Color

54.3405, 68.6310, 2.7410

Protanomaly

51.9652, 24.9638, -14.4062

Deuteranomaly

52.5256, 26.9344, 2.5997

Tritanomaly

54.3386, 60.9229, 15.5067

Monochromacy



Original Color

54.3405, 68.6310, 2.7410

Achromatopsia

52.0094, -2.7751, 2.8258

Achromatomaly

50.5416, 22.2926, 0.1089

CSS Examples

Text

The CSS property to change the color of the text to HunterLab 54.3405, 68.6310, 2.7410 is called "color". The color property can be set on classes, ids or directly on the HTML element.

This example shows how text in the color `rgb(255, 82, 151)` looks like.

```
.text, #text, p{  
    color:rgb(255, 82, 151)  
}
```

If you want to add a text shadow in that color use the text-shadow property, you can generate a text shadow directly with our [CSS Text Shadow Generator](#).

Here you see how black text with a 4 pixel rgb(255, 82, 151) colored shadow looks like.

```
.shadow{ text-shadow: 4px 4px 2px rgb(255, 82, 151) }
```

Border

The CSS property to change the border of an element to HunterLab 54.3405, 68.6310, 2.7410 is called "border". The border property can be set on classes, ids or directly on the HTML element.

This example shows the color as border, it can be applied via the CSS property "border" or "border-color".

```
.border, #border, table{ border:4px solid rgb(255, 82, 151) }
```


If only the border color should be changed use the property border-color.

```
.border{ border-color:rgb(255, 82, 151) }
```

If you want to add a box shadow in that color use:

Here you see how a box with a 4 pixel rgb(255, 82, 151) colored shadow looks like.

```
.boxshadow{ -moz-box-shadow:4px 4px 4px  
4px rgb(255, 82, 151); -webkit-box-  
shadow:4px 4px 4px 4px rgb(255, 82, 151);  
box-shadow:4px 4px 4px 4px rgb(255, 82,  
151) }
```

Background

The CSS property to change the background color of an element to HunterLab 54.3405, 68.6310, 2.7410 is called "background". The background property can be set on classes, ids or directly on the HTML element.

```
.background, #background, body{  
background: rgb(255, 82, 151) }
```

If only the background color should be changed can be used:

```
.background{ background-color: rgb(255, 82,  
151) }
```

This example shows the color as background, it is applied via the CSS property "background".

To optimize and compress your CSS code, you can use our [online CSS compressor and optimizer](#) based on csstidy. If you want to create a linear or radial gradient as background or border, check our [CSS Gradient Generator](#).

Hey! You found this booklet interesting? Support Converting Colors with the new Membership Option!

The pro membership hides all ads, plus gives you double the colors in the color bucket, and more awesome pro features!

[Learn more, Memberships starting at \\$2.50/m!](#)

**Follow me
on Twitter!**

@ConvertingColor