

Converting Colors

HunterLab(54.3490, 10.1101,
12.9763)

Have a look what the booklet for
HunterLab(54.3490, 10.1101,
12.9763) contains.

HunterLab(54.3850, 9.9142, 12.8967)	3
<i>Conversions</i>	4
<i>Details</i>	6
<i>Harmonies</i>	12
<i>Previews</i>	24
<i>Color Blindness Simulation</i>	28
<i>CSS Examples</i>	31

Color

**HunterLab(54.3850, 9.9142,
12.8967)**

Conversions

Conversions Part 1

Format	Color
Hex	B68A7C
RGB	182, 138, 124
RGB Percent	71%, 54%, 49%
CMY	0.2863, 0.4588, 0.5137
CMYK	0.00, 0.24, 0.32, 0.29
HSL	14°, 28%, 60%
HSV	14°, 32%, 71%
XYZ	32.0180, 29.5773, 23.0903
YIQ	149.5600, 30.7180, 4.9740

Conversions

Conversions Part 2

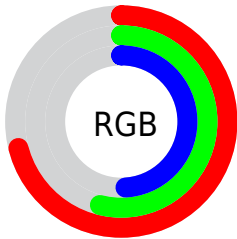
Format	Color
R _Y B	182, 142, 124
Decimal	11963004
CIE Lab	61.29, 14.76, 13.99
CIE LCh	61, 20.337, 43.461
Yxy	29.5787, 0.3781, 0.3493
Android (android.graphics.Color)	4290153084 (0xFFB68A7C)
YUV	149.5600, -12.6011, 28.4499
Hunter-Lab	54.3850, 9.9142, 12.8967

Details

The HunterLab color $54.3850, 9.9142, 12.8967$ is a dark color, and the websafe version is hex $CC9999$. A complement of this color would be $59.7215, -12.5813, -7.3564$, and the grayscale version is $55.0895, -2.9394, 2.9931$.

A 20% lighter version of the original color is $76.9573, 10.0178, 15.5502$, and $34.7515, 9.3585, 10.2206$ is the 20% darker color. If you saturate the color by 10%, you get $50.4448, 14.7464, 15.3790$, and if you desaturate by 10%, it is $58.5655, 5.3641, 10.1936$.

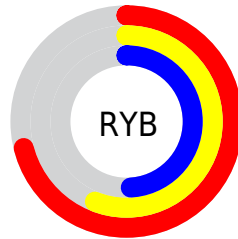
Distribution



Red (71%)

Green (54%)

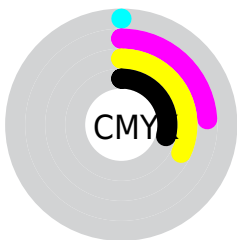
Blue (49%)



Red (71%)

Yellow (56%)

Blue (49%)

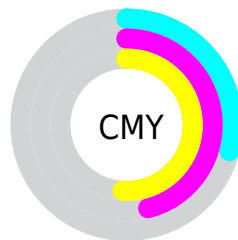


Cyan (0%)

Magenta (24%)

Yellow (32%)

Black (29%)



Cyan (29%)

Magenta (46%)

Yellow (51%)

Brightness & Saturation Gradients

These gradients show how the HunterLab color 54.3850, 9.9142, 12.8967 changes by changing the brightness by 10 percent. The first figure shows a shift by +10% for each color and the second figure -10%.

Similar to the brightness gradients but the following saturation gradients show a change of the HunterLab color 54.3850, 9.9142, 12.8967 by changing the saturation by 10% instead.

■ 54.3850, 9.9142,
12.8967

■ 54.3850, 9.9142,
12.8967

173.1865, 9.1668,
24.9184

■ 44.1803, 9.6770,
11.5280

■ 76.8084, 10.1488,
15.5808

■ 34.7072, 9.3499,
10.1244

■ 88.9499, 10.1663,
16.9091

■ 26.0287, 8.9154,
8.6668

■ 101.6714, 10.1246,
18.2350

■ 18.2257, 8.3524,
7.1225

114.9474, 10.0283,
19.5617

■ 11.4102, 7.6316,
5.9983

128.7557, 9.8813,
20.8917

■ 3.7775, 16.8258,
2.6443

143.0765, 9.6868,

0.0000, NaN, NaN

22.2269

0.0000, NaN, NaN

157.8921, 9.4479,
23.5687

0.0000, NaN, NaN

■ 54.3850, 9.9142,
12.8967

■ 54.3850, 9.9142,
12.8967

■ 50.4448, 14.7464,
15.3790

■ 58.5655, 5.3641,
10.1936

■ 46.7761, 19.8583,
17.5778

■ 62.9526, 1.0918,
7.3138

■ 43.4202, 25.2058,
19.4191

■ 67.5228, -2.9254,
4.2934

■ 40.4216, 30.6967,
20.8169

■ 72.2550, -6.7125,
1.1586

■ 37.8262, 36.1705,
21.6861

■ 77.1319, -10.2948,
-2.0712

■ 35.6758, 41.3905,
21.9691

■ 82.1388, -13.6967,
-5.3814

■ 34.2669, 45.2047,
21.9065

■ 87.2634, -16.9405,
-8.7610

■ 91.9659, -23.0416,
-4.7276

■ 94.1728, -26.2421,
-1.9945

Harmonies

Analogous

The Analogous color harmony consists of three colors that are next to each other on the color wheel.



54.3863, 14.5241, 6.5711



54.3850, 9.9142, 12.8967



54.3863, 1.9895, 16.2256

Triad

The Triadic color harmony groups three colors that are evenly spaced from another and form a triangle on the color wheel.



54.3863, 9.9120, 12.8975



54.3863, -18.1744, 7.3404



54.3863, 1.0851, -15.1079

Complementary

The Complementary color scheme is a pair of colors which are on the opposite of each other on the color wheel.



54.3850, 9.9142, 12.8967



59.7215, -12.5813, -7.3564

Split Complementary

Split-complementary colors differ from the complementary color scheme. The scheme consists of three colors, the original color and two neighbors of the complement color.



54.3863, -7.6320, -14.8137



54.3850, 9.9142, 12.8967



54.3863, -18.3824, -0.9162

Square

The Square scheme is like the rectangle color scheme, but the four colors are evenly spaced on the color wheel.



54.3863, 9.9120, 12.8975



54.3863, -14.0473, 13.3834



54.3863, -14.6348, -9.2983



54.3863, 9.2138, -10.0475

Rectangle

The Rectangle color scheme consists of four colors that form a rectangle on the color wheel.



54.3850, 9.9142, 12.8967



54.3863, -3.9213, 16.6857



54.3863, -14.6348, -9.2983



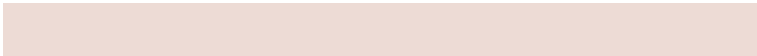
54.3863, -1.8808, -15.6535

Sweetspot

The Sweet Spot groups the original color and five complimentary colors.



54.3863, 9.9120, 12.8975



85.7925, 0.5281, 9.1695



52.1587, 23.7465, -9.8149



39.9205, 0.6132, 4.5727



96.5975, -5.1542, 5.2483



43.2801, -2.3093, 2.3515

Same Dimension

The Same Dimension uses a secret algorithm to generate beautiful new colors.



54.3863, 9.9120, 12.8975



69.5962, 17.7146, 19.6673



62.3436, -4.1290, 20.2084



30.5859, 0.0261, 3.1323



28.9502, 37.5222, 18.4959



6.2817, 4.7427, 3.9538

Inverse Universe

The Inverse Universe completely reimagines the original color for something new.



59.7215, -12.5813, -7.3564



78.1856, -18.6854, -12.9941



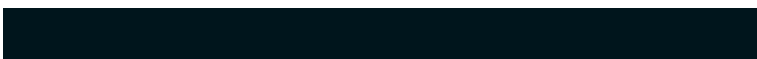
51.2480, 1.0720, -19.6033



31.3580, -3.2015, 0.2090



39.1668, -11.8459, -23.3833



7.9414, -3.0301, -3.3851

Previews

White Background



This preview shows how the HunterLab color 54.3850, 9.9142, 12.8967 looks on a white background.

Color Contrast Check

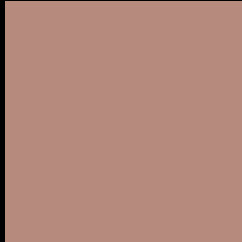
Large Text (above 18pt) WCAG AA ✓ Pass

Any Text WCAG AA × Fail

Large Text (above 18pt) WCAG AAA × Fail

Any Text WCAG AAA × Fail

Black Background



This preview shows how the HunterLab color 54.3850, 9.9142, 12.8967 looks on a black background.

Color Contrast Check

Large Text (above 18pt) WCAG AA ✓ Pass

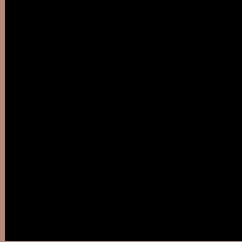
Any Text WCAG AA ✓ Pass

Large Text (above 18pt) WCAG AAA ✓ Pass

Any Text WCAG AAA × Fail

If you want to check with other color combinations, try the [Color Contrast Checker](#).

HunterLab 54.3850, 9.9142, 12.8967 Background



This preview shows how black text looks on a background with the HunterLab color 54.3850, 9.9142, 12.8967.



This preview shows how white text looks on a background with the HunterLab color 54.3850, 9.9142,

Color Blindness Simulation

Color vision deficiency is a very complex topic, and I could not describe the different causes any better than Wikipedia does, so if you want to learn more, you should check out their [article about color blindness](#).

Dichromacy



Original Color

54.3850, 9.9142, 12.8967

Protanopia

54.5283, -3.5368, 10.9556

Deuteranopia

54.5279, 3.4120, 13.2841



Tritanopia

54.3715, 14.9671, 4.5542

Trichromacy



Original Color

54.3850, 9.9142, 12.8967

Protanomaly

54.2938, 1.3838, 11.5535

Deuteranomaly

54.4002, 5.7938, 13.1993

Tritanomaly

54.2971, 12.9667, 7.8414

Monochromacy



Original Color

54.3850, 9.9142, 12.8967

Achromatopsia

55.2257, -2.9467, 3.0005

Achromatomaly

54.9202, 1.3523, 6.6609

CSS Examples

Text

The CSS property to change the color of the text to HunterLab 54.3850, 9.9142, 12.8967 is called "color". The color property can be set on classes, ids or directly on the HTML element.

This example shows how text in the color `rgb(182, 138, 124)` looks like.

```
.text, #text, p{  
    color:rgb(182, 138, 124)  
}
```

If you want to add a text shadow in that color use the text-shadow property, you can generate a text shadow directly with our [CSS Text Shadow Generator](#).

Here you see how black text with a 4 pixel rgb(182, 138, 124) colored shadow looks like.

```
.shadow{ text-shadow: 4px 4px 2px rgb(182, 138, 124) }
```

Border

The CSS property to change the border of an element to HunterLab 54.3850, 9.9142, 12.8967 is called "border". The border property can be set on classes, ids or directly on the HTML element.

This example shows the color as border, it can be applied via the CSS property "border" or "border-color".

```
.border, #border, table{ border:4px solid rgb(182, 138, 124) }
```


If only the border color should be changed use the property `border-color`.

```
.border{ border-color:rgb(182, 138, 124) }
```

If you want to add a box shadow in that color use:

Here you see how a box with a 4 pixel `rgb(182, 138, 124)` colored shadow looks like.

```
.boxshadow{ -moz-box-shadow:4px 4px 4px  
4px rgb(182, 138, 124); -webkit-box-  
shadow:4px 4px 4px 4px rgb(182, 138, 124);  
box-shadow:4px 4px 4px 4px rgb(182, 138,  
124) }
```

Background

The CSS property to change the background color of an element to HunterLab 54.3850, 9.9142, 12.8967 is called "background". The background property can be set on classes, ids or directly on the HTML element.

```
.background, #background, body{  
background: rgb(182, 138, 124) }
```

If only the background color should be changed can be used:

```
.background{ background-color: rgb(182,  
138, 124) }
```

This example shows the color as background, it is applied via the CSS property "background".

To optimize and compress your CSS code, you can use our [online CSS compressor and optimizer](#) based on csstidy. If you want to create a linear or radial gradient as background or border, check our [CSS Gradient Generator](#).

Hey! You found this booklet interesting? Support Converting Colors with the new Membership Option!

The pro membership hides all ads, plus gives you double the colors in the color bucket, and more awesome pro features!

[Learn more, Memberships starting at \\$2.50/m!](#)

**Follow me
on Twitter!**

@ConvertingColor