

Converting Colors

HunterLab(54.3710, 1.2859,
14.9041)

Have a look what the booklet for
HunterLab(54.3710, 1.2859,
14.9041) contains.

HunterLab(54.3869, 1.2877, 14.8508)	3
<i>Conversions</i>	4
<i>Details</i>	6
<i>Harmonies</i>	12
<i>Previews</i>	24
<i>Color Blindness Simulation</i>	28
<i>CSS Examples</i>	31

Color

**HunterLab(54.3869, 1.2877,
14.8508)**

Conversions

Conversions Part 1

Format	Color
Hex	A89076
RGB	168, 144, 118
RGB Percent	66%, 56%, 46%
CMY	0.3412, 0.4353, 0.5373
CMYK	0.00, 0.14, 0.30, 0.34
HSL	31°, 22%, 56%
HSV	31°, 30%, 66%
XYZ	29.3917, 29.5793, 21.2998
YIQ	148.2120, 22.6500, -2.9980

Conversions

Conversions Part 2

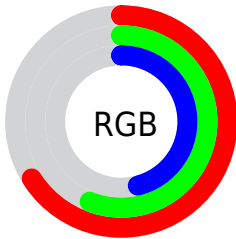
Format	Color
R_{YB}	164, 168, 118
Decimal	11047030
CIE _{Lab}	61.29, 4.97, 17.16
CIE _{LCh}	61, 17.863, 73.849
Yxy	29.5807, 0.3662, 0.3685
Android (android.graphics.Color)	4289237110 (0xFFA89076)
YUV	148.2120, -14.8945, 17.3541
Hunter-Lab	54.3869, 1.2877, 14.8508

Details

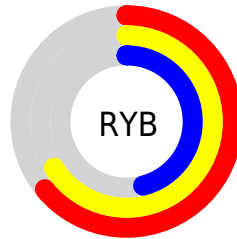
The HunterLab color $54.3869, 1.2877, 14.8508$ is a dark color, and the websafe version is hex 999966 . A complement of this color would be $51.0136, -4.5551, -11.7015$, and the grayscale version is $54.5567, -2.9110, 2.9642$.

A 20% lighter version of the original color is $76.9011, 0.4923, 18.0738$, and $34.7742, 1.6585, 11.5774$ is the 20% darker color. If you saturate the color by 10%, you get $51.8269, 3.3397, 17.8499$, and if you desaturate by 10%, it is $57.0498, -0.5063, 11.3994$.

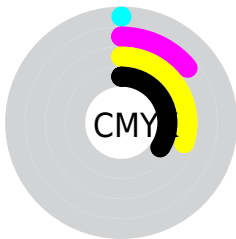
Distribution



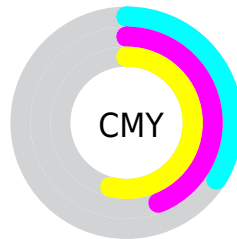
- Red (66%)
- Green (56%)
- Blue (46%)



- Red (64%)
- Yellow (66%)
- Blue (46%)



- Cyan (0%)
- Magenta (14%)
- Yellow (30%)
- Black (34%)



- Cyan (34%)
- Magenta (44%)
- Yellow (54%)

Brightness & Saturation Gradients

These gradients show how the HunterLab color 54.3869, 1.2877, 14.8508 changes by changing the brightness by 10 percent. The first figure shows a shift by +10% for each color and the second figure -10%.

Similar to the brightness gradients but the following saturation gradients show a change of the HunterLab color 54.3869, 1.2877, 14.8508 by changing the saturation by 10% instead.

■ 54.3869, 1.2877,
14.8508

■ 54.3869, 1.2877,
14.8508

173.1892, -3.1339,
28.2167

■ 44.1821, 1.5591,
13.2803

■ 76.8105, 0.5849,
17.8938

■ 34.7088, 1.7729,
11.6550

■ 88.9521, 0.1660,
19.3847

■ 26.0302, 1.9187,
9.9497

■ 101.6737, -0.2941,
20.8641

■ 18.2270, 1.9840,
8.1222

114.9498, -0.7928,
22.3366

■ 11.4113, 1.9490,
7.1493

128.7582, -1.3279,
23.8056

■ 3.7801, 5.5260,
2.6461

143.0791, -1.8976,

0.0000, NaN, NaN

25.2740

0.0000, NaN, NaN

157.8948, -2.5000,
26.7437

0.0000, NaN, NaN

■ 54.3869, 1.2877,
14.8508

■ 54.3869, 1.2877,
14.8508

■ 51.8269, 3.3397,
17.8499

■ 57.0498, -0.5063,
11.3994

■ 49.3741, 5.6682,
20.3521

■ 59.8042, -2.0520,
7.5343

■ 47.0384, 8.2797,
22.3167

■ 62.6446, -3.3678,
3.2945

■ 44.8286, 11.1754,
23.7069

■ 65.5645, -4.4704,
-1.2849

■ 42.7537, 14.3459,
24.4969

■ 68.5584, -5.3763,
-6.1726

■ 40.8215, 17.7665,
24.6827

■ 71.6210, -6.1010,
-11.3402

■ 39.0307, 21.3553,
24.4069

■ 74.7477, -6.6592,
-16.7627

■ 38.9894, 21.4409,
24.4004

■ 77.9344, -7.0644,
-22.4181

■ 80.5908, -10.5757,
-20.1276

Harmonies

Analogous

The Analogous color harmony consists of three colors that are next to each other on the color wheel.



54.3881, 8.2185, 11.8618



54.3869, 1.2877, 14.8508



54.3881, -6.4123, 14.9628

Triad

The Triadic color harmony groups three colors that are evenly spaced from another and form a triangle on the color wheel.



54.3881, 1.2858, 14.8515



54.3881, -16.5791, -0.5288



54.3881, 7.7643, -8.2382

Complementary

The Complementary color scheme is a pair of colors which are on the opposite of each other on the color wheel.



54.3869, 1.2877, 14.8508



51.0136, -4.5551, -11.7015

Split Complementary

Split-complementary colors differ from the complementary color scheme. The scheme consists of three colors, the original color and two neighbors of the complement color.



54.3881, 0.6937, -12.6103



54.3869, 1.2877, 14.8508



54.3881, -13.2006, -7.7574

Square

The Square scheme is like the rectangle color scheme, but the four colors are evenly spaced on the color wheel.



54.3881, 1.2858, 14.8515



54.3881, -16.4403, 6.7435



54.3881, -6.9725, -12.4230



54.3881, 12.0990, -1.1155

Rectangle

The Rectangle color scheme consists of four colors that form a rectangle on the color wheel.



54.3869, 1.2877, 14.8508



54.3881, -10.9280, 13.4299



54.3881, -6.9725, -12.4230



54.3881, 5.6120, -10.1199

Sweetspot

The Sweet Spot groups the original color and five complimentary colors.



54.3881, 1.2858, 14.8515



80.7865, -2.8783, 9.8226



48.2079, 17.5426, -1.5426



37.4692, -1.2177, 4.9431



92.0917, -4.9138, 5.0035



39.3538, -2.0998, 2.1382

Same Dimension

The Same Dimension uses a secret algorithm to generate beautiful new colors.



54.3881, 1.2858, 14.8515



70.8700, 3.6022, 22.8619



61.2756, -10.3893, 20.9914



28.5719, -1.0103, 3.4996



34.0338, 18.2886, 21.2916



6.1922, 1.0384, 3.8338

Inverse Universe

The Inverse Universe completely reimagines the original color for something new.



51.0136, -4.5551, -11.7015



65.3248, -5.9233, -20.8657



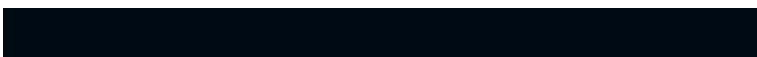
44.3785, 7.3331, -22.0192



28.0577, -1.9103, -0.5336



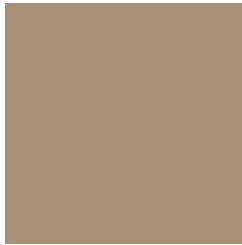
25.7663, 7.4858, -48.3653



5.1427, -0.8041, -4.6922

Previews

White Background



This preview shows how the HunterLab color 54.3869, 1.2877, 14.8508 looks on a white background.

Color Contrast Check

Large Text (above 18pt) WCAG AA ✓ Pass

Any Text WCAG AA × Fail

Large Text (above 18pt) WCAG AAA × Fail

Any Text WCAG AAA × Fail

Black Background



This preview shows how the HunterLab color 54.3869, 1.2877, 14.8508 looks on a black background.

Color Contrast Check

Large Text (above 18pt) WCAG AA ✓ Pass

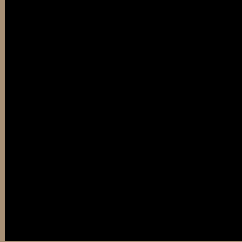
Any Text WCAG AA ✓ Pass

Large Text (above 18pt) WCAG AAA ✓ Pass

Any Text WCAG AAA × Fail

If you want to check with other color combinations, try the [Color Contrast Checker](#).

HunterLab 54.3869, 1.2877, 14.8508 Background



This preview shows how black text looks on a background with the HunterLab color 54.3869, 1.2877, 14.8508.



This preview shows how white text looks on a background with the HunterLab color 54.3869, 1.2877,

Color Blindness Simulation

Color vision deficiency is a very complex topic, and I could not describe the different causes any better than Wikipedia does, so if you want to learn more, you should check out their [article about color blindness](#).

Dichromacy



Original Color

54.3869, 1.2877, 14.8508

Protanopia

54.5014, -4.0509, 14.1820

Deuteranopia

54.3491, 3.9988, 14.8620



Tritanopia

54.5242, 9.0044, 2.3789

Trichromacy



Original Color

54.3869, 1.2877, 14.8508

Protanomaly

54.5678, -2.3916, 14.6194

Deuteranomaly

54.4159, 2.8106, 14.9052

Tritanomaly

54.3532, 6.3827, 7.3752

Monochromacy



Original Color

54.3869, 1.2877, 14.8508

Achromatopsia

54.4186, -2.9036, 2.9567

Achromatomaly

54.4446, -1.9484, 7.7412

CSS Examples

Text

The CSS property to change the color of the text to HunterLab 54.3869, 1.2877, 14.8508 is called "color". The color property can be set on classes, ids or directly on the HTML element.

This example shows how text in the color `rgb(168, 144, 118)` looks like.

```
.text, #text, p{  
    color:rgb(168, 144, 118)  
}
```

If you want to add a text shadow in that color use the text-shadow property, you can generate a text shadow directly with our [CSS Text Shadow Generator](#).

Here you see how black text with a 4 pixel rgb(168, 144, 118) colored shadow looks like.

```
.shadow{ text-shadow: 4px 4px 2px rgb(168, 144, 118) }
```

Border

The CSS property to change the border of an element to HunterLab 54.3869, 1.2877, 14.8508 is called "border". The border property can be set on classes, ids or directly on the HTML element.

This example shows the color as border, it can be applied via the CSS property "border" or "border-color".

```
.border, #border, table{ border:4px solid rgb(168, 144, 118) }
```


If only the border color should be changed use the property `border-color`.

```
.border{ border-color:rgb(168, 144, 118) }
```

If you want to add a box shadow in that color use:

Here you see how a box with a 4 pixel `rgb(168, 144, 118)` colored shadow looks like.

```
.boxshadow{ -moz-box-shadow:4px 4px 4px 4px rgb(168, 144, 118); -webkit-box-shadow:4px 4px 4px 4px rgb(168, 144, 118); box-shadow:4px 4px 4px 4px rgb(168, 144, 118) }
```

Background

The CSS property to change the background color of an element to HunterLab 54.3869, 1.2877, 14.8508 is called "background". The background property can be set on classes, ids or directly on the HTML element.

```
.background, #background, body{  
background: rgb(168, 144, 118) }
```

If only the background color should be changed can be used:

```
.background{ background-color: rgb(168,  
144, 118) }
```

This example shows the color as background, it is applied via the CSS property "background".

To optimize and compress your CSS code, you can use our [online CSS compressor and optimizer](#) based on csstidy. If you want to create a linear or radial gradient as background or border, check our [CSS Gradient Generator](#).

Hey! You found this booklet interesting? Support Converting Colors with the new Membership Option!

The pro membership hides all ads, plus gives you double the colors in the color bucket, and more awesome pro features!

[Learn more, Memberships starting at \\$2.50/m!](#)

**Follow me
on Twitter!**

@ConvertingColor