

Converting Colors

HunterLab(54.4101, 6.2162,
-0.2553)

Have a look what the booklet for
HunterLab(54.4101, 6.2162, -0.2553)
contains.

HunterLab(54.4105, 6.1500, -0.1561)	3
<i>Conversions</i>	4
<i>Details</i>	6
<i>Harmonies</i>	12
<i>Previews</i>	24
<i>Color Blindness Simulation</i>	28
<i>CSS Examples</i>	31

Color

**HunterLab(54.4105, 6.1500,
-0.1561)**

Conversions

Conversions Part 1

Format	Color
Hex	A48E9B
RGB	164, 142, 155
RGB Percent	64%, 56%, 61%
CMY	0.3569, 0.4431, 0.3922
CMYK	0.00, 0.13, 0.05, 0.36
HSL	325°, 11%, 60%
HSV	325°, 13%, 64%
XYZ	30.8992, 29.6050, 35.0961
YIQ	150.0600, 8.9390, 8.7070

Conversions

Conversions Part 2

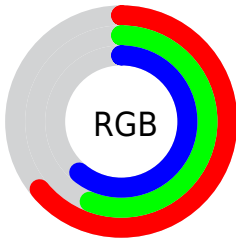
Format	Color
RYB	164, 142, 155
Decimal	10784411
CIELab	61.31, 10.56, -3.83
CIELCh	61, 11.231, 340.053
Yxy	29.6063, 0.3232, 0.3097
Android (android.graphics.Color)	4288974491 (0xFFA48E9B)
YUV	150.0600, 2.4354, 12.2254
Hunter-Lab	54.4105, 6.1500, -0.1561

Details

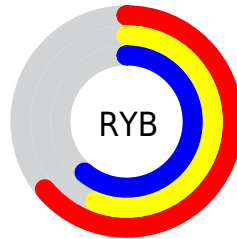
The HunterLab color $54.4105, 6.1500, -0.1561$ is a light color, and the websafe version is hex 999999 . A complement of this color would be $58.7680, -11.6690, 6.4685$, and the grayscale version is $55.2388, -2.9474, 3.0012$.

A 20% lighter version of the original color is $76.9047, 5.7522, 0.9839$, and $34.7829, 5.8844, -0.7882$ is the 20% darker color. If you saturate the color by 10%, you get $49.8603, 13.3018, -2.5027$, and if you desaturate by 10%, it is $59.2307, -0.8831, 2.4003$.

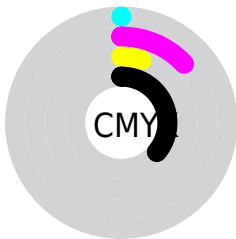
Distribution



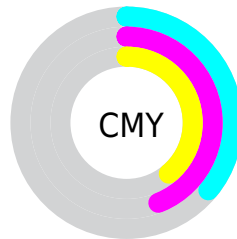
- Red (64%)
- Green (56%)
- Blue (61%)



- Red (64%)
- Yellow (56%)
- Blue (61%)



- Cyan (0%)
- Magenta (13%)
- Yellow (5%)
- Black (36%)



- Cyan (36%)
- Magenta (44%)
- Yellow (39%)

Brightness & Saturation Gradients

These gradients show how the HunterLab color 54.4105, 6.1500, -0.1561 changes by changing the brightness by 10 percent. The first figure shows a shift by +10% for each color and the second figure -10%.

Similar to the brightness gradients but the following saturation gradients show a change of the HunterLab color 54.4105, 6.1500, -0.1561 by changing the saturation by 10% instead.

■ 54.4105, 6.1500,
-0.1561

■ 54.4105, 6.1500,
-0.1561

173.2239, 3.8448,
4.9137

■ 44.2040, 6.1272,
-0.5145

■ 76.8369, 5.9893,
0.7060

■ 34.7291, 6.0267,
-0.8200

■ 88.9799, 5.8220,
1.2004

■ 26.0486, 5.8337,
-1.0647

■ 101.7027, 5.6029,
1.7337

■ 18.2433, 5.5297,
-1.2391

114.9800, 5.3357,
2.3035

■ 11.4253, 5.0863,
-1.3289

128.7896, 5.0238,
2.9080

■ 3.8126, 11.8626,
-3.9581

143.1116, 4.6698,

0.0000, NaN, NaN

3.5454

0.0000, NaN, NaN

157.9284, 4.2761,
4.2144

0.0000, NaN, NaN

■ 54.4105, 6.1500,
-0.1561

■ 54.4105, 6.1500,
-0.1561

■ 49.8603, 13.3018,
-2.5027

■ 59.2307, -0.8831,
2.4003

■ 45.6222, 20.5244,
-4.5725

■ 64.2800, -7.7753,
5.1130

■ 41.7522, 27.7057,
-6.2695

■ 69.5295, -14.5296,
7.9473

■ 38.3145, 34.6478,
-7.4724

■ 74.9549, -21.1572,
10.8778

■ 35.3783, 41.0405,
-8.0404

■ 80.5362, -27.6731,
13.8862

■ 33.0097, 46.4659,
-7.8386

■ 86.2572, -34.0933,
16.9596

■ 31.2557, 50.4700,
-6.7856

■ 91.4743, -39.6275,
19.4667

■ 30.1220, 52.7211,
-4.9124

■ 91.6517, -38.5897,
16.9112

■ 29.5868, 53.5791,
-3.4451

■ 91.8363, -37.5115,
14.2562

Harmonies

Analogous

The Analogous color harmony consists of three colors that are next to each other on the color wheel.



54.4117, 3.2313, -4.2823



54.4105, 6.1500, -0.1561



54.4117, 6.5926, 4.4890

Triad

The Triadic color harmony groups three colors that are evenly spaced from another and form a triangle on the color wheel.



54.4117, 6.1485, -0.1551



54.4117, -4.5260, 10.9991



54.4117, -9.8679, -3.0672

Complementary

The Complementary color scheme is a pair of colors which are on the opposite of each other on the color wheel.



54.4105, 6.1500, -0.1561



58.7680, -11.6690, 6.4685

Split Complementary

Split-complementary colors differ from the complementary color scheme. The scheme consists of three colors, the original color and two neighbors of the complement color.



54.4117, -11.7950, 1.3889



54.4105, 6.1500, -0.1561



54.4117, -8.7831, 9.3292

Square

The Square scheme is like the rectangle color scheme, but the four colors are evenly spaced on the color wheel.



54.4117, 6.1485, -0.1551



54.4117, 0.3147, 10.6644



54.4117, -11.4049, 5.9045



54.4117, -6.0539, -6.0630

Rectangle

The Rectangle color scheme consists of four colors that form a rectangle on the color wheel.



54.4105, 6.1500, -0.1561



54.4117, 5.4107, 7.2234



54.4117, -11.4049, 5.9045



54.4117, -10.7517, -1.6751

Sweetspot

The Sweet Spot groups the original color and five complimentary colors.



54.4117, 6.1485, -0.1551



79.3598, -0.5678, 2.9985



53.4677, 3.5821, -5.9377



36.8819, 0.0527, 1.2823



90.9709, -4.8540, 4.9426



38.3822, -2.0480, 2.0854

Same Dimension

The Same Dimension uses a secret algorithm to generate beautiful new colors.



54.4117, 6.1485, -0.1551



71.4970, 11.0524, -1.1549



54.0921, 4.4461, 4.3987



26.7449, 1.5247, 0.4190



25.9260, 46.9831, -3.2785



3.8766, 7.2353, -2.1190

Inverse Universe

The Inverse Universe completely reimagines the original color for something new.



54.4117, 6.1485, -0.1551



71.4970, 11.0524, -1.1549



59.0795, -9.9221, 2.0196



26.7449, 1.5247, 0.4190



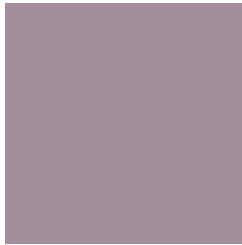
25.9260, 46.9831, -3.2785



3.8766, 7.2353, -2.1190

Previews

White Background



This preview shows how the HunterLab color 54.4105, 6.1500, -0.1561 looks on a white background.

Color Contrast Check

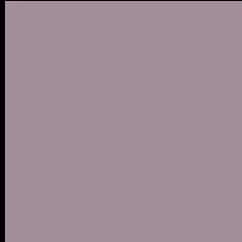
Large Text (above 18pt) WCAG AA ✓ Pass

Any Text WCAG AA × Fail

Large Text (above 18pt) WCAG AAA × Fail

Any Text WCAG AAA × Fail

Black Background



This preview shows how the HunterLab color 54.4105, 6.1500, -0.1561 looks on a black background.

Color Contrast Check

Large Text (above 18pt) WCAG AA ✓ Pass

Any Text WCAG AA ✓ Pass

Large Text (above 18pt) WCAG AAA ✓ Pass

Any Text WCAG AAA × Fail

If you want to check with other color combinations, try the [Color Contrast Checker](#).

HunterLab 54.4105, 6.1500, -0.1561 Background



This preview shows how black text looks on a background with the HunterLab color 54.4105, 6.1500, -0.1561.



This preview shows how white text looks on a background with the HunterLab color 54.4105, 6.1500, -0.1561.

-0.1561.

Color Blindness Simulation

Color vision deficiency is a very complex topic, and I could not describe the different causes any better than Wikipedia does, so if you want to learn more, you should check out their [article about color blindness](#).

Dichromacy



Original Color

54.4105, 6.1500, -0.1561

Protanopia

54.4352, -0.7638, -1.7033

Deuteranopia

54.4830, 3.5572, -0.1119



Tritanopia

54.3493, 5.8243, 0.7151

Trichromacy



Original Color

54.4105, 6.1500, -0.1561

Protanomaly

54.3646, 1.8453, -1.2567

Deuteranomaly

54.3954, 4.6874, -0.2005

Tritanomaly

54.3798, 5.9866, 0.2810

Monochromacy



Original Color

54.4105, 6.1500, -0.1561

Achromatopsia

55.2257, -2.9467, 3.0005

Achromatomaly

54.8662, 0.3450, 1.7134

CSS Examples

Text

The CSS property to change the color of the text to HunterLab 54.4105, 6.1500, -0.1561 is called "color". The color property can be set on classes, ids or directly on the HTML element.

This example shows how text in the color `rgb(164, 142, 155)` looks like.

```
.text, #text, p{  
    color:rgb(164, 142, 155)  
}
```

If you want to add a text shadow in that color use the text-shadow property, you can generate a text shadow directly with our [CSS Text Shadow Generator](#).

Here you see how black text with a 4 pixel rgb(164, 142, 155) colored shadow looks like.

```
.shadow{ text-shadow: 4px 4px 2px rgb(164, 142, 155) }
```

Border

The CSS property to change the border of an element to HunterLab 54.4105, 6.1500, -0.1561 is called "border". The border property can be set on classes, ids or directly on the HTML element.

This example shows the color as border, it can be applied via the CSS property "border" or "border-color".

```
.border, #border, table{ border:4px solid rgb(164, 142, 155) }
```


If only the border color should be changed use the property `border-color`.

```
.border{ border-color:rgb(164, 142, 155) }
```

If you want to add a box shadow in that color use:

Here you see how a box with a 4 pixel `rgb(164, 142, 155)` colored shadow looks like.

```
.boxshadow{ -moz-box-shadow:4px 4px 4px  
4px rgb(164, 142, 155); -webkit-box-  
shadow:4px 4px 4px 4px rgb(164, 142, 155);  
box-shadow:4px 4px 4px 4px rgb(164, 142,  
155) }
```

Background

The CSS property to change the background color of an element to HunterLab 54.4105, 6.1500, -0.1561 is called "background". The background property can be set on classes, ids or directly on the HTML element.

```
.background, #background, body{  
background: rgb(164, 142, 155) }
```

If only the background color should be changed can be used:

```
.background{ background-color: rgb(164,  
142, 155) }
```

This example shows the color as background, it is applied via the CSS property "background".

To optimize and compress your CSS code, you can use our [online CSS compressor and optimizer](#) based on csstidy. If you want to create a linear or radial gradient as background or border, check our [CSS Gradient Generator](#).

Hey! You found this booklet interesting? Support Converting Colors with the new Membership Option!

The pro membership hides all ads, plus gives you double the colors in the color bucket, and more awesome pro features!

[Learn more, Memberships starting at \\$2.50/m!](#)

**Follow me
on Twitter!**

@ConvertingColor