

# Converting Colors

HunterLab(54.4549, 3.5893,  
15.7183)

Have a look what the booklet for  
HunterLab(54.4549, 3.5893,  
15.7183) contains.

<b>HunterLab(54.3058, 3.7669, 15.4894)</b> .....	3
<i><b>Conversions</b></i> .....	4
<i><b>Details</b></i> .....	6
<i><b>Harmonies</b></i> .....	12
<i><b>Previews</b></i> .....	24
<i><b>Color Blindness Simulation</b></i> .....	28
<i><b>CSS Examples</b></i> .....	31

# Color

**HunterLab(54.3058, 3.7669,  
15.4894)**

# Conversions

## Conversions Part 1

<b>Format</b>	<b>Color</b>
Hex	AD8E74
RGB	173, 142, 116
RGB Percent	68%, 56%, 45%
CMY	0.3216, 0.4431, 0.5451
CMYK	0.00, 0.18, 0.33, 0.32
HSL	27°, 26%, 57%
HSV	27°, 33%, 68%
XYZ	30.0590, 29.4912, 20.6311
YIQ	148.3050, 26.8220, -1.5140

# Conversions

## Conversions Part 2

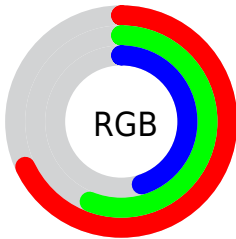
<b>Format</b>	<b>Color</b>
<b>R<sub>YB</sub></b>	173, 164, 116
Decimal	11374196
CIE <sub>Lab</sub>	61.21, 7.84, 18.25
CIE <sub>LCh</sub>	61, 19.866, 66.757
Yxy	29.4926, 0.3749, 0.3678
Android (android.graphics.Color)	4289564276 (0xFFAD8E74)
YUV	148.3050, -15.9264, 21.6575
Hunter-Lab	54.3058, 3.7669, 15.4894

# Details

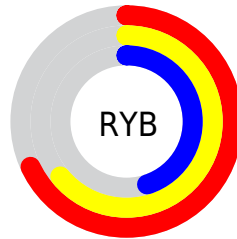
The HunterLab color  $54.3058, 3.7669, 15.4894$  is a dark color, and the websafe version is hex  $CC9999$ . A complement of this color would be  $52.5326, -6.3774, -12.3620$ , and the grayscale version is  $54.5971, -2.9132, 2.9664$ .

A 20% lighter version of the original color is  $76.7887, 3.0500, 18.7665$ , and  $34.7343, 4.0501, 12.1389$  is the 20% darker color. If you saturate the color by 10%, you get  $51.4240, 6.5193, 18.2775$ , and if you desaturate by 10%, it is  $57.3168, 1.2866, 12.2735$ .

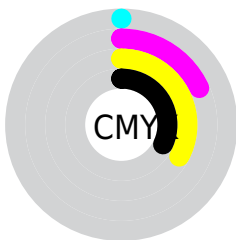
# Distribution



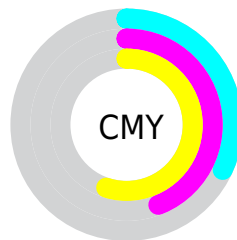
- Red (68%)
- Green (56%)
- Blue (45%)



- Red (68%)
- Yellow (64%)
- Blue (45%)



- Cyan (0%)
- Magenta (18%)
- Yellow (33%)
- Black (32%)



- Cyan (32%)
- Magenta (44%)
- Yellow (55%)

# Brightness & Saturation Gradients

These gradients show how the HunterLab color 54.3058, 3.7669, 15.4894 changes by changing the brightness by 10 percent. The first figure shows a shift by +10% for each color and the second figure -10%.

Similar to the brightness gradients but the following saturation gradients show a change of the HunterLab color 54.3058, 3.7669, 15.4894 by changing the saturation by 10% instead.



■ 54.3058, 3.7669,  
15.4894

■ 54.3058, 3.7669,  
15.4894

173.0699, 0.4422,  
29.3272

■ 44.1064, 3.8848,  
13.8476

■ 76.7195, 3.3455,  
18.6591

■ 34.6390, 3.9346,  
12.1438

■ 88.8566, 3.0572,  
20.2070

■ 25.9668, 3.9031,  
10.3505

■ 101.5738, 2.7220,  
21.7404

■ 18.1707, 3.7741,  
8.4225

114.8457, 2.3432,  
23.2640

■ 11.3632, 3.5225,  
7.5599

128.6501, 1.9237,  
24.7818

■ 3.6659, 9.1229,  
2.5661

142.9672, 1.4657,

0.0000, NaN, NaN

26.2967

0.0000, NaN, NaN

157.7791, 0.9713,  
27.8112

0.0000, NaN, NaN

■ 54.3058, 3.7669,  
15.4894

■ 54.3058, 3.7669,  
15.4894

■ 51.4240, 6.5193,  
18.2775

■ 57.3168, 1.2866,  
12.2735

■ 48.6799, 9.5620,  
20.5860

■ 60.4421, -0.9320,  
8.6740

■ 46.0879, 12.8976,  
22.3656

■ 63.6730, -2.9096,  
4.7332

■ 43.6623, 16.5186,  
23.5703

■ 67.0007, -4.6654,  
0.4884

■ 41.4172, 20.3997,  
24.1673

■ 70.4172, -6.2183,  
-4.0281

■ 39.3657, 24.4907,  
24.1521

■ 73.9157, -7.5861,  
-8.7880

■ 38.0331, 27.4204,  
23.9159

■ 77.4901, -8.7856,  
-13.7671

■ 81.1347, -9.8320,  
-18.9442

■ 84.1806, -14.4422,  
-15.0151

# Harmonies

## Analogous

The Analogous color harmony consists of three colors that are next to each other on the color wheel.



54.3071, 10.9601, 11.5345



54.3058, 3.7669, 15.4894



54.3071, -4.8282, 16.3463

# Triad

The Triadic color harmony groups three colors that are evenly spaced from another and form a triangle on the color wheel.



54.3071, 3.7649, 15.4901



54.3071, -18.3328, 1.0768



54.3071, 7.3295, -11.1815

# Complementary

The Complementary color scheme is a pair of colors which are on the opposite of each other on the color wheel.



54.3058, 3.7669, 15.4894



52.5326, -6.3774, -12.3620

# Split Complementary

Split-complementary colors differ from the complementary color scheme. The scheme consists of three colors, the original color and two neighbors of the complement color.



54.3071, -0.9457, -15.0534



54.3058, 3.7669, 15.4894



54.3071, -15.4970, -7.2997

# Square

The Square scheme is like the rectangle color scheme, but the four colors are evenly spaced on the color wheel.



54.3071, 3.7649, 15.4901



54.3071, -17.2441, 8.7922



54.3071, -9.2594, -13.5326



54.3071, 13.1057, -3.6095



# Rectangle

The Rectangle color scheme consists of four colors that form a rectangle on the color wheel.



54.3058, 3.7669, 15.4894



54.3071, -10.1306, 15.1859



54.3071, -9.2594, -13.5326



54.3071, 4.7286, -13.0084

# Sweetspot

The Sweet Spot groups the original color and five complimentary colors.



54.3071, 3.7649, 15.4901



82.0727, -2.0122, 10.1895



48.4695, 21.1420, -3.7060



37.9896, -0.7650, 5.0757



93.2148, -4.9737, 5.0645



40.3295, -2.1519, 2.1912



# Same Dimension

The Same Dimension uses a secret algorithm to generate beautiful new colors.



54.3071, 3.7649, 15.4901



69.6708, 7.8627, 23.6750



62.4107, -9.7195, 22.5898



29.3167, -0.7990, 3.4625



32.7695, 23.0882, 20.5966



6.3947, 1.8137, 3.9722



# Inverse Universe

The Inverse Universe completely reimagines the original color for something new.



52.5326, -6.3774, -12.3620



66.7667, -8.6474, -21.8868



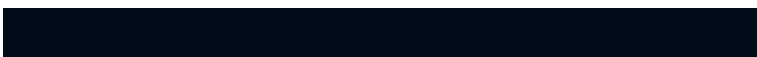
44.5965, 7.3089, -24.9529



29.0718, -2.2093, -0.3832



28.6759, 3.0051, -42.3296

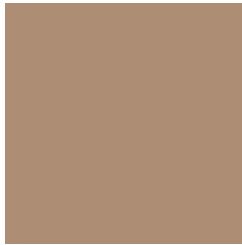


5.8000, -1.1781, -4.7063



# Previews

## White Background



This preview shows how the HunterLab color 54.3058, 3.7669, 15.4894 looks on a white background.

## Color Contrast Check

Large Text (above 18pt) WCAG AA ✓ Pass

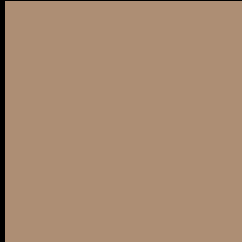
Any Text WCAG AA × Fail

Large Text (above 18pt) WCAG AAA × Fail

Any Text WCAG AAA × Fail



# Black Background



This preview shows how the HunterLab color 54.3058, 3.7669, 15.4894 looks on a black background.

## Color Contrast Check

Large Text (above 18pt) WCAG AA ✓ Pass

Any Text WCAG AA ✓ Pass

Large Text (above 18pt) WCAG AAA ✓ Pass

Any Text WCAG AAA × Fail

If you want to check with other color combinations, try the [Color Contrast Checker](#).

# HunterLab 54.3058, 3.7669, 15.4894 Background



This preview shows how black text looks on a background with the HunterLab color 54.3058, 3.7669, 15.4894.



This preview shows how white text looks on a background with the HunterLab color 54.3058, 3.7669,

15.4894.

# Color Blindness Simulation

Color vision deficiency is a very complex topic, and I could not describe the different causes any better than Wikipedia does, so if you want to learn more, you should check out their [article about color blindness](#).

## Dichromacy



### Original Color

54.3058, 3.7669, 15.4894

### Protanopia

54.4792, -4.1728, 14.5028

### Deuteranopia

54.3058, 3.7669, 15.4894



## Tritanopia

54.3555, 11.0748, 3.1271

# Trichromacy



## Original Color

54.3058, 3.7669, 15.4894

## Protanomaly

54.4539, -1.3693, 14.8686

## Deuteranomaly

54.3058, 3.7669, 15.4894

## Tritanomaly

54.1819, 8.4819, 8.0466

# Monochromacy



## Original Color

54.3058, 3.7669, 15.4894

## Achromatopsia

54.4186, -2.9036, 2.9567

## Achromatomaly

54.3171, -0.9776, 8.0277

# CSS Examples

## Text

The CSS property to change the color of the text to HunterLab 54.3058, 3.7669, 15.4894 is called "color". The color property can be set on classes, ids or directly on the HTML element.

This example shows how text in the color `rgb(173, 142, 116)` looks like.

```
.text, #text, p{  
    color:rgb(173, 142, 116)  
}
```

If you want to add a text shadow in that color use the text-shadow property, you can generate a text shadow directly with our [CSS Text Shadow Generator](#).

Here you see how black text with a 4 pixel rgb(173, 142, 116) colored shadow looks like.

```
.shadow{ text-shadow: 4px 4px 2px rgb(173, 142, 116) }
```

## Border

The CSS property to change the border of an element to HunterLab 54.3058, 3.7669, 15.4894 is called "border". The border property can be set on classes, ids or directly on the HTML element.

This example shows the color as border, it can be applied via the CSS property "border" or "border-color".

```
.border, #border, table{ border:4px solid rgb(173, 142, 116) }
```



If only the border color should be changed use the property `border-color`.

```
.border{ border-color:rgb(173, 142, 116) }
```

If you want to add a box shadow in that color use:

Here you see how a box with a 4 pixel `rgb(173, 142, 116)` colored shadow looks like.

```
.boxshadow{ -moz-box-shadow:4px 4px 4px  
4px rgb(173, 142, 116); -webkit-box-  
shadow:4px 4px 4px 4px rgb(173, 142, 116);  
box-shadow:4px 4px 4px 4px rgb(173, 142,  
116) }
```

# Background

The CSS property to change the background color of an element to HunterLab 54.3058, 3.7669, 15.4894 is called "background". The background property can be set on classes, ids or directly on the HTML element.

```
.background, #background, body{  
background: rgb(173, 142, 116) }
```

If only the background color should be changed can be used:

```
.background{ background-color: rgb(173,  
142, 116) }
```

This example shows the color as background, it is applied via the CSS property "background".

To optimize and compress your CSS code, you can use our [online CSS compressor and optimizer](#) based on csstidy. If you want to create a linear or radial gradient as background or border, check our [CSS Gradient Generator](#).

Hey! You found this booklet interesting? Support Converting Colors with the new Membership Option!

The pro membership hides all ads, plus gives you double the colors in the color bucket, and more awesome pro features!

**[Learn more, Memberships starting at \\$2.50/m!](#)**

**Follow me  
on Twitter!**

@ConvertingColor