

Converting Colors

HunterLab(54.4800, 81.0585,
12.8582)

Have a look what the booklet for
HunterLab(54.4800, 81.0585,
12.8582) contains.

HunterLab(51.0394, 74.1871, 9.0257)	3
<i>Conversions</i>	4
<i>Details</i>	6
<i>Harmonies</i>	12
<i>Previews</i>	24
<i>Color Blindness Simulation</i>	28
<i>CSS Examples</i>	31

Color

**HunterLab(51.0394, 74.1871,
9.0257)**

Conversions

Conversions Part 1

Format	Color
Hex	FF3C80
RGB	255, 60, 128
RGB Percent	100%, 24%, 50%
CMY	0.0000, 0.7646, 0.4980
CMYK	0.00, 0.76, 0.50, 0.00
HSL	339°, 100%, 62%
HSV	339°, 76%, 100%
XYZ	46.7521, 26.0502, 22.9861
YIQ	126.0570, 94.3920, 62.4880

Conversions

Conversions Part 2

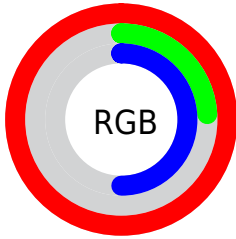
Format	Color
R_{YB}	255, 60, 128
Decimal	16727168
CIE _{Lab}	58.09, 75.36, 8.65
CIE _{LCh}	58, 75.851, 6.546
Yxy	26.0517, 0.4881, 0.2720
Android (android.graphics.Color)	4294917248 (0xFFFF3C80)
YUV	126.0570, 0.9579, 113.0830
Hunter-Lab	51.0394, 74.1871, 9.0257

Details

The HunterLab color **51.0394, 74.1871, 9.0257** is a dark color, and the websafe version is hex **FF0066**. The color can be described as middle washed rose. A complement of this color would be **87.2177, -57.2688, 20.7757**, and the grayscale version is **45.6723, -2.4370, 2.4815**.

A 20% lighter version of the original color is **62.4592, 52.9893, -2.0832**, and **34.3089, 60.4003, 9.4152** is the 20% darker color. If you saturate the color by 10%, you get **48.5695, 79.3469, 12.8207**, and if you desaturate by 10%, it is **54.6540, 66.3812, 5.9503**.

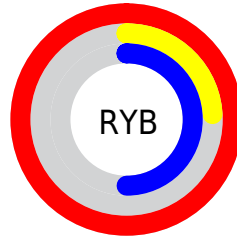
Distribution



Red (100%)

Green (24%)

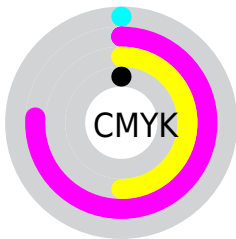
Blue (50%)



Red (100%)

Yellow (24%)

Blue (50%)

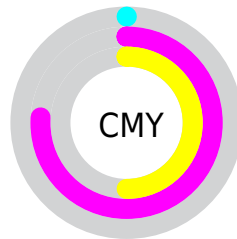


Cyan (0%)

Magenta (76%)

Yellow (50%)

Black (0%)



Cyan (0%)

Magenta (76%)

Yellow (50%)

Brightness & Saturation Gradients

These gradients show how the HunterLab color 51.0394, 74.1871, 9.0257 changes by changing the brightness by 10 percent. The first figure shows a shift by +10% for each color and the second figure -10%.

Similar to the brightness gradients but the following saturation gradients show a change of the HunterLab color 51.0394, 74.1871, 9.0257 by changing the saturation by 10% instead.

51.0394, 74.1871,
9.0257

51.0394, 74.1871,
9.0257

168.2367, 92.3140,
18.8147

41.0638, 71.7921,
7.9844

73.0468, 78.8156,
11.1221

31.8377, 69.4347,
6.9366

84.9967, 81.0120,
12.1820

23.4296, 67.2711,
5.8722

97.5354, 83.1178,
13.2531

15.9286, 65.7054,
4.7708

110.6363, 85.1320,
14.3369

9.4616, 65.9593,
4.3034

124.2764, 87.0559,
15.4343

0.0000, INF, NaN

0.0000, INF, NaN

138.4351, 88.8921,

16.5461

0.0000, NaN, NaN

153.0940, 90.6437,
17.6728

0.0000, NaN, NaN

■ 51.0394, 74.1871,
9.0257

■ 51.0394, 74.1871,
9.0257

■ 48.5695, 79.3469,
12.8207

■ 54.6540, 66.3812,
5.9503

■ 47.1995, 81.5070,
16.9762

■ 59.3405, 56.7192,
3.7679

■ 46.8825, 81.8230,
18.3935

■ 64.9777, 45.9921,
2.4945

■ 71.4285, 34.8096,
2.0446

■ 78.5650, 23.5575,
2.2934

■ 86.2774, 12.4443,
3.1150

■ 94.4757, 1.5624,
4.3994

100.0000, -5.3359,
5.4331

Harmonies

Analogous

The Analogous color harmony consists of three colors that are next to each other on the color wheel.



51.0409, 67.1127, -26.5421



51.0394, 74.1871, 9.0257



51.0409, 56.9092, 26.8290

Triad

The Triadic color harmony groups three colors that are evenly spaced from another and form a triangle on the color wheel.



51.0409, 74.1822, 9.0270



51.0409, -34.5180, 31.0166



51.0409, -25.0376, -85.7328

Complementary

The Complementary color scheme is a pair of colors which are on the opposite of each other on the color wheel.



51.0394, 74.1871, 9.0257



87.2177, -57.2688, 20.7757

Split Complementary

Split-complementary colors differ from the complementary color scheme. The scheme consists of three colors, the original color and two neighbors of the complement color.



51.0409, -43.4417, -45.9912



51.0394, 74.1871, 9.0257



51.0409, -47.8950, 21.0548

Square

The Square scheme is like the rectangle color scheme, but the four colors are evenly spaced on the color wheel.



51.0409, 74.1822, 9.0270



51.0409, -9.5716, 33.4568



51.0409, -50.7016, -4.3764



51.0409, 4.5003, -96.7077

Rectangle

The Rectangle color scheme consists of four colors that form a rectangle on the color wheel.



51.0394, 74.1871, 9.0257



51.0409, 35.9394, 31.4960



51.0409, -50.7016, -4.3764



51.0409, -32.4832, -74.4670

Sweetspot

The Sweet Spot groups the original color and five complimentary colors.



51.0409, 74.1822, 9.0270



81.1771, 19.6848, 2.5192



45.8117, 76.0750, -92.8810



36.2970, 10.9755, 1.0573

0.0000, NaN, NaN



46.2646, -2.4686, 2.5136

Same Dimension

The Same Dimension uses a secret algorithm to generate beautiful new colors.



51.0409, 74.1822, 9.0270



47.6842, 80.9074, 15.1051



53.6422, 58.0317, 29.3427



42.5343, 2.2407, 1.8347



33.9268, 59.2839, 12.7502



10.6791, 18.8390, 2.6317

Inverse Universe

The Inverse Universe completely reimagines the original color for something new.



51.0409, 74.1822, 9.0270



47.6842, 80.9074, 15.1051



79.0183, -32.0128, -22.8567



42.5343, 2.2407, 1.8347



33.9268, 59.2839, 12.7502



10.6791, 18.8390, 2.6317

Previews

White Background



This preview shows how the HunterLab color 51.0394, 74.1871, 9.0257 looks on a white background.

Color Contrast Check

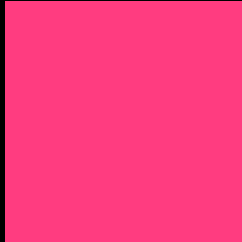
Large Text (above 18pt) WCAG AA ✓ Pass

Any Text WCAG AA × Fail

Large Text (above 18pt) WCAG AAA × Fail

Any Text WCAG AAA × Fail

Black Background



This preview shows how the HunterLab color 51.0394, 74.1871, 9.0257 looks on a black background.

Color Contrast Check

Large Text (above 18pt) WCAG AA ✓ Pass

Any Text WCAG AA ✓ Pass

Large Text (above 18pt) WCAG AAA ✓ Pass

Any Text WCAG AAA × Fail

If you want to check with other color combinations, try the [Color Contrast Checker](#).

HunterLab 51.0394, 74.1871, 9.0257 Background



This preview shows how black text looks on a background with the HunterLab color 51.0394, 74.1871, 9.0257.



This preview shows how white text looks on a background with the HunterLab color 51.0394, 74.1871, 9.0257.

Color Blindness Simulation

Color vision deficiency is a very complex topic, and I could not describe the different causes any better than Wikipedia does, so if you want to learn more, you should check out their [article about color blindness](#).

Dichromacy



Original Color

51.0394, 74.1871, 9.0257

Protanopia

51.3732, 1.3259, -12.7863

Deuteranopia

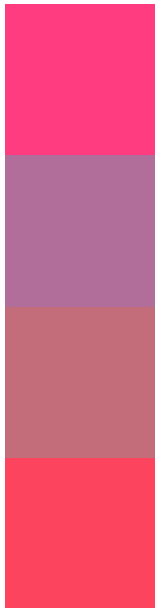
51.2220, 3.3776, 11.4201



Tritanopia

50.9729, 64.2909, 24.5816

Trichromacy



Original Color

51.0394, 74.1871, 9.0257

Protanomaly

47.8179, 26.9016, -8.5140

Deuteranomaly

48.7159, 29.7308, 8.1301

Tritanomaly

50.8361, 67.7829, 19.8848

Monochromacy



Original Color

51.0394, 74.1871, 9.0257

Achromatopsia

45.6768, -2.4372, 2.4817

Achromatomaly

44.6310, 25.1446, 1.2682

CSS Examples

Text

The CSS property to change the color of the text to HunterLab 51.0394, 74.1871, 9.0257 is called "color". The color property can be set on classes, ids or directly on the HTML element.

This example shows how text in the color `rgb(255, 60, 128)` looks like.

```
.text, #text, p{  
    color:rgb(255, 60, 128)  
}
```

If you want to add a text shadow in that color use the text-shadow property, you can generate a text shadow directly with our [CSS Text Shadow Generator](#).

Here you see how black text with a 4 pixel rgb(255, 60, 128) colored shadow looks like.

```
.shadow{ text-shadow: 4px 4px 2px rgb(255, 60, 128) }
```

Border

The CSS property to change the border of an element to HunterLab 51.0394, 74.1871, 9.0257 is called "border". The border property can be set on classes, ids or directly on the HTML element.

This example shows the color as border, it can be applied via the CSS property "border" or "border-color".

```
.border, #border, table{ border:4px solid rgb(255, 60, 128) }
```


If only the border color should be changed use the property `border-color`.

```
.border{ border-color:rgb(255, 60, 128) }
```

If you want to add a box shadow in that color use:

Here you see how a box with a 4 pixel `rgb(255, 60, 128)` colored shadow looks like.

```
.boxshadow{ -moz-box-shadow:4px 4px 4px  
4px rgb(255, 60, 128); -webkit-box-  
shadow:4px 4px 4px 4px rgb(255, 60, 128);  
box-shadow:4px 4px 4px 4px rgb(255, 60,  
128) }
```

Background

The CSS property to change the background color of an element to HunterLab 51.0394, 74.1871, 9.0257 is called "background". The background property can be set on classes, ids or directly on the HTML element.

```
.background, #background, body{  
background: rgb(255, 60, 128) }
```

If only the background color should be changed can be used:

```
.background{ background-color: rgb(255, 60,  
128) }
```

This example shows the color as background, it is applied via the CSS property "background".

To optimize and compress your CSS code, you can use our [online CSS compressor and optimizer](#) based on csstidy. If you want to create a linear or radial gradient as background or border, check our [CSS Gradient Generator](#).

Hey! You found this booklet interesting? Support Converting Colors with the new Membership Option!

The pro membership hides all ads, plus gives you double the colors in the color bucket, and more awesome pro features!

[Learn more, Memberships starting at \\$2.50/m!](#)

**Follow me
on Twitter!**

@ConvertingColor