

Converting Colors

HunterLab(54.4866, 3.1464,
13.0774)

Have a look what the booklet for
HunterLab(54.4866, 3.1464,
13.0774) contains.

HunterLab(54.4252, 3.0664, 13.1764)	3
<i>Conversions</i>	4
<i>Details</i>	6
<i>Harmonies</i>	12
<i>Previews</i>	24
<i>Color Blindness Simulation</i>	28
<i>CSS Examples</i>	31

Color

**HunterLab(54.4252, 3.0664,
13.1764)**

Conversions

Conversions Part 1

Format	Color
Hex	AA8F7B
RGB	170, 143, 123
RGB Percent	67%, 56%, 48%
CMY	0.3333, 0.4392, 0.5176
CMYK	0.00, 0.16, 0.28, 0.33
HSL	26°, 22%, 57%
HSV	26°, 28%, 67%
XYZ	29.9752, 29.6210, 22.8764
YIQ	148.7930, 22.5120, -0.4960

Conversions

Conversions Part 2

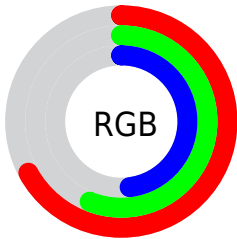
Format	Color
R_{YB}	170, 158, 123
Decimal	11177851
CIE _{Lab}	61.33, 7.04, 14.42
CIE _{LCh}	61, 16.048, 63.999
Yxy	29.6224, 0.3635, 0.3592
Android (android.graphics.Color)	4289367931 (0xFFAA8F7B)
YUV	148.7930, -12.7159, 18.5985
Hunter-Lab	54.4252, 3.0664, 13.1764

Details

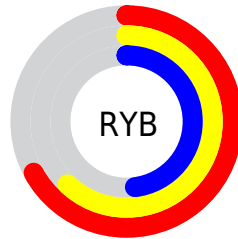
The HunterLab color $54.4252, 3.0664, 13.1764$ is a dark color, and the websafe version is hex $CC9999$. A complement of this color would be $53.7820, -6.7301, -8.9027$, and the grayscale version is $54.7826, -2.9231, 2.9764$.

A 20% lighter version of the original color is $76.9648, 2.5335, 15.8281$, and $34.7923, 3.1749, 10.4542$ is the 20% darker color. If you saturate the color by 10%, you get $51.4076, 5.8691, 16.0531$, and if you desaturate by 10%, it is $57.5730, 0.5216, 9.9340$.

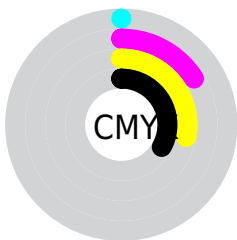
Distribution



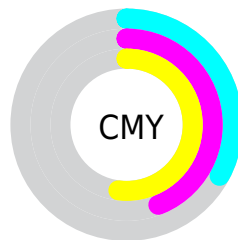
- Red (67%)
- Green (56%)
- Blue (48%)



- Red (67%)
- Yellow (62%)
- Blue (48%)



- Cyan (0%)
- Magenta (16%)
- Yellow (28%)
- Black (33%)



- Cyan (33%)
- Magenta (44%)
- Yellow (52%)

Brightness & Saturation Gradients

These gradients show how the HunterLab color 54.4252, 3.0664, 13.1764 changes by changing the brightness by 10 percent. The first figure shows a shift by +10% for each color and the second figure -10%.

Similar to the brightness gradients but the following saturation gradients show a change of the HunterLab color 54.4252, 3.0664, 13.1764 by changing the saturation by 10% instead.

■ 54.4252, 3.0664,
13.1764

■ 54.4252, 3.0664,
13.1764

173.2456, -0.5677,
25.3808

■ 44.2178, 3.2276,
11.7804

■ 76.8534, 2.5657,
15.9090

■ 34.7418, 3.3237,
10.3469

■ 88.9973, 2.2405,
17.2594

■ 26.0601, 3.3421,
8.8560

■ 101.7209, 1.8701,
18.6062

■ 18.2536, 3.2678,
7.2736

114.9990, 1.4575,
19.9527

■ 11.4341, 3.0770,
6.1530

128.8092, 1.0053,
21.3017

■ 3.8329, 7.7935,
2.6830

143.1320, 0.5158,

0.0000, NaN, NaN

22.6550

0.0000, NaN, NaN

157.9494, -0.0091,
24.0143

0.0000, NaN, NaN

■ 54.4252, 3.0664,
13.1764

■ 54.4252, 3.0664,
13.1764

■ 51.4076, 5.8691,
16.0531

■ 57.5730, 0.5216,
9.9340

■ 48.5298, 8.9498,
18.5135

■ 60.8355, -1.7774,
6.3670

■ 45.8076, 12.3142,
20.5064

■ 64.2035, -3.8521,
2.5141

■ 43.2569, 15.9587,
21.9798

■ 67.6679, -5.7216,
-1.5918

■ 40.8946, 19.8627,
22.8881

■ 71.2207, -7.4049,
-5.9224

■ 38.7372, 23.9812,
23.2035

■ 74.8548, -8.9193,
-10.4539

■ 36.7965, 28.2216,
22.9828

■ 78.5641, -10.2808,
-15.1656

■ 36.3684, 29.2062,
22.9214

■ 82.1847, -12.3859,
-17.8272

■ 85.3548, -17.2615,
-13.4244

Harmonies

Analogous

The Analogous color harmony consists of three colors that are next to each other on the color wheel.



54.4264, 8.5981, 9.5906



54.4252, 3.0664, 13.1764



54.4264, -3.8340, 14.1607

Triad

The Triadic color harmony groups three colors that are evenly spaced from another and form a triangle on the color wheel.



54.4264, 3.0645, 13.1772



54.4264, -15.5837, 2.0703



54.4264, 4.7540, -8.6411

Complementary

The Complementary color scheme is a pair of colors which are on the opposite of each other on the color wheel.



54.4252, 3.0664, 13.1764



53.7820, -6.7301, -8.9027

Split Complementary

Split-complementary colors differ from the complementary color scheme. The scheme consists of three colors, the original color and two neighbors of the complement color.



54.4264, -1.9737, -11.2753



54.4252, 3.0664, 13.1764



54.4264, -13.5293, -4.6206

Square

The Square scheme is like the rectangle color scheme, but the four colors are evenly spaced on the color wheel.



54.4264, 3.0645, 13.1772



54.4264, -14.3837, 8.2365



54.4264, -8.6316, -9.7195



54.4264, 9.6073, -2.8984

Rectangle

The Rectangle color scheme consists of four colors that form a rectangle on the color wheel.



54.4252, 3.0664, 13.1764



54.4264, -8.2263, 13.3259



54.4264, -8.6316, -9.7195



54.4264, 2.6248, -9.9500

Sweetspot

The Sweet Spot groups the original color and five complimentary colors.



54.4264, 3.0645, 13.1772



81.7224, -2.2472, 8.8253



49.9277, 17.0194, -3.4112



38.2816, -0.8534, 4.5134



93.2148, -4.9737, 5.0645



40.3295, -2.1519, 2.1912

Same Dimension

The Same Dimension uses a secret algorithm to generate beautiful new colors.



54.4264, 3.0645, 13.1772



70.8700, 6.3325, 20.1189



61.0566, -8.0215, 19.2853



28.3683, -0.6672, 3.2791



31.3620, 24.6238, 19.7562



5.8432, 1.7168, 3.6306

Inverse Universe

The Inverse Universe completely reimagines the original color for something new.



53.7820, -6.7301, -8.9027



69.8202, -9.5507, -15.7395



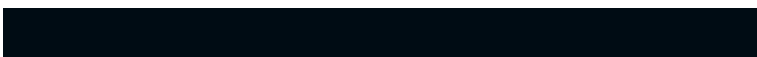
47.1920, 4.4212, -18.6229



28.2649, -2.2504, -0.2815



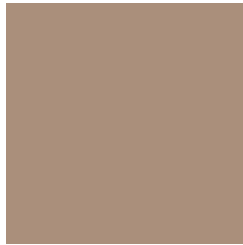
29.3675, 0.7705, -38.3701



5.5506, -1.4188, -3.8751

Previews

White Background



This preview shows how the HunterLab color 54.4252, 3.0664, 13.1764 looks on a white background.

Color Contrast Check

Large Text (above 18pt) WCAG AA ✓ Pass

Any Text WCAG AA × Fail

Large Text (above 18pt) WCAG AAA × Fail

Any Text WCAG AAA × Fail

Black Background



This preview shows how the HunterLab color 54.4252, 3.0664, 13.1764 looks on a black background.

Color Contrast Check

Large Text (above 18pt) WCAG AA ✓ Pass

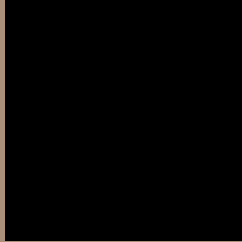
Any Text WCAG AA ✓ Pass

Large Text (above 18pt) WCAG AAA ✓ Pass

Any Text WCAG AAA × Fail

If you want to check with other color combinations, try the [Color Contrast Checker](#).

HunterLab 54.4252, 3.0664, 13.1764 Background



This preview shows how black text looks on a background with the HunterLab color 54.4252, 3.0664, 13.1764.



This preview shows how white text looks on a background with the HunterLab color 54.4252, 3.0664,

Color Blindness Simulation

Color vision deficiency is a very complex topic, and I could not describe the different causes any better than Wikipedia does, so if you want to learn more, you should check out their [article about color blindness](#).

Dichromacy



Original Color

54.4252, 3.0664, 13.1764

Protanopia

54.5238, -3.7440, 12.4337

Deuteranopia

54.2531, 3.9017, 13.0202



Tritanopia

54.3613, 9.8481, 2.1993

Trichromacy



Original Color

54.4252, 3.0664, 13.1764

Protanomaly

54.3968, -1.2960, 12.7122

Deuteranomaly

54.2531, 3.9017, 13.0202

Tritanomaly

54.2405, 7.5084, 6.4334

Monochromacy



Original Color

54.4252, 3.0664, 13.1764

Achromatopsia

54.8219, -2.9252, 2.9786

Achromatomaly

54.7074, -0.8815, 6.8058

CSS Examples

Text

The CSS property to change the color of the text to HunterLab 54.4252, 3.0664, 13.1764 is called "color". The color property can be set on classes, ids or directly on the HTML element.

This example shows how text in the color `rgb(170, 143, 123)` looks like.

```
.text, #text, p{  
    color:rgb(170, 143, 123)  
}
```

If you want to add a text shadow in that color use the text-shadow property, you can generate a text shadow directly with our [CSS Text Shadow Generator](#).

Here you see how black text with a 4 pixel rgb(170, 143, 123) colored shadow looks like.

```
.shadow{ text-shadow: 4px 4px 2px rgb(170, 143, 123) }
```

Border

The CSS property to change the border of an element to HunterLab 54.4252, 3.0664, 13.1764 is called "border". The border property can be set on classes, ids or directly on the HTML element.

This example shows the color as border, it can be applied via the CSS property "border" or "border-color".

```
.border, #border, table{ border:4px solid rgb(170, 143, 123) }
```


If only the border color should be changed use the property `border-color`.

```
.border{ border-color:rgb(170, 143, 123) }
```

If you want to add a box shadow in that color use:

Here you see how a box with a 4 pixel `rgb(170, 143, 123)` colored shadow looks like.

```
.boxshadow{ -moz-box-shadow:4px 4px 4px  
4px rgb(170, 143, 123); -webkit-box-  
shadow:4px 4px 4px 4px rgb(170, 143, 123);  
box-shadow:4px 4px 4px 4px rgb(170, 143,  
123) }
```

Background

The CSS property to change the background color of an element to HunterLab 54.4252, 3.0664, 13.1764 is called "background". The background property can be set on classes, ids or directly on the HTML element.

```
.background, #background, body{  
background: rgb(170, 143, 123) }
```

If only the background color should be changed can be used:

```
.background{ background-color: rgb(170,  
143, 123) }
```

This example shows the color as background, it is applied via the CSS property "background".

To optimize and compress your CSS code, you can use our [online CSS compressor and optimizer](#) based on csstidy. If you want to create a linear or radial gradient as background or border, check our [CSS Gradient Generator](#).

Hey! You found this booklet interesting? Support Converting Colors with the new Membership Option!

The pro membership hides all ads, plus gives you double the colors in the color bucket, and more awesome pro features!

[Learn more, Memberships starting at \\$2.50/m!](#)

**Follow me
on Twitter!**

@ConvertingColor