

Converting Colors

HunterLab(54.6391, 15.4248,
7.8469)

Have a look what the booklet for
HunterLab(54.6391, 15.4248,
7.8469) contains.

HunterLab(54.6391, 15.4248, 7.8469)	3
<i>Conversions</i>	4
<i>Details</i>	6
<i>Harmonies</i>	12
<i>Previews</i>	24
<i>Color Blindness Simulation</i>	28
<i>CSS Examples</i>	31

Color

**HunterLab(54.6391, 15.4248,
7.8469)**

Conversions

Conversions Part 1

Format	Color
Hex	BC878A
RGB	188, 135, 138
RGB Percent	74%, 53%, 54%
CMY	0.2627, 0.4706, 0.4588
CMYK	0.00, 0.28, 0.27, 0.26
HSL	357°, 28%, 63%
HSV	357°, 28%, 74%
XYZ	33.9905, 29.8543, 28.0158
YIQ	151.1890, 30.6250, 12.1690

Conversions

Conversions Part 2

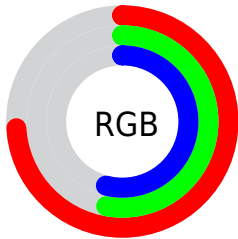
Format	Color
R _Y B	188, 135, 138
Decimal	12355466
CIE Lab	61.53, 20.73, 6.46
CIE LCh	62, 21.711, 17.320
Yxy	29.8557, 0.3700, 0.3250
Android (android.graphics.Color)	4290545546 (0xFFBC878A)
YUV	151.1890, -6.5022, 32.2832
Hunter-Lab	54.6391, 15.4248, 7.8469

Details

The HunterLab color **54.6391, 15.4248, 7.8469** is a light color, and the websafe version is hex **CC9999**. A complement of this color would be **66.7988, -18.7396, 0.0916**, and the grayscale version is **55.7242, -2.9733, 3.0276**.

A 20% lighter version of the original color is **77.1811, 15.8574, 9.9719**, and **34.9115, 13.9771, 6.0775** is the 20% darker color. If you saturate the color by 10%, you get **49.5903, 22.6934, 9.6091**, and if you desaturate by 10%, it is **60.1080, 8.3741, 6.2749**.

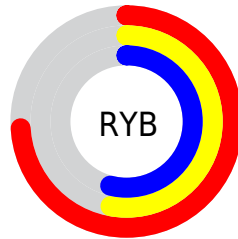
Distribution



Red (74%)

Green (53%)

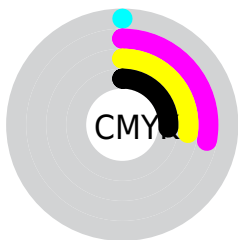
Blue (54%)



Red (74%)

Yellow (53%)

Blue (54%)

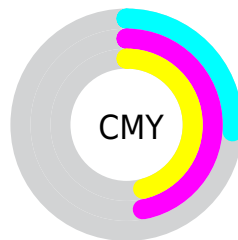


Cyan (0%)

Magenta (28%)

Yellow (27%)

Black (26%)



Cyan (26%)

Magenta (47%)

Yellow (46%)

Brightness & Saturation Gradients

These gradients show how the HunterLab color 54.6391, 15.4248, 7.8469 changes by changing the brightness by 10 percent. The first figure shows a shift by +10% for each color and the second figure -10%.

Similar to the brightness gradients but the following saturation gradients show a change of the HunterLab color 54.6391, 15.4248, 7.8469 by changing the saturation by 10% instead.

■ 54.6391, 15.4248,
7.8469

■ 54.6391, 15.4248,
7.8469

173.5602, 16.8205,
16.8023

■ 44.4174, 14.8994,
6.9332

■ 77.0934, 16.1983,
9.7179

■ 34.9260, 14.2697,
6.0280

■ 89.2493, 16.4691,
10.6767

■ 26.2276, 13.5172,
5.1265

■ 101.9843, 16.6713,
11.6528

■ 18.4023, 12.6215,
4.2181

115.2734, 16.8104,
12.6465

■ 11.5614, 11.5609,
3.2834

129.0943, 16.8912,
13.6582

■ 4.1149, 21.7287,
2.8805

143.4272, 16.9176,

0.0000, NaN, NaN

14.6880

0.0000, NaN, NaN

158.2545, 16.8930,
15.7361

0.0000, NaN, NaN

■ 54.6391, 15.4248,
7.8469

■ 54.6391, 15.4248,
7.8469

■ 49.5903, 22.6934,
9.6091

■ 60.1080, 8.3741,
6.2749

■ 45.0395, 30.0726,
11.5511

■ 65.9263, 1.5849,
4.8785

■ 41.0841, 37.3211,
13.6295

■ 72.0422, -4.9491,
3.6392

■ 37.8267, 44.0341,
15.7433

■ 78.4135, -11.2510,
2.5355

■ 35.3582, 49.6574,
17.7257

■ 85.0068, -17.3508,
1.5475

■ 33.7270, 53.6285,
19.3715

■ 91.7953, -23.2789,
0.6575

■ 32.8582, 55.7877,
20.4842

■ 94.5682, -24.7808,
-1.4762

■ 32.7334, 56.1281,
20.5995

Harmonies

Analogous

The Analogous color harmony consists of three colors that are next to each other on the color wheel.



54.6404, 15.8502, -0.9346



54.6391, 15.4248, 7.8469



54.6404, 9.8775, 14.1613

Triad

The Triadic color harmony groups three colors that are evenly spaced from another and form a triangle on the color wheel.



54.6404, 15.4226, 7.8479



54.6404, -15.5771, 13.3901



54.6404, -6.8281, -16.5921

Complementary

The Complementary color scheme is a pair of colors which are on the opposite of each other on the color wheel.



54.6391, 15.4248, 7.8469



66.7988, -18.7396, 0.0916

Split Complementary

Split-complementary colors differ from the complementary color scheme. The scheme consists of three colors, the original color and two neighbors of the complement color.



54.6404, -14.6354, -11.2304



54.6391, 15.4248, 7.8469



54.6404, -19.4524, 6.6141

Square

The Square scheme is like the rectangle color scheme, but the four colors are evenly spaced on the color wheel.



54.6404, 15.4226, 7.8479



54.6404, -8.1942, 16.9700



54.6404, -19.1197, -2.3943



54.6404, 2.5655, -16.1101

Rectangle

The Rectangle color scheme consists of four colors that form a rectangle on the color wheel.



54.6391, 15.4248, 7.8469



54.6404, 4.2243, 16.5752



54.6404, -19.1197, -2.3943



54.6404, -9.7121, -15.3800

Sweetspot

The Sweet Spot groups the original color and five complimentary colors.



54.6404, 15.4226, 7.8479



88.7990, 2.0816, 6.5574



55.8644, 22.4456, -15.6783



40.6174, 1.5948, 3.1658



97.7295, -5.2146, 5.3098



44.2712, -2.3622, 2.4053

Same Dimension

The Same Dimension uses a secret algorithm to generate beautiful new colors.



54.6404, 15.4226, 7.8479



69.1581, 26.9673, 12.0453



60.7323, 3.4487, 15.1043



30.8948, 1.1193, 2.3837



27.0164, 46.3388, 16.8953



5.3752, 9.2757, 2.9265

Inverse Universe

The Inverse Universe completely reimagines the original color for something new.



54.6404, 15.4226, 7.8479



69.1581, 26.9673, 12.0453



59.7539, -7.3905, -10.5171



30.8948, 1.1193, 2.3837



27.0164, 46.3388, 16.8953



5.3752, 9.2757, 2.9265

Previews

White Background



This preview shows how the HunterLab color 54.6391, 15.4248, 7.8469 looks on a white background.

Color Contrast Check

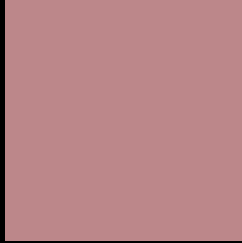
Large Text (above 18pt) WCAG AA ✓ Pass

Any Text WCAG AA × Fail

Large Text (above 18pt) WCAG AAA × Fail

Any Text WCAG AAA × Fail

Black Background



This preview shows how the HunterLab color 54.6391, 15.4248, 7.8469 looks on a black background.

Color Contrast Check

Large Text (above 18pt) WCAG AA ✓ Pass

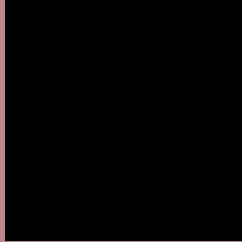
Any Text WCAG AA ✓ Pass

Large Text (above 18pt) WCAG AAA ✓ Pass

Any Text WCAG AAA × Fail

If you want to check with other color combinations, try the [Color Contrast Checker](#).

HunterLab 54.6391, 15.4248, 7.8469 Background



This preview shows how black text looks on a background with the HunterLab color 54.6391, 15.4248, 7.8469.



This preview shows how white text looks on a background with the HunterLab color 54.6391, 15.4248,

7.8469.

Color Blindness Simulation

Color vision deficiency is a very complex topic, and I could not describe the different causes any better than Wikipedia does, so if you want to learn more, you should check out their [article about color blindness](#).

Dichromacy



Original Color

54.6391, 15.4248, 7.8469

Protanopia

54.6805, -2.1664, 4.6096

Deuteranopia

54.8169, 3.6012, 8.6477



Tritanopia

54.6650, 17.1388, 5.3664

Trichromacy



Original Color

54.6391, 15.4248, 7.8469

Protanomaly

54.4034, 3.9539, 5.7025

Deuteranomaly

54.7447, 7.6207, 8.2350

Tritanomaly

54.6095, 16.8551, 6.1607

Monochromacy



Original Color

54.6391, 15.4248, 7.8469

Achromatopsia

55.6299, -2.9683, 3.0225

Achromatomaly

54.9715, 3.2388, 4.5994

CSS Examples

Text

The CSS property to change the color of the text to HunterLab 54.6391, 15.4248, 7.8469 is called "color". The color property can be set on classes, ids or directly on the HTML element.

This example shows how text in the color `rgb(188, 135, 138)` looks like.

```
.text, #text, p{  
    color:rgb(188, 135, 138)  
}
```

If you want to add a text shadow in that color use the text-shadow property, you can generate a text shadow directly with our [CSS Text Shadow Generator](#).

Here you see how black text with a 4 pixel rgb(188, 135, 138) colored shadow looks like.

```
.shadow{ text-shadow: 4px 4px 2px rgb(188, 135, 138) }
```

Border

The CSS property to change the border of an element to HunterLab 54.6391, 15.4248, 7.8469 is called "border". The border property can be set on classes, ids or directly on the HTML element.

This example shows the color as border, it can be applied via the CSS property "border" or "border-color".

```
.border, #border, table{ border:4px solid rgb(188, 135, 138) }
```


If only the border color should be changed use the property `border-color`.

```
.border{ border-color:rgb(188, 135, 138) }
```

If you want to add a box shadow in that color use:

Here you see how a box with a 4 pixel `rgb(188, 135, 138)` colored shadow looks like.

```
.boxshadow{ -moz-box-shadow:4px 4px 4px  
4px rgb(188, 135, 138); -webkit-box-  
shadow:4px 4px 4px 4px rgb(188, 135, 138);  
box-shadow:4px 4px 4px 4px rgb(188, 135,  
138) }
```

Background

The CSS property to change the background color of an element to HunterLab 54.6391, 15.4248, 7.8469 is called "background". The background property can be set on classes, ids or directly on the HTML element.

```
.background, #background, body{  
background: rgb(188, 135, 138) }
```

If only the background color should be changed can be used:

```
.background{ background-color: rgb(188,  
135, 138) }
```

This example shows the color as background, it is applied via the CSS property "background".

To optimize and compress your CSS code, you can use our [online CSS compressor and optimizer](#) based on csstidy. If you want to create a linear or radial gradient as background or border, check our [CSS Gradient Generator](#).

Hey! You found this booklet interesting? Support Converting Colors with the new Membership Option!

The pro membership hides all ads, plus gives you double the colors in the color bucket, and more awesome pro features!

[Learn more, Memberships starting at \\$2.50/m!](#)

**Follow me
on Twitter!**

@ConvertingColor