

Converting Colors

HunterLab(54.6644, 16.5849,
11.7471)

Have a look what the booklet for
HunterLab(54.6644, 16.5849,
11.7471) contains.

HunterLab(54.7231, 16.4879, 11.8824)	3
<i>Conversions</i>	4
<i>Details</i>	6
<i>Harmonies</i>	12
<i>Previews</i>	24
<i>Color Blindness Simulation</i>	28
<i>CSS Examples</i>	31

Color

**HunterLab(54.7231, 16.4879,
11.8824)**

Conversions

Conversions Part 1

Format	Color
Hex	C18680
RGB	193, 134, 128
RGB Percent	76%, 53%, 50%
CMY	0.2431, 0.4745, 0.4980
CMYK	0.00, 0.31, 0.34, 0.24
HSL	6°, 34%, 63%
HSV	6°, 34%, 76%
XYZ	34.4137, 29.9462, 24.3884
YIQ	150.9570, 37.0900, 10.6420

Conversions

Conversions Part 2

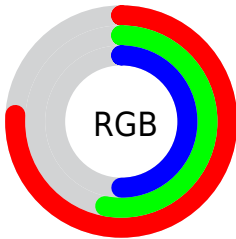
Format	Color
R _Y B	193, 135, 128
Decimal	12682880
CIE Lab	61.61, 21.85, 12.35
CIE LCh	62, 25.098, 29.467
Yxy	29.9476, 0.3878, 0.3374
Android (android.graphics.Color)	4290872960 (0xFFC18680)
YUV	150.9570, -11.3178, 36.8717
Hunter-Lab	54.7231, 16.4879, 11.8824

Details

The HunterLab color **54.7231, 16.4879, 11.8824** is a light color, and the websafe version is hex **CC9999**. A complement of this color would be **66.3163, -18.3539, -4.5642**, and the grayscale version is **55.6474, -2.9692, 3.0234**.

A 20% lighter version of the original color is **77.3381, 17.2372, 14.4430**, and **35.0834, 15.2420, 9.3841** is the 20% darker color. If you saturate the color by 10%, you get **50.0387, 23.1536, 14.1959**, and if you desaturate by 10%, it is **59.7957, 10.0874, 9.5291**.

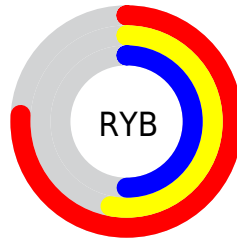
Distribution



Red (76%)

Green (53%)

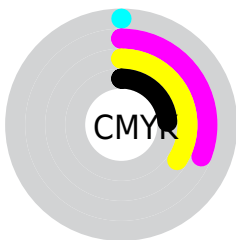
Blue (50%)



Red (76%)

Yellow (53%)

Blue (50%)

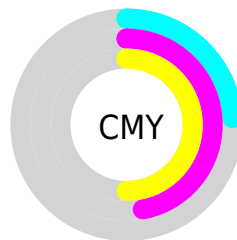


Cyan (0%)

Magenta (31%)

Yellow (34%)

Black (24%)



Cyan (24%)

Magenta (47%)

Yellow (50%)

Brightness & Saturation Gradients

These gradients show how the HunterLab color 54.7231, 16.4879, 11.8824 changes by changing the brightness by 10 percent. The first figure shows a shift by +10% for each color and the second figure -10%.

Similar to the brightness gradients but the following saturation gradients show a change of the HunterLab color 54.7231, 16.4879, 11.8824 by changing the saturation by 10% instead.

■ 54.7231, 16.4879,
11.8824

■ 54.7231, 16.4879,
11.8824

173.6837, 18.2778,
23.2199

■ 44.4959, 15.9101,
10.6167

■ 77.1876, 17.3595,
14.3836

■ 34.9984, 15.2260,
9.3265

■ 89.3482, 17.6768,
15.6292

■ 26.2934, 14.4170,
7.9962

■ 102.0878, 17.9239,
16.8770

■ 18.4608, 13.4633,
6.5985

115.3812, 18.1064,
18.1295

■ 11.6115, 12.3461,
5.3903

129.2062, 18.2293,
19.3888

■ 4.2205, 22.3351,
2.9543

143.5431, 18.2965,

0.0000, NaN, NaN

20.6562

0.0000, NaN, NaN

158.3742, 18.3117,
21.9329

0.0000, NaN, NaN

■ 54.7231, 16.4879,
11.8824

■ 54.7231, 16.4879,
11.8824

■ 50.0387, 23.1536,
14.1959

■ 59.7957, 10.0874,
9.5291

■ 45.8079, 30.0020,
16.4044

■ 65.1946, 3.9862,
7.1700

■ 42.1111, 36.8418,
18.4120

■ 70.8741, -1.8264,
4.8248

■ 39.0312, 43.3532,
20.0871

■ 76.7958, -7.3750,
2.5022

■ 36.6414, 49.0909,
21.2837

■ 82.9290, -12.6906,
0.2043

■ 34.9835, 53.5675,
21.8940

■ 89.2489, -17.8046,
-2.0698

■ 34.2995, 55.5391,
22.1075

■ 94.9092, -23.5260,
-1.0310

Harmonies

Analogous

The Analogous color harmony consists of three colors that are next to each other on the color wheel.



54.7244, 19.5805, 2.7936



54.7231, 16.4879, 11.8824



54.7244, 8.1034, 17.4841

Triad

The Triadic color harmony groups three colors that are evenly spaced from another and form a triangle on the color wheel.



54.7244, 16.4855, 11.8833



54.7244, -19.7845, 12.1462



54.7244, -3.1171, -20.8609

Complementary

The Complementary color scheme is a pair of colors which are on the opposite of each other on the color wheel.



54.7231, 16.4879, 11.8824



66.3163, -18.3539, -4.5642

Split Complementary

Split-complementary colors differ from the complementary color scheme. The scheme consists of three colors, the original color and two neighbors of the complement color.



54.7244, -13.1399, -17.0591



54.7231, 16.4879, 11.8824



54.7244, -22.2909, 3.1633

Square

The Square scheme is like the rectangle color scheme, but the four colors are evenly spaced on the color wheel.



54.7244, 16.4855, 11.8833



54.7244, -12.8281, 17.6138



54.7244, -19.9544, -7.7303



54.7244, 7.7412, -17.3089

Rectangle

The Rectangle color scheme consists of four colors that form a rectangle on the color wheel.



54.7231, 16.4879, 11.8824



54.7244, 0.9497, 19.1405



54.7244, -19.9544, -7.7303



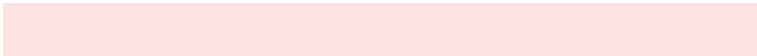
54.7244, -6.6907, -20.3910

Sweetspot

The Sweet Spot groups the original color and five complimentary colors.



54.7244, 16.4855, 11.8833



89.8858, 2.5525, 8.4872



55.1262, 28.9830, -16.4419



41.1394, 1.6979, 4.1374



98.8636, -5.2751, 5.3714



45.2661, -2.4153, 2.4594

Same Dimension

The Same Dimension uses a secret algorithm to generate beautiful new colors.



54.7244, 16.4855, 11.8833



68.8197, 28.2296, 18.0638



63.3548, 0.4467, 19.9347



31.9752, 0.6848, 2.9120



28.0676, 44.9796, 18.0825



6.2633, 7.9985, 3.9994

Inverse Universe

The Inverse Universe completely reimagines the original color for something new.



66.3163, -18.3539, -4.5642



87.2282, -27.4881, -8.1505



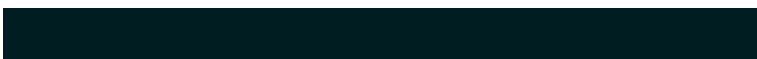
56.4891, -3.2271, -18.2019



33.5622, -4.0255, 0.6749



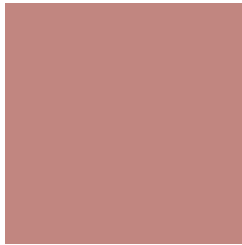
48.0211, -22.1400, -12.2284



10.2159, -4.8935, -2.2053

Previews

White Background



This preview shows how the HunterLab color 54.7231, 16.4879, 11.8824 looks on a white background.

Color Contrast Check

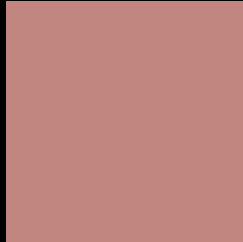
Large Text (above 18pt) WCAG AA ✓ Pass

Any Text WCAG AA × Fail

Large Text (above 18pt) WCAG AAA × Fail

Any Text WCAG AAA × Fail

Black Background



This preview shows how the HunterLab color 54.7231, 16.4879, 11.8824 looks on a black background.

Color Contrast Check

Large Text (above 18pt) WCAG AA ✓ Pass

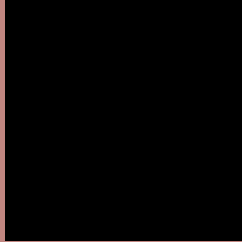
Any Text WCAG AA ✓ Pass

Large Text (above 18pt) WCAG AAA ✓ Pass

Any Text WCAG AAA × Fail

If you want to check with other color combinations, try the [Color Contrast Checker](#).

HunterLab 54.7231, 16.4879, 11.8824 Background



This preview shows how black text looks on a background with the HunterLab color 54.7231, 16.4879, 11.8824.



This preview shows how white text looks on a background with the HunterLab color 54.7231, 16.4879, 11.8824.

Color Blindness Simulation

Color vision deficiency is a very complex topic, and I could not describe the different causes any better than Wikipedia does, so if you want to learn more, you should check out their [article about color blindness](#).

Dichromacy



Original Color

54.7231, 16.4879, 11.8824

Protanopia

54.9661, -3.1894, 9.0892

Deuteranopia

54.7009, 4.1325, 12.3842



Tritanopia

54.7036, 19.7211, 6.3166

Trichromacy



Original Color

54.7231, 16.4879, 11.8824

Protanomaly

54.8156, 3.3931, 10.2248

Deuteranomaly

54.7647, 8.5642, 12.1579

Tritanomaly

54.8184, 18.5269, 8.5057

Monochromacy



Original Color

54.7231, 16.4879, 11.8824

Achromatopsia

55.6299, -2.9683, 3.0225

Achromatomaly

55.0826, 3.4453, 6.0304

CSS Examples

Text

The CSS property to change the color of the text to HunterLab 54.7231, 16.4879, 11.8824 is called "color". The color property can be set on classes, ids or directly on the HTML element.

This example shows how text in the color `rgb(193, 134, 128)` looks like.

```
.text, #text, p{  
    color:rgb(193, 134, 128)  
}
```

If you want to add a text shadow in that color use the text-shadow property, you can generate a text shadow directly with our [CSS Text Shadow Generator](#).

Here you see how black text with a 4 pixel rgb(193, 134, 128) colored shadow looks like.

```
.shadow{ text-shadow: 4px 4px 2px rgb(193, 134, 128) }
```

Border

The CSS property to change the border of an element to HunterLab 54.7231, 16.4879, 11.8824 is called "border". The border property can be set on classes, ids or directly on the HTML element.

This example shows the color as border, it can be applied via the CSS property "border" or "border-color".

```
.border, #border, table{ border:4px solid rgb(193, 134, 128) }
```


If only the border color should be changed use the property `border-color`.

```
.border{ border-color:rgb(193, 134, 128) }
```

If you want to add a box shadow in that color use:

Here you see how a box with a 4 pixel `rgb(193, 134, 128)` colored shadow looks like.

```
.boxshadow{ -moz-box-shadow:4px 4px 4px  
4px rgb(193, 134, 128); -webkit-box-  
shadow:4px 4px 4px 4px rgb(193, 134, 128);  
box-shadow:4px 4px 4px 4px rgb(193, 134,  
128) }
```

Background

The CSS property to change the background color of an element to HunterLab 54.7231, 16.4879, 11.8824 is called "background". The background property can be set on classes, ids or directly on the HTML element.

```
.background, #background, body{  
background: rgb(193, 134, 128) }
```

If only the background color should be changed can be used:

```
.background{ background-color: rgb(193,  
134, 128) }
```

This example shows the color as background, it is applied via the CSS property "background".

To optimize and compress your CSS code, you can use our [online CSS compressor and optimizer](#) based on csstidy. If you want to create a linear or radial gradient as background or border, check our [CSS Gradient Generator](#).

Hey! You found this booklet interesting? Support Converting Colors with the new Membership Option!

The pro membership hides all ads, plus gives you double the colors in the color bucket, and more awesome pro features!

[Learn more, Memberships starting at \\$2.50/m!](#)

**Follow me
on Twitter!**

@ConvertingColor