

Converting Colors

HunterLab(54.7377, 3.9896,
11.6073)

Have a look what the booklet for
HunterLab(54.7377, 3.9896,
11.6073) contains.

HunterLab(54.6455, 4.0423, 11.5853)	3
<i>Conversions</i>	4
<i>Details</i>	6
<i>Harmonies</i>	12
<i>Previews</i>	24
<i>Color Blindness Simulation</i>	28
<i>CSS Examples</i>	31

Color

**HunterLab(54.6455, 4.0423,
11.5853)**

Conversions

Conversions Part 1

Format	Color
Hex	AB8F80
RGB	171, 143, 128
RGB Percent	67%, 56%, 50%
CMY	0.3294, 0.4392, 0.4980
CMYK	0.00, 0.16, 0.25, 0.33
HSL	21°, 20%, 59%
HSV	21°, 25%, 67%
XYZ	30.5133, 29.8613, 24.5776
YIQ	149.6620, 21.5030, 1.2710

Conversions

Conversions Part 2

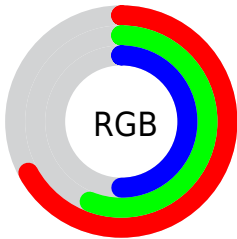
Format	Color
R_{YB}	171, 151, 128
Decimal	11243392
CIE Lab	61.54, 8.16, 11.91
CIE LCh	62, 14.435, 55.572
Yxy	29.8627, 0.3592, 0.3515
Android (android.graphics.Color)	4289433472 (0xFFAB8F80)
YUV	149.6620, -10.6794, 18.7134
Hunter-Lab	54.6455, 4.0423, 11.5853

Details

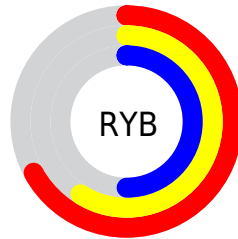
The HunterLab color $54.6455, 4.0423, 11.5853$ is a dark color, and the websafe version is hex $CC9999$. A complement of this color would be $55.9513, -8.1376, -6.4927$, and the grayscale version is $55.1257, -2.9414, 2.9951$.

A 20% lighter version of the original color is $77.2008, 3.5938, 14.0598$, and $34.9925, 4.0410, 9.0995$ is the 20% darker color. If you saturate the color by 10%, you get $51.2552, 7.4400, 14.3500$, and if you desaturate by 10%, it is $58.1912, 0.9003, 8.5373$.

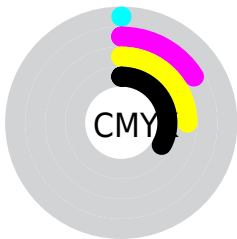
Distribution



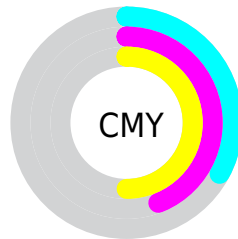
- Red (67%)
- Green (56%)
- Blue (50%)



- Red (67%)
- Yellow (59%)
- Blue (50%)



- Cyan (0%)
- Magenta (16%)
- Yellow (25%)
- Black (33%)



- Cyan (33%)
- Magenta (44%)
- Yellow (50%)

Brightness & Saturation Gradients

These gradients show how the HunterLab color 54.6455, 4.0423, 11.5853 changes by changing the brightness by 10 percent. The first figure shows a shift by +10% for each color and the second figure -10%.

Similar to the brightness gradients but the following saturation gradients show a change of the HunterLab color 54.6455, 4.0423, 11.5853 by changing the saturation by 10% instead.

■ 54.6455, 4.0423,
11.5853

■ 54.6455, 4.0423,
11.5853

173.5695, 0.8266,
22.7406

■ 44.4234, 4.1455,
10.3465

■ 77.1005, 3.6486,
14.0381

■ 34.9315, 4.1797,
9.0857

■ 89.2568, 3.3731,
15.2618

■ 26.2326, 4.1316,
7.7882

■ 101.9922, 3.0503,
16.4888

■ 18.4068, 3.9850,
6.4278

115.2816, 2.6835,
17.7216

■ 11.5652, 3.7145,
5.2346

129.1027, 2.2755,
18.9619

■ 4.1230, 8.4049,
2.8861

143.4360, 1.8287,

0.0000, NaN, NaN

20.2112

0.0000, NaN, NaN

158.2635, 1.3451,
21.4704

0.0000, NaN, NaN

■ 54.6455, 4.0423,
11.5853

■ 54.6455, 4.0423,
11.5853

■ 51.2552, 7.4400,
14.3500

■ 58.1912, 0.9003,
8.5373

■ 48.0348, 11.1129,
16.7802

■ 61.8724, -1.9996,
5.2449

■ 45.0067, 15.0633,
18.8200

■ 65.6769, -4.6803,
1.7431

■ 42.1943, 19.2783,
20.4078

■ 69.5926, -7.1631,
-1.9402

■ 39.6229, 23.7195,
21.4822

■ 73.6095, -9.4683,
-5.7818

■ 37.3186, 28.3124,
21.9937

■ 77.7188, -11.6147,
-9.7629

■ 35.3054, 32.9345,
21.9313

■ 81.9130, -13.6193,
-13.8682

■ 34.4306, 35.1020,
21.8305

■ 85.8091, -17.6122,
-12.8026

■ 89.5000, -23.0853,
-7.9283

Harmonies

Analogous

The Analogous color harmony consists of three colors that are next to each other on the color wheel.



54.6467, 8.3455, 7.6810



54.6455, 4.0423, 11.5853



54.6467, -1.9881, 13.1858

Triad

The Triadic color harmony groups three colors that are evenly spaced from another and form a triangle on the color wheel.



54.6467, 4.0404, 11.5861



54.6467, -14.3878, 3.8495



54.6467, 2.3640, -8.3706

Complementary

The Complementary color scheme is a pair of colors which are on the opposite of each other on the color wheel.



54.6455, 4.0423, 11.5853



55.9513, -8.1376, -6.4927

Split Complementary

Split-complementary colors differ from the complementary color scheme. The scheme consists of three colors, the original color and two neighbors of the complement color.



54.6467, -3.8432, -9.6899



54.6455, 4.0423, 11.5853



54.6467, -13.3385, -2.1917

Square

The Square scheme is like the rectangle color scheme, but the four colors are evenly spaced on the color wheel.



54.6467, 4.0404, 11.5861



54.6467, -12.4789, 9.0492



54.6467, -9.5462, -7.3161



54.6467, 7.3475, -3.8889

Rectangle

The Rectangle color scheme consists of four colors that form a rectangle on the color wheel.



54.6455, 4.0423, 11.5853



54.6467, -6.1064, 12.8777



54.6467, -9.5462, -7.3161



54.6467, 0.3437, -9.2186

Sweetspot

The Sweet Spot groups the original color and five complimentary colors.



54.6467, 4.0404, 11.5861



81.3076, -1.5455, 8.3703



51.4971, 15.8469, -4.5443



38.0510, -0.4620, 4.2627



93.2148, -4.9737, 5.0645



40.3295, -2.1519, 2.1912

Same Dimension

The Same Dimension uses a secret algorithm to generate beautiful new colors.



54.6467, 4.0404, 11.5861



70.6607, 7.8124, 17.5483



60.5871, -6.0440, 17.2424



29.0781, -0.3947, 3.2029



30.0452, 30.0656, 19.0401



5.9615, 2.7154, 3.7210

Inverse Universe

The Inverse Universe completely reimagines the original color for something new.



55.9513, -8.1376, -6.4927



72.7595, -11.8361, -11.6011



49.9042, 1.8755, -14.9909



29.3164, -2.6085, -0.0872



33.0811, -4.4469, -31.7489



6.3378, -1.9614, -3.6876

Previews

White Background



This preview shows how the HunterLab color 54.6455, 4.0423, 11.5853 looks on a white background.

Color Contrast Check

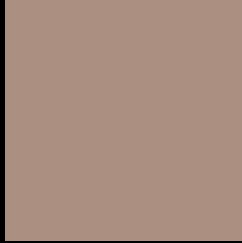
Large Text (above 18pt) WCAG AA ✓ Pass

Any Text WCAG AA × Fail

Large Text (above 18pt) WCAG AAA × Fail

Any Text WCAG AAA × Fail

Black Background



This preview shows how the HunterLab color 54.6455, 4.0423, 11.5853 looks on a black background.

Color Contrast Check

Large Text (above 18pt) WCAG AA ✓ Pass

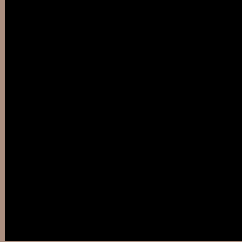
Any Text WCAG AA ✓ Pass

Large Text (above 18pt) WCAG AAA ✓ Pass

Any Text WCAG AAA × Fail

If you want to check with other color combinations, try the [Color Contrast Checker](#).

HunterLab 54.6455, 4.0423, 11.5853 Background



This preview shows how black text looks on a background with the HunterLab color 54.6455, 4.0423, 11.5853.



This preview shows how white text looks on a background with the HunterLab color 54.6455, 4.0423,

Color Blindness Simulation

Color vision deficiency is a very complex topic, and I could not describe the different causes any better than Wikipedia does, so if you want to learn more, you should check out their [article about color blindness](#).

Dichromacy



Original Color

54.6455, 4.0423, 11.5853

Protanopia

54.6685, -2.9500, 10.3468

Deuteranopia

54.6455, 4.0423, 11.5853



Tritanopia

54.7624, 9.8385, 2.2178

Trichromacy



Original Color

54.6455, 4.0423, 11.5853

Protanomaly

54.5404, -0.5144, 10.6403

Deuteranomaly

54.6455, 4.0423, 11.5853

Tritanomaly

54.6966, 7.7861, 5.6711

Monochromacy



Original Color

54.6455, 4.0423, 11.5853

Achromatopsia

55.2257, -2.9467, 3.0005

Achromatomaly

54.8539, -0.2694, 6.1353

CSS Examples

Text

The CSS property to change the color of the text to HunterLab 54.6455, 4.0423, 11.5853 is called "color". The color property can be set on classes, ids or directly on the HTML element.

This example shows how text in the color `rgb(171, 143, 128)` looks like.

```
.text, #text, p{  
    color:rgb(171, 143, 128)  
}
```

If you want to add a text shadow in that color use the text-shadow property, you can generate a text shadow directly with our [CSS Text Shadow Generator](#).

Here you see how black text with a 4 pixel rgb(171, 143, 128) colored shadow looks like.

```
.shadow{ text-shadow: 4px 4px 2px rgb(171, 143, 128) }
```

Border

The CSS property to change the border of an element to HunterLab 54.6455, 4.0423, 11.5853 is called "border". The border property can be set on classes, ids or directly on the HTML element.

This example shows the color as border, it can be applied via the CSS property "border" or "border-color".

```
.border, #border, table{ border:4px solid rgb(171, 143, 128) }
```


If only the border color should be changed use the property `border-color`.

```
.border{ border-color:rgb(171, 143, 128) }
```

If you want to add a box shadow in that color use:

Here you see how a box with a 4 pixel `rgb(171, 143, 128)` colored shadow looks like.

```
.boxshadow{ -moz-box-shadow:4px 4px 4px  
4px rgb(171, 143, 128); -webkit-box-  
shadow:4px 4px 4px 4px rgb(171, 143, 128);  
box-shadow:4px 4px 4px 4px rgb(171, 143,  
128) }
```

Background

The CSS property to change the background color of an element to HunterLab 54.6455, 4.0423, 11.5853 is called "background". The background property can be set on classes, ids or directly on the HTML element.

```
.background, #background, body{  
background: rgb(171, 143, 128) }
```

If only the background color should be changed can be used:

```
.background{ background-color: rgb(171,  
143, 128) }
```

This example shows the color as background, it is applied via the CSS property "background".

To optimize and compress your CSS code, you can use our [online CSS compressor and optimizer](#) based on csstidy. If you want to create a linear or radial gradient as background or border, check our [CSS Gradient Generator](#).

Hey! You found this booklet interesting? Support Converting Colors with the new Membership Option!

The pro membership hides all ads, plus gives you double the colors in the color bucket, and more awesome pro features!

[Learn more, Memberships starting at \\$2.50/m!](#)

**Follow me
on Twitter!**

@ConvertingColor