

Converting Colors

HunterLab(54.7670, 2.1090,
13.3986)

Have a look what the booklet for
HunterLab(54.7670, 2.1090,
13.3986) contains.

HunterLab(54.6000, 2.2347, 13.3349)	3
<i>Conversions</i>	4
<i>Details</i>	6
<i>Harmonies</i>	12
<i>Previews</i>	24
<i>Color Blindness Simulation</i>	28
<i>CSS Examples</i>	31

Color

**HunterLab(54.6000, 2.2347,
13.3349)**

Conversions

Conversions Part 1

Format	Color
Hex	A9907B
RGB	169, 144, 123
RGB Percent	66%, 56%, 48%
CMY	0.3373, 0.4353, 0.5176
CMYK	0.00, 0.15, 0.27, 0.34
HSL	27°, 21%, 57%
HSV	27°, 27%, 66%
XYZ	29.9106, 29.8116, 22.9166
YIQ	149.0810, 21.6410, -1.2310

Conversions

Conversions Part 2

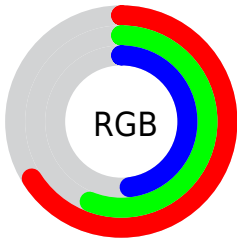
Format	Color
R_{YB}	169, 162, 123
Decimal	11112571
CIE Lab	61.49, 6.08, 14.64
CIE LCh	61, 15.851, 67.455
Yxy	29.8130, 0.3619, 0.3608
Android (android.graphics.Color)	4289302651 (0xFFA9907B)
YUV	149.0810, -12.8579, 17.4690
Hunter-Lab	54.6000, 2.2347, 13.3349

Details

The HunterLab color $54.6000, 2.2347, 13.3349$ is a dark color, and the websafe version is hex 999999 . A complement of this color would be $53.1550, -5.9810, -9.2195$, and the grayscale version is $54.8997, -2.9293, 2.9828$.

A 20% lighter version of the original color is $77.1559, 1.6631, 16.0089$, and $34.9469, 2.3896, 10.5845$ is the 20% darker color. If you saturate the color by 10%, you get $51.7260, 4.7516, 16.2952$, and if you desaturate by 10%, it is $57.5930, -0.0267, 9.9854$.

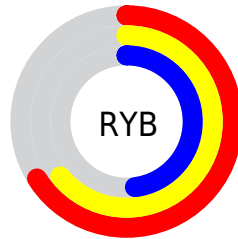
Distribution



Red (66%)

Green (56%)

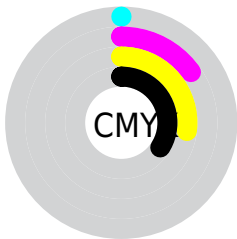
Blue (48%)



Red (66%)

Yellow (64%)

Blue (48%)

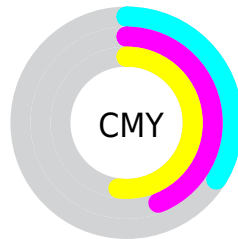


Cyan (0%)

Magenta (15%)

Yellow (27%)

Black (34%)



Cyan (34%)

Magenta (44%)

Yellow (52%)

Brightness & Saturation Gradients

These gradients show how the HunterLab color 54.6000, 2.2347, 13.3349 changes by changing the brightness by 10 percent. The first figure shows a shift by +10% for each color and the second figure -10%.

Similar to the brightness gradients but the following saturation gradients show a change of the HunterLab color 54.6000, 2.2347, 13.3349 by changing the saturation by 10% instead.

■ 54.6000, 2.2347,
13.3349

■ 54.6000, 2.2347,
13.3349

173.5026, -1.7702,
25.6298

■ 44.3809, 2.4479,
11.9258

■ 77.0495, 1.6388,
16.0913

■ 34.8923, 2.5995,
10.4781

■ 89.2032, 1.2695,
17.4525

■ 26.1969, 2.6781,
8.9717

■ 101.9362, 0.8568,
18.8096

■ 18.3751, 2.6697,
7.3722

115.2232, 0.4037,
20.1660

■ 11.5381, 2.5527,
6.2175

129.0421, -0.0875,
21.5244

■ 4.0648, 6.2980,
2.8454

143.3732, -0.6147,

0.0000, NaN, NaN

22.8868

0.0000, NaN, NaN

158.1987, -1.1761,
24.2549

0.0000, NaN, NaN

■ 54.6000, 2.2347,
13.3349

■ 54.6000, 2.2347,
13.3349

■ 51.7260, 4.7516,
16.2952

■ 57.5930, -0.0267,
9.9854

■ 48.9784, 7.5440,
18.8177

■ 60.6912, -2.0443,
6.2869

■ 46.3708, 10.6195,
20.8544

■ 63.8868, -3.8387,
2.2780

■ 43.9165, 13.9780,
22.3578

■ 67.1718, -5.4282,
-2.0079

■ 41.6291, 17.6060,
23.2875

■ 70.5391, -6.8307,
-6.5417

■ 39.5223, 21.4700,
23.6207

■ 73.9825, -8.0629,
-11.2985

■ 37.6055, 25.4979,
23.4059

■ 77.4963, -9.1402,
-16.2563

■ 37.1025, 26.6129,
23.3283

■ 80.9473, -10.7893,
-19.6052

■ 83.9078, -15.3963,
-15.4166

Harmonies

Analogous

The Analogous color harmony consists of three colors that are next to each other on the color wheel.



54.6012, 7.9523, 10.0643



54.6000, 2.2347, 13.3349



54.6012, -4.6168, 14.0057

Triad

The Triadic color harmony groups three colors that are evenly spaced from another and form a triangle on the color wheel.



54.6012, 2.2328, 13.3357



54.6012, -15.3874, 1.3193



54.6012, 5.3375, -7.9544

Complementary

The Complementary color scheme is a pair of colors which are on the opposite of each other on the color wheel.



54.6000, 2.2347, 13.3349



53.1550, -5.9810, -9.2195

Split Complementary

Split-complementary colors differ from the complementary color scheme. The scheme consists of three colors, the original color and two neighbors of the complement color.



54.6012, -1.1947, -10.9882



54.6000, 2.2347, 13.3349



54.6012, -12.9961, -5.2210

Square

The Square scheme is like the rectangle color scheme, but the four colors are evenly spaced on the color wheel.



54.6012, 2.2328, 13.3357



54.6012, -14.5706, 7.5668



54.6012, -7.8814, -9.9307



54.6012, 9.8056, -2.0602

Rectangle

The Rectangle color scheme consists of four colors that form a rectangle on the color wheel.



54.6000, 2.2347, 13.3349



54.6012, -8.8646, 12.9739



54.6012, -7.8814, -9.9307



54.6012, 3.2980, -9.3737

Sweetspot

The Sweet Spot groups the original color and five complimentary colors.



54.6012, 2.2328, 13.3357



80.8315, -2.4991, 8.8894



49.7483, 16.3288, -2.5990



37.4514, -0.9899, 4.4971



92.0917, -4.9138, 5.0035



39.3538, -2.0998, 2.1382

Same Dimension

The Same Dimension uses a secret algorithm to generate beautiful new colors.



54.6012, 2.2328, 13.3357



70.5998, 5.0945, 20.4345



61.1498, -8.6356, 19.3597



28.4350, -0.7798, 3.3515



32.1936, 22.5800, 20.2329



5.9595, 1.4858, 3.6982

Inverse Universe

The Inverse Universe completely reimagines the original color for something new.



53.1550, -5.9810, -9.2195



68.2297, -8.3224, -16.5199



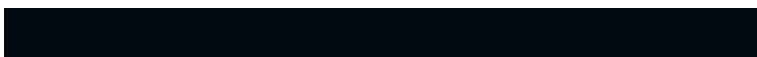
46.7110, 5.0076, -18.7738



28.1968, -2.1389, -0.3641



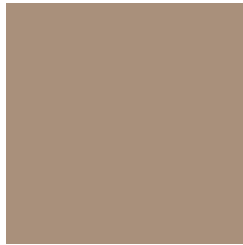
28.1540, 2.9297, -41.5144



5.4153, -1.2192, -4.1366

Previews

White Background



This preview shows how the HunterLab color 54.6000, 2.2347, 13.3349 looks on a white background.

Color Contrast Check

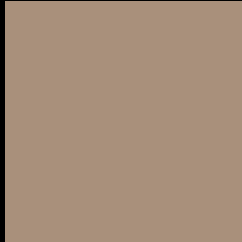
Large Text (above 18pt) WCAG AA ✓ Pass

Any Text WCAG AA × Fail

Large Text (above 18pt) WCAG AAA × Fail

Any Text WCAG AAA × Fail

Black Background



This preview shows how the HunterLab color 54.6000, 2.2347, 13.3349 looks on a black background.

Color Contrast Check

Large Text (above 18pt) WCAG AA ✓ Pass

Any Text WCAG AA ✓ Pass

Large Text (above 18pt) WCAG AAA ✓ Pass

Any Text WCAG AAA × Fail

If you want to check with other color combinations, try the [Color Contrast Checker](#).

HunterLab 54.6000, 2.2347, 13.3349 Background



This preview shows how black text looks on a background with the HunterLab color 54.6000, 2.2347, 13.3349.



This preview shows how white text looks on a background with the HunterLab color 54.6000, 2.2347,

Color Blindness Simulation

Color vision deficiency is a very complex topic, and I could not describe the different causes any better than Wikipedia does, so if you want to learn more, you should check out their [article about color blindness](#).

Dichromacy



Original Color

54.6000, 2.2347, 13.3349

Protanopia

54.6155, -3.4235, 12.5313

Deuteranopia

54.6312, 3.7589, 13.3924



Tritanopia

54.5538, 9.1603, 1.9562

Trichromacy



Original Color

54.6000, 2.2347, 13.3349

Protanomaly

54.6807, -1.7749, 12.9867

Deuteranomaly

54.5279, 3.4120, 13.2841

Tritanomaly

54.4342, 6.8122, 6.2141

Monochromacy



Original Color

54.6000, 2.2347, 13.3349

Achromatopsia

54.8219, -2.9252, 2.9786

Achromatomaly

54.6158, -1.1971, 6.6986

CSS Examples

Text

The CSS property to change the color of the text to HunterLab 54.6000, 2.2347, 13.3349 is called "color". The color property can be set on classes, ids or directly on the HTML element.

This example shows how text in the color `rgb(169, 144, 123)` looks like.

```
.text, #text, p{  
    color:rgb(169, 144, 123)  
}
```

If you want to add a text shadow in that color use the text-shadow property, you can generate a text shadow directly with our [CSS Text Shadow Generator](#).

Here you see how black text with a 4 pixel rgb(169, 144, 123) colored shadow looks like.

```
.shadow{ text-shadow: 4px 4px 2px rgb(169, 144, 123) }
```

Border

The CSS property to change the border of an element to HunterLab 54.6000, 2.2347, 13.3349 is called "border". The border property can be set on classes, ids or directly on the HTML element.

This example shows the color as border, it can be applied via the CSS property "border" or "border-color".

```
.border, #border, table{ border:4px solid rgb(169, 144, 123) }
```


If only the border color should be changed use the property `border-color`.

```
.border{ border-color:rgb(169, 144, 123) }
```

If you want to add a box shadow in that color use:

Here you see how a box with a 4 pixel `rgb(169, 144, 123)` colored shadow looks like.

```
.boxshadow{ -moz-box-shadow:4px 4px 4px 4px rgb(169, 144, 123); -webkit-box-shadow:4px 4px 4px 4px rgb(169, 144, 123); box-shadow:4px 4px 4px 4px rgb(169, 144, 123) }
```

Background

The CSS property to change the background color of an element to HunterLab 54.6000, 2.2347, 13.3349 is called "background". The background property can be set on classes, ids or directly on the HTML element.

```
.background, #background, body{  
background: rgb(169, 144, 123) }
```

If only the background color should be changed can be used:

```
.background{ background-color: rgb(169,  
144, 123) }
```

This example shows the color as background, it is applied via the CSS property "background".

To optimize and compress your CSS code, you can use our [online CSS compressor and optimizer](#) based on csstidy. If you want to create a linear or radial gradient as background or border, check our [CSS Gradient Generator](#).

Hey! You found this booklet interesting? Support Converting Colors with the new Membership Option!

The pro membership hides all ads, plus gives you double the colors in the color bucket, and more awesome pro features!

[Learn more, Memberships starting at \\$2.50/m!](#)

**Follow me
on Twitter!**

@ConvertingColor